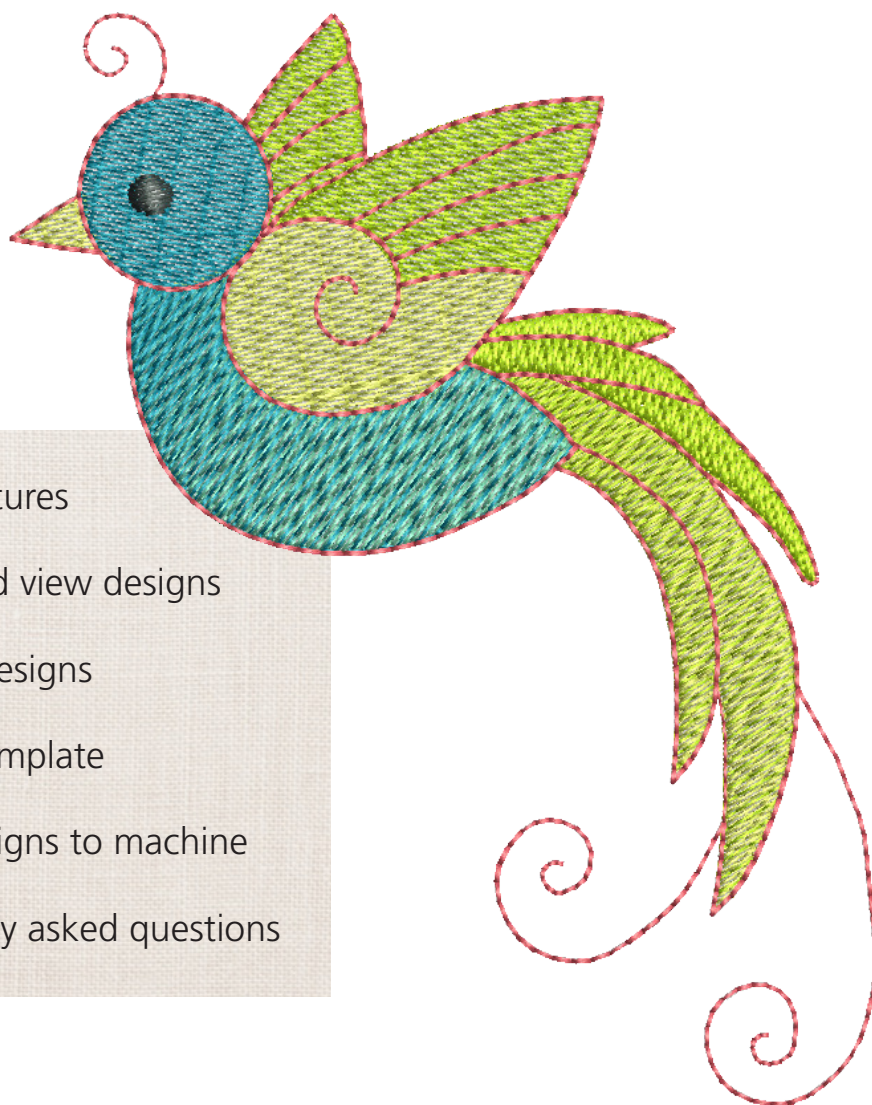


Just EMBROIDER It!

# ArtLink Basics



- ✓ Basic features
- ✓ Open and view designs
- ✓ Modify designs
- ✓ Print a template
- ✓ Send designs to machine
- ✓ Frequently asked questions

ArtLink 6 is a basic software program that allows you to open an embroidery design, make basic adjustments, and write the design directly to your embroidery machine or to a removable device, such as a USB stick.

### What ArtLink can do:

- Open embroidery designs
- Convert embroidery designs
- Send embroidery designs with the proper format to your BERNINA embroidery machine using a direct connection or USB stick
- Rotate
- Scale (Re-size)
- Mirror image Horizontal
- Mirror Image Vertical
- Assign thread colors
- Print a paper template

### What ArtLink can't do:

- Create an embroidery design
- Combine embroidery designs
- Digitize artwork (such as a picture or logo) into an embroidery design
- Digitize fonts or lettering
- Add lettering to an existing design

For more software features, check out BERNINA Embroidery Software EditorPlus and DesignerPlus at [bernina.com](http://bernina.com)



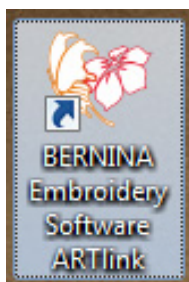
### Installation Instructions

Download and follow the most current ArtLink installation instructions on the BERNINA consumer web site:

[bernina.com/ArtLink6](http://bernina.com/ArtLink6)

### Open ArtLink 6

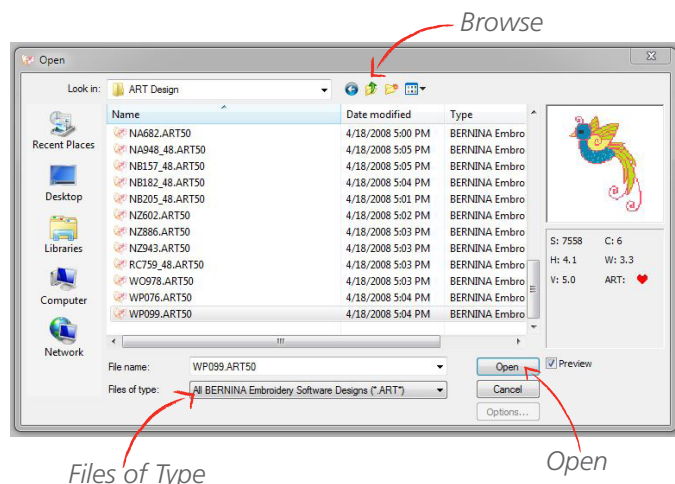
- Double click the desktop icon to open ArtLink 6
- A splash screen will appear as the software is opening. If the computer is connected to the internet, click on any of the links in the splash screen to go to the [bernina.com](http://bernina.com) website, or click Close at the bottom of the splash screen.



### Open an Embroidery Design

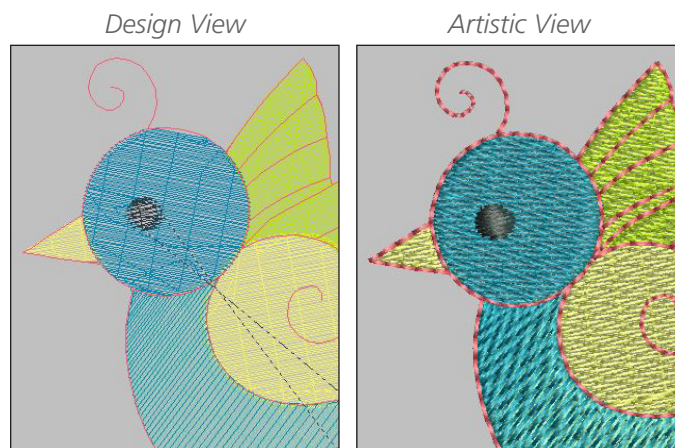
- Click the Open icon (File Folder), or click on File > Open from the menu
- Files of Type defaults to .ART60. To open a different file type, drop down the Files of Type box to All Files (\*.\*)
- Browse to the drive, folder, CD or USB stick that contains the embroidery design you wish to open
- Select the design, then click Open
- *Note: ArtLink 6 comes with 40 built-in embroidery designs. You may use any of these designs by browsing to:*

<C:\My Designs - Embroidery Software 6\ARTlink>



### Viewing the Design

You can view the design in two ways – either in Design View (on the left) or in Artistic View (on the right). The first time the software opens, it will open the design in the Design View (left). Select the "Show Artistic View" icon to change the design to a view that looks like actual stitching. Whatever view is active when you close the software is the view that will show the next time you open the software.



## Viewing the Design (continued)

Note: Please remember that Artistic View is an *approximation* of how the design will look when stitched out – it is not an exact rendering.



**Mouse scroll wheel:** You can zoom in and out using the center scroll wheel on your mouse.



**Show 1:1:** By clicking this icon, the design will be shown onscreen at its actual size (100%).



**Show All:** The design will fill the screen.

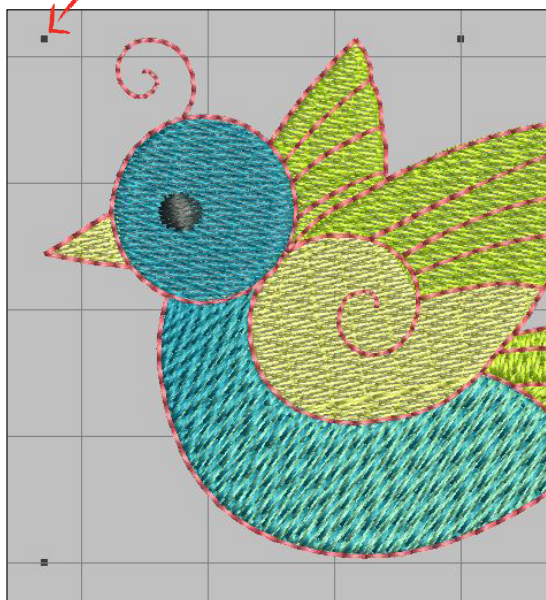


**Zoom Box:** The cursor turns into a magnifying glass. Click and drag a box around the area you want to focus on. When you release the mouse, that area will fill the screen.

## Selecting the Design

- To make any adjustments to the design, first select it by clicking anywhere within the design. Black "handles" will now appear around the design.
- Deselect the design by pressing the Esc key, or by clicking anywhere on the screen away from the design.

*Black handles indicate the design is selected.*



## Modify the Design

Once the design is selected, the icons will be activated and appear in color (if the design is not selected, these icons will appear grayed out)



*Design is not selected; icons appear grayed out*

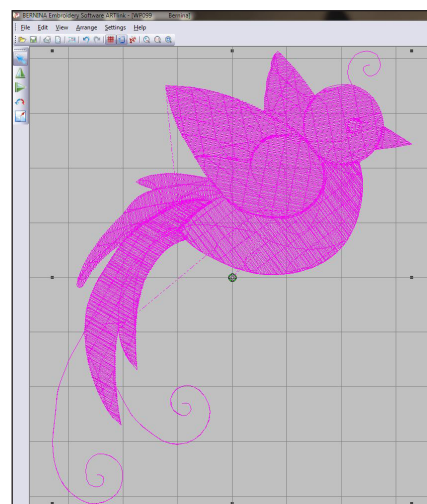


*Design is selected; icons appear in color*



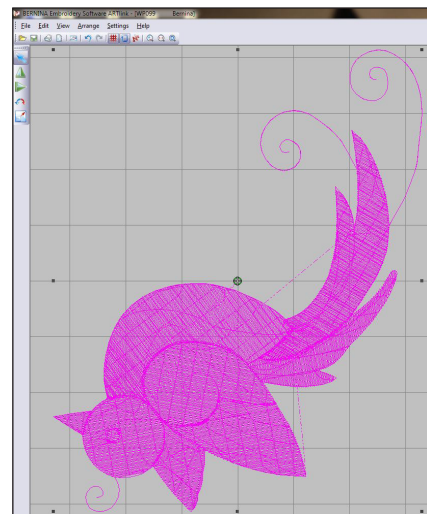
### Mirror Horizontal:

Select design and click the icon to mirror the image horizontally.



### Mirror Vertical:

Select design and click the icon to mirror the image vertically.



*Note: If you are in Design View and select the design, it will turn pink.*



## Modify the Design (continued)



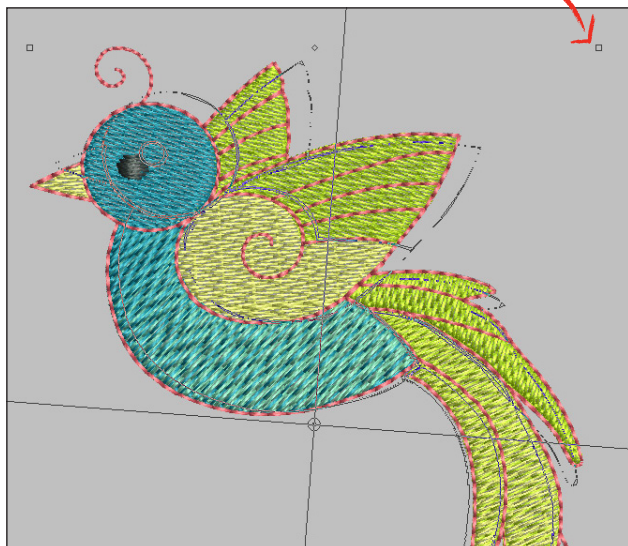
### Rotate 45 degrees CCW / CW:

Each time the Rotate icon is clicked with the LEFT mouse button, the design is rotated 45° counter-clockwise. Each RIGHT click rotates the design 45° clockwise.

### Rotate:

Click on the design twice, and the handles will appear hollow. Click one of the corner handles and drag. This will rotate the design in finer increments.

*Click the design twice and the hollow handles are shown. Click and drag a hollow handle to rotate the design.*



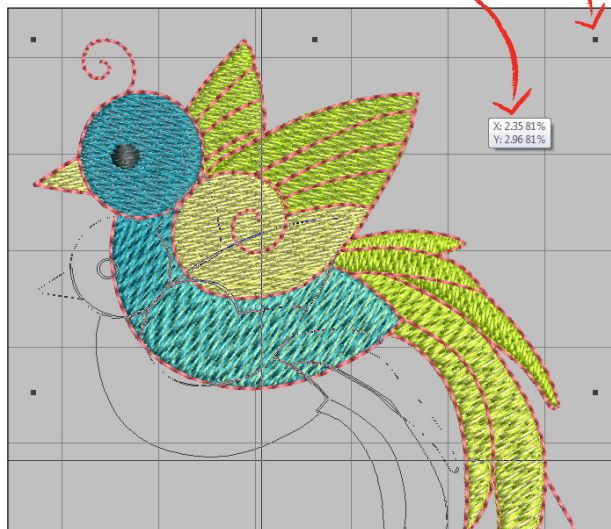
### Scale by 20% Down / Up:

Each time the Scale icon is clicked with the LEFT mouse button, the design is scaled down 20%. Each RIGHT click scales the design up 20%.

*Note: After the design is scaled, the new size is 100%.*

**Scale:** Click and drag one of the corner black handles to scale the design up or down in finer increments. The white box near the design shows the new X and Y measurement, and the percent the design has been scaled. Once the mouse is released, the new measurement of the design becomes 100%.

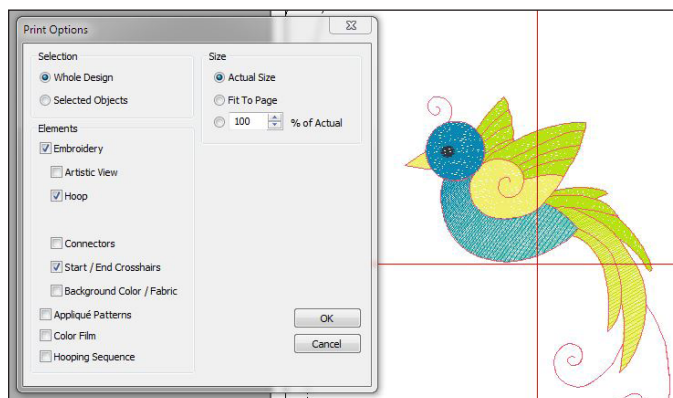
*Click and drag one of the corner black handles; the new size and reduction percent are displayed.*



## Print a Template

A printed template is helpful for previewing the design on the item to be embroidered, and as a placement aid.

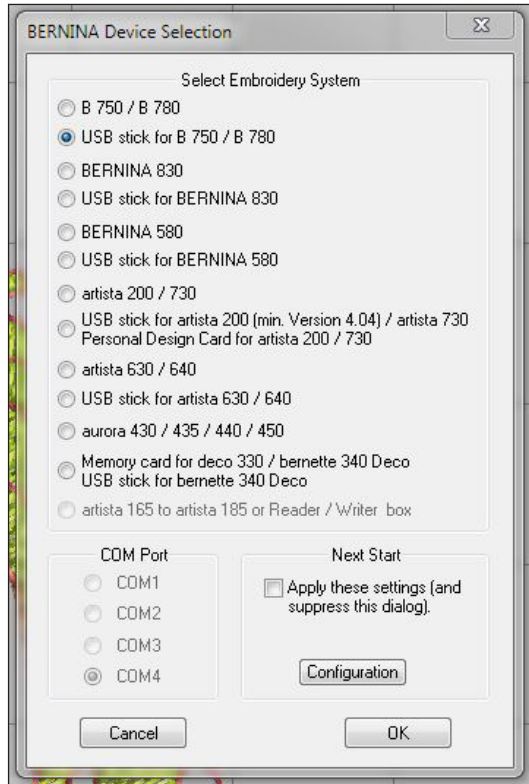
- Select File > Print Preview
- Click Options
- Under Size, select Actual Size
- Under Embroidery, Hoop, and Start / End Crosshairs should be selected
- Click OK
- Click Print Now to print your template
- Close the Print Preview screen to return to the embroidery design



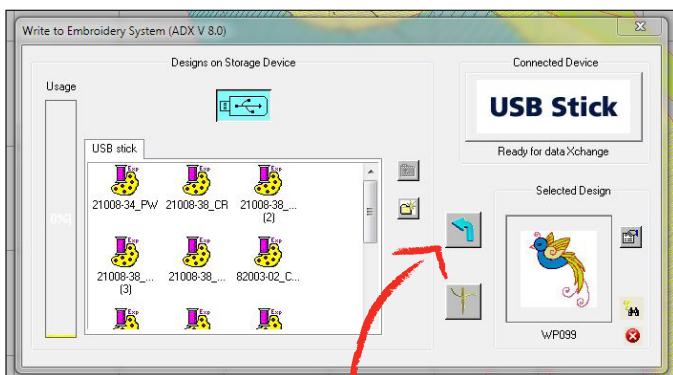
## Stitching the Design



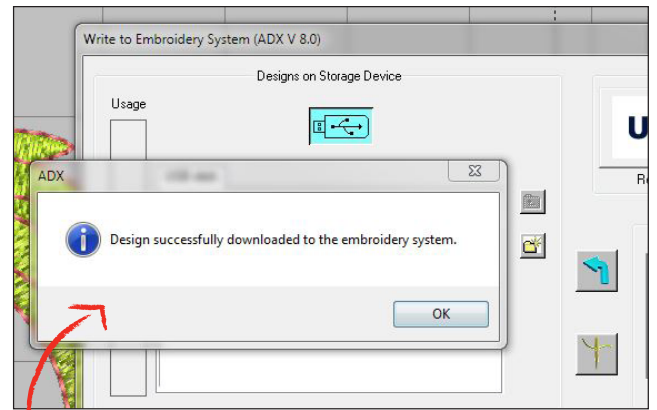
- Click the Write to Machine icon, or select File > Card/Machine Write from the menu
- The BERNINA Device Selection Box will appear
- Select your machine model from the list of devices (notice that some machines have the choice to write directly to the machine if direct connected, or to use a removable device such as a USB stick)



- Click OK
- Click the Blue Arrow to write the design to a USB stick, or send directly to the machine



Click blue arrow to write the design



- You will receive a message in a pop-up box that the write was successful
- Click OK to close the box
- The USB stick may now be taken to the embroidery machine for stitching

### For More Information

This guide is intended to get you up and running quickly and easily using ArtLink 6. For in-depth instruction, open the ArtLink 6 software and select Help > Onscreen Manual from the menu.

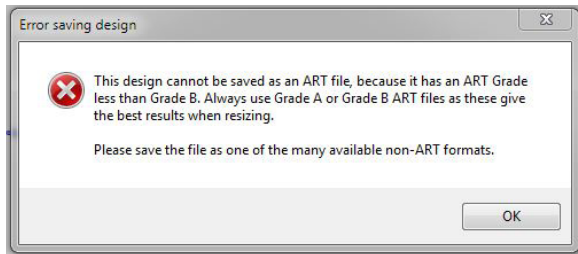
Page 47 of the Onscreen Manual has a list of shortcut keys for ArtLink 6. The Index starts on page 48. Press Ctrl+F to "find" or search the Onscreen Manual for keywords.

The most current downloads, files, upgrades and patches may be found at [bernina.com/ArtLink6](http://bernina.com/ArtLink6).

## Frequently Asked Questions

**Question:** How do I convert a design to .ART?

**Answer:** Embroidery designs that were originally created as another format cannot be converted to .ART. If you attempt to Save As the .ART format, you will see the error message below. However, when a design of another format is opened in software and written to the BERNINA machine or USB stick using the Write to Machine icon, the software automatically converts the design to the format needed by the model chosen in the Device Selection box.



**Question:** How do I convert a design to another format (other than .ART)?

**Answer:** With the design open onscreen, select File > Save As, and drop down the Files of Type box to the desired format. Click Save, being sure to note the folder location where you are saving the file. ArtLink 6 can open and convert many of the most popular embroidery formats.

**Question:** I can't get ArtLink 6 installed on my computer.

**Answer:** To open a help ticket with BERNINA Software Technical Support, visit: [bernina.com/SoftwareSupport](http://bernina.com/SoftwareSupport)

**Question:** My machine model is not on the list of devices when I click Write to Machine.

**Answer:** Download and install the latest software version and ADX Support package: [bernina.com/ArtLink6](http://bernina.com/ArtLink6)

**Question:** Will ArtLink 6 work with my aurora model?

**Answer:** Yes. ArtLink 6 includes EC on PC which is necessary for embroidering with aurora model machines.

**Question:** Will ArtLink 6 work with Windows 8?

**Answer:** Yes. Be sure the most current version of ArtLink and the ADX Support Package is installed.

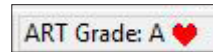
[bernina.com/ArtLink6](http://bernina.com/ArtLink6)

**Question:** Will ArtLink 6 work on a Mac?

**Answer:** ArtLink 6 may be installed and operated on a Macintosh computer, and is supported by BERNINA under the following configuration:

- The Mac is running OSx Lion or newer
- Bootcamp 4.0 is correctly configured
- Windows 7 is installed on the Bootcamp partition

**Question:** I see that my design is Grade A, what does that mean?



**Answer:** Designs opened in BERNINA Embroidery Software are given a Grade:

- Grade A = Pure .ART, original design was digitized by OESD or using BERNINA Embroidery Software.
- Grade B = Digitized by OESD, design pack number 11397 and Earlier.
- Grade C and D = Design originally digitized in another brand of software.

There is no way to improve the grade of an embroidery design, the grade is determined by how the design was originally digitized.

**Question:** What format design does my BERNINA machine accept?

**Answer:** Most current machines accept the BERNINA .exp format. This format consists of three files for each design:

- .exp is the embroidery design itself
- .bmp is the thumbnail image of the design
- .inf is the thread color information

The only exceptions are the the following older artista machine models which accept the .art (version 4) format:

- 160, 165, 170, 180, 185, 200, 730

To send a design to your BERNINA machine in the proper format, simply open the design in ArtLink, then select File > Card/Machine Write and choose your machine from the list of devices. The software will convert the design, and write the appropriate files for use in your model.