

TIP* Find something around your office this size to trace! I use a quarter, or a water bottle cap, cut in the corner of the lower bag, eliminating the area where the **X** is.

Clutch, Foam and Lining piece **A** Template

Step 16 -The turn-lock closure: Using one of the templates below. Cut it out on the outer black lines. Position on the front middle of your finished bag, see diagram on page 17, it will help you with position, and trace around it with the chalk or Frixion pen. Using an X-Acto knife, pierce a hole in the middle of tracing (fabric) and then use sharp embroidery type scissors to cut the shape out. Don't get crazy and cut it too big! You will be cutting through all the layers!

With scissors tip, nip about a 1/16" from the end of the oval towards the outer part of **screw holes (black dots)**, see white arrow on snipping diagram below. Now nip off the tiny triangles (see grey arrows) to reduce the bulk between the screw and the oval. Trim a bit at a time, until it is just right and the raised lip and screw holes clear the opening you created. Install this **straight**, measure and mark before installation. Only one template is required, but they are small so I have provided 2 templates just in case of loss! When you get just the right size, put a **bit** of Aleene's Clear Gel Tacky Glue all the way around on the innermost area of the outer fabric, insert the piece with the raised area, turn bag over and match with the flat piece, insert screws!

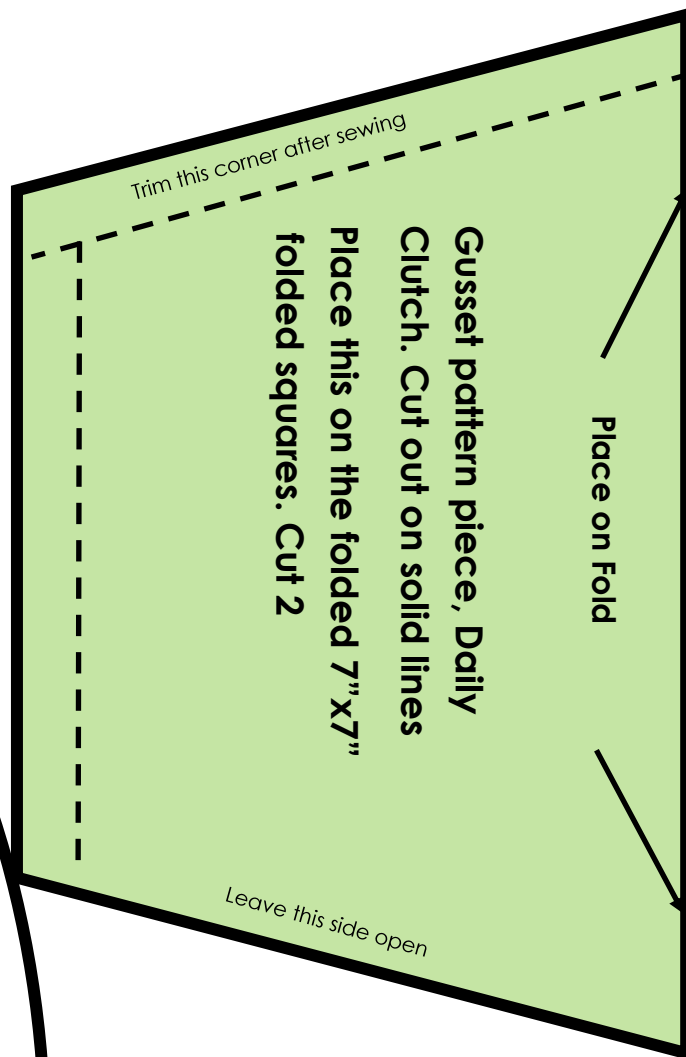
Step 17: The pronged part of the turn lock **ONLY GOES THROUGH THE OUTER BAG.** check diagram on pg. 17 Poke the prongs to make a dent, and mark it on outside of fabric. With your hand inside the bag (through the opening in the lining, pierce from the **outside**, the marked spots with the X-Acto knife, insert the pronged piece, then the slotted cover and spread the prongs. Remove your hand. Your **unharmd** hand, the mother in me wants you to be careful here!

Snipping diagram! Don't get snippy with me! Back to work.

First snip is white arrow, next snip the grey arrows and try the turn lock in your opening.

Tip: When inserting the Turn Lock, use a piece of tape for placing the TINY, LITTLE, not to mention SMALL screws. NOT KIDDING HERE! They love to wander.

Use this template for cutting out the curved top portion of the outer bag, foam and lining piece **A**. Cut on bold curved line!



Actual Size of oval

Actual Size of oval

This is the size oval to cut for the turn locks I use, available at Quiltsillustrated.com. There are many beautiful turn locks available out there on the market, so these instructions will work for most of them. There are also great video tutorials on YouTube, if you search for "turn locks for purses" or "twist turn locks for wallets" you will be able to find them. We also sell a great magnet closure too!

Foam
Outer Pocket
Cut 1, 7 3/4" W x 4" T

Foam
Outer Bag
Cut 1, 11" W x 18" T

Fabric #1 Larger Black Print
Cut 1, 11" wide x 18" tall
Outer bag,
watch fabric direction!
We will trim this after quilting
to: 9 1/2" wide x 16 1/2" tall

Fabric #1 Larger Black Print
Cut 2, 8" W x 6 1/2" T
Zipper Flaps

Fabric #3 Contrast Fabric
"D" Ring Tabs
Cut 2, 5" x 2"

FABRIC #1 Larger Black Print
Zipper End Covers
Cut 2, 2" X 1" Squares

FABRIC #1 Larger Black Print
Inside Pocket
Cut 1, 9 1/2" W x 8 1/4" T

Fabric #1 Larger Black Print
Handles
Cut 2, 4" x WOF Direction
doesn't matter!

Craf-Tex:
Cut 1, 8" x 4" - Lining B

Craf-Tex:
Cut 2, 7" x 2 1/2" - Zipper Flaps

Craf-Tex:
Cut 4, 8" x 1 1/2" - Stabilizing
Pieces

Fabric #2 Small Black Print
Lining B
Cut 1, 9 1/2" W x 16 1/2" T

Fabric #2 Small Black Print
Lining C
Cut, 1 9 1/2" W x 8" T

Fabric #2 Small Black Print
Outer Pocket
Cut 1, 8 3/4" W x 4 1/2" T

Fabric #2 Small Black Print
Gussets
Cut 2, 7" x 7"
And then use pattern on
page 5

Gusset for
LEFT side
Use this to
label after
gussets are
sewn.

Gusset for
RIGHT side
Use this to
label after
gussets are
sewn.

Fusible Fleece
Inside Pocket
Cut 1, 9" x 3"

Fusible Fleece
Handles
Cut 2, 4" x Width of fabric



Fabric #3 Contrast Fabric
Cut 1 9 1/2" W x 6 1/2" T
Lining A

This will be the curved top lining for the wallet and is the most amount of lining you will see when you open the wallet!

Fabric #3 Contrast Fabric
CC Dividers
Cut, 3 9 1/2" W x 4 1/2" T

Fabric #3 Contrast Fabric
Outer Pocket Lining
Cut 1, 8 3/4" W x 5" T