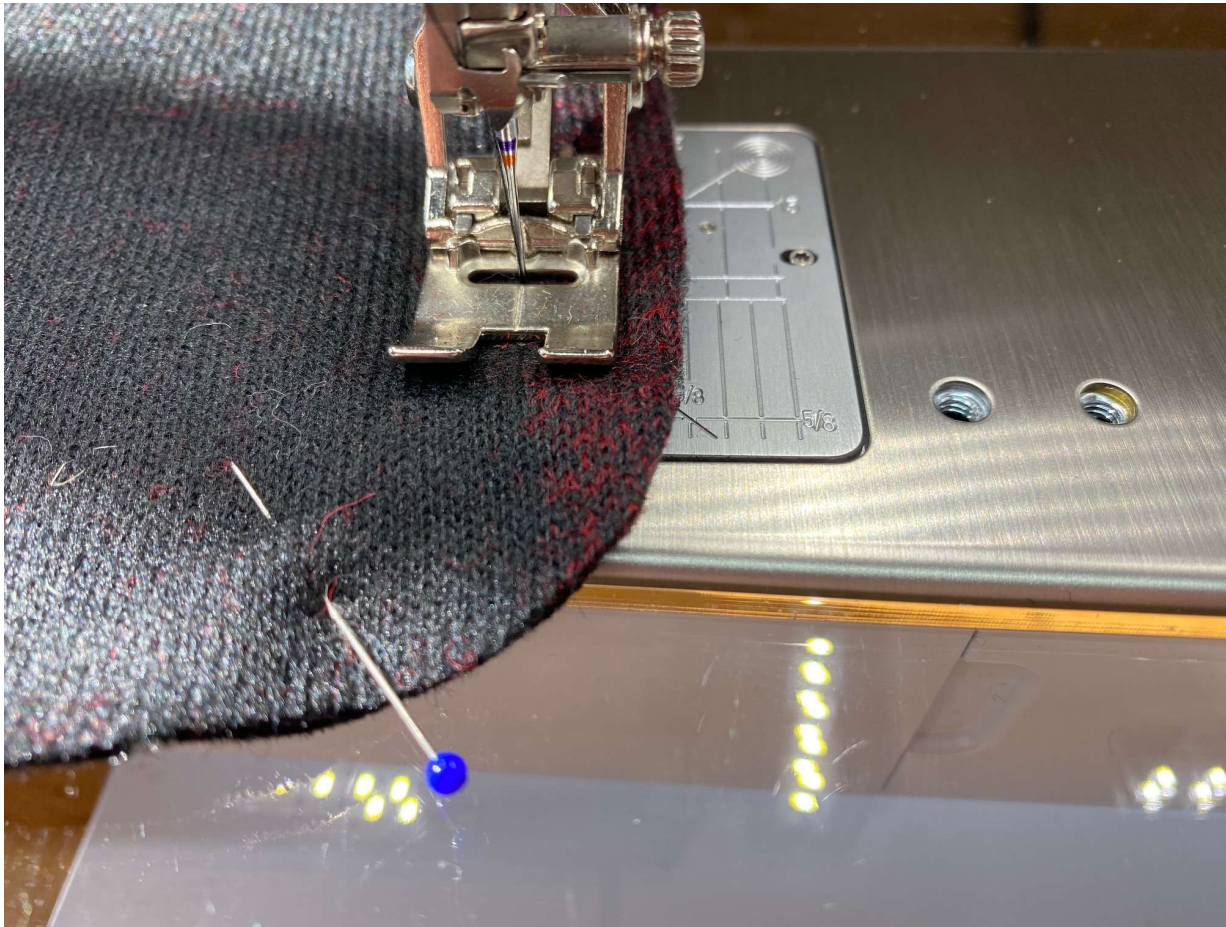
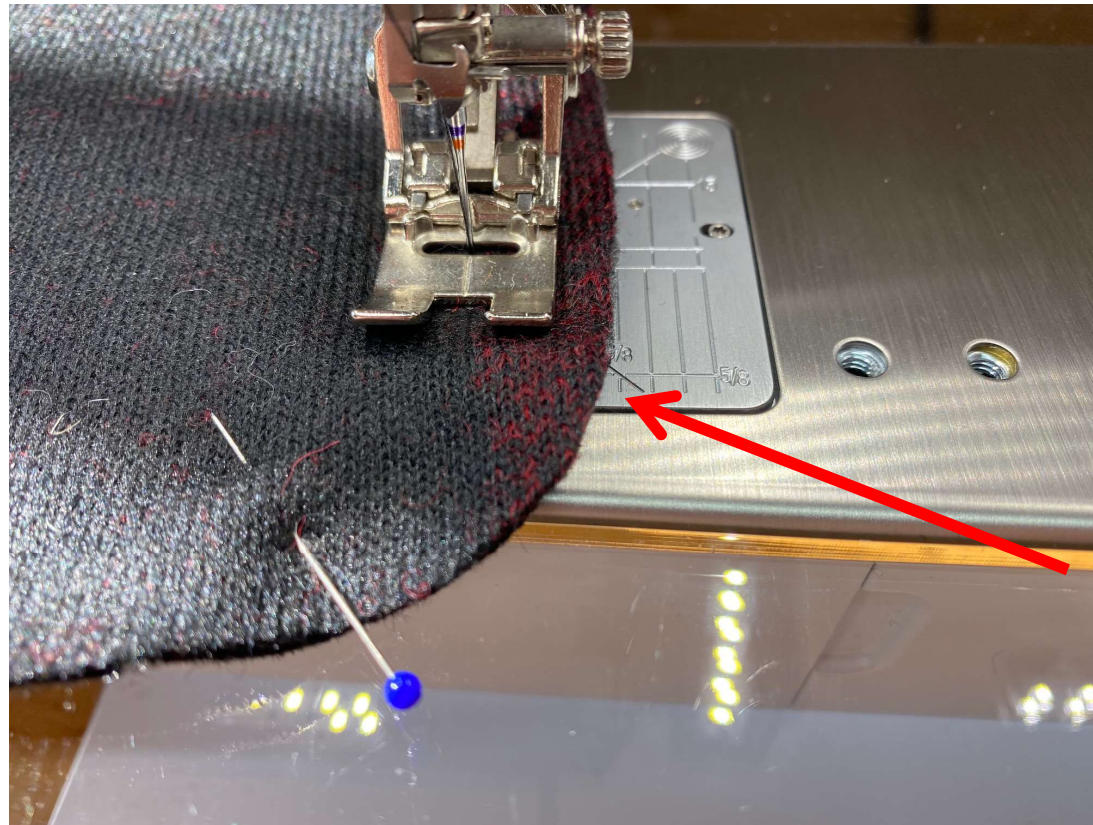


Avoiding Curve Distortion During Machine Stitching



These instructions refer to a 5/8" seam allowance and an outside curve. The principles also apply to any width seam allowance as well as inside curves.



5/8" Throat Plate Marking

Most people begin curving here. Don't do it yet!

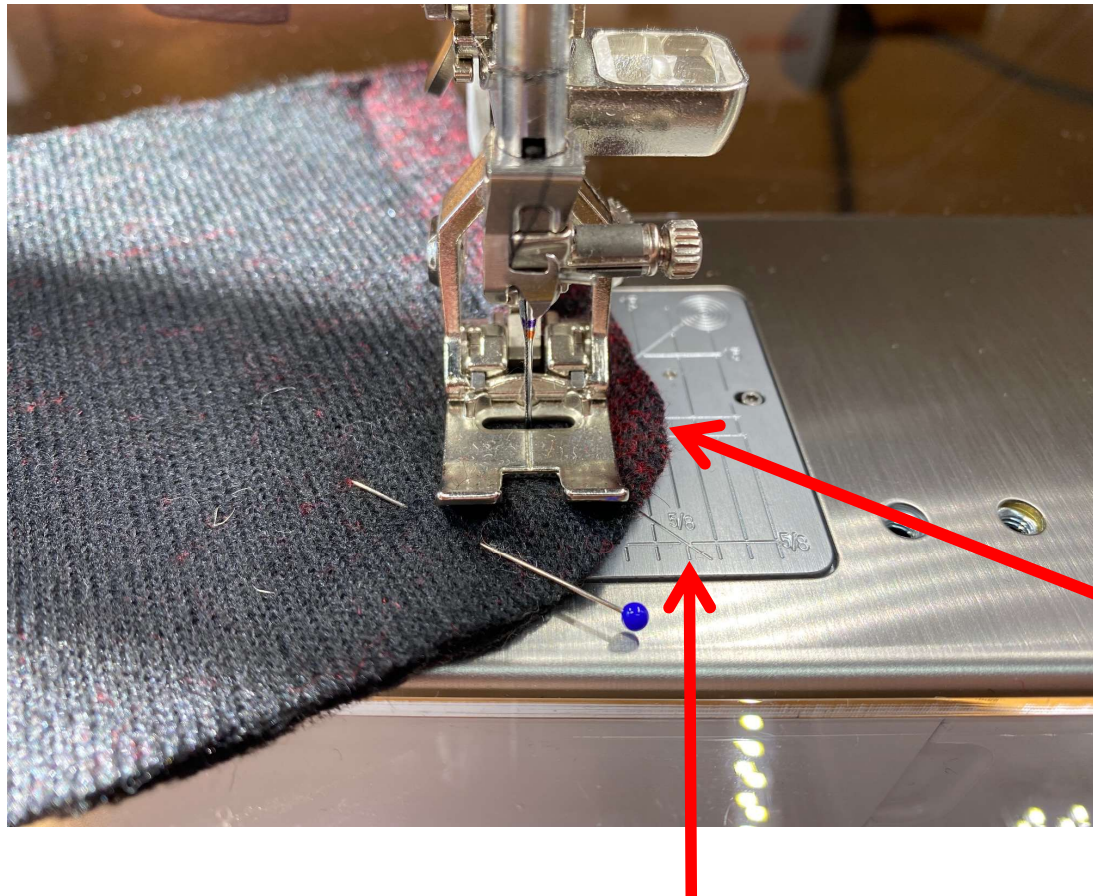
This is a collar pattern with straight edges leading up to the collar tip curve. The straight edge is properly aligned with the 5/8" line on the throat plate in this picture. This is where most people begin curving their stitching to keep the curve aligned with the 5/8" throat plate mark at the FRONT edge, well before the needle actually forms the stitch. This is not the time to begin curving.



The needle is still forming stitches along the straight edge. Don't curve yet!

Curve is no longer aligned with the 5/8" throat plate marking. This is correct.

Continue stitching in a straight line until the beginning of the curve aligns with the needle. Notice that the curved edge is no longer aligned with the 5/8" mark on the front of the throat plate. This is exactly what it should look like because the curve still hasn't reached the needle where the stitches are formed.



The beginning of the curve is now aligned with the needle. THIS is where you should begin curving the fabric to maintain your seam allowance AT THE NEEDLE.

5/8" Mark at front of throat plate

Begin curving the fabric when the first part of the curve is even with the needle. Continue curving while maintaining the seam allowance **EVEN WITH THE NEEDLE**. Notice how far away the rest of the curve is from the 5/8" mark on the front of the throat plate. This is correct positioning.



Continue curving AT THE NEEDLE until the next straight edge is aligned with the 5/8" mark on the front of the throat plate.

Next straight edge will eventually align at the 5/8" mark at front of throat plate. That's when you stop curving and begin sewing straight again.

Continue stitching around the curve, maintaining the seam allowance **EVEN WITH THE NEEDLE** until the next straight edge aligns with the 5/8" mark at the **FRONT** of the throat plate. (Sorry, I didn't get a picture of this.) Stitch straight along the straight edge until the next curve, (in the case of a collar). Then repeat these instructions for stitching any remaining curves.