



2018 Education and Event Calendar May - October

Welcome to our 2018 Education and Event Calendar, itemizing classes scheduled in May 2018 through September 2018.

We've scheduled classes and events to challenge your skills, enrich your sewing and embroidery experience, and provide you with opportunities to interact with like-minded sewers. We have a wide range of sewing, fabric art, quilting, home dec, and embroidery classes available. Our goal is to make SWI your favorite sewing/embroidery/quilting shop. We strive to bring you state-of-the-art tools and techniques, stimulate your creativity, and to simplify sewing and embroidery so that you may enjoy your craft. We hope you find our 2018 calendar of classes and events inspiring!

The classes and events we have scheduled (so far!) are included in this brochure. As additional classes are developed, we will add them to our web site, so check www.seworthit.com, often!

Class Pass (148805)

Purchase a SWI Class Pass for \$59.95 and attend as many eligible classes as your schedule permits – all for just \$10 a session!

Here's how it works:

- Purchase the SWI Summer 2018 Class Pass for \$59.95.
- Pay just \$10 per eligible class session, regardless of retail price!

Classes eligible for the class pass are designated with a CP in the class title.

Classes excluded from the class pass include (but are not limited to) longarm certification courses, Mastery courses and special event classes.

Class Pass classes are non-refundable once you have registered! Please check your schedule carefully before registering!

Take advantage of this great opportunity to learn a few new skills and interact with like-minded sewists!



Education and Event Calendar

SWI CLASS POLICIES

Scheduling:

- Every attempt will be made to hold these classes as scheduled.
- A minimum number of participants may be required to conduct the class. In the event a class must be rescheduled, we will let you know ASAP, and reschedule or refund the class fee, if necessary.

Cancellations:

- Class fees are payable upon registration.
- Class fees are refundable in the form of a store credit towards another class or a gift certificate (if applicable) if you cancel prior to 7 days before the scheduled class. If you need to cancel within 7 days, the class registration fee is not refundable.
- **SWI Class Pass classes (designated with CP in the title) are non-refundable once you have registered! Please check your schedule carefully before registering!**

Classroom Policies:

- **Please bring your machine in good working order. We love ALL sewing enthusiasts, and ALL brands are welcome.**
- **You must know how to operate your machine. Educators are not allowed to assist with machine operations.**
- **No food or drink, except for covered “water” bottles, are allowed in the classroom.**
- **You must own the pattern or book that is being taught in the class. Sharing of written materials is prohibited.**
- **Please turn off your cell phone, or set to vibrate before class. When taking calls, please respect your fellow students and leave the classroom to take your call.**
- **Classes start as indicated on the schedule. Please arrive at least 15 minutes prior to the scheduled start time to allow set up time. Arriving late disrupts the class and impacts every attendee’s learning experience.**



Education and Event Calendar

SWI Classroom Machines (SWI Destiny Customers Only)

One of the benefits of purchasing a Destiny from SWI is the ability to reserve one of SWI's classroom Destiny's for your SWI classes. This makes it even more convenient for you, and is provided to you, our Destiny customers, on a first come, first serve basis.

Reserving a Destiny is your responsibility – SWI staff will not automatically reserve a Destiny for you, so please make sure you request a Destiny when you register for a class.

- **Classroom machines only include the machine, power cord, foot pedal, and embroidery arm. You must provide all other machine parts needed for your class (e.g. – shank, thread stand, embroidery foot, walking foot, etc.).**
- **If you forget a machine part or accessory SWI will not be able to lend you one! Please be diligent as you pack for class!**
- You must call at least 24 hours prior to the class to cancel – if you are a no show, there may be a charge for the use of SWI Classroom machine in the next class
- Be sure to bring a sewing machine needle to put in the machine

Reserve your Destiny by calling or stopping by the store. If the classroom machines are already reserved, you are welcome to bring your own Destiny to class, or simply listen and learn!



Education and Event Calendar

Mastery Courses

Mastery courses are offered **EXCLUSIVELY** to **SWI machine customers**. When you buy a machine from SWI, these courses are **FREE** to you for as long as you own your machine. Take them once, twice, or whenever you feel you need a refresher! These courses, referred to as “**Mastery Courses**,” were developed to help you get the very most from your machine purchase.

You may register for **only ONE Mastery class at time**. Please note that a minimum of four participants is required to conduct the class. In the event a class must be rescheduled, we will let you know ASAP. Please make sure we have your current contact information.

There are three different categories of Mastery Courses – Sewing and Quilting, Embroidery, and IQ. See the schedule below for the specific class dates.

Sewing and Quilting Mastery Course Series

Explore the incredible power of your machine as we delve into 4 specific topics related to general machine operations, sewing and quilting.

Check our website for more details about each class!



BabyLock Mastery Course Series – Sewing and Quilting

Topic	Date(s)	Time	Class ID	
Machine Basics (S1)	Tuesday, April 6	10:00 AM – 12:00 PM	148489	Hands On
Sewing and Quilting Basics (S2)	Tuesday, May 8	10:00 AM – 12:00 PM	148490	Hands On
Troubleshooting (S3)	Tuesday, June 5	10:00 AM – 12:00 PM	148492	Lecture Demo
Decorative Stitches (S4)	Tuesday, July 10	10:00 AM – 12:00 PM	146493	Hands On



Education and Event Calendar

Embroidery Mastery Course Series

Get the most out of your embroidery machine by attending our NEW embroidery mastery class series. From which stabilizer to select, to how to position your design – we have you covered! **Check our website for more details about each class!**

BabyLock Mastery Course Series - Embroidery

Topic	Date(s)	Time	Class ID	
Fundamentals and Necessities (E1)	Thursday, April 26 Tuesday, July 24	10:00 AM – 12:00 PM	148496 148833	Lecture Demo
Embroidery Basics (E2)	Tuesday, May 22 Tuesday, August 14	10:00 AM – 12:00 PM	148493 148834	Hands On
Embroidery Placement (E3)	Wednesday, June 20	10:00 AM – 12:00 PM	148494	Hands On

IQ Mastery Courses

Exclusive to SWI Destiny and Valiant customers!



In addition to the BabyLock mastery courses listed on the previous page, we have two IQ specific mastery classes – all focused on the IQ embroidery capabilities of your Destiny or Valiant! These IQ classes will have you scanning and embroidering your own designs in no time!

DESTINY MASTERY CLASSES

Topic	Date(s)	Time	Class ID	
IQ Mastery Introduction - Basics (IQ1)	Wednesday, May 9 Wednesday, July 11	10:00 AM – 12:00 PM	148497 148806	Hands On with IQ – No Embroidery
IQ Mastery - Embroidery versus Applique (IQ2)	Wednesday, June 12 Wednesday, August 8	10:00 AM – 12:00 PM	148807 148808	Hands On



Education and Event Calendar

Serger Mastery Class

For SWI serger machine customers only!

Serged stitches add stretch and strength to seams, simplify edge-finishes, and are often used to embellish a project. With so many stitch options to choose from, it's hard to know which stitch to use on which fabrics and how to effectively set up your serger for the best result! Let us help! We'll cover everything from cleaning your machine, to how effectively thread your machine for a variety of stitch options!

Serger Mastery Class Dates:

Monday, May 7, 1:00 PM – 4:00 PM (148785)

Monday, June 11, 1:00 PM – 4:00 PM (148784)

Monday, July 9, 1:00 PM – 4:00 PM (148786)

Monday, August 6, 1:00 PM – 4:00 PM (148787)

Monday, September 10, 1:00 PM – 4:00 PM (148788)

Monday, October 8, 1:00 PM – 4:00 PM (148789)

Longarm Mastery Classes

For SWI longarm machine customers only! Now that you own your longarm machine, let SWI experts help you master your skills! In each of these mastery courses, we will focus on a specific topic. If you are a new SWI longarm customer, these courses are invaluable as you begin to explore the power of your new longarm quilting machine. If you've taken these courses before, consider attending again to brush up on your skills or ask the expert now that you have some "home hand on" experience.

As a SWI machine customer, you may take as many Mastery courses as you like – they are free and offered only to you --- our SWI machine customer!

Longarm Mastery Class Dates:

Saturday, April 14, 10:00 AM – 12:00 PM (147817)

Saturday, May 12, 10:00 AM – 12:00 PM (148673)

Saturday, June 9, 10:00 AM – 12:00 PM (148674)

Saturday, July 14, 10:00 AM – 12:00 PM (148675)

Saturday, September 8, 10:00 AM – 12:00 PM (148676)

Saturday, October 13, 10:00 AM – 12:00 PM (148677)



Education and Event Calendar

Longarm Certification

- May 24, Thursday, 10:00 AM – 4:00 PM (148956)**
- June 21, Thursday, 10:00 AM – 4:00 PM (148809)**
- July 26, Thursday, 10:00 AM – 4:00 PM (148810)**
- August 23, Thursday, 10:00 AM – 4:00 PM (148811)**
- September 20, Thursday, 10:00 AM – 4:00 PM (148812)**
- October 25, Thursday, 10:00 AM – 4:00 PM (148813)**



Ready to take your quilting skills to the next level? This hands-on class will teach you how to use a longarm machine. Once certified, you will be able to rent a SWI longarm to quilt your quilts! What fun!

During the class, you'll receive a Longarm Certification Handbook (to take notes and to take home) and a SWI Certification Card for identification. This card is for your use only and is needed to make a reservation to rent the machine. You will also receive your own very own set of zippers for the longarm leaders.

Class fee is non-refundable, non-cancellable, and non-transferable. To provide hands on training, there will be only four students in each class. Supplies needed for class - absolutely nothing! **SWI WILL PROVIDE EVERYTHING YOU NEED!**

Class Fee: \$175
Instructor: SWI Staff

Rent a Longarm

Complete your quilts faster than ever by renting SWI's longarm machines! You will be amazed at how easy it is to finish your own quilts on these industry leading machines.

In order to rent a SWI longarm, you must first be certified.



Education and Event Calendar

Summer Classes

Technique Classes:

CP – Quilting Academy

Class Session Dates: (4 sessions)

June 14, Thursday, 1:00 PM – 4:00 PM (148867)

June 28, Thursday, 1:00 PM – 4:00 PM (148868)

July 12, Thursday, 1:00 PM – 4:00 PM (148869)

July 26, Thursday, 1:00 PM – 4:00 PM (148870)



Whether you're new to quilting or have been quilting for years, you'll want to register for our all NEW Quilting Academy. In each of our four sessions, we'll focus on the critical skills and techniques you'll need to achieve perfect blocks and beautiful quilts. The first session will focus on fabric selection and preparation. We'll review the various options for selecting and combining fabrics, and help you select the perfect fabrics for your quilt. Color confidence is our goal, and you'll learn sew much in this first session!

Sessions two and three will focus on rotary cutting skills and techniques, as well as how to piece and trim accurately. We'll review a variety of options for making some of the most popular quilt blocks, and then show you how to layout your quilt blocks for optimal effect! We have sew many tips and tricks to share!

The fourth and final session will have you quilting with confidence and learning how to attach binding either by hand or by machine! We'll be with you every step of the way as you discover the joy of designing and creating your very own quilt! Join us!

Skill Level: Beginner

Class Fee: \$25 per session, \$100 total (\$40 total if you purchased the SWI Class Pass)

Instructor: Lisa

NEW – SWI's Embroidery Club

New this year, welcome to SWI's *Embroidery Club*! If you love machine embroidery... and like to learn new skills while creating a new project - then you need to join this monthly club! Each month we will feature a new design and a new project for you to create. More importantly, each month's class will teach you a new embroidery skill, or feature a new technique that you'll be able to apply again and again! You will learn multi-hooping, quilting in the hoop, dimensional embroidery, precise design placement and more! Increase your embroidery know-how and put your skills to the test while making some new friends!

The monthly embroidery designs and projects are designed with all skill levels in mind and all machine brands are welcome!



Education and Event Calendar

Each month features a new design, a new project and a new skill to learn! You will receive the embroidery design, written instructions (so you can make more!) and the fabric kit you will use in class. You will need to bring your embroidery machine, a USB stick, thread, stabilizer and general sewing supplies. See each month's club supply list for the specific details.

Monthly Club Session Fee: \$30/each – SWI Embroidery Machine Owners
\$40/each – Non SWI Embroidery Machine Owners

Purchase the Summer/Fall Season – Six (6) club sessions (May - October)

\$160 (SWI Embroidery Machine Owners) – Save \$20! (148817)

\$220 (Non SWI Embroidery Machine Owners) – Save \$20! (148871)

Club Dates and Embroideries:

Please note: The pictures for each monthly club session show the embroidery design, not necessarily the project you will make in class.

May 26, Saturday 10:00 AM – 2:00 PM



Sweet Feet: Stinkin' Cute Gym Shoes

These vintage style high top gym shoes are beyond cute – they are stinkin' cute! Personalize the shoe by creating it in your team colors, or with the name of your athlete! Sleeves of cookies fit just inside the shoe to create a sporty strip sock! Fun!

SWI Embroidery Machine Owners: 147993

Non SWI Embroidery Machine Owners: 147994

June 23, Saturday 10:00 AM – 1:00 PM

In the Hoop Mesh Bag!



This sweet zippered clutch is the perfect in the hoop embroidery project! Made entirely of thread, this bag will delight you as you stitch it in again and again! Perfect for gifts

SWI Embroidery Machine Owners: 148873

Non SWI Embroidery Machine Owners: 148872

Education and Event Calendar

July 28, Saturday 10:00 AM – 2:00 PM

Watermelon Pillow



Ahh! Summertime! Celebrate summer with this refreshing pillow -- perfect for your back porch or lanai! We'll embroider the sleeve in class. Take it home and decorate in style with your own pillow form, or join us on August 9th for a class on creating your own pillow forms!

SWI Embroidery Machine Owners: 148878
Non SWI Embroidery Machine Owners: 148879

August 18, Saturday 10:00 PM – 1:00 PM

That's Sew Chenille Heart Banner

Share the love with this darling chenille heart pennant! Make them for Valentine's Day, for your granddaughters bedroom, the options are endless! The applique features two variations for the chenille stitches, diagonal or chevron! Sew darn cute!



SWI Embroidery Machine Owners: 148875
Non SWI Embroidery Machine Owners: 148874

September 22, Saturday 10:00 AM – 1:00 PM

Dimensional Mylar Ornaments

Witch hats, spiders and pumpkins, oh Mylar! Machine embroidery is our favorite way to decorate! These designs will definitely add sparkle to your Halloween party! String several of the shapes together for a ghoulish garland, use as a bag topper, or use them to accent a scrapbook page.



SWI Embroidery Machine Owners: 148877
Non SWI Embroidery Machine Owners: 148876

October 20, Wednesday 1:00 PM – 4:00 PM



Snowflake Kiss Pillow

Redwork is the original word for outline embroidery hand sewn with red thread in the 1800's. The name is still used today to describe outline needlework in any color. This session's focus is using redwork to create stunningly simple embroideries. You'll also learn piecing and quilting in the hoop.

SWI Embroidery Machine Owners: 148885
Non SWI Embroidery Machine Owners: 148886

CP - Silhouette Workshop

September 17, Monday, 1:00PM – 4:00 PM (148955)



If you love applique, you either own – or are thinking about owning -- the Silhouette Cameo. It makes cutting applique shapes fast and easy! As with any software, there's a learning curve. This class is all about getting you comfortable with your Silhouette. We'll teach you the basics – scanning in your designs, cleaning up the scans, duplicating and mirroring, and navigating the menus. This workshop oriented class will be using the new “Beach Bound Tote” bag and the “Beach Comber”

appliques. If either one of these patterns are on your “to do” list – perfect! If not, no worries!! What you learn will be applicable to ALL applique projects!

Skill Level – Beginner and beyond
 Fee: \$25, \$10 with your SWI Class Pass
 Instructor: Lisa

Table Stitch, Tableset - Tablescapes!

Placemats, tabletoppers and tablerunners are perfect in sew many ways! They're ideal for experimenting with new quilting and sewing techniques; They can help you hone your embroidery, applique and quilting skills; They're fast -- and fun -- and oh so satisfying because they are easy to complete in a day or a weekend! Better yet, they can change with the seasons and are perfect gifts for everyone on your holiday gift list! Join us this summer and fall as we table stitch, table set and tablescapes!

CP – Leafy Lovely Placemats

June 1, Friday 10:00 – 3:00 PM (148896)

Accuquilt friendly!



These placemats are sew simple – but sew stunning! They are also the perfect, quick project for a little “practical practice” with your walking foot! Unlike traditional applique projects, you actually applique as you quilt, so this project is fast to finish, and very satisfying! Use your scraps for the leaves, or make it even easier by purchasing our leaf kit!

Skill Level: Beginner and Beyond
 Fee: \$25, \$10 with your SWI Class Pass
 Instructor: Lisa



Education and Event Calendar

CP – Cactus Flower Placemats

June 19, Tuesday 10:00 – 3:00 PM (148897)



Can you believe it? A single block takes center stage on each of these gorgeous place mats. The One Block Place Mat pattern contains complete directions for making place mats from a single, creative Triangle in a Square Block. Super fun and super fast!

Skill Level: Beginner and Beyond
Fee: \$25, \$10 with your SWI Class Pass
Instructor: Lisa

CP – Dresden Plate Placemats (Revealed at AMP)

July 6, Friday 10:00 – 3:00 PM (148898)

The magic of a Dresden Plate is undeniable. Blades can be a variety of sizes; There are various finishing options for the center and outside edges of the blades and the fabric and color combinations of the blades are endless -- that's what makes them so fun! Break free from the standard placemat pattern with our new Dresden Plate Placemats. Don't be intimidated by the look of this Dresden plate pattern – You'll love it!



Skill Level: Beginner and Beyond
Class Fee: \$25
Instructor: Lisa

CP – Glittering Diamonds Tablerunner (Revealed at AMP)

August 3, Friday 10:00 – 3:00 PM (148899)



Diamonds in three different sizes glitter across this dazzling tablerunner. Surprising simple to piece – and to quilt, you'll love this new, fresh take on tablescapes! This runner is sure to please! Join us!

Skill Level: Beginner and Beyond
Fee: \$25, \$10 with your SWI Class Pass
Instructor: Lisa



Education and Event Calendar

COMING SOON



CP – Fall Placemats (Revealed at HIJ)

September 7, Friday 10:00 – 3:00 PM (148900)

COMING SOON



CP – Holiday Runner (Revealed at HIJ)

October 5, Friday 10:00 – 3:00 PM (148901)

CP – Intro to FontWorks

May 10, Thursday, 10:00 AM – 1:00 PM (148775)



Lettering is essential to every embroiderer’s library, and everyone wants more fonts! FontWorks is the solution! FontWorks comes with 135 built-in fonts, letting you choose the perfect font for every project -- and even better - your lettering options don’t stop there. With FontWorks, you can import and use TrueType Fonts as embroidery fonts, too! The possibilities are endless.

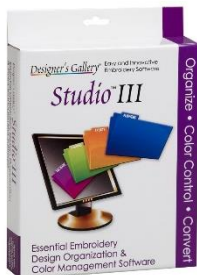
If you own, or are thinking about purchasing FontWorks, this class is for you! We’ll get you started with this amazing software – with quick tips and tricks to customized lettering! Join us!

Skill Level – Beginner and beyond
Fee: \$25, \$10 with your SWI Class Pass
Instructor: Lisa

CP – Introduction to Studio III Embroidery Software

Education and Event Calendar

June 14, Thursday, 10:00 AM – 1:00 PM (148776)



If you own (or are thinking about purchasing) Studio III, this is the class for you! Spend more time embroidering and less time searching. Studio III remembers where you save your designs even when you don't. We'll teach you how to make your embroidery selection process a snap! We'll even teach you about color sorting options for perfect embroidery every time! Let us help you shorten the learning curve for this wonderful software!

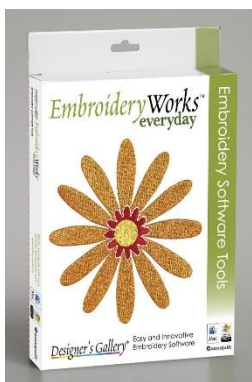
Skill Level: Confident Beginner and Beyond

Class Fee: \$25

Instructor: Kim

CP - EmbroideryWorks (148777)

July 13, Friday, 10:00 AM – 1:00 PM



EmbroideryWorks provides embroiderers with a toolbox filled with all the essential design editing functions needed to create beautiful embroidery. Like any software, however, it takes time to learn and master. If you purchased the software, but haven't really used it as much as you'd like, this is the class for you! From beginner to more advanced embroiders, our instructor will help you get the most from your software purchase.

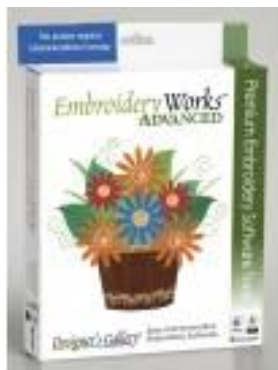
Skill Level – Beginner and beyond

Fee: \$25

Instructor: Kim and Lisa

CP - EmbroideryWorks Advanced (148778)

August 16, Thursday, 10:00 AM – 1:00 PM



EmbroideryWorks provides embroiderers with a toolbox filled with all the essential design editing functions needed to create beautiful embroidery. Like any software, however, it takes time to learn and master. If you purchased the software, but haven't really used it as much as you'd like, this is the class for you! From beginner to more advanced embroiders, our instructor will help you get the most from your software purchase.

Skill Level – Beginner and beyond

Fee: \$25

Instructor: Kim and Lisa

CP - Creator (148779)

Education and Event Calendar

September 14, Thursday, 10:00 AM – 1:00 PM



This intuitive and affordable digitizing software suite gives you the freedom to create embroidery, appliqué and cross-stitch designs by automatically converting your shapes into an embroidery machine format. Then, generate the stitch you want, or combination of desired stitches, for any and all parts of your design. From beginner to more advanced embroiders, our instructor will help you get the most from your software purchase.

Skill Level – Beginner and beyond
 Fee: \$25
 Instructor: Kim

CP – IQ Summer Flowers

June 8, Friday, 10:00AM – 2:00 PM (148902) Flower #1

June 22, Friday, 10:00AM – 2:00 PM (148903) Flower #2

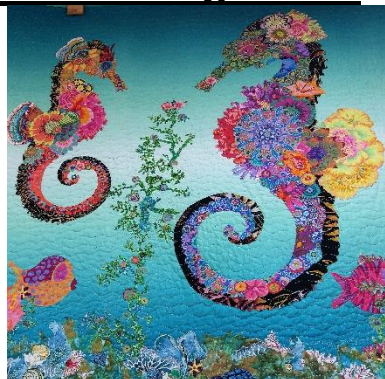


Exclusively for Destiny Owners, join us for an IQ design class! Learn how to scan a line image into your Destiny and create your very own embroidery design. Each of the two classes scheduled will focus on a specific flower image. The first class will focus on the Tulips. The second class will focus on the Pansy's. Please note that this is an IQ design class. We will be creating the design in class, but we will NOT be stitching out the design. You'll be able

to take your new embroidery design home (Don't forget your USB stick!), and stitch out your creation on a pillow, a placemat, or a runner! Once you learn how to use IQ to create your own embroidery designs, you'll be scouring the web for line images! Join us!

Skill Level – Beginner and beyond
 Fee: \$25, \$10 with your SWI Class Pass
 Instructor: Chris

CP – Collage Quilt



July 18, Wednesday, 10:00AM – 4:00 PM (148895)

Join us for this fun, and seriously creative collage quilting class! Class participants will choose their favorite collage pattern and learn how to let their imagination soar! This is a truly inspired class – innovative, artistic, and most of all – fun! Start collecting your favorite fat quarter florals and prints and join us for a delightful day of quilting inspiration!

Skill Level – Beginner and beyond
 Fee: \$25, \$10 with your SWI Class Pass
 Instructor: RuthAnn

CP – Reversible Apron

Education and Event Calendar

July 16, Monday, 10:00AM – 2:00 PM (148894)



Inspired by a drawing of a vintage apron, this reversible apron features a sweetheart neckline and an umbrella hemline. Perfect for a gift, but this apron is sew stylish, you'll want one – or two – for yourself! Attend the class and learn a variety of great techniques for accurate, and stress free sewing! You will enjoy making and wearing this apron!

Skill Level – Beginner and beyond
 Fee: \$25, \$10 with your SWI Class Pass
 Instructor: RuthAnn

CP - Sit and Sew - Weekly

Join us twice a month for a **FREE** sit and sew session. SWI staff members will be available to help you with your current project – plus you get to catch up with your friends in a fun, friendly environment. Finish your projects, get help from the SWI team, and be social! The sessions are free, but registration is required.

Class Fee: Absolutely None – It's Free!

June 4, Monday, 1:00 PM – 4:00 PM – 148796

June 25, Monday, 1:00 PM – 4:00 PM – 148797

July 9, Monday, 1:00 PM – 4:00 PM – 148798

July 23, Monday, 1:00 PM – 4:00 PM – 148799

August 6, Monday, 1:00 PM – 4:00 PM – 148800

August 20, Monday, 1:00 PM – 4:00 PM – 148801

September 10, Monday, 1:00 PM – 4:00 PM – 148802

September 24, Monday, 1:00 PM – 4:00 PM – 148803



Education and Event Calendar

SWI Summer Class Pass

Valid May 1, 2018 – October
31, 2018

(148805)



Purchase a SWI Class Pass for \$59.95 and attend as many eligible classes as your schedule permits – all for just \$10 a session!

Here's how it works:

- Purchase the SWI Summer 2018 Class Pass for \$59.95.
- Decide which eligible classes you would like to attend.
- Pay just \$10 per eligible class session, regardless of retail price!

Classes eligible for the class pass are designated with a CP in the class title. Classes excluded from the class pass include (but are not limited to) the longarm certification courses, Mastery courses and other classes not specified as "CP".

Once you have registered for the Class Pass, and paid your \$59.95 registration fee, the rest is easy! Decide which class sessions you would like to attend and ask a SWI team member to help you enroll. Each class session is just \$10!

Each class has a maximum number of participants, and registration is on a first come, first serve basis. With the incredible value of our SWI Class Pass, we expect many of these classes will fill up quickly, so register early!

Considerable time and energy has been invested in designing the class and preparing the class samples. **Therefore, it's important that you note the following cancellation requirements:**

- **There are NO REFUNDS for class pass classes.** Please check your schedule carefully before you register for a class.
- If you no show more than two times, your SWI Class Pass may be suspended.
- **Please utilize SWI fabric and supplies for your class pass projects. We appreciate your support!**