

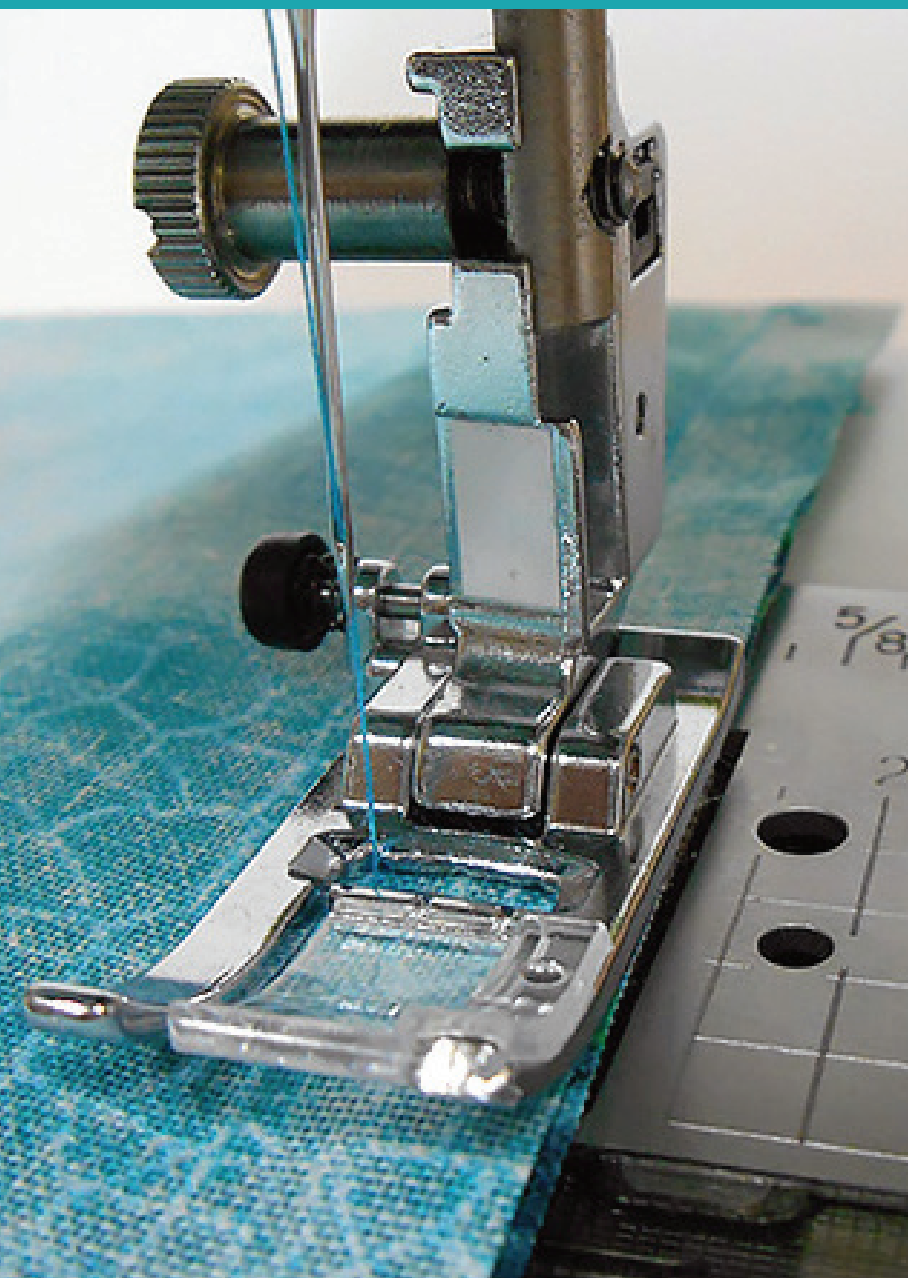
brother
at your side

ACCESSORY FEET

SEWING | QUILTING | DECORATIVE EMBELLISHMENT



GENERAL SEWING FEET



Inspiration begins with having the right tools. And when it comes to revolutionary sewing machines, coupled with just the right accessories, Brother is always “at your side.”

Consider our extensive lineup of versatile and exceptionally crafted sewing feet. Explore the techniques and added capabilities that over 92 varieties can bring to your sewing skills. Enhance your results across five disciplines: General Sewing, Quilting, Decorative Embellishment, Embroidery and Serger. Whether it's finessing intricate effects, working with tricky fabrics, or just making the difficult easy, let Genuine Brother Accessories guide the way and put you on solid footing.



DIY

Zipper Pouch

A great beginner sewing project and easy to make. These DIY zipper pouches are fun gifts and handy for storing small items. Try this simple DIY tutorial on how to sew a zipper pouch.

[LEARN MORE](#)

SA102



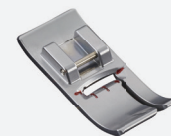
Concealed Zipper Foot

For easy installation of concealed zippers. This foot hugs the zipper teeth without bunching or snagging and sews a perfect seam straight down the teeth to make your zipper, in fact, concealed.

[LEARN MORE](#)



SA103



Bi-Level Foot (Right)

For precise topstitching and edge stitching over seams and different thicknesses of fabric on the right side. This foot has two levels under the base to accommodate bulky seams and edges. Improve your finishing and topstitch those purse/bag handles with ease.

[LEARN MORE](#)

SA104

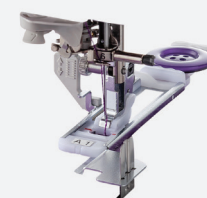


Bi-Level Foot (Left)

For precise topstitching and edge stitching over seams and different thicknesses of fabric on the left side. This foot has two levels under the base to accommodate bulky seams and edges. Improve your finishing and topstitch those purse/bag handles with ease.

[LEARN MORE](#)

SA105

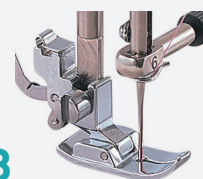


Binding Buttonhole Foot

Binding Buttonhole Foot for XP/XV/V/BQ3050/BQ2450 Series: Easily make buttonholes the size of the button. Perfect for various thicknesses of fabrics.

[LEARN MORE](#)

SA108



5mm Straight Stitch Foot

The design of this foot improves contact with the feed dogs, resulting in a more accurate and consistent feed which creates a higher quality straight stitch.

[LEARN MORE](#)

SA111



Binding Buttonhole Foot

Easily make buttonholes the size of the button. Perfect for various thicknesses of fabrics.

[LEARN MORE](#)

SA114



7mm Non-Stick Foot

This non-stick foot glides over difficult fabric surfaces with ease, while also improving stitch quality in many problem fabrics.

[LEARN MORE](#)





SA122



5mm Non-Stick Foot

This non-stick foot glides over difficult fabric surfaces with ease, while also improving stitch quality in many problem fabrics.

[LEARN MORE](#)

SA126



7mm Narrow Hem Foot

The groove under the foot is slightly wider and flatter than the Picot Foot and is designed to create a flat, narrow hem on lightweight fabrics.

[LEARN MORE](#)

SA127



5mm Narrow Hem Foot

The groove under the foot is slightly wider and flatter than the Picot Foot and is designed to create a flat, narrow hem on lightweight fabrics.

[LEARN MORE](#)

SA131



Adaptor for low shank attachments

Some screw on feet will not have adequate height to be used with some of our embroidery/sewing machine's presser bar. The adapter is used to add height to low shank screw on feet to insure proper fitment as well as pressure on the fabric.

SA133



7mm Blind Stitch Foot

Perfect for edge stitching, attaching lace, and fabric edge joining. Adjustable, open-toed guide makes this a great foot for both embellishing and utility stitching, and works with straight and decorative stitches.

[LEARN MORE](#)

SA134



5mm Blind Stitch Foot

A great foot for both embellishing and utility use. Adjustable for creating blind hems on a variety of fabrics. While designed for blind stitching, the foot works well for edge stitching, lace, and fabric edge joining.

[LEARN MORE](#)

SA135



5mm Overlock Foot

The Overlock Foot is used for sewing overcast seams and it protects edges from fraying. Use the overcast stitches in your machine and see what a difference this foot makes in their appearance and functionality.

[LEARN MORE](#)

SA161



Adjustable Zipper & Piping Foot

This foot easily attaches zippers and pipings. Its position can be adjusted exactly on the edge of the zipper/piping, thus avoiding the non-flat parts of them. It also presses the fabric with just the right pressure.

[LEARN MORE](#)

SA167



Straight Stitch Foot

Used exclusively for straight stitch applications for fine or light weight fabrics. Straight Stitch centers the needle position foot. Single needle hole prevents fine fabrics from being caught in feed dogs. Curved foot toes travel over varying fabric thicknesses.

[LEARN MORE](#)

SA149



5mm Picot Foot

Designed to create a shell look edge on lightweight fabric. Roll fabric edge and hem stitch at the same time.

[LEARN MORE](#)

SA164

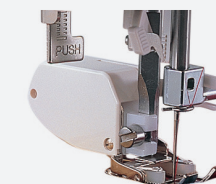


7mm Picot Foot

Decorative narrow hem foot for picot hem finishes. The Picot Foot looks similar to the narrow hem foot but is designed to create a shell look edge on lightweight fabric. Includes a grooved soleplate for picot stitch formation and cone-shaped feet channel for edge finishing.

[LEARN MORE](#)

SA169



5mm Walking Foot

The Walking Foot is great for quilting or sewing when matching prints, plaids, or you need to avoid fabric shifting. Single needle hole prevents fine fabrics from being caught in feed dogs. Movable feet dogs assist in moving fabrics from both upper and lower surfaces.

SA160

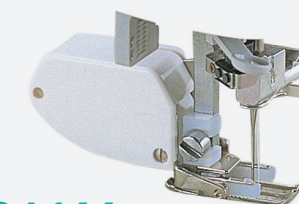


Stitch Guide Foot

With an incrementally marked ruler, a horizontal opening for wide range of left to right needle positions, and added sole pressure, this foot helps you achieve accurate sewing every time.

[LEARN MORE](#)

SA166



Walking Foot for PE300 Series

The Walking Foot is a moving feed system that holds and moves fabric between the presser foot's upper feed dog and the machine's lower feed dogs to better control difficult fabrics as well as multiple layers of fabric. The Walking Foot is great for quilting or sewing when matching prints, plaids, or fabric drift is an issue.

PROFESSIONAL



SA170

Spring Action Guide 3 Set for PQ Series

The SA170 set, was adapted especially for use on the Brother PQ-Series machines and includes three sizes - 2mm, 5mm, and 8mm. These convenient feet are equipped with durable metal guides that hold the fabric securely for perfect edge-stitching and topstitching yet are equipped with spring action for easy transition to standard sewing.



SA171

Gathering Foot for PQ Series

The Gathering Foot can be used for lightly gathering fabric as well as attaching the gathered edge to a flat (un-gathered) fabric, at the same time quickly and easily. The Gathering Foot will allow the sewer to gently ease or slightly gather fabric for various garment and home decorating applications.



SA172

Very Narrow Foot for PQ Series

This Narrow Foot can slip into very small areas while providing a reliable surface to maintain contact with the feed dogs. It's that foot we used to dream about for those tight corners, working up against a ridge, or other similar situations.



SA173

Heavy Weight Foot for PQ Series

The Heavy Weight Foot has a larger "foot print" that assures better contact of the fabric to the feed dogs. It can therefore be used to beautifully aid in the proper feed of canvas, fake fur, lace, or quilted fabric beautifully without applying extra or excessive pressure to the presser bar and on to the fabric.



SA176

Low Shank Zigzag Foot with Ankle Set

This zigzag foot with ankle set has a snap-on foot for sewing over rises at the beginning of, or in the body, of your fabric. No more getting stuck at a rise or uneven stitches on the downside!



SA177

7mm Side Cutter

Use for cutting, trimming, and sewing in one operation. Cut fabric and overcast fabric edges at the same time.

[LEARN MORE](#)



SA184

Edge Joining Foot

Used to easily join two pieces of fabric or attach lace or trim. This foot holds fabrics in place while leaving a space to allow open decorative stitches such as open weave stitches. The middle metal guide keeps pieces perfectly aligned while joining.

[LEARN MORE](#)



SA189

Vertical Stitch Alignment Foot

Use for top stitching for straight and curved lines for precise seams.



SA190

Roller Foot

Perfect for sewing on vinyl, velvet, suede, and leather fabrics. The dual rollers on this 7mm snap-on foot help provide for more accurate and consistent sewing, as the rollers work in tandem with the machine feed dogs to pull the fabric through for a more consistent fabric surface.

[LEARN MORE](#)

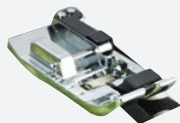


SA192

7mm Piping Foot

Designed for creating custom piping, for home décor and other uses. The over-sized channels in this 7mm snap-on foot provide more accurate placement of piping, and the wide needle opening allows for a range of stitch widths.

[LEARN MORE](#)



SA191

Stitch in the Ditch Foot

Designed for quilting and other projects that require stitching over an existing seam, this foot rides smoothly over the seam, helping to ensure your stitching remains more perfectly aligned while you 'stitch in the ditch.'

[LEARN MORE](#)



SA195

MuVit Open Toe Dual Feed Foot

Provides all the functions of the MuVit Dual Feed Foot. It is recommended for any application where extra visibility in sewing is desired. This foot features a wide opening for a wide range of left to right needle positions.



GENERAL SEWING FEET

SA200



Couching Dual Feed Foot for V-Series Machines
Enjoy creating fabric surface embellishments using yarn and decorative cords with this easy-to-use, dual feed couching foot. Includes the couching dual feed foot, yarn guide, yarn threader, and instruction sheet.

SA206



Dual Feed Quilting Guide
This Dual Feed Quilting Guide helps you stitch straighter lines and is designed specifically for use with the MuVit Dual Feed Foot device. Included are a Right Guide and a Left Guide that are both adjustable up to 2 3/8" from the center needle position. A quilting guide base and screw are also included.

SA204



Stitch in the Ditch Dual Feed Foot for XV & V-Series
This foot helps provide more efficient feed movement and is designed for use with the MuVit Dual Feed Attachment. Perfect for quilting garments and other projects that require stitching over an existing seam.

SA208



7mm Narrow Zipper Foot
This presser foot is useful for attaching various kinds of zippers.

[LEARN MORE](#)

SA205



Dual Feed 1/4" Guide Foot
This Dual Feed 1/4" Guide Foot makes it easier to sew heavy fabrics in a straight line and is designed specifically for use with the MuVit Dual Feed Foot device.



SA209

Compact Dual Feed Foot
The MuVit Dual Feed Foot can powerfully feed fabric from the top and bottom, with all of that power is packed into an amazingly compact body! This digitally-controlled, direct motor-driven accessory foot was designed for difficult projects which require special handling. Dual feed power makes it incredibly easy to sew precise, uniform stitches on a range of fabrics like leather, faux fur, and silk.

BROTHER EDUCATOR FAVORITE
"In my dreams I am stitching my thick, quilt sandwich together without worrying about inconsistent stitching or fabric bunching with this smaller profile Compact MuVit. Could. Not. Dream. Without. It."

NEW
FOR
2023

SA216



Enhanced N Plus (+) Foot
This foot features a satin finish surface for smooth and stable feeding of fabrics. There is also a plastic guide on the foot to minimize misalignment when sewing.

[LEARN MORE](#)

SA538



Seam Guide
For guiding fabric edge with an accurate 1/4", 1/2", or 5/8" (approx. 6.5, 13 or 16 mm) seam.

SA564

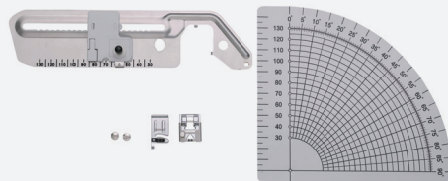


Straight Stitch Foot & Straight Stitch Needle Plate
For perfect straight stitching when sewing thin fabrics. For Use With: Innov-is NQ1300PRW, Innov-is NQ3500D, Innov-is NQ700PRW, Innov-is NQ900PRW



SA5FTPKG

5 Foot Embellishment Pack
To enhance your creative possibilities as you sew. Includes Stitch in the Ditch Foot, Roller Foot, Piping Foot, Edge Joining Foot, and Gathering Foot.

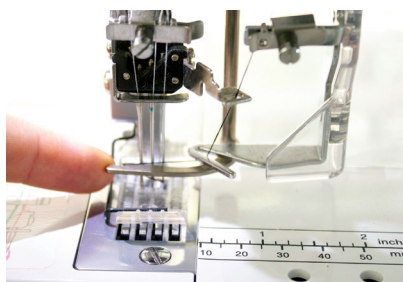


SACIRC1

Circular Attachment Bundle
Sew circular patterns that graduate out at 5mm intervals, ranging from 30mm to 130mm in radius when the center needle position is selected.



SERGER AND COVER STITCH FEET



SERGER FEET

SA210

Piping Foot for Serger
Holds and guides piping, thus eliminating the need for pins as piping and fabric are serged together.

[LEARN MORE](#)



KEEP YOUR CREATIVITY SERGING

Brother's Overlocker Feet and accessories are designed to raise your serging skills to the next creative level. Achieve the specialized effects you visualize, with greater speed and ease, even when working with thin or stretchy fabrics. Ready-to-wear details and decorative accents are a breeze with our range of versatile options. Create the looks you want, the way you want them, with consistent, quality results.

SA211

Pearl Sequence Foot for Serger
Holds and guides pearls as you use your overlock machine. Guides up to 5mm stranded pearls for one step attachment. Adjustable stitch length avoids needle breakage.

[LEARN MORE](#)



SA212

Elastic Foot for Serger
Attach and sew elastic or tape in one easy step with your overlock machine. Adjustable stitch width up to 12mm. Channel on foot secures elastic or twill tape to fabric, thus eliminating the need for pins as you create a serged edge. Gathers knits as elastic is attached.

[LEARN MORE](#)



HOW TO

Sew Shirts and Hem with a Coverstitch

Learn how to add coverstitch, top-stitching, and hems to a t-shirt to create a beautiful custom finish. This step-by-step tutorial will also show you how to use a double coverstitch for a sporty look. Let's go learn how to sew!

[LEARN MORE](#)



SA213

Gathering Foot for Serger
Now you can gather and edge finishing in one operation. Serge finish fabric edges with this snap-on foot.

[LEARN MORE](#)



SA214

Blind Stitch Foot for Serger
Create a nearly invisible hem, trim the fabric, and finish the raw edge in one step. Apply to the edge of a fabric using a 3-thread overlock wide stitch or apply to the middle of the fabric by stitching on the fold using a flatlock stitch.

[LEARN MORE](#)



SA217

Pearl Sequence Foot for Serger
Use this foot to attach strung pearls, beads, or sequins with your serger. From 3mm to 5mm (1/8 to 13/64 inch) sequins and pearls can be sewn with this foot.

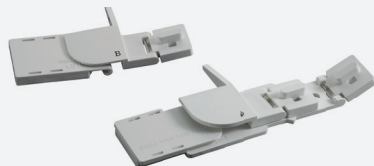


COVER STITCH FEET

SA221CV

Hemming Set for Cover Stich Machine
To make single- or double-fold hems.

[LEARN MORE](#)



SA222CV

Bias Tape Folder for Cover stitch machine
For folding and attaching 12 mm (1/2") wide bias tapes.

[LEARN MORE](#)



SA223CV

Belt Loop Guide for Cover stitch machine
To make belt loops or straps of 11 mm (1/2") wide.

[LEARN MORE](#)



SA224CV

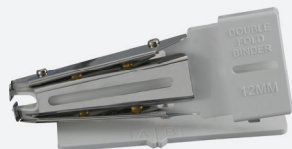
Bias Tape Binding Set for Cover stitch machine
For folding and attaching 6 mm (1/4") or 12 mm (1/2") bias tapes to fabric edge.

[LEARN MORE](#)



SA225CV

Double-Fold Binder for Cover stitch machine
For making and attaching 12 mm (1/2") tape in one operation.



SA226CV

Top Stitching Foot Set for Cover stitch machine
For decorative top stitching.



SA230CV

Bias Tape Binding Set
For folding and attaching 6 mm (1/4") or 12 mm (1/2") bias tapes to fabric edge.

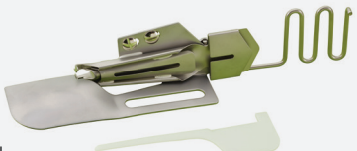
[LEARN MORE](#)



SA231CV

Dual Function Fold Binder
For making and attaching 8 mm (5/16") tape in one operation.

[LEARN MORE](#)



QUILTING FEET



GETTING A GRIP ON QUILTING

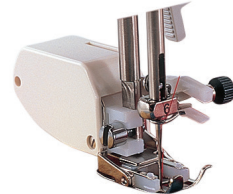
Experienced quilters know, one of the toughest challenges for any project is preventing the fabric from slipping. This is especially true when quilting three layers, matching intricate patterns, such as plaids and stripes, or working with slippery fabrics like velvet. But getting a grip is easy. Reach for the Brother Walking Foot, a dependable and trusted quilting companion for ensuring a clean and even feed.



SA101

Dynamic Walking Foot Set
This foot set helps prevent difficult fabrics from stretching, slipping, or sticking between the presser foot and the material.

[LEARN MORE](#)



SA107

5mm Walking Foot
For sewing or quilting on fabrics which stick or tend to slip. Useful for sewing multiple layers.

[LEARN MORE](#)



SAQUILT (SA125)

1/4" Piecing Foot
For quilt and patchwork piecing with 1/4" or 1/8" seam allowance.

[LEARN MORE](#)



SA129

Quilting Foot
Spring action foot for darning, quilting, or free-motion embroidery.

[LEARN MORE](#)



SA132

Quilting Guide
Handy for matchstick quilting. To set precise distance from one point to another.

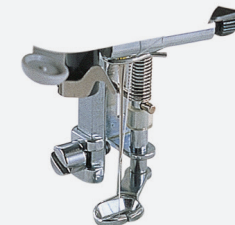
[LEARN MORE](#)



SA140

7mm Walking Foot
For sewing or quilting on fabrics which stick or tend to slip. Useful for sewing multiple layers.

[LEARN MORE](#)



SA165

Quilting Foot for PQ Series
This presser foot is useful for darning and free motion machine quilting.



SA185

1/4" Piecing Foot with Guide
For sewing an accurate 1/4" (6.4mm) or 1/8" (3.2mm) seam allowance.

[LEARN MORE](#)



NEW
FOR
2023



SA218

Ruler Foot High Shank
Quilting/Sewing: Designed to be used when quilting with rulers or templates, the edge of this ruler foot is lower/thinner than other free motion feed to prevent the ruler from sliding under the needle as you are stitching.

[LEARN MORE](#)

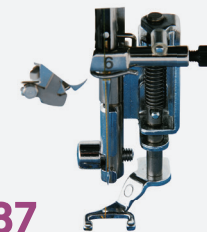
NEW
FOR
2023



SA219

Ruler Foot Low Shank
Quilting/Sewing: Designed to be used when quilting with rulers or templates, the edge of this ruler foot is higher/thicker than other free motion feed to prevent the ruler from sliding under the needle as you are stitching.

[LEARN MORE](#)



SA187

Open Toe Quilting Foot
The opening on the foot gives you wide visibility.

[LEARN MORE](#)



SA188

7mm Open Toe Walking Foot
The open front gives you greater visibility.

[LEARN MORE](#)



SA215

Interchangeable Toe Set for Dynamic Walking Foot
This presser foot set is designed for the Dynamic Walking Foot.

[LEARN MORE](#)

DECORATIVE EMBELLISHMENT FEET



FANCY FOOTWORK

Looking to add a few decorative touches and give your projects a signature look? Turn to Genuine Brother Accessories. Our broad variety of Specialty Feet let you step up your sewing game — in quality, creativity and extended capability. Your design possibilities are virtually endless, because Brother offers a specialty foot to enhance and simplify any effect.



SA109

1/4" Binding Foot

For attaching 1"-wide bias tape. Folds and sews tape simultaneously.

[LEARN MORE](#)



SA110

7mm Cording Foot

To attach three or fewer cords or decorative threads.

[LEARN MORE](#)



SA120

Gathering Foot

Lightly gather fabric and, at the same time, quickly and easily attach the gathered edge to a flat (ungathered) fabric.

[LEARN MORE](#)



SA141

7mm Braiding Foot

The adjustable guide on this foot offers perfectly centered hands-free placement of cords, ribbon, braiding, or tape of up to 7mm in width.

[LEARN MORE](#)



SA142

Fringe Foot

Creates dimensional thread loops on the top surface of the fabric and attaches fringe simultaneously.

[LEARN MORE](#)



SA144

5mm Clearview Foot

The Clearview Foot is used with any application where visibility of seams or pattern markings is desired for ease in embellishment.

[LEARN MORE](#)



SA145

7mm Clearview Foot

For optimum visibility while sewing.

[LEARN MORE](#)



SA146

5mm Open Toe Foot

The Open Toe Foot is used with any application where extra visibility while sewing is desired.

[LEARN MORE](#)

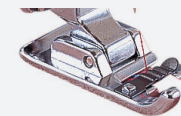


SA147

7mm Open Toe Foot

Clear plastic foot allows for sewing with complete visibility. Easy viewing of stitches, seams, and pattern markings.

[LEARN MORE](#)



SA148

5mm 3-Groove Cording Foot

Secure and apply three or fewer cording or decorative threads in one step. Allows for the insertion of cords held by a notched clip, with cords being stitched down using a serpentine zig zag or decorative stitch.

[LEARN MORE](#)



SA150

7mm Pearls and Sequins Foot

Great for adding a little glitz with sequins or pearls, as well as couching larger cords.

[LEARN MORE](#)



SA157

7mm 5-Groove Cording Foot

Used for embellishing up to 5 narrow cords. Easy threading, visibility, and includes a 7mm-wide foot.

[LEARN MORE](#)



SA158

7mm 7-Groove Cording Foot

Used for embellishing up to 7 narrow cords. Easy threading, visibility, and includes a 7mm-wide foot.

[LEARN MORE](#)



SA162

5mm Pin Tuck Foot

Sews corded pintucks on garment and home decorating projects. Secure up to 5 threads and vary pin tuck width by moving threads in grooves.

[LEARN MORE](#)



SA179

7mm Pin Tuck Foot

Sew perfectly parallel seams with our grooved pintuck foot.

[LEARN MORE](#)

DECORATIVE EMBELLISHMENT FEET



SA186

Metal Open Toe Foot
Metal Open Toe foot snaps on to provide clear visibility when creating decorative and satin stitches. Provides expanded stability and displays red markings for easy reference.

[LEARN MORE](#)



SA193

Candlewicking Foot
Add a beautiful and decorative touch that resembles handsewn 'knotted' candlewicking to embellish pillows, table linens, bed linens, and clothing, or to stitch down appliqué shapes or ribbons.

[LEARN MORE](#)



SA194

5-Groove Pin Tuck Foot
This foot is ideal when making pin tucks with slightly larger intervals, as well as for more prominent tucks on medium-weight fabrics.

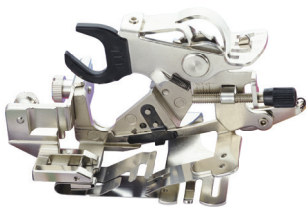
[LEARN MORE](#)



SA198

Adjustable Binder Foot
For attaching various width bias tape from 3/16" (5mm) to 3/4" (20mm).

[LEARN MORE](#)



SA565

Ruffler Foot
Creates ruffles and pleats in varying depths and fullness and can attach and create simultaneously.

[LEARN MORE](#)

NEW
FOR
2023



SA220

Spanish Hemstitch Foot
Join ribbons or strips of fabric together with decorative stitches. This foot creates a space between the pieces which creates an open, lacey look.

[LEARN MORE](#)



HOW TO

Embellish a Sunglass Case

Learn how to make your own custom sunglasses case through endless embellishment ideas!

[LEARN MORE](#)

EMBROIDERY FEET



ENHANCING YOUR EMBROIDERY

Brother's Embroidery Feet accessories were designed to enhance your embroidery experience. Ideal for darning and free motion machine quilting, as well as for intricate tasks like monogramming. Its transparent body always provides a clear view of your work.



SA197

Embroidery Foot with LED Pointer
Use the Droplight Embroidery Foot with LED Pointer to easily see your needle drop position.



SA207

Embroidery Foot with LED Pointer
Use the Droplight Embroidery Foot with LED Pointer to easily see your needle drop position.