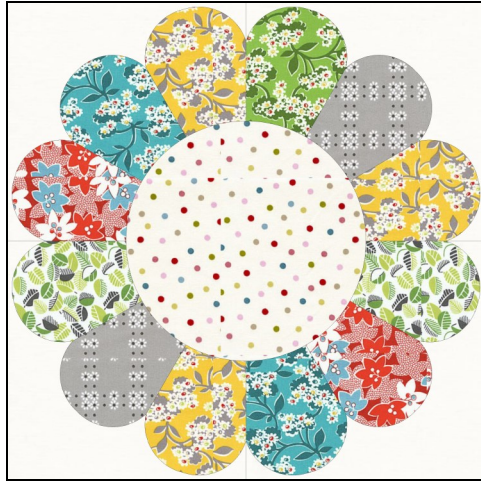


# Dresden Dreams BOM

Bev Remillard—Ladylike Designs



## Notions/Supplies

- General Sewing Supplies
- Lightweight Fusible Webbing  
(if preferred)
- Lightweight Fusible Interfacing
  - Stabilizer
- Heat Resistant Template
  - KKB Perfect Circles
- Darlene Zimmerman Dresden ruler –very helpful

Thank you for joining this online class—we are going to have fun!!

The following fabric and supply information is what you will need to prepare and finish the top of your quilt, you will need to purchase backing separately.

## Fabric Information

I'm using a line called "Mimosa" for my blocks and quilt. I am using a second line called "Fresh Cut" for the Options I will be making, i.e. pillows, table runners, toppers, etc.

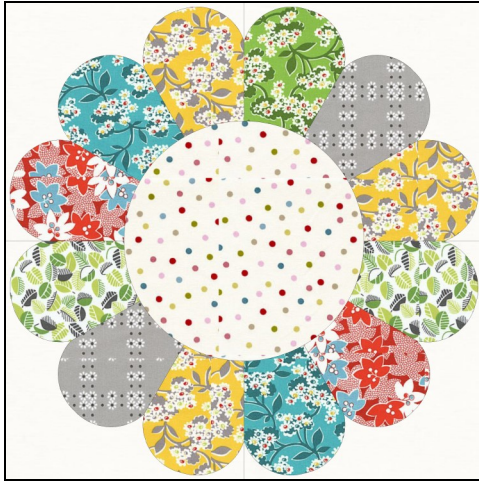
Dresden Blades (variety)	1 Layer cake or 4 Charm Packs
Background (light, White)	1 yard
Setting Background (Med/light Green)	1 yard
Sashing strips (Pale Orange)	2/3 yard
Border 1 and Binding (Colorful, Bold Print)	1 yard
Border 2 (Light Print)	1 yard
Optional: Filler Flannel (white)	1/3 yard
Backing and Batting	4-1/4 yards

**Finished Size 69 x 69**



## Dresden Dreams BOM—Queensize

Bev Remillard—Ladylike Designs



### Notions/Supplies

- General Sewing Supplies
- Lightweight Fusible Webbing (if preferred)
- Lightweight Fusible Interfacing
  - Stabilizer
- Heat Resistant Template
  - KKB Perfect Circles
- Darlene Zimmerman Dresden ruler –very helpful

Thank you for joining this online class—we are going to have fun!!

The following fabric and supply information is for Queensize version of original quilt. The fabric choices will change, but supplies/notions will be the same.

### Fabric Information

There are (18) blocks total with side triangles, sashing, etc.

Dresden Blades (variety);

**6** Charm Packs **or** (2) fat quarters of 12 choices—use 4 color groups

Background (light, White)	1-1/2 yard
Setting Background (Med/light Green)	1-3/4 yard
Sashing strips (Pale Orange)	1 yard
Border 1 and Binding (Colorful, Bold Print)	1-1/2 yards
Border 2 (Light Print)	1-3/4 yard
Optional: Filler Flannel (white)	1/2 yard
Backing and Batting	6 yards

**Finished Size 70 x 89**

