

Road Trip

Fabric Requirements for Setting

Background - 4 1/4 yards

Black Fabric - 1 7/8 yards

Binding - 1 yard

FABRIC REQUIREMENTS FOR WHOLE QUILT

Block Background - 1 yard

Block Fabric - 12 different 10" squares or
you can use a fat quarter of 6 different prints
and have two block from same print of fabric.

Block Border Fabric - 1/2 yard of two different prints
or 1 yard of one fabric

Background Fabric- 4 1/4 yards

Black Fabric - 1 7/8 yards

Binding - 1 yard

Setting Information

Road Trip

By Amber Plemones
Sew Simple Quilt Shoppe

IF using the same background for everything.

Background cut

8 - 5 1/4" strips

2 - 8 1/2" strips and sub cut into 6 - 8 1/2" squares

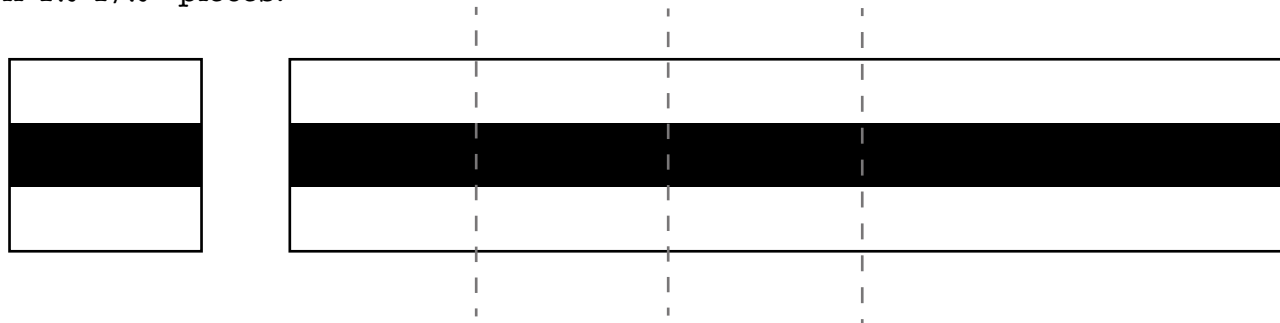
7 - 8 1/2" strips for 1st borders

9 - 3" strips. From one strip cut 2 - 3" x 5 1/4"

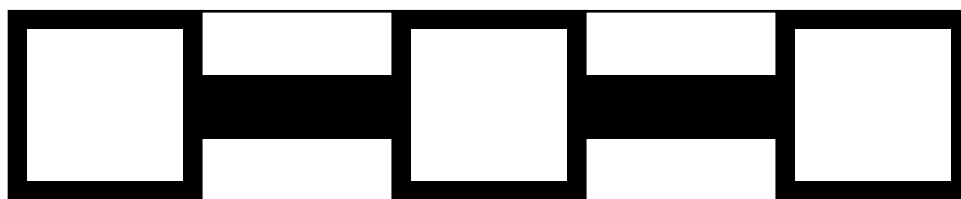
Black cut

21 - 3" strips. From one strip cut 1 - 3" x 3"

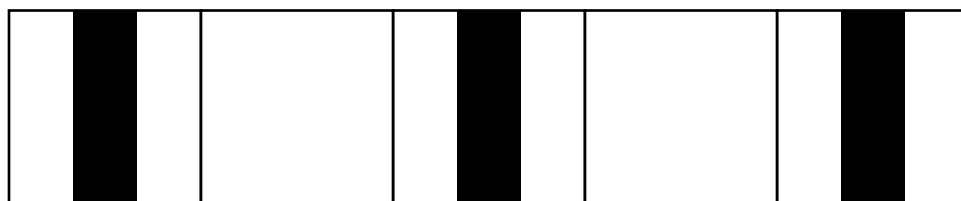
Sew two 5 1/4" strips and one 3" strip together as shown, strip set should measure 12 1/2" x 44", make 4 strip sets. Sub cut them into 8 1/2" sections. You will need 18 - 8 1/2" x 12 1/2" pieces.



Sew together in rows as shown, make 4 rows as shown.

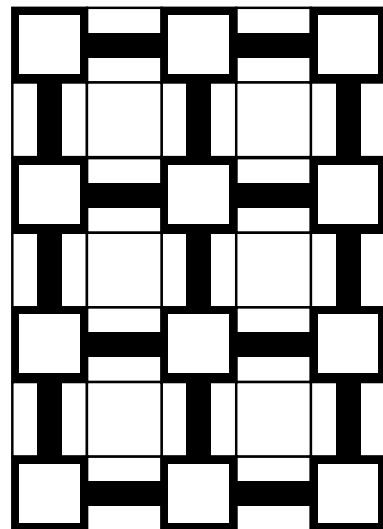


Then make three rows as shown using 8 1/2" background squares and 8 1/2" squares that you cut from strip set above.



Setting Information Continued

Sew your rows together to create the center of your quilt. After all rows have been sewn together your center will measure $52\frac{1}{2}'' \times 72\frac{1}{2}''$.

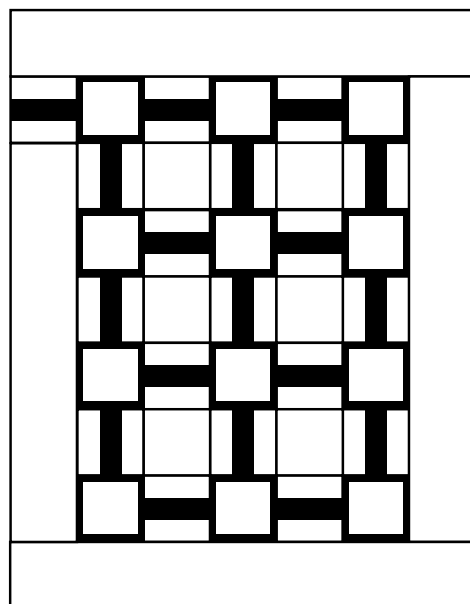


BORDERS:

1st Border:

Sew $8\frac{1}{2}''$ strips together and then cut the following pieces: 1 - $8\frac{1}{2}'' \times 60\frac{1}{2}''$ (left side border), 1 - $8\frac{1}{2}'' \times 72\frac{1}{2}''$ (right side border) and 2 - $8\frac{1}{2}'' \times 68\frac{1}{2}''$ (top and bottom border). Attach one of the above strip units from previous page to one end of the $60\frac{1}{2}''$ strip, that strip will now be $8\frac{1}{2}'' \times 72\frac{1}{2}''$. Sew side borders on then add the top and bottom.

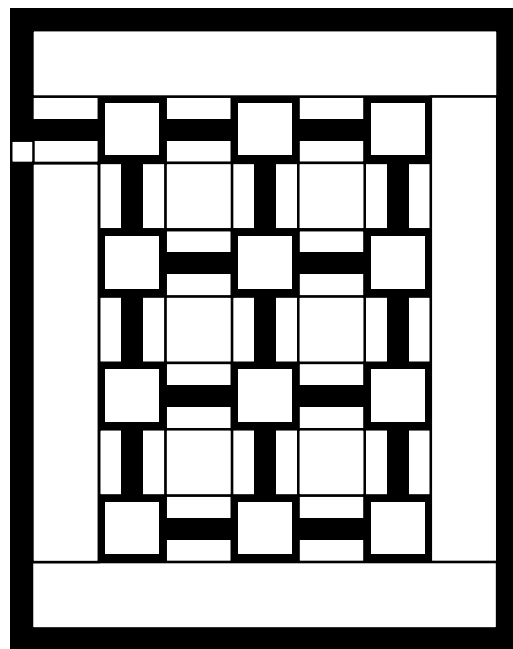
Strip Unit



Quilt will measure $68\frac{1}{2}'' \times 88\frac{1}{2}''$.

Take the 3" black border strips and sew together to make 1 - $3'' \times 88\frac{1}{2}''$ strip (right side border), 1 - $3'' \times 15\frac{3}{4}''$ (left side top piece), 1 - $3'' \times 68\frac{1}{2}''$ (left side bottom piece) and 2 - $3'' \times 73\frac{1}{2}''$ (top and bottom borders)

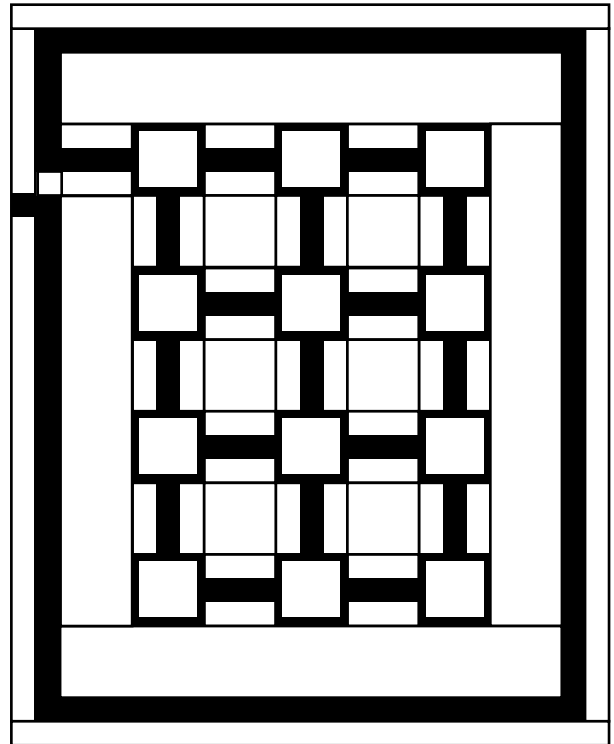
Sew the $3'' \times 15\frac{3}{4}''$ to a $3'' \times 5\frac{1}{4}''$ (background) and the $3'' \times 68\frac{1}{2}''$ strips together to create left side border. Sew side borders on first then top and bottom borders. Quilt measurement is $73\frac{1}{2}'' \times 93\frac{1}{2}''$



Take the 3" background strips and sew together to make 1 - 3" x 93 1/2" strip (right side border) , 1 - 3" x 22 1/2" (left side top piece), 1 - 3" x 69" (left side bottom piece) and 2 - 3" x 78 1/2" (top and bottom borders)

Sew the 3" x 22 1/2" a 3" x 3" (black) and the 3" x 69" strips together to create left side border. Sew side borders on first then top and bottom borders.

Quilt measurement is 78 1/2" x 98 1/2"



Yeah - last border

Take remaining black 3" strips and sew together and cut the following: 1 - 3" x 98 1/2" strip (right side border) , 1 - 3" x 73 1/2" strip (left side piece), 1 - 3" x 20 3/4" (left side piece) and 2 - 3" x 83 1/2" (top and bottom borders)

Sew the 3" x 20 3/4" to a 3" x 5.25 (background) to a 3" x 73 1/2" (3" x 98 1/2"). Sew pieced border to left and the whole strip on to right side. Sew top and bottom borders on.

Quilt will measure 83 1/2" x 103 1/2".

