



Designed By: Wendy Sheppard  
Finished Quilt Size: 40" x 48"  
Finished Block Size (In Quilt Center): 4" x 4"  
Finished Fence Block Size (Inner Border #1): 4" x 7"  
Finished Corner Block Size (Inner Border #1): 7" x 7"

Designed by: Wendy Sheppard

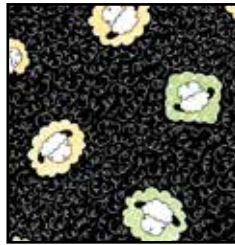




25750 H



25752 Z



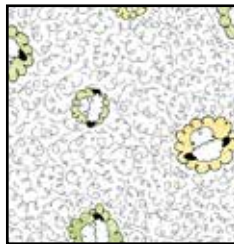
25751 J



25753 S



25754 Z



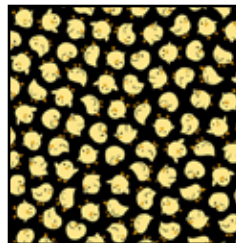
25751 Z



25750 S



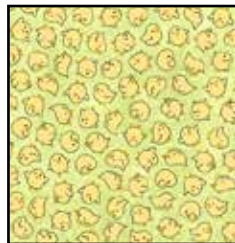
25753 H



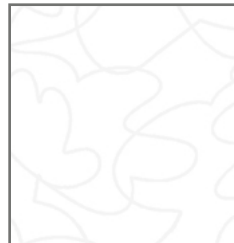
25752 J



25754 S



25752 H



23541 Z

QUILT REQUIREMENTS		
Design:	Yards	Bolts
		12 Kits
25750 H	¼	1
25752 Z	¼	1
25751 J	¼	1
25753 S	¼	1
25754 Z	¼	1
25751 Z	¾	1
25750 S	¼	1
25753 H	½	1
25752 J	¼	1
25754 S (includes binding)	¾	1
25752 H	⅜	1
23541 Z	1⅞	2
25752 Z (backing)	2½	2

### Cutting Directions

WOF = Width of Fabric

#### 1. 25750 H Green Grazing Sheep

- Cut (1) 4½" x WOF. Subcut (3) 4½" x 4½" squares for Quilt Center

#### 2. 25752 Z White Peeps

- Cut (1) 4½" x WOF. Subcut (3) 4½" x 4½" squares for Quilt Center

#### 3. 25751 J Black Sheep Heads Toss

- Cut (1) 4½" x WOF. Subcut (4) 4½" x 4½" squares for Quilt Center.

#### 4. 25753 S Light Yellow Peeps in Grass

- Cut (1) 4½" x WOF. Subcut (4) 4½" x 4½" squares for Quilt Center

#### 5. 25754 Z White Baaaa's

- Cut (1) 4½" x WOF. Subcut (4) 4½" x 4½" squares for Quilt Center

#### 6. 25751 Z White Sheep Heads Toss

- Cut (1) 4½" x WOF. Subcut (4) 4½" x 4½" squares for Quilt Center
- Cut (5) 3½" x WOF. Subcut (2) 3½" x 40½" strips. Piece remaining (3) strips and subcut (2) 3½" x 42½" strips for Outer Border.

#### 7. 25750 S Yellow Grazing Sheep

- Cut (1) 4½" x WOF. Subcut (5) 4½" x 4½" squares for Quilt Center

#### 8. 25753 H Dark Green Peeps in Grass

- Cut (1) 4½" x WOF. Subcut (4) 4½" x 4½" squares for Quilt Center
- Cut (1) 1" x WOF. Subcut (4) 1" x 1¼" rectangles, (4) 1" x 1¾" rectangles, (4) 1" x 2¾" rectangles and (4) 1" x 2¼" rectangles for Corner Blocks of Pieced Inner Border 1.
- Cut (1) 1½" x WOF. Subcut (32) 1½" x 1" rectangles for Fence Blocks of Pieced Inner Border 1.
- Cut (1) 2½" x WOF. Subcut (4) 2½" x 5½" rectangles for Horizontal Fence Blocks of Pieced Inner Border 1.
- Cut (1) 5½" x WOF. Subcut (4) 5½" x 2½" rectangles for Vertical Fence Blocks of Pieced Inner Border 1.



### 9. 25752 J Black Peeps

- Cut (1) 1½" x WOF. Subcut (24) 1½" x 1" rectangles for Fence Blocks of Pieced Inner Border 1.
- Cut (1) 2½" x WOF. Subcut (6) 2½" x 5½" rectangles for Fence Blocks of Pieced Inner Border 1.

### 10. 25754 S Dark Yellow Baaaa's

- Cut (1) 1½" x WOF. Subcut (24) 1½" x 1" rectangles for Fence Blocks of Pieced Inner Border 1.
- Cut (1) 2½" x WOF. Subcut (6) 2½" x 5½" rectangles for Fence Blocks of Pieced Inner Border 1.
- Cut (5) 2¼" x WOF. Piece together using diagonal seams at short ends to make long strip for binding. Fold lengthwise with wrong sides together and press.

### 11. 25752 H Light Green Peeps

- Cut (1) 4½" x WOF. Subcut (4) 4½" x 4½" squares for Quilt Center
- Cut (1) 1½" x WOF. Subcut (16) 1½" x 1" rectangles for Fence Blocks of Pieced Inner Border 1.
- Cut (1) 2½" x WOF. Subcut (4) 2½" x 5½" rectangles for Fence Blocks of Pieced Inner Border 1.

### 12. 23541 Z White Background

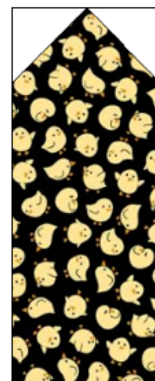
- Cut (2) 1" x WOF. Subcut (48) 1" x 1½" rectangles Fence Blocks of Pieced Inner Border 1.
- Cut (4) 1½" x WOF. Subcut (48) 1½" x 1¼" rectangles and (48) 1½" x 1½" squares for Fence Blocks of Pieced Inner Border 1.
- Cut (2) 2½" x WOF. Subcut (24) 2½" x 2½" squares for Fence Blocks of Pieced Inner Border 1.
- Cut (2) 5¼" x WOF. Subcut (48) 1½" x 5¼" rectangles for Fence Blocks of Pieced Inner Border 1.
- Cut (1) 1" x WOF. Subcut (4) 1" x 1¾" and (4) 1" x 2¼" rectangles for Corner Blocks of Pieced Inner Border 1.
- Cut (1) 1¼" x WOF. Subcut (4) 1¼" x 1¼" squares for Corner Blocks of Pieced Inner Border 1.
- Cut (1) 2¾" x WOF. Subcut (4) 2¾" x 5¼" rectangles for Corner Blocks of Pieced Inner Border 1.
- Cut (1) 5¼" x WOF. Subcut (4) 5¼" x 7½" rectangles for Corner Blocks of Pieced Inner Border 1.

### 13. 25752 Z White Peeps

- Cut (2) 46" x WOF. Sew Pieces together for backing 46" x 54" for backing.

### Constructing Fence Block (using black chick block as example)

1. Draw a diagonal line on the wrong side of 1 (1½" x 1½") white background square. Place square, right sides together, at a corner of 1 (2½" x 5½") black peeps rectangle. Sew on drawn line. Trim ¼" away from sewn line. Open and press to reveal white corner triangle. Repeat with another (1½" x 1½") white background square right next to the first white corner triangle on the same (2½" x 5½") black peeps rectangle.



Add 1 (2½" x 2½") white background square to the top of the fence post unit.

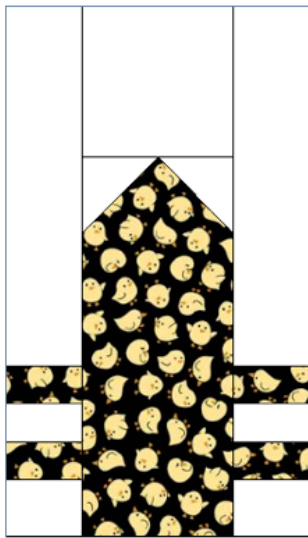


2. Arrange and sew together white background rectangles (one  $1\frac{1}{2}$ " x  $5\frac{1}{4}$ ", one  $1$ " x  $1\frac{1}{2}$ " and one  $1\frac{1}{4}$ " x  $1\frac{1}{2}$ ") and 2 ( $1$ " x  $1\frac{1}{2}$ ") black peeps rectangles to make a column.



Repeat to make 2 columns.

3. Sew columns to the opposite long sides of fence post unit to complete 1 fence block.



4. Repeat to make a total number of blocks in the following colorways:

8 blocks (dark green peeps in grass)

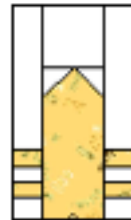


**Note:** Green grass fence posts are directional. Make 2 vertical fence posts as indicated in Step 1, above. Make 2 vertical fence posts, mirror image; (white blocks sewn to the bottom of 2 vertical fence post fabric). Make 2 horizontal fence posts with white blocks sewn on the right hand side and 2 mirror image; (white blocks sewn to the left hand side of the horizontal fence posts).

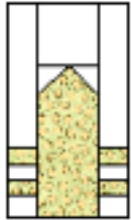
6 blocks (black peeps)



6 blocks ( dark yellow Baaaa's )

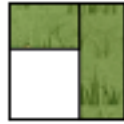


4 blocks (light green peeps)



### Constructing inner border #1 corner blocks

1. Sew 1 (1" x 1¼") dark green peeps in grass rectangle to one side of 1 (1¼" x 1¼") white square, followed by 1 (1" x 1¾") dark green peeps in grass rectangle.



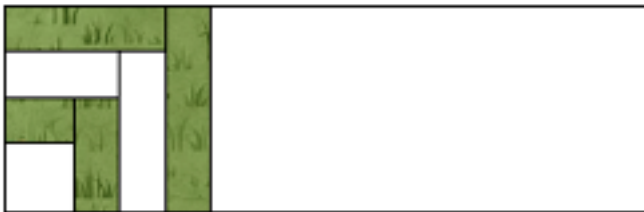
2. Add 1 (1" x 1¾"), and then, 1 (1" x 2¼") white rectangles to the sewn unit made in step 1.



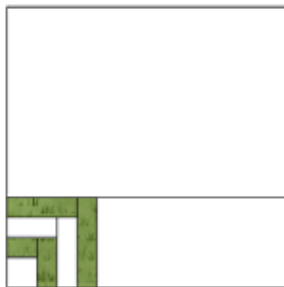
3. Add 1 (1" x 2¼"), and then, 1 (1" x 2¾") dark green peeps in grass rectangles to the sewn unit made in step 2.



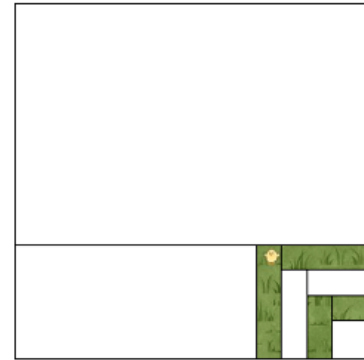
Add 1 (2¾" x 5¼") white rectangle to the right of sewn unit, as shown.



4. Add 1 (5¼" x 7½") white rectangle to the top of sewn unit made in step 3 to complete 1 block.



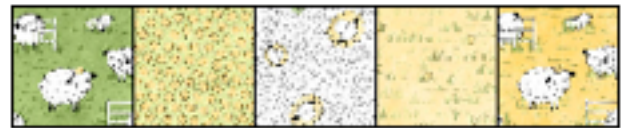
Make a total of 2 blocks, and 2 mirror-imaged blocks.



### Quilt Top Assembly

1. Quilt Center. Arrange and sew 5 (4½" x 4½") squares in appropriate prints to make a pieced row.

Row 1



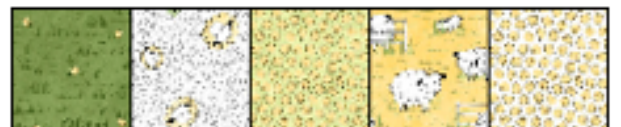
Row 2



Row 3



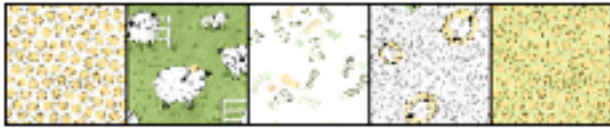
Row 4



Row 5



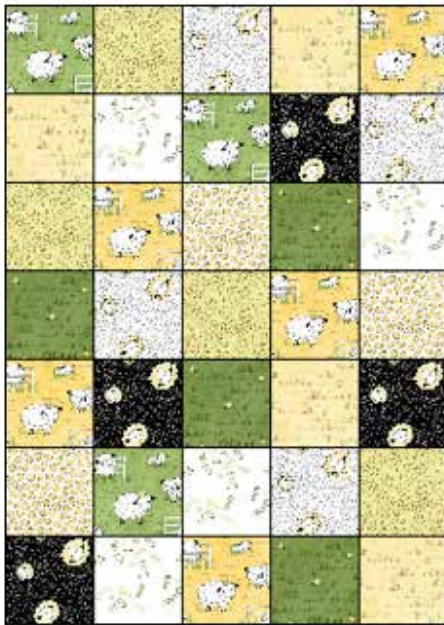
Row 6



Row 7



Sew rows together to complete quilt center.



2. Pieced inner border #1. Sew 7 pieced fence blocks into a column.



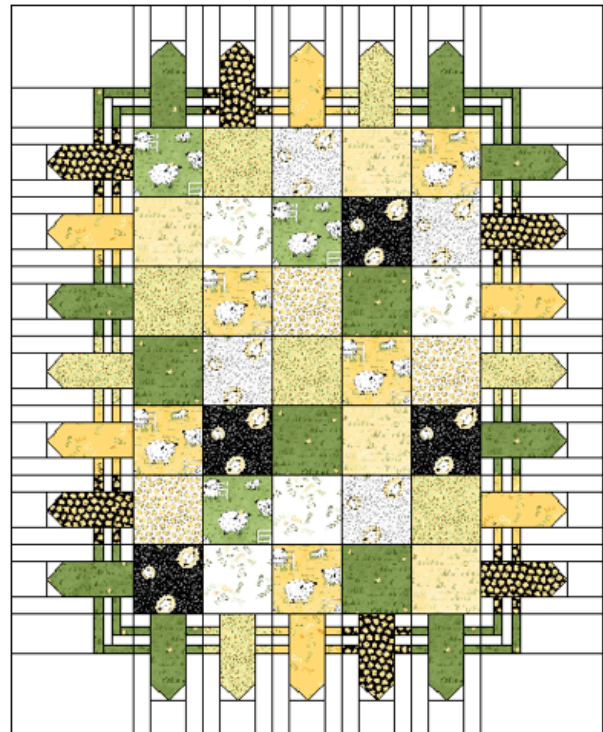
Repeat to make two columns, and sew columns to the opposite long sides of quilt center.



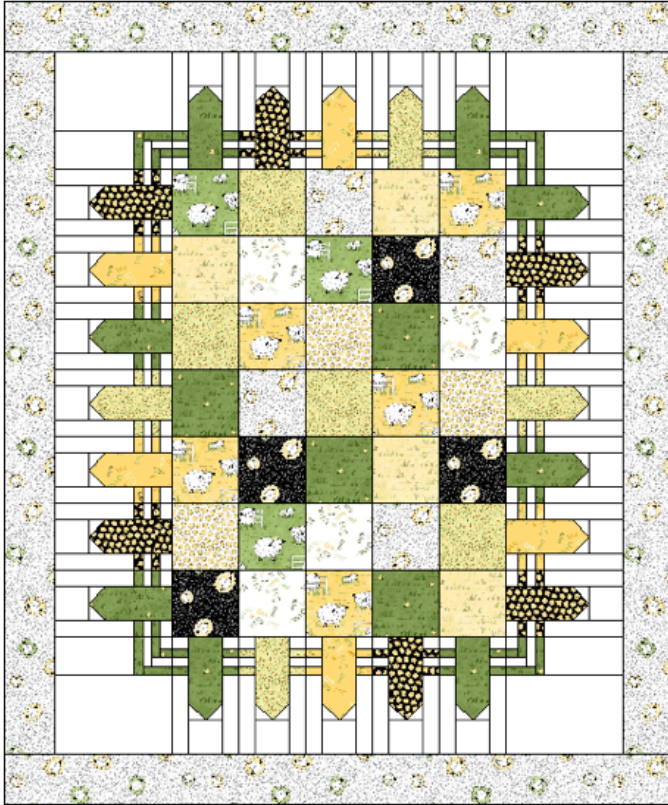
Arrange and sew together 5 fence blocks to make a row. Add 2 corner blocks to the opposite short sides of the pieced row, as shown.



Repeat to make a total of 2 pieced rows, and add to the opposite short sides of quilt center.



3. Outer border. Sew 2 (3½" x 42½") white toss sheep strips to the opposite long sides of quilt center. Sew 2 (3½" x 40½") white toss sheep strips to the remaining opposite short sides of quilt center to complete quilt top.



**Quilting Instructions:**

1. With the backing fabric laying taut, place batting and then quilt top to form quilt sandwich. Baste sandwich.
2. Quilt as desired. Trim backing even with quilt top.
3. Bind to finish quilt.