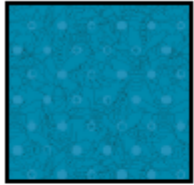


Quilt Club – Magic Circle!



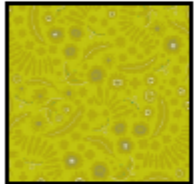
Cutting

Fabric Requirements for all 3 blocks.



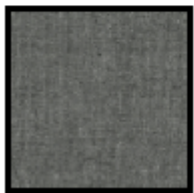
Fabric A

12 Rectangles 6 1/2" X 3 1/2"



Fabric B

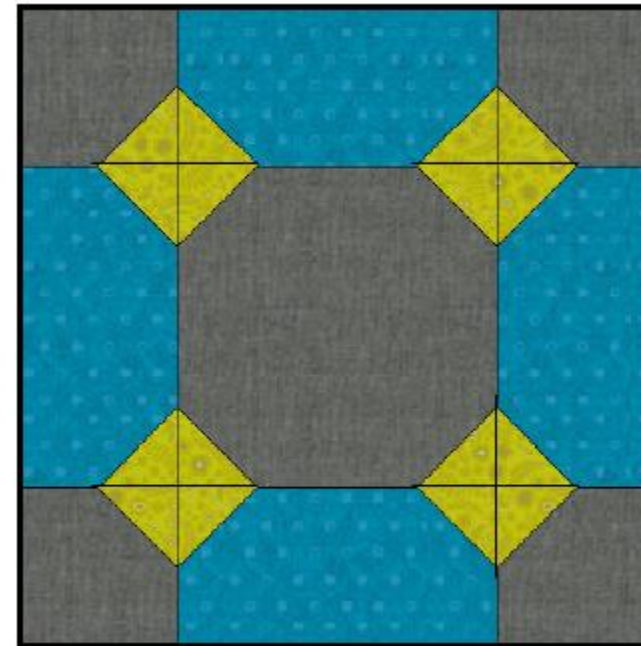
48 Squares 2 3/4"



Fabric C

3 Squares 6 1/2"

12 Squares 3 1/2"



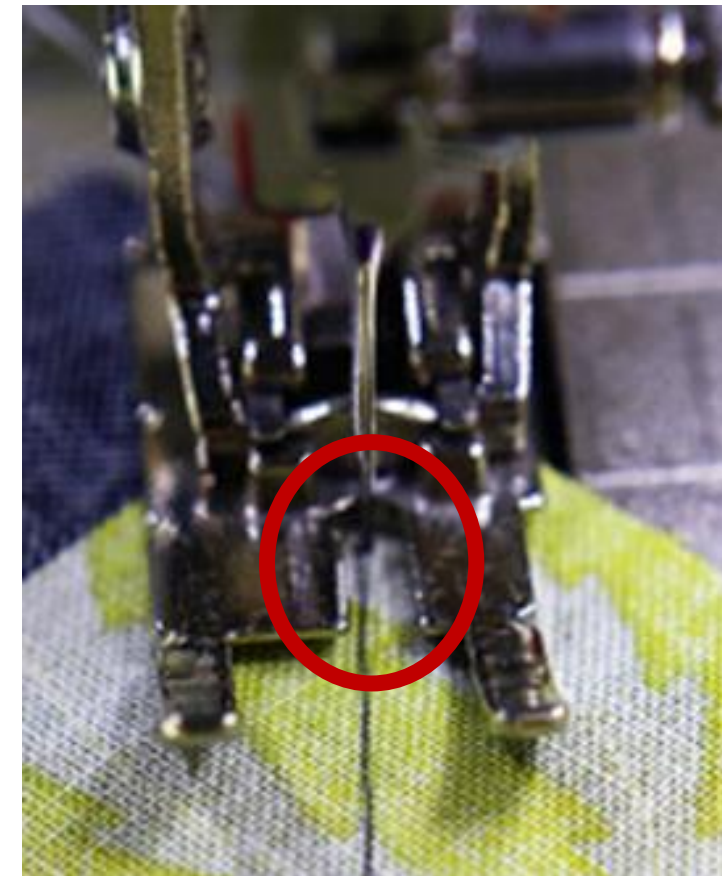
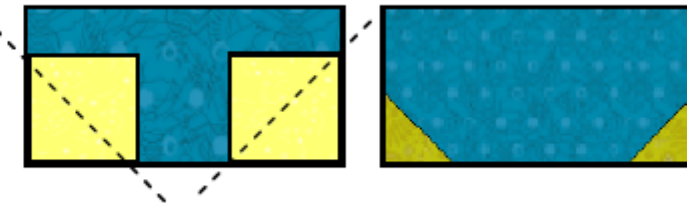
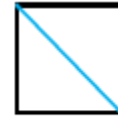
Make 3 Blocks

5"

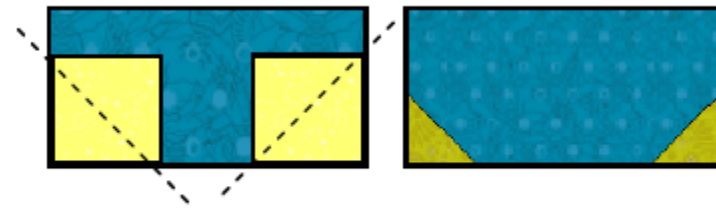
Making one Magic Circle Block.

Sew one square, press and trim... then sew the other square, press and trim.

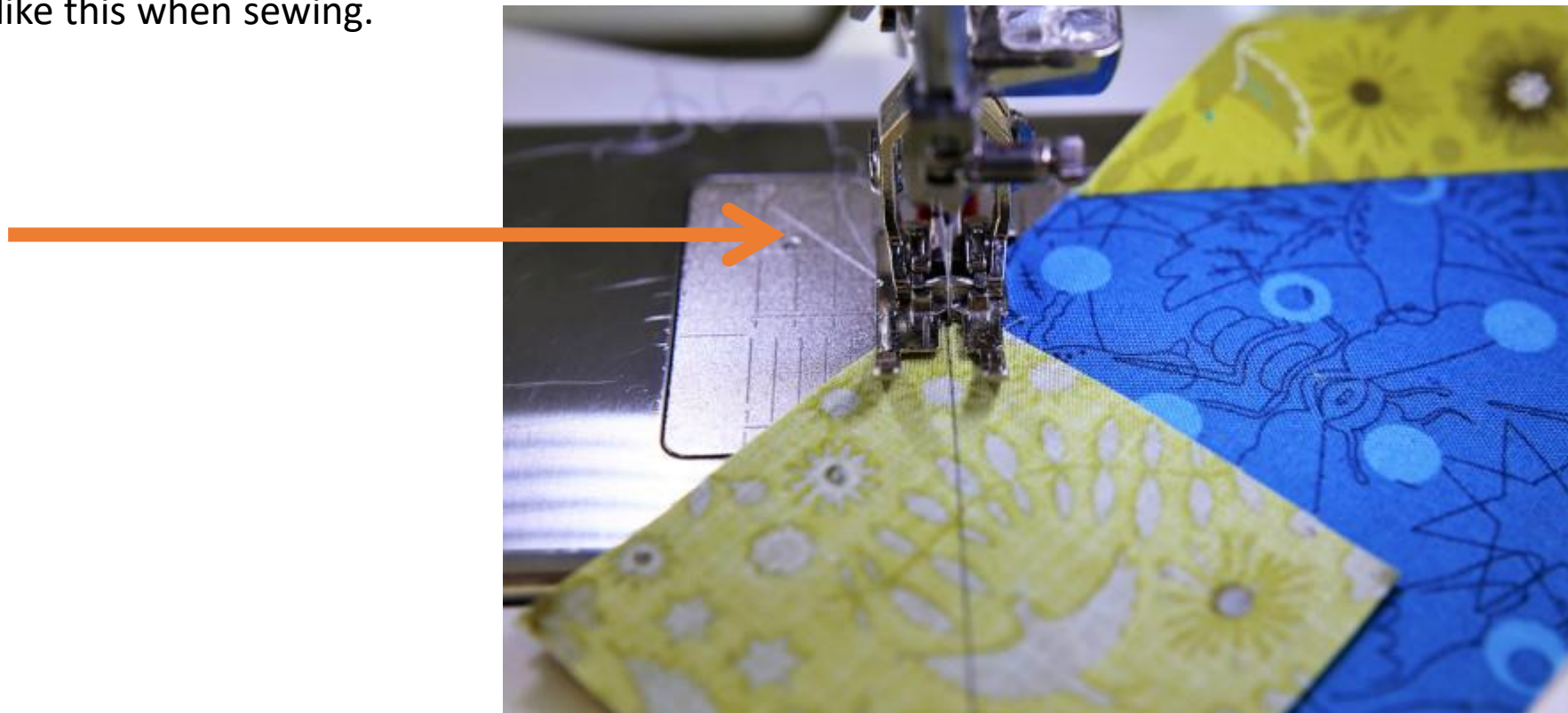
- Draw a diagonal line across each of the Fabric B squares.
- Place a Fabric B square on two corners of each Fabric A rectangle. Stitch diagonally along the marked line. Trim extra fabric to 1/4". Make 12.



- Place a Fabric B square on two corners of each Fabric A rectangle. Stitch diagonally along the marked line. Trim extra fabric to 1/4". Make 12.



One side and then the other so it would look like this when sewing.



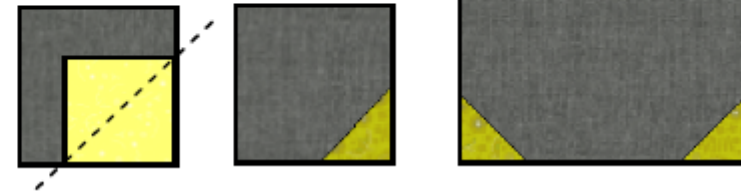


This will measure 6.5" x 3.5"

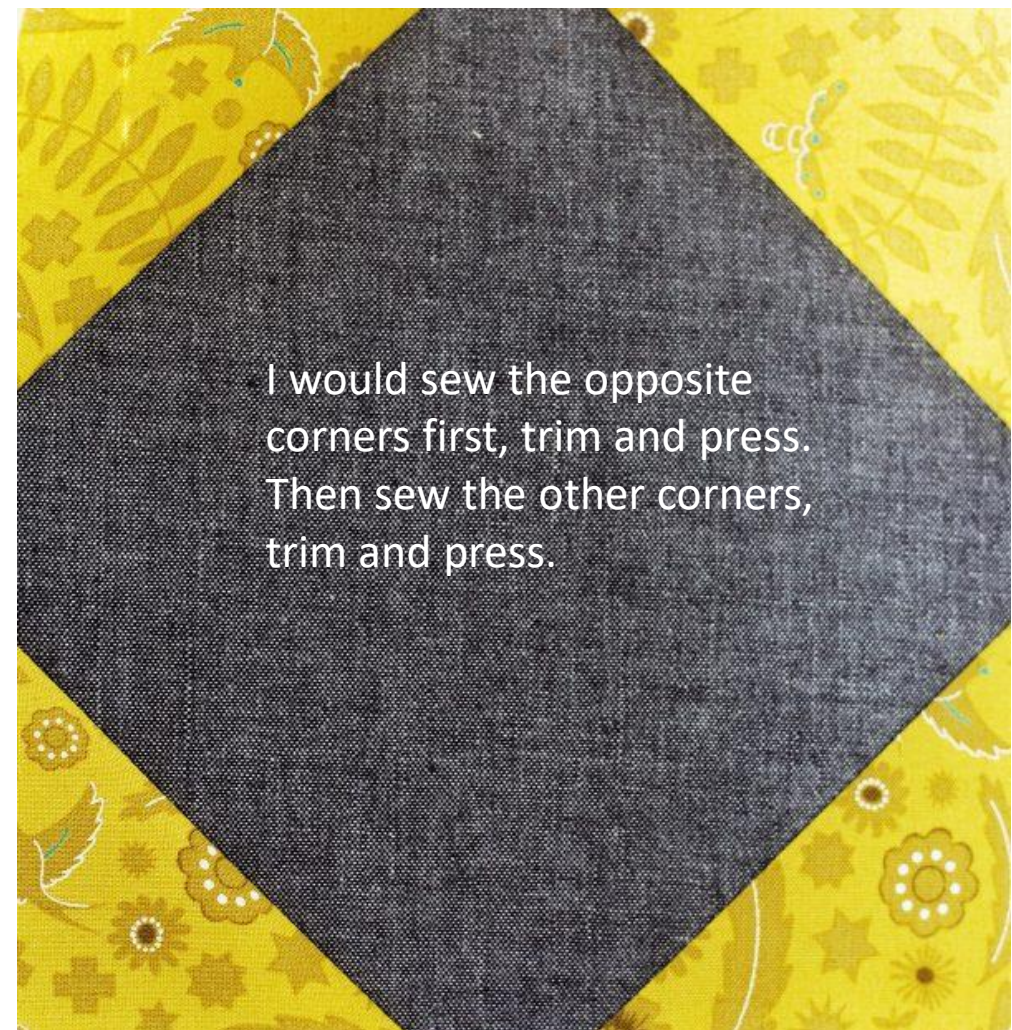
Make 12 total.

Make 4 for one block

- Place a Fabric B square on one corner of each Fabric C. Stitch diagonally along the marked line. Trim extra fabric to 1/4". Make 12.

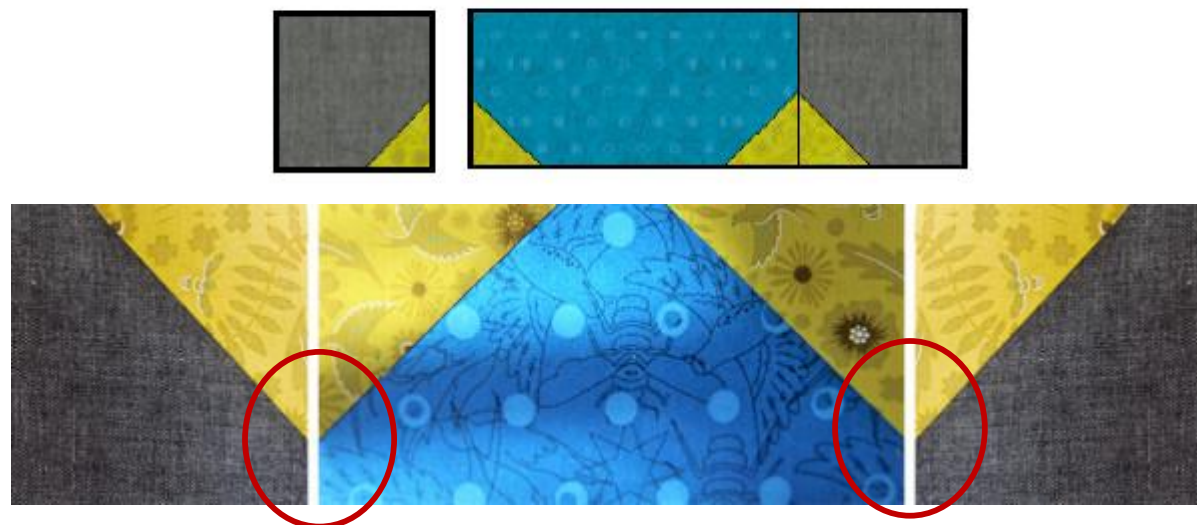


Make 12 total
Make 4 per block.



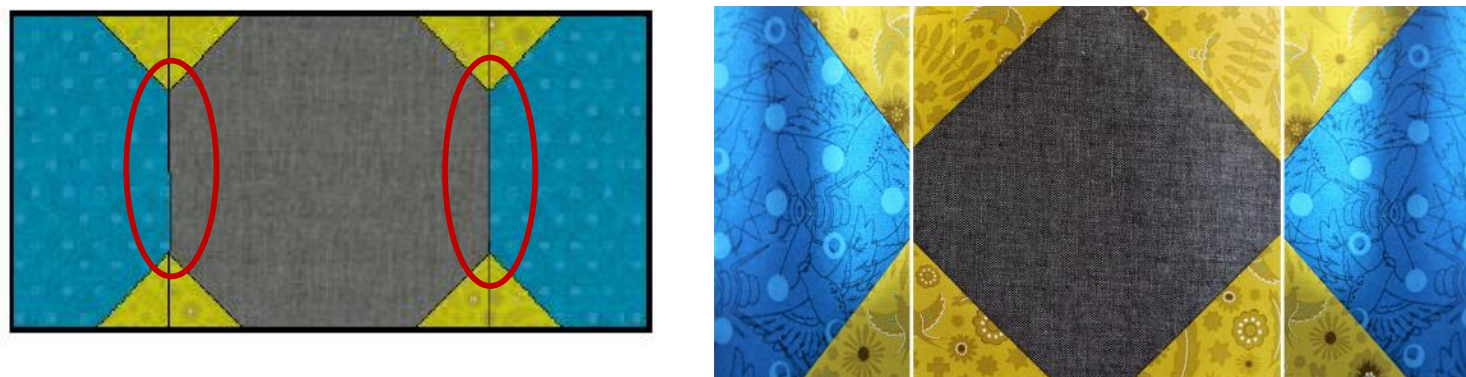
Make 3 total
Make 1 per block.

Seam together a small gray unit, a teal rectangle and another small gray unit. Make sure the green triangles are oriented in the direction as shown. Make 6. This will measure 3.5" x 12.5"



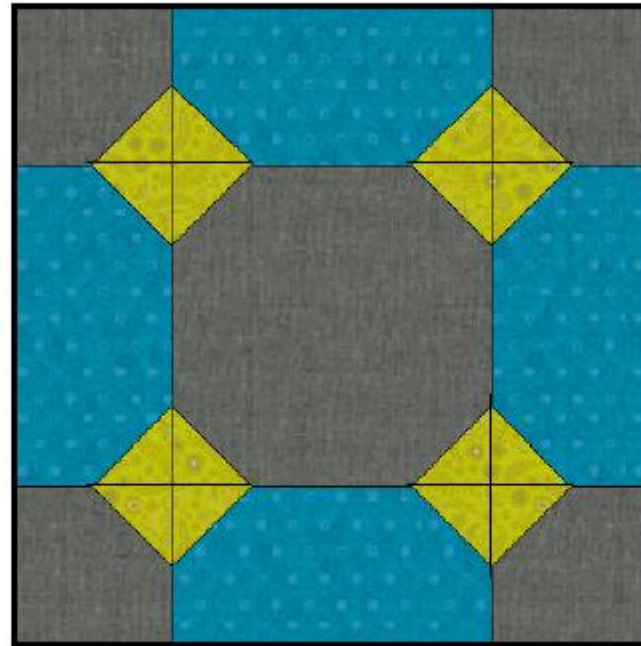
Matching Points!

Seam together a teal rectangle, a large gray square and another teal rectangle. Make sure the triangles are oriented as shown. Make 3. This will measure 6.5" x 12.5"



Matching Points!

Seam together these two units as shown. The triangles should meet to form a diamond shape.
Make 3.



Seam the three blocks together to create the 12" X 36", Magic Circle.



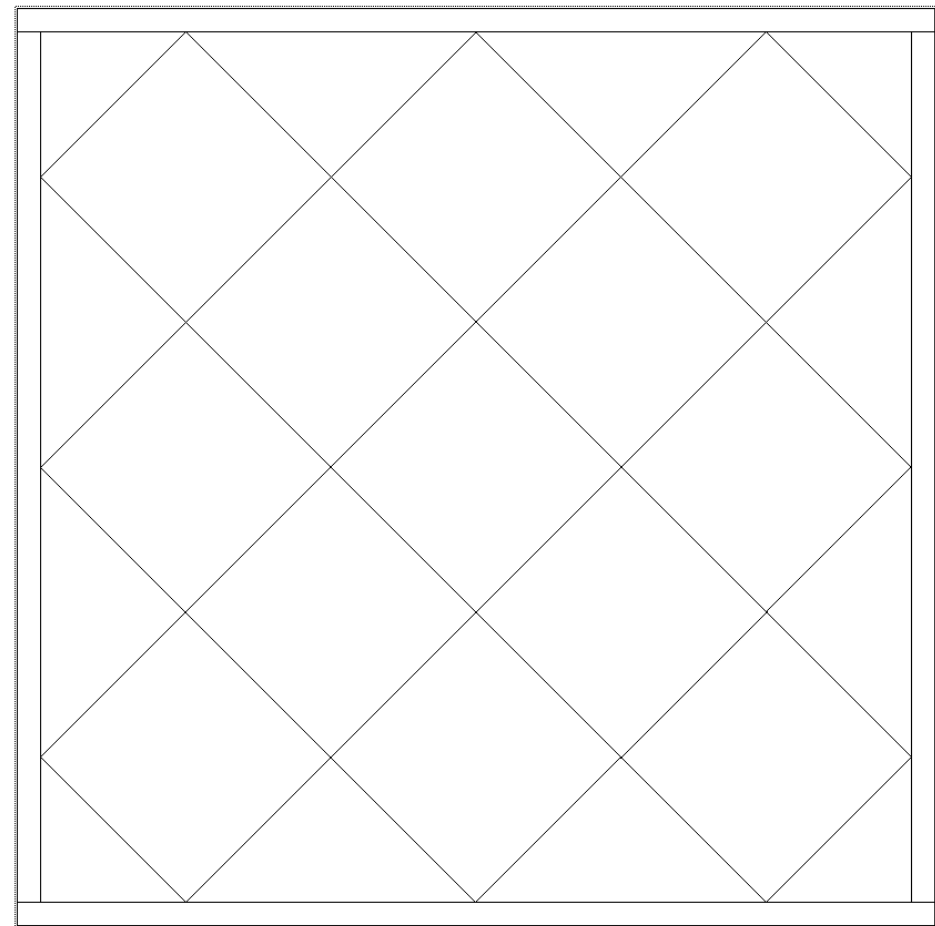
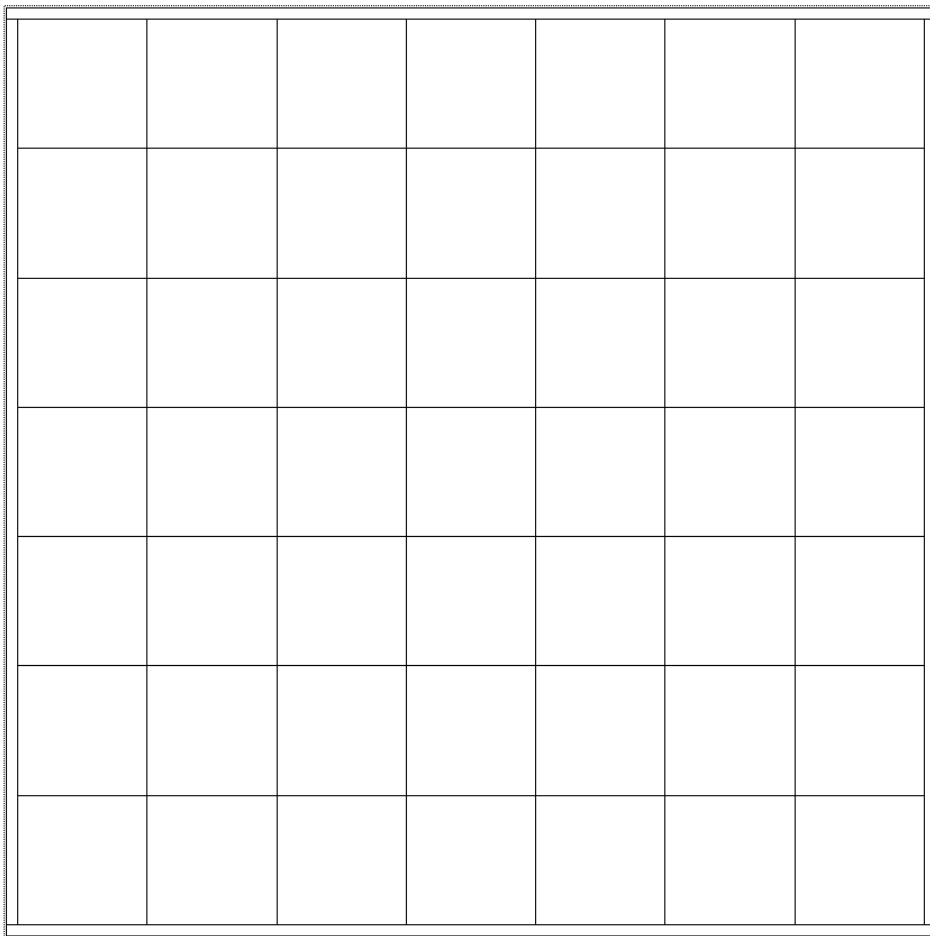
Quilting Layouts and Creating a Secondary Pattern.

Different quilting layouts.

Straight Sets – This is when the blocks are laid out in horizontal rows and vertical columns.

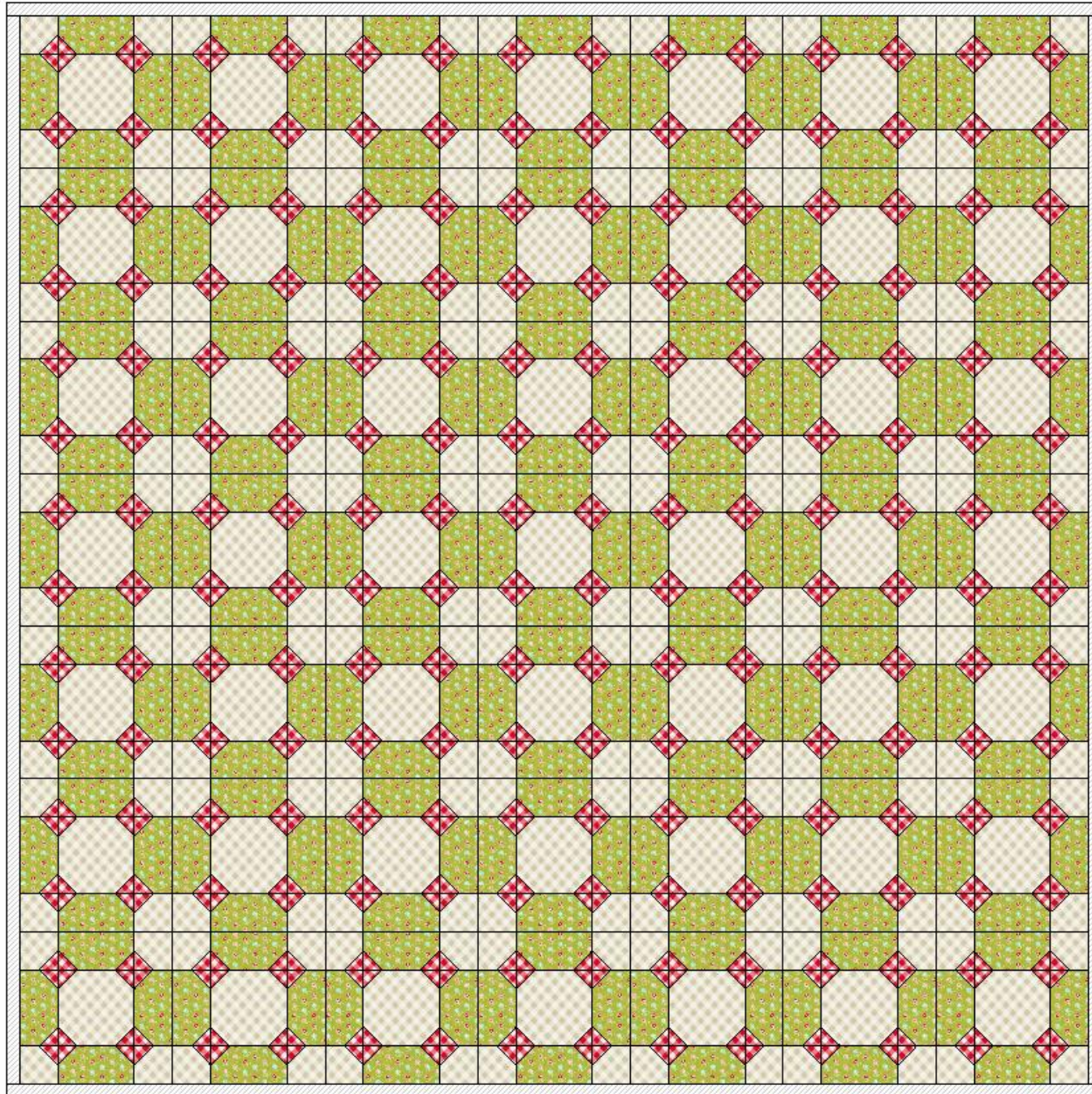
On-point – This is when the blocks are laid in diagonal rows and on the “blocks point”

Custom – That is not as straight forward... see Block Party Quilt. 😊



Straight Sets

This is created from horizontal rows of the same size quilt blocks that can be set edge to edge or with alternate blocks.



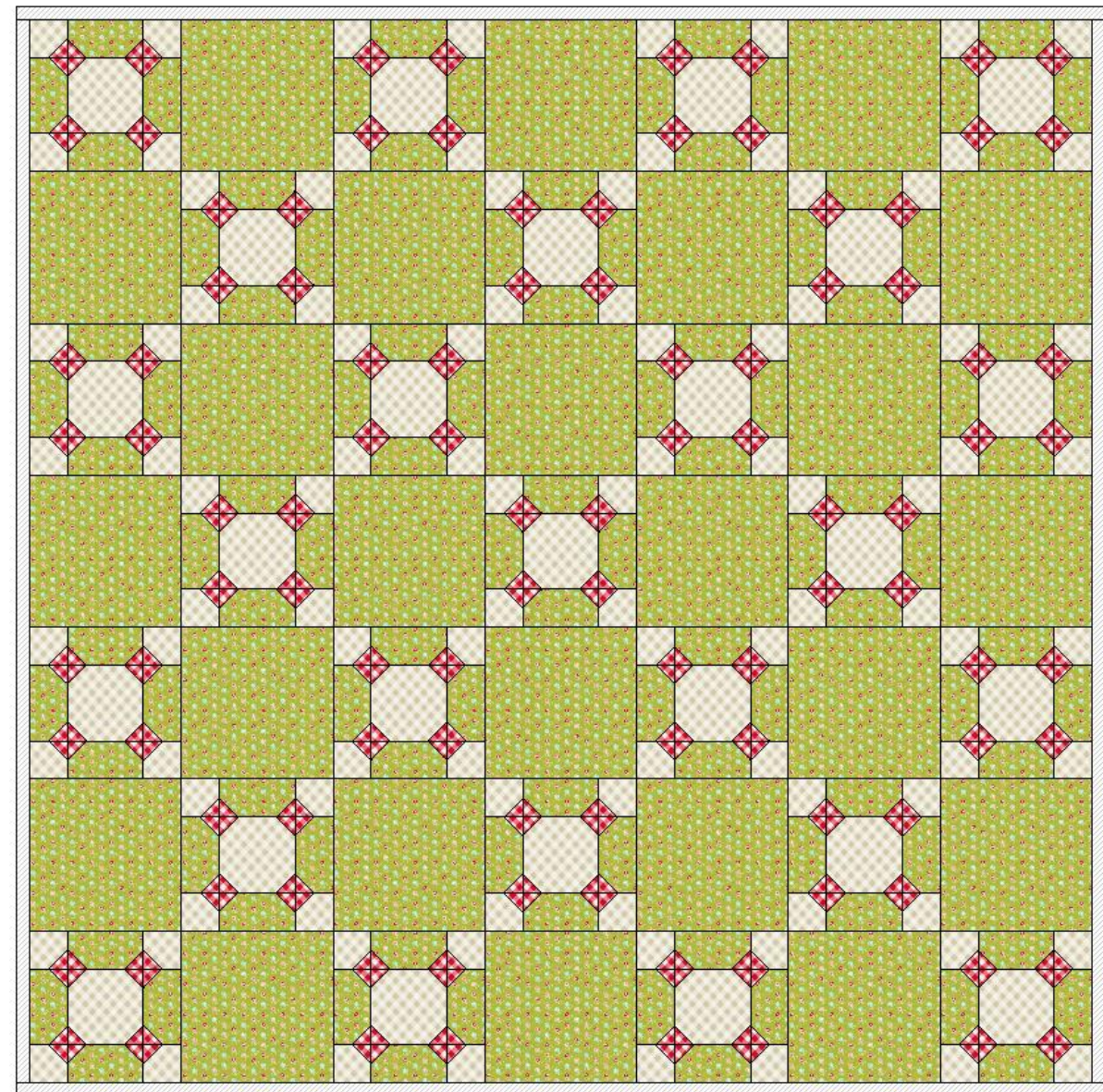
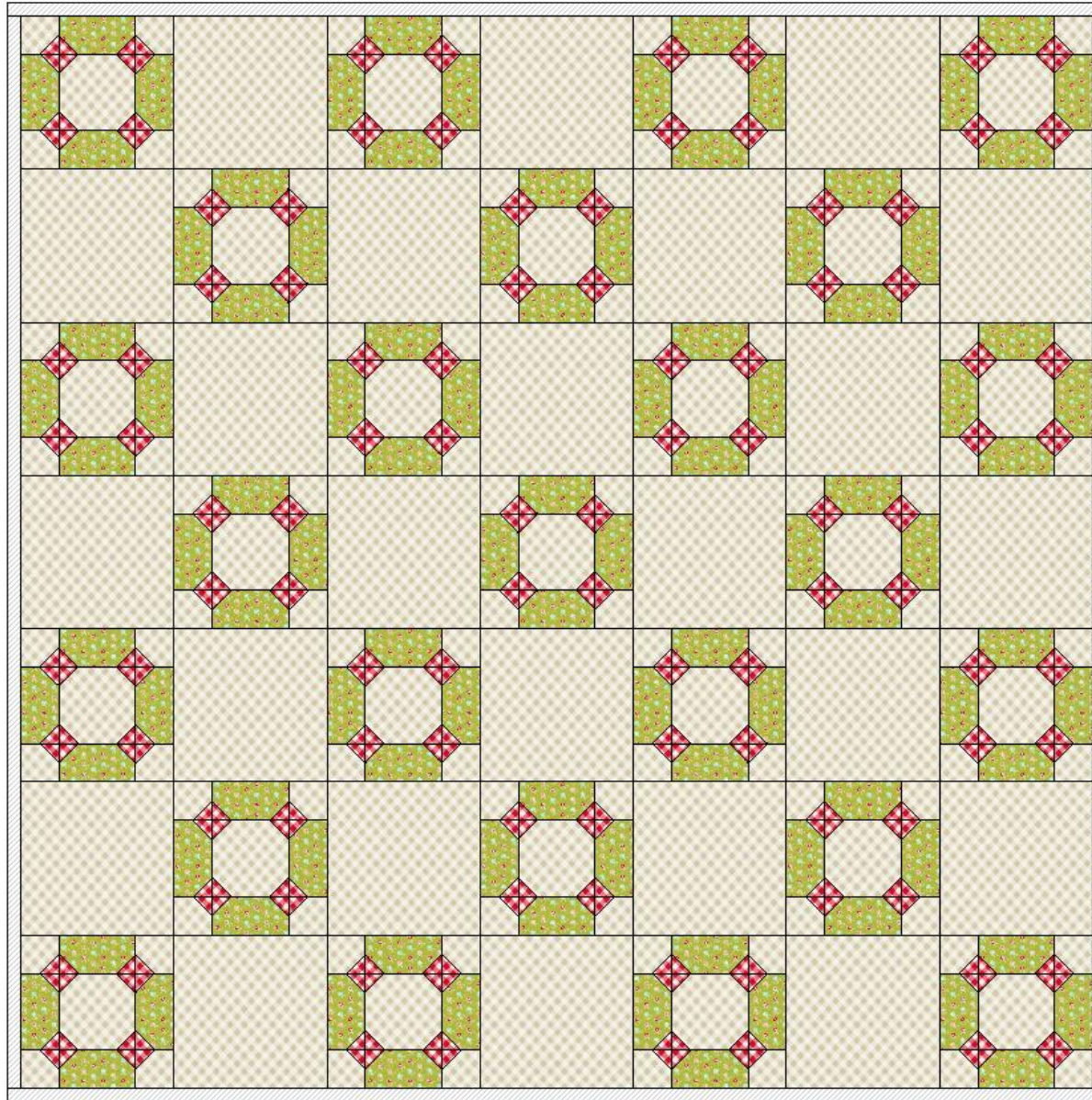
Edge to Edge Sets

Very simple. Blocks sewn one block next to the other in rows. Rows are sewn together.

This is what magic circle looks like
Edge to Edge

Alternative blocks. Every other block has a solid square between it. Only half the blocks required.

Important to remember to use an uneven number of rows



Using an alternate pieced block to create a secondary pattern.... Which is perfect for the Magic Circle Block!!!!

What to think about when selecting a block ---- Corner action! And Using the same grid! Like a 3x3 grid or a 6x6 grid.

