

PATCHWORK GIRL PANEL QUILT

Riley Blake
DESIGNS.



46 1/2" x 55 1/2"

SCARY
SCRAPS

J. Wecker Frisch



= Confident Beginner

04/01/2026

PATCHWORK GIRL PANEL QUILT

FINISHED QUILT SIZE 46 ½" × 55 ½"

Please read all instructions before beginning this project.
Yardage calculated using a 42" usable width of fabric.

Pattern designed by J. Wecker Frisch of Great Joy Studio.

GENERAL INSTRUCTIONS

Please check www.rileyblakedesigns.com/pattern-updates or scan the QR Code for any revisions before starting this project.

This pattern requires a basic knowledge of quilting techniques and terminology. The quilt diagrams portrayed are virtual images. The layout and look of your project may differ when using actual fabric. It is not recommended to prewash fabric before cutting and assembling.



Always verify your panel size before beginning. If your panel measurements differ from those given in the pattern, trim to the desired size or use coping strips to alter the size of your panel. If coping strips are needed, add oversized, coordinating strips of fabric to the necessary edges of the panel, then trim to the size specified in the pattern.

WOF = Width of Fabric
RST = Right Sides Together

FABRIC REQUIREMENTS

Fabric is from the Scary Scraps collection unless stated otherwise.

(1) PD17600-PANEL Patchwork Girl Panel

Additional Fabrics:

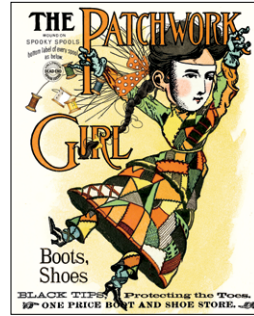
¼ yard C17603-BLACK Scary Sew Labels
1 yard C17607-WHITE Spooky Spools
½ yard C17609-BLACK Dress Dots (binding)

OTHER SUPPLIES

Basic Sewing Supplies
1 ⅝ yards WB645-BLACK Dapple Dot (wide back backing)
Batting

CUTTING INSTRUCTIONS

When cutting fabrics, use a straight edge ruler and rotary cutter. Measurements include ¼" seam allowance. Label, allocate, and organize all cuts as noted.



Patchwork Girl Panel

Fussy cut (1) 34" × 43" Panel rectangle, centered over the motif.*

*Note: If the panel motif does not reach the edge of the required cut, add coping strips first and then trim to the required size.



Black Scary Sew Labels

Cut (4) 1 ¾" × WOF strips. Piece together end-to-end; subcut:

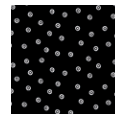
- (2) 1 ¾" × 43" strips. Label as A.
- (2) 1 ¾" × 36 ½" strips. Label as B.



White Spooky Spools

Cut (5) 5 ½" × WOF strips. Piece together end-to-end; subcut:

- (2) 5 ½" × 46 ½" strips. Label as C.
- (2) 5 ½" × 45 ½" strips. Label as D.



Black Dress Dots

Cut (6) 2 ½" × WOF strips for binding.

SEWING TECHNIQUES

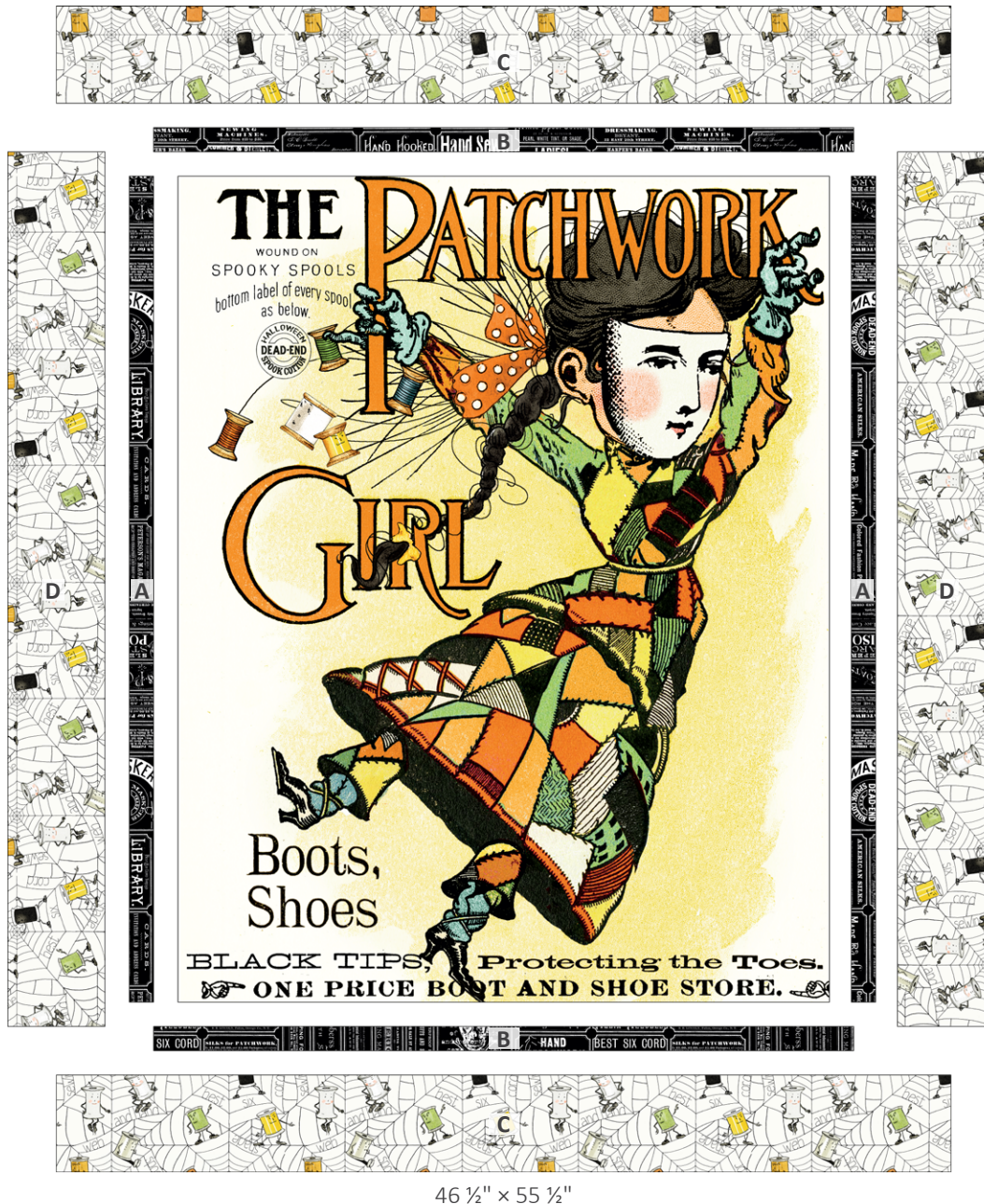
Sew all seams RST and with a ¼" seam allowance unless stated otherwise. Refer to the Quilt Layout Diagram for placement of the prints. Press seams as desired unless stated otherwise. Dimensions listed in steps are unfinished sizes.

PATCHWORK GIRL PANEL QUILT

QUILT ASSEMBLY

1. Sew (1) **A**-strip to each side of the Panel rectangle as shown below. Next, sew (1) **B**-strip to the top and bottom. In the same manner, sew **D**-strips to the sides and **C**-strips to the top and bottom to complete the quilt top.

QUILT LAYOUT DIAGRAM



46 1/2" x 55 1/2"

FINISHING INSTRUCTIONS

2. Layer the quilt top, batting, and backing. Baste the quilt layers together and quilt as desired. Sew the Black Dress Dots binding strips together end-to-end. Then bind the trimmed, finished quilt using your favorite binding method.

Enjoy and share your quilt using the hashtags: [#scaryscrapsfabric](#), [#patchworkgirlpanelquilt](#), [#rileyblakedesigns](#), and [#iloverileyblake](#).