

★ OFFICIAL ★
**RUBY STAR
SOCIETY**
PATTERN CO.

HOUSE PILLOW

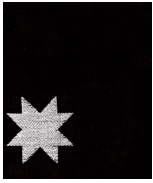
project sheet



PATTERN AND FABRIC BY **ALEXIA MARCELLE ABEGG**

CUTTING INSTRUCTIONS

Fabrics Needed



RS4155 12
1 FQ
Background



RS4159 11
1 F8



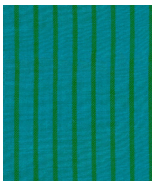
RS4154 11
1 F8



RS4128 15
1 F8



RS4128 17
1 F8



RS4123 16
1 F8

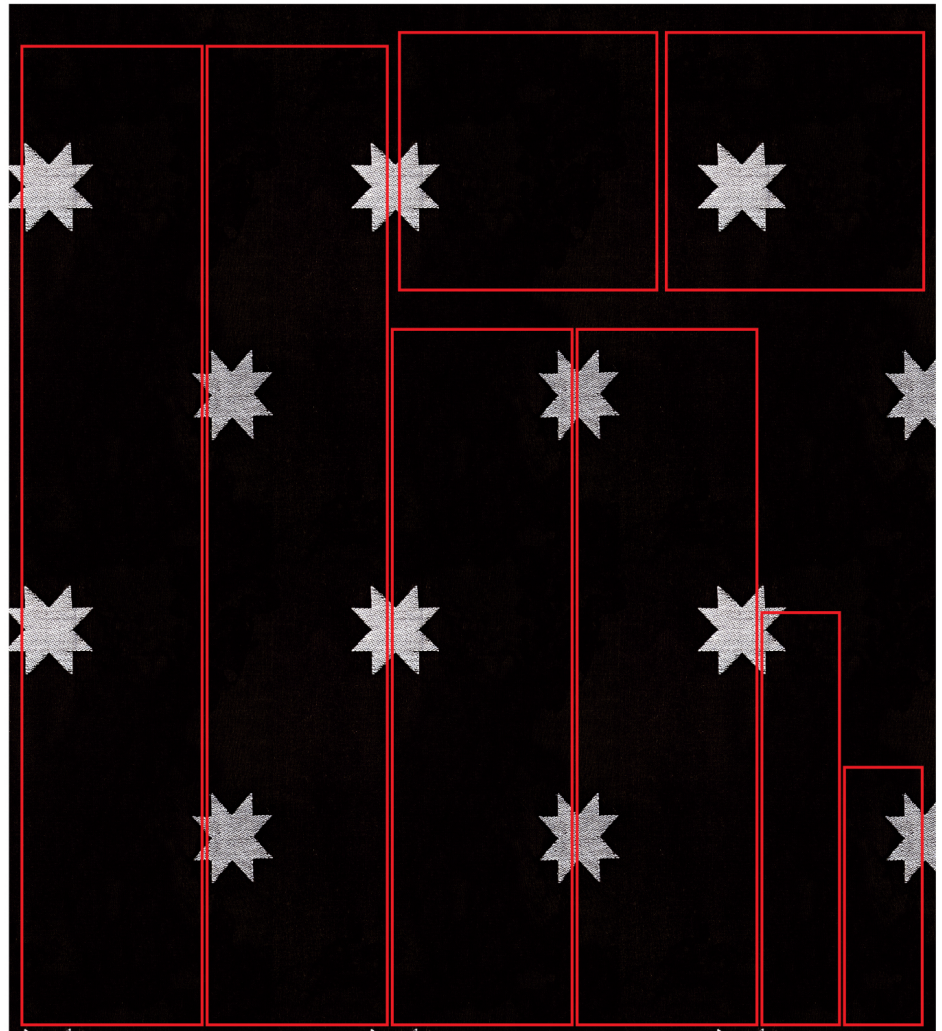


RS4164 12
½ yd
Binding



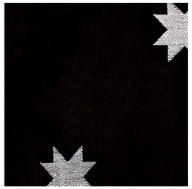
RS4164 12
¾ yd
Backing

Cutting Diagram for background fabric





Cut (2) 3 1/2" x 19 1/2"



Cut (2) 5" x 5"



Cut (2) 14" x 4 1/4"



Cut (1) 2" x 8 1/2"



Cut (1) 2" x 5"



Cut (1) 4" x 8"



Cut (1) 5" x 5"



Cut (2) 3 1/2" x 7"



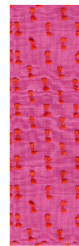
Cut (1) 2" x 2 1/2"



Cut (1) 2" x 3"



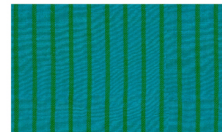
Cut (1) 2 1/2" x 3 3/4"



Cut (2) 2 1/2" x 7"



Cut (1) 2 1/2" x 3 3/4"



Cut (1) 4" x 6 1/2"



Cut (1) 2" x 1 1/2"



Cut (1) 2" x 2 1/2"

BINDING FABRIC

BACKING FABRIC

Cut (2) 17 1/2" x 19"

Cut (2) 17 1/2" x 19"

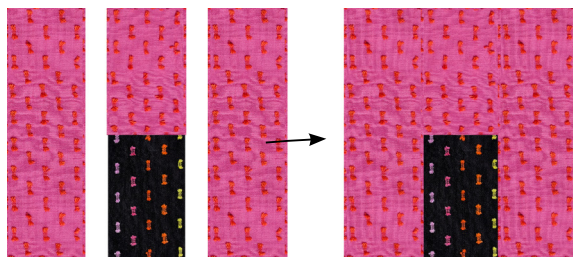
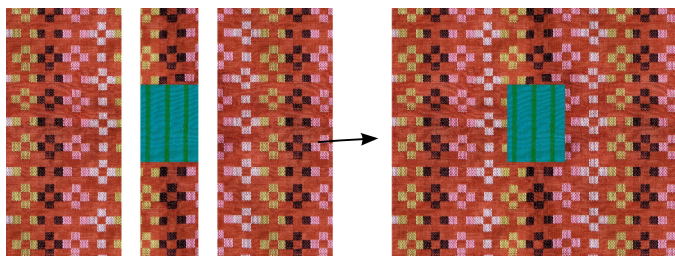
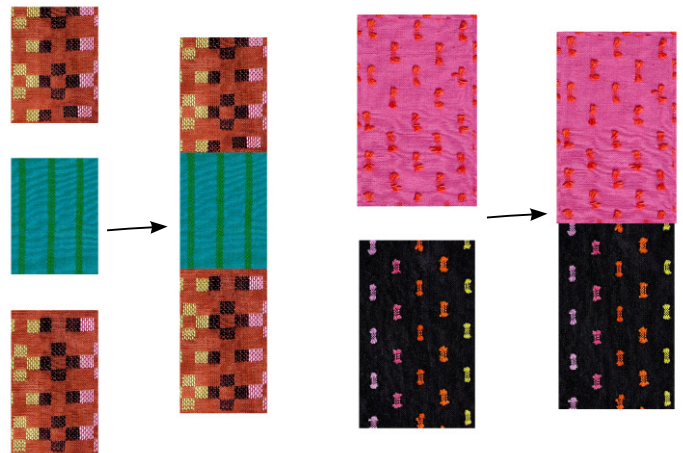
ASSEMBLING THE BLOCKS

*1/4" seam allowance used throughout unless otherwise indicated sew seams with the right side of the fabrics facing together
Press each seam open as you go*

A NOTE

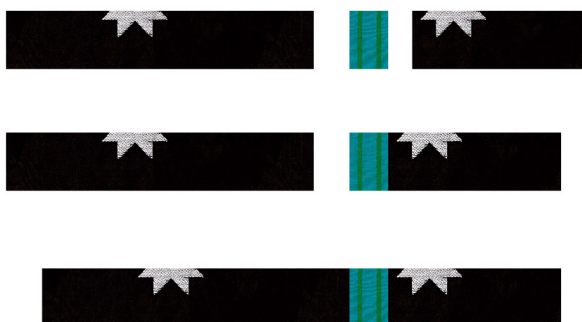
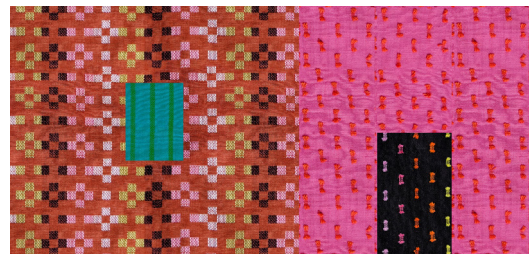
Using starch or spray starch is recommended to make sewing with the wovens a little easier. If using starch, starch your fabrics before you cut.

Sew the main parts of the house block beginning with the side of the house window section and the front door section.
Sew the shorter house fabric piece to the top of the window piece and press seams open, sew the longer house fabric piece to the bottom of the window piece and press seams open.



Sew the side of the house window section to the remaining side pieces.
Sew the front of the house door section to the remaining front of house pieces.

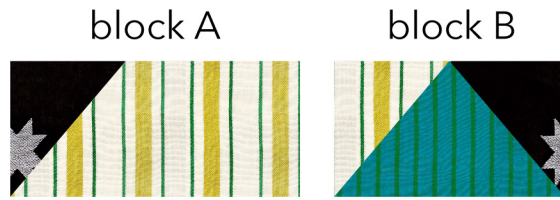
Sew the two main house sections together.



Next assemble the roof and chimney sections.

Sew the chimney section-sew the shorter background strip to the right hand side of the chimney piece. Sew the longer background strip to the left hand side of the chimney piece.

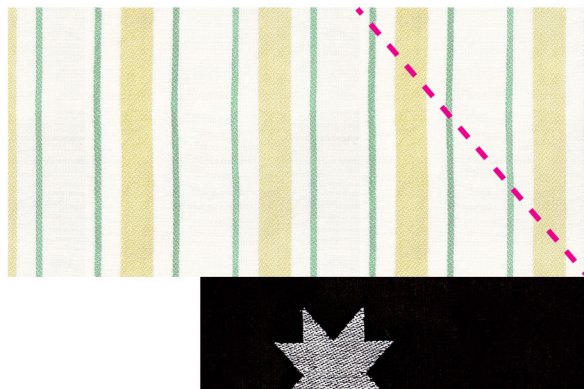
The roof section is made up of two blocks.
Begin by sewing block A.



Mark the wrong side of the roof fabric as shown.

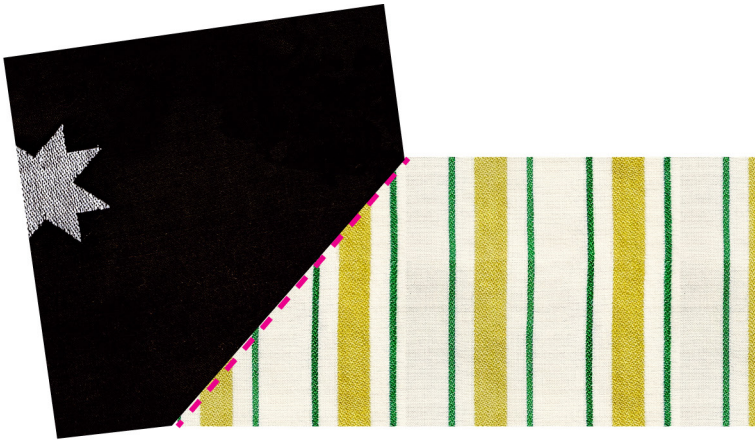


Sew one of the 5" background squares to the roof piece by sewing along the marked line. Flip over to the Right side and press the background fabric up and out along the sewn seam. Trim seam allowance to 1/4".



sew seam on marked line
align upper corner of 5" square with
upper corner of house roof piece

Square up and trim this section to 4" x 8"



press background piece up and out and trim seam allowance to 1/4"

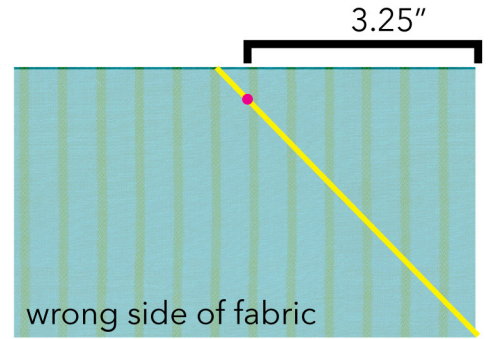
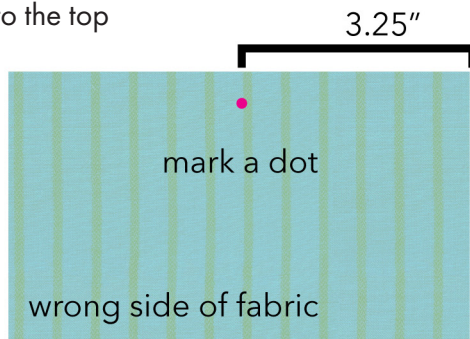
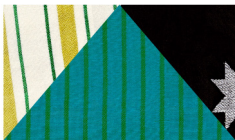


square up and trim excess background fabric to 4" x 8"

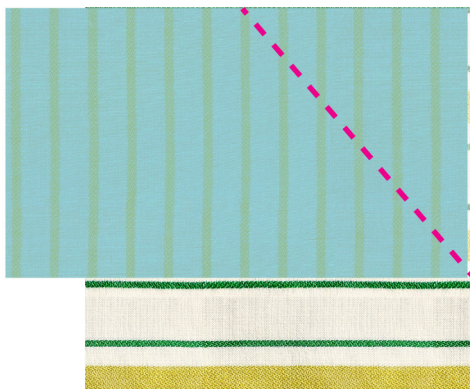
Now sew block B.

Mark the wrong side of the front roof fabric. Place a dot 3 1/4" in from the side and 1/4" down from the top as shown. Mark a stitching line from the lower corner through the dot to the top edge.

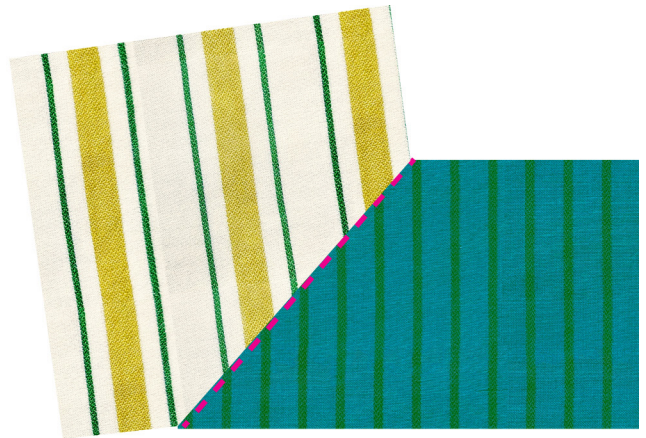
block B



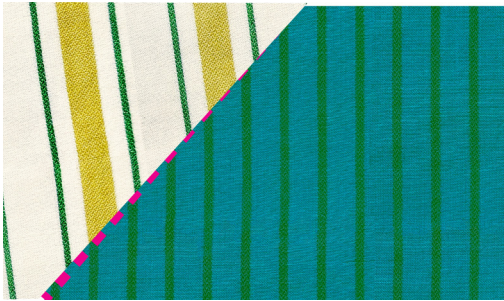
mark a diagonal stitching line



sew seam on marked line
align upper corner of 5" square
with upper corner of front roof piece

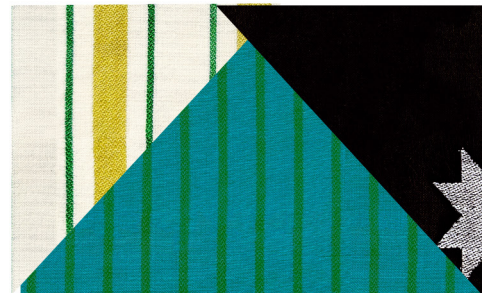
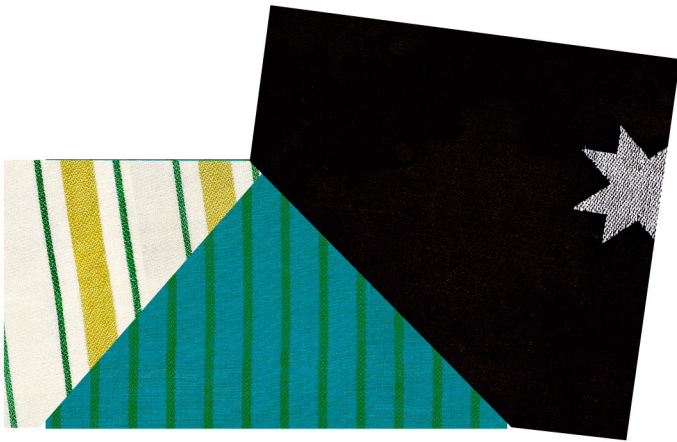


press background piece up and out and trim seam allowance to 1/4"



Square up and trim this section to 4" x 6 1/2"

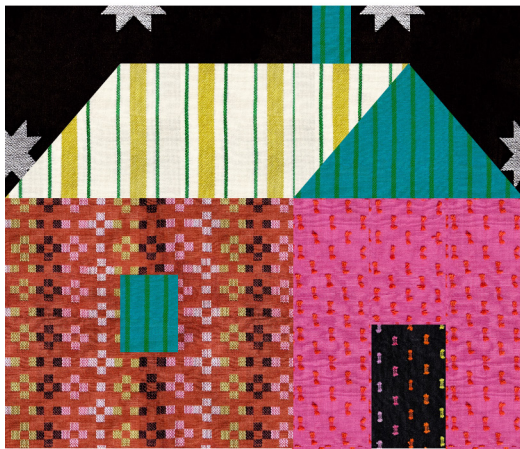
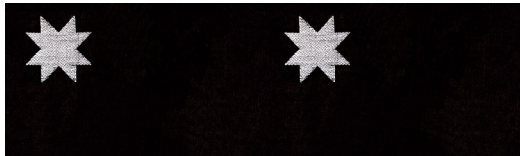
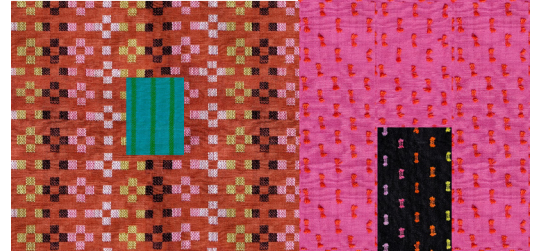
Repeat on the opposite side of the roof front piece with the remaining 5" square of background fabric.



Square up and trim this section to 4" x 6 1/2"

Sew the three house block components together starting with the chimney and the roof. Once you have all three sections sewn together it is time to add the background.

Sew the upper and lower background sections to the house block.

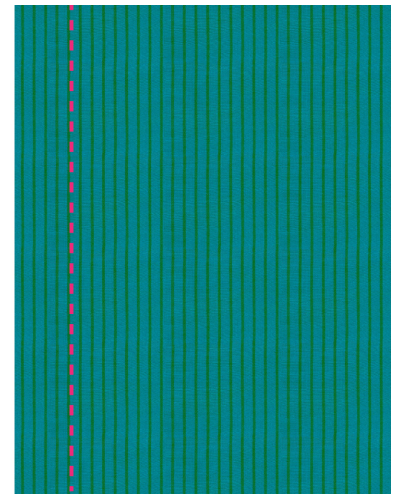
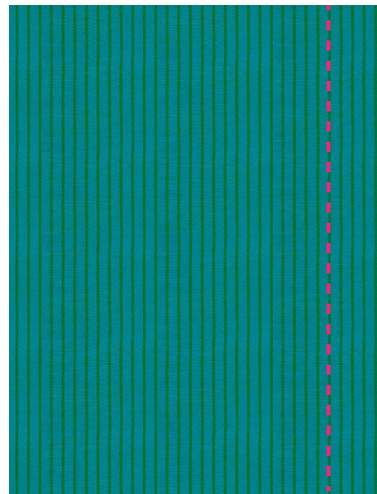


Sew the side background pieces to the right and left sides of the house block.

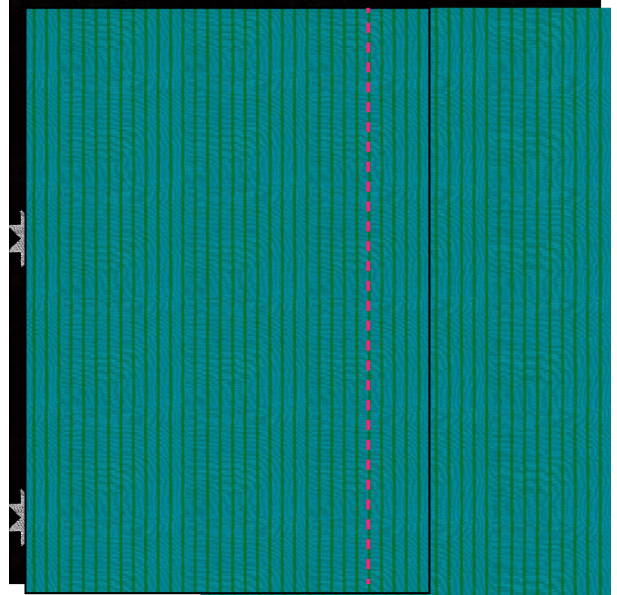


If you want to quilt your pillow front now layer the pieced front with batting and backing and quilt as desired. Trim down to 19".

Hem the pillow back rectangles. 3" Hem allowed. Hem the right side of one backing piece and the left side of the other backing piece. To hem, press 3" to the wrong side of each pillow back piece, then unfold and fold the raw edge to the pressed crease and press again. Fold this down and stitch in place.



Overlap the pillow backs to create lapped opening. Place one pillow back wrong sides together with the pillow front, aligning the outer seam allowance edges. Then place the remaining pillow back onto the wrong side of the pillow front in the same fashion. Pin in place and sew a $\frac{3}{8}$ " seamline all around the outer edges, pivot at each corner.



Cut enough $2\frac{1}{4}$ " bias strips to create 80" of binding.

Bind the pillow using a $\frac{1}{2}$ " seam allowance.

YOU DID IT! YOU MADE A HOUSE PILLOW!!

Be sure to use #rubystarsociety and #rsshousepillow when sharing your creations so we can see them!



@rubystarsociety



@alexiamarcelleabegg

HOUSE PILLOW

FABRIC REQUIREMENTS



RS4155 12
1 FQ
Background



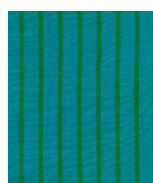
RS4128 17
1 F8



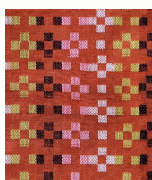
18" X 18"



RS4159 11
1 F8



RS4123 16
1 F8



RS4154 11
1 F8



RS4164 12
½ yd
Binding



RS4128 15
1 F8



RS4164 12
¾ yd
Backing

- (1) 18" pillow form
- all purpose thread
- *optional if you want to quilt the pillow front* - 5/8 yd backing fabric and 20" square batting

moda
FABRICS + SUPPLIES

★ RUBY STAR
SOCIETY ★

Copyright 2026 Ruby Star Society. Copying or otherwise redistributing is strictly prohibited. For personal use only.