

Prairie Patchwork Quilt Along

Prairie Patchwork Quilt Along

Westward Ho!

Welcome to the **Prairie Patchwork Quilt Along!**

In my book, *Prairie Patchwork*, Carrie and her family migrate westward from the hills of West Virginia to the plains of Kansas, in 1871. Join me on our own prairie journey, where our final destination is the 42" x 54" *Prairie Patchwork* sampler quilt, as pictured! To make the sampler, you will need your copy of *Prairie Patchwork* and the quantities of fabric listed on the following page.



Quilt Size: 42" x 54"

Each week you'll use the provided pdf of instructions and the instructions from my book, *Prairie Patchwork*, to make the blocks within the sampler. If you don't have the book yet, you can purchase your copy at ShopMartingale.com, my website, www.wagonswestdesigns.com (ask for a signed copy in the notes section!), as well as Amazon. The **Prairie Patchwork Quilt Along** sampler quilt also includes a pattern for a bonus block not included in *Prairie Patchwork*!

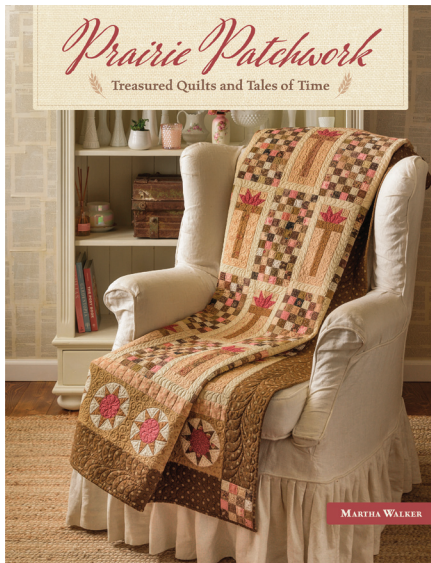
Follow along weekly on my blog, wagonswestdesigns.blogspot.com/, my facebook page, [Facebook.com/ WagonsWestDesigns/](https://www.facebook.com/WagonsWestDesigns/), or Instagram page, [Instagram.com/wagonswestdesigns/](https://www.instagram.com/wagonswestdesigns/), for each step of the journey, and the instructions for each step. The sampler quilt has been divided into 26 steps, alphabetized A through Z, so you will have plenty of time to complete the quilt! That's 26 weeks, or in other words, 6 months! A PDF for each step will be available weekly on my blog, as well as my website, www.wagonswestdesigns.com.

#prairiepatchworkquiltalong

ShopMartingale.com

© Martha Walker  For personal use only, not for distribution

Prairie Patchwork Quilt Along



My sampler quilt design was inspired by sampler quilts of the nineteenth century, and more specifically to those pictured in the book by Sue C. Cummings, *Album Quilts of Miami County*. Some of those quilts were made using a combination of red, green and cheddar. I like the palette so much that I wanted to use those colors in the **Prairie Patchwork Quilt Along** sampler.

Inspired by antique quilts that use the same palette, I designed a collection of fabrics for this sampler quilt. Those fabrics, and their corresponding numbers, can be found on the following page. They are available for purchase on the print-on-demand fabric site, [Spoonflower](http://Spoonflower.com), if you would like to use the same fabrics as I did. For easy access to my designs, go to www.wagonswestdesigns.com for a direct link to my [Spoonflower](http://Spoonflower.com) design shop.

Alternatively, you can use the fabric chart on the following page, as a guide to choosing look-a-like fabrics, either from your stash, or go shopping for something new! And, of course, feel free to change the color scheme for something completely different!

Prairie Patchwork Quilt Along

Fabric Requirements:

Yardage is based on 42"-wide fabric. Fat quarters are 18" x 21". Fat eighths are 9" x 21"

- 1 fat eighth of red #1 print (2033-24)
- ½ yard of red #2 print (2033-17)
- 1 fat eighth of red #3 print (2033-16)
- 1 fat quarter of red #4 print (2048-17)
- 1½ yards of red #5 print (2048-16)
- 1 fat eighth of red #6 print (2048-24)
- 1 fat quarter of red #7 print (2045-24)
- 1 square, 8" x 8", of red #8 stripe (2046-16)
- ⅝ yard of green #1 print (2033-23)
- ⅔ yard of green #2 print (2048-41)
- 1 fat eighth of green #3 print (2041-23)
- 1 fat eighth of green #4 print (2045-40)
- 1 fat eighth of green #5 print (2032-23)
- 1 square, 8" x 8", of green #6 print (2048-40)
- 2 yards of cream #1 print (2045-12)
- 1 fat quarter of cream #2 print (2048-47)
- ⅜ yard of cream #3 print (2029-11)
- 1 square, 8" x 8", of cream #4 print (2040-30)
- 1 square, 8" x 8", of beige print (2041-32)
- 1 square, 8" x 8", of cheddar #1 print (2032-27)
- 1 square, 5" x 5", of cheddar #2 print (2044-27)

I'd love to see your version of the Prairie Patchwork Sampler! Share your photos and progress using [#prairiepatchworkquiltalong](https://twitter.com/prairiepatchworkquiltalong)

ShopMartingale.com

© Martha Walker © For personal use only, not for distribution

Prairie Patchwork Quilt Along



2033-24
red 1



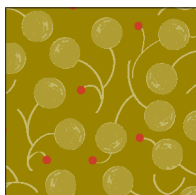
2033-23
green 1



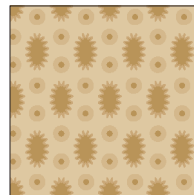
2029-11
cream 3



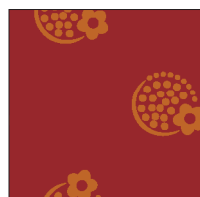
2033-17
red 2



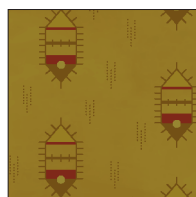
2048-41
green 2



2040-30
cream 4



2033-16
red 3



2041-23
green 3



2041-32
beige



2048-17
red 4



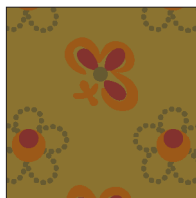
2045-40
green 4



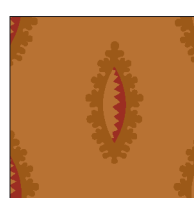
2032-27
cheddar 1



2048-16
red 5



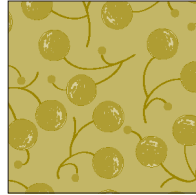
2032-23
green 5



2044-27
cheddar 2



2048-24
red 6

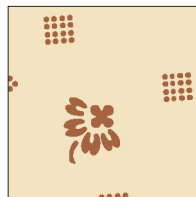


2048-40
green 6

Spoonflower is a print on demand textile company whose fabrics are digitally printed in the US or Germany using eco-friendly, water-based inks. Click on the image below to visit my Spoonflower designer page to see my designs, and where you can purchase any design printed on your choice of the fabrics which Spoonflower offers. For quilting, I recommend the Petal Signature cotton, which is a 100% medium weight cotton.



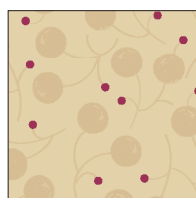
2045-24
red 7




2045-12
cream 1



2046-16
red 8



2048-47
cream 2

 [Visit My Spoonflower Shop](#)