

# Sentimental Stitches

Wagons West  
Designs



Fabric Design by Martha Walker

A Free Project Sheet From

 **Henry Glass & Co., Inc.**



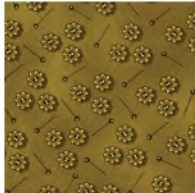
[facebook](#)

Finished Quilt Size: 56" x 56"  
49 West 37th Street, New York, NY 10018  
tel: 212-686-5194 fax: 212-532-3525  
Toll Free: 800-294-9495  
[www.henryglassfabrics.com](http://www.henryglassfabrics.com)

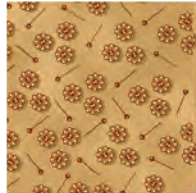
# SENTIMENTAL STITCHES

Finished Quilt Size: 56" x 56"

## Fabrics in the Collection



Tonal Button Flowers  
Green  
9744-66



Tonal Button Flowers  
Tan  
9744-44



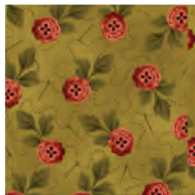
Strawberry Foulard  
Red  
9743-88



Strawberry Foulard  
Brown  
9743-33



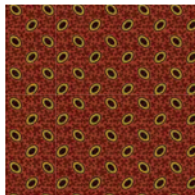
Multi Button Flowers  
Red  
9742-88



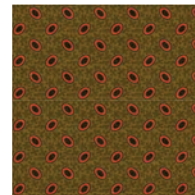
Multi Button Flowers  
Green  
9742-66



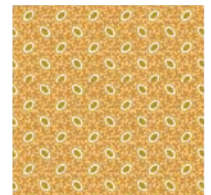
Multi Button Flowers  
Tan  
9742-44



Textured Ovals  
Red  
9741-88



Textured Ovals  
Green  
9741-66



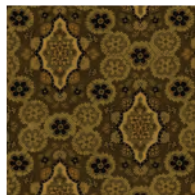
Textured Ovals  
Tan  
9741-44



Medallion  
Wine  
9740-89



Medallion  
Red  
9740-88



Medallion  
Green  
9740-66



Lace Floral  
Red  
9739-88



Lace Floral  
Green  
9739-66



Lace Floral  
Gold  
9739-44



Floral Stripe  
Red  
9738-88



Floral Stripe  
Green  
9738-66

## Materials

### Red Colorway

1 ¼ yards	Floral Stripe - Red	9738-88
1 ¼ yards	Strawberry Foulard - Brown (Binding)	9743-33
½ yard	Multi Button Flowers - Green	9742-66
¾ yard	Lace Floral - Red	9739-88
⅝ yard	Lace Floral - Green	9739-66
¼ yard	Medallion - Green	9740-66
⅓ yard	Tonal Button Flowers - Green	9744-66
⅛ yard	Textured Ovals - Green	9741-66
½ yard	Lace Floral - Gold	9739-44
¼ yard	Multi Button Flowers - Tan	9742-44
¼ yard	Tonal Button Flowers - Tan	9744-44
¼ yard	Textured Ovals - Tan	9741-44
¼ yard	Medallion - Red	9740-88
¼ yard	Textured Ovals - Red	9741-88
¼ yard	Multi Button Flowers - Red	9742-88
¼ yard	Strawberry Foulard - Red	9743-88
¼ yard	Medallion - Wine	9740-89
3 ¾ yards	Multi Button Flowers - Tan (Backing)	9742-44

### Green Colorway

1 ¼ yards	Floral Stripe - Green	9738-66
1 ¼ yards	Strawberry Foulard - Brown (Binding)	9743-33
½ yard	Multi Button Flowers - Red	9742-88
¾ yard	Lace Floral - Green	9739-66
⅝ yard	Lace Floral - Red	9739-88
¼ yard	Medallion - Red	9740-88
⅓ yard	Strawberry Foulard - Red	9743-88
⅛ yard	Textured Ovals - Red	9741-88
¼ yard	Lace Floral - Gold	9739-44
¼ yard	Multi Button Flowers - Tan	9742-44
¾ yard	Tonal Button Flowers - Tan	9744-44
¼ yard	Textured Ovals - Tan	9741-44
¼ yard	Medallion - Green	9740-66
¼ yard	Textured Ovals - Green	9741-66
¼ yard	Multi Button Flowers - Green	9742-66
¼ yard	Tonal Button Flowers - Green	9744-66
3 ¾ yards	Multi Button Flowers - Tan (Backing)	9742-44

## Cutting Instructions

Please note: all strips are cut across the width of fabric (WOF) from selvage to selvage edge unless otherwise noted as length of fabric (LOF).

### From the Floral Stripe - Red/Floral Stripe - Green (A), cut:

- (4) 8" x 41 ½" strips from the length of fabric (LOF).

### From the Strawberry Foulard - Brown (B), cut:

- (2) 2 ¾" x 30" strips.
- (2) 2 ¾" x 34 ½" strips.
- (2) 2" x 38 ½" strips.
- (2) 2" x 41 ½" strips.
- (1) 5 ⅞" x width of fabric (WOF) strips. Sub-cut the strips into (4) 5 ⅞" squares and (4) 4" squares. Cut all the squares across both diagonals to make (16) Fabric B large triangles and (16) Fabric B small triangles.
- (6) 2 ½" x WOF strips for the binding.

### From the Multi Button Flowers - Green/Multi Button Flowers - Red (C), cut:

- (1) 5 ¼" x WOF strip. Sub-cut the strip into (4) 5 ¼" squares. Cut the squares across both diagonals to make (16) Fabric C triangles.
- (1) 2 ½" x WOF strip. Sub-cut the strip into (16) 2 ½" squares.

### From the Lace Floral - Red/Lace Floral - Green (D), cut:

- (1) 3 ¼" x WOF strip. Sub-cut the strip into (4) 3 ¼" squares.
- (2) 6 ½" x WOF strips. Sub-cut the strips into (36) 1 ½" x 6 ½" strips.
- See instructions to cut (2) appliques.

### From the Lace Floral - Green/Floral Lace - Red (E), cut:

#### Red Color Way

- (1) 2 ½" x WOF strip. Sub-cut the strip into (8) 2 ½" squares.

#### Green Color way

- (1) 2 ½" x WOF strip. Sub-cut the strip into (8) 2 ½" squares.
- (1) 7 ¼" x WOF strip. Sub-cut the strip into (1) 7 ¼" square and (4) 6 ⅞" squares. Cut the 7 ¼" square across both diagonals to make (4) Fabric E small triangles. Cut the 6 ⅞" squares across (1) diagonal to make (8) Fabric E large triangles.

### From the Medallion - Green/Medallion - Red (F), cut:

- (2) 2 ½" x WOF strip. Sub-cut the strip into (24) 2 ½" squares.

### From the Tonal Button Flowers - Green/Strawberry Foulard - Red (G), cut:

- (2) 2 ½" x WOF strips. Sub-cut the strips into (20) 2 ½" squares.
- (1) 1 ½" x WOF strip. Sub-cut the strip into (28) 1 ½" squares.

### From the Textured Ovals - Green/Textured Ovals - Red (H), cut:

- (1) 2 ½" x WOF strip. Sub-cut the strip into (12) 2 ½" squares.

### From the Lace Floral - Gold (I), cut:

#### Red Color Way

- (1) 6 ⅞" x WOF strip. Sub-cut the strip into (4) 6 ⅞" squares and (2) 6 ½" squares. Sub-cut the 6 ⅞" squares across (1) diagonal to make (8) Fabric I large triangles.
- (1) 7 ¼" x WOF strip. Sub-cut the strip into (1) 7 ¼" squares. Cut the squares across both diagonals to make (4) Fabric I small triangles.

#### Green Color Way

- (1) 6 ½" x WOF strip. Sub-cut the strip into (2) 6 ½" squares.

### From the Multi Button Flowers - Tan (J), cut:

- (1) 6 ½" x WOF strip. Sub-cut the strip into (3) 6 ½" squares.

### From the Tonal Button Flowers - Tan (K), cut:

- (1) 6 ½" x WOF strip. Sub-cut the strip into (6) 6 ½" squares.

### From the Textured Ovals - Tan (L), cut:

- (1) 6 ½" x WOF strip. Sub-cut the strip into (2) 6 ½" squares.

### From the Medallion - Red/Medallion - Green (M), cut:

#### Red Color Way

- See instructions to cut (2) appliques.

#### Green Color Way

- See instructions to cut (4) appliques.

### From the Textured Ovals - Red/Textured Ovals - Green (N), cut:

- See instructions to cut (3) appliques.

### From the Multi Button Flowers - Red/ Multi Button Flowers - Green (O), cut:

- See instructions to cut (2) appliques.

### From the Strawberry Foulard - Red/Tonal Button Flowers - Green (P) cut:

- See instructions to cut (2) appliques.

### From the Medallion - Wine (Q), cut:

#### Red Color Way

- See instructions to cut (2) appliques.

### From the Multi Button Flowers - Tan (Backing), cut:

- (2) 64" x WOF strips for the backing. Sew the strips together and trim to make the 64" x 64" back.

# SENTIMENTAL STITCHES

### Sewing Instructions

1. Following the manufacturer's instructions, trace the listed number of each template onto the paper side of the fusible web. Roughly cut out each template about  $\frac{1}{8}$ " outside the drawn lines.

2. Press each template onto the wrong side of the fabrics as listed on the templates. Cut out each template on the drawn lines.

3. Refer to the quilt photo to arrange and press the (13) appliques onto the assorted (13)  $6\frac{1}{2}$ " squares.

4. Finish the raw edges of each shape with a decorative stitch such as a buttonhole or satin stitch to complete the (13) applique blocks.

5. Refer to the quilt photo to sew the (36)  $1\frac{1}{2}$ " x  $6\frac{1}{2}$ " Fabric D strips, (28)  $1\frac{1}{2}$ " Fabric G squares, assorted applique blocks, the side setting and the corner setting triangles together to make the center block. Trim the center block to measure 30" square.

6. Sew (1)  $2\frac{3}{4}$ " x 30" Fabric B strip to each side of the center block. Sew (1)  $2\frac{3}{4}$ " x  $34\frac{1}{2}$ " Fabric B strip to the top and bottom of the center block.

7. Sew (19) assorted  $2\frac{1}{2}$ " squares together to make (1) scrappy border. Repeat to make (4) scrappy borders. Sew (1) scrappy border to each side of the center block.

8. Sew (1)  $2\frac{1}{2}$ " Fabric E square to each end of the remaining (2) scrappy borders to make the top border. Repeat to make the bottom border. Sew the borders to the center block to make the quilt top.

### Quilt Top Assembly

*(Refer to the Quilt Photo while assembling.)*

9. Sew (1)  $2$ " x  $38\frac{1}{2}$ " Fabric B strip to each side of the quilt top. Sew (1)  $2$ " x  $41\frac{1}{2}$ " Fabric B strip to the top and bottom of the quilt top.

10. Sew (1)  $8$ " x  $41\frac{1}{2}$ " Fabric A strip to each side of the quilt top.

11. Follow Figure 1 and sew (4) Fabric B small triangles, (1)  $3\frac{1}{4}$ " Fabric D square, (4) Fabric C triangles and (4) Fabric B large triangles together to make (1) corner block. Repeat to make (4) corner blocks total.

12. Sew (1) corner block to each end of (1)  $8$ " x  $41\frac{1}{2}$ " Fabric A strip. Repeat to make a second strip. Sew the strips to the top and bottom of the quilt top.

13. Layer and quilt as desired.

14. Sew the (6)  $2\frac{1}{2}$ " x WOF Fabric B strips together, end to end with 45-degree seams, to make the binding. Fold this long strip in half lengthwise with wrong sides together and press.

15. Bind as desired.



Fig. 1

