



www.studioefabrics.com

# Basket Quartet

## Black Version



finished quilt size: 68" x 68"

### Fabric Requirements

2163-99 1½ yards  
2164-22 ¾ yard  
2164-77 ¼ yard  
2165-77 ¼ yard  
2165-88 ¼ yard  
2166-33 ⅝ yard

*(includes binding)*

2167-44 1¼ yards  
2167-66 ¾ yard  
2167-99 3 yards  
2168-88 1 yard  
2165-44 4½ yards

*(for quilt backing)*

### Additional Supplies Needed

Batting: 76" x 76"

Coordinating Thread

Quilting and Sewing Supplies

All supplies for preferred method of appliqué, such as template plastic, freezer paper or fusible web, and thread to match fabrics

featuring fabrics from the Elementary collection by Martha Walker for



## Cutting

*Please note: all strips are cut across the width of the fabric from selvage edge to selvage edge.*

### From the 2163-99 Black Paisley, cut:

(6) 8½" strips for the outer border.

### From the 2164-22 Pink Ditsy, cut:

(2) 2½" strips. Recut into (24) 2½" x 2½" squares.

### From the 2165-77 Blue Vines, cut:

(1) 2½" strips. Recut into (16) 2½" x 2½" squares.

### From the 2166-33 Brown Stripe, cut:

(7) 2¼" strips for the binding.

### From the 2167-44 Gold Dot, cut:

(7) 2½" strips. Recut into (104) 2½" x 2½" squares.

### From the 2167-99 Black Dot, cut:

(4) 24½" strips. Recut into (4) 24½" x 24½" squares.

### From the 2168-88, Red Tonal, cut:

(1) 8½" strip. Recut into (4) 8½" x 8½" squares for the outer border corner blocks.

(7) 2½" strips. Recut into (48) 2½" x 4½" pieces and (20) 2½" x 2½" squares.

## Appliqué

1. Enlarge the key block provided 400% to prepare templates, freezer paper, or fusible web for your preferred method of appliqué.

2. Using the quilt pictured on the cover and the enlarged key block as guides, arrange a full set of appliqué motifs onto the right side of (1) 24½" black dot background square, making sure the arrangement is centered on the square in both directions. Appliqué the motifs to the square using the method of your choice. Repeat to make a total of (4) squares.

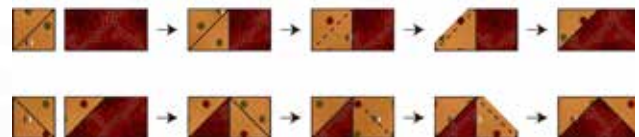
## Sewing

*All seams are sewn using 1/4" seam allowance with pieces held right sides together and raw edges even.*

3. Again using the quilt pictured on the cover as a guide, arrange the (4) floral appliqué blocks into (2) rows with (2) blocks in each row, rotating each block as shown. Stitch the blocks into rows and sew the rows together.

4. Using the method of your choice, appliqué the small quilt center motif to the medium quilt center motif. Appliqué this unit to the large quilt center motif. Appliqué the prepared motif to the quilt center.

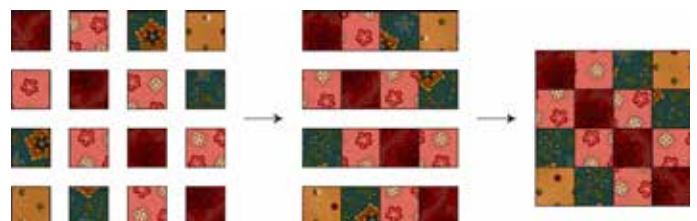
5. Referring to the diagram below, draw a diagonal line on the wrong side of (2) 2½" gold dot squares. Right sides together, layer a marked square on one end of a 2½" x 4½" red tonal piece. Sew on the marked line. Trim 1/4" beyond the seam line and press the resulting gold triangle out to make the unit shown. Repeat this procedure for the opposite end of the red tonal piece to make (1) flying geese unit. Repeat this procedure to make a total of (48) flying geese units.



6. Again using the quilt pictured on the cover as a guide, stitch together (12) flying geese units, end to end, to make a pieced border unit measuring 2½" x 48½". Repeat to make a total of (4) identical units. Stitch (2) of these units to the left and right sides of the quilt top, noting orientation. Stitch 2½" red tonal squares to both ends of each remaining flying geese strip. Sew these pieced borders to the top and bottom, again noting orientation.

7. Trim the selvages from the 8½" 2163-99, black paisley, strips. Sew the strips together end to end to make a long 8½" strip. From the long strip, cut (4) 52½" lengths (*if your measurements are different, cut to fit your quilt top*). Sew (2) lengths to the left and right sides of the quilt top.

8. Referring to the diagram below, arrange (6) 2½" pink ditsy, (4) 2½" red tonal, (4) 2½" blue vines, and (2) 2½" gold dot squares into (4) rows with (4) squares in each row. Stitch the squares into rows and sew the rows together to make (1) outer border corner block. Repeat to make a total of (4) blocks.



9. Stitch a block from step 8 to both ends of each remaining black paisley border unit from step 7, noting orientation of the corner blocks. Stitch these units to the top and bottom.

10. Layer the completed quilt top with batting and backing and quilt as desired. Bind the finished quilt using the 2¼", 2166-33, brown stripe, strips.



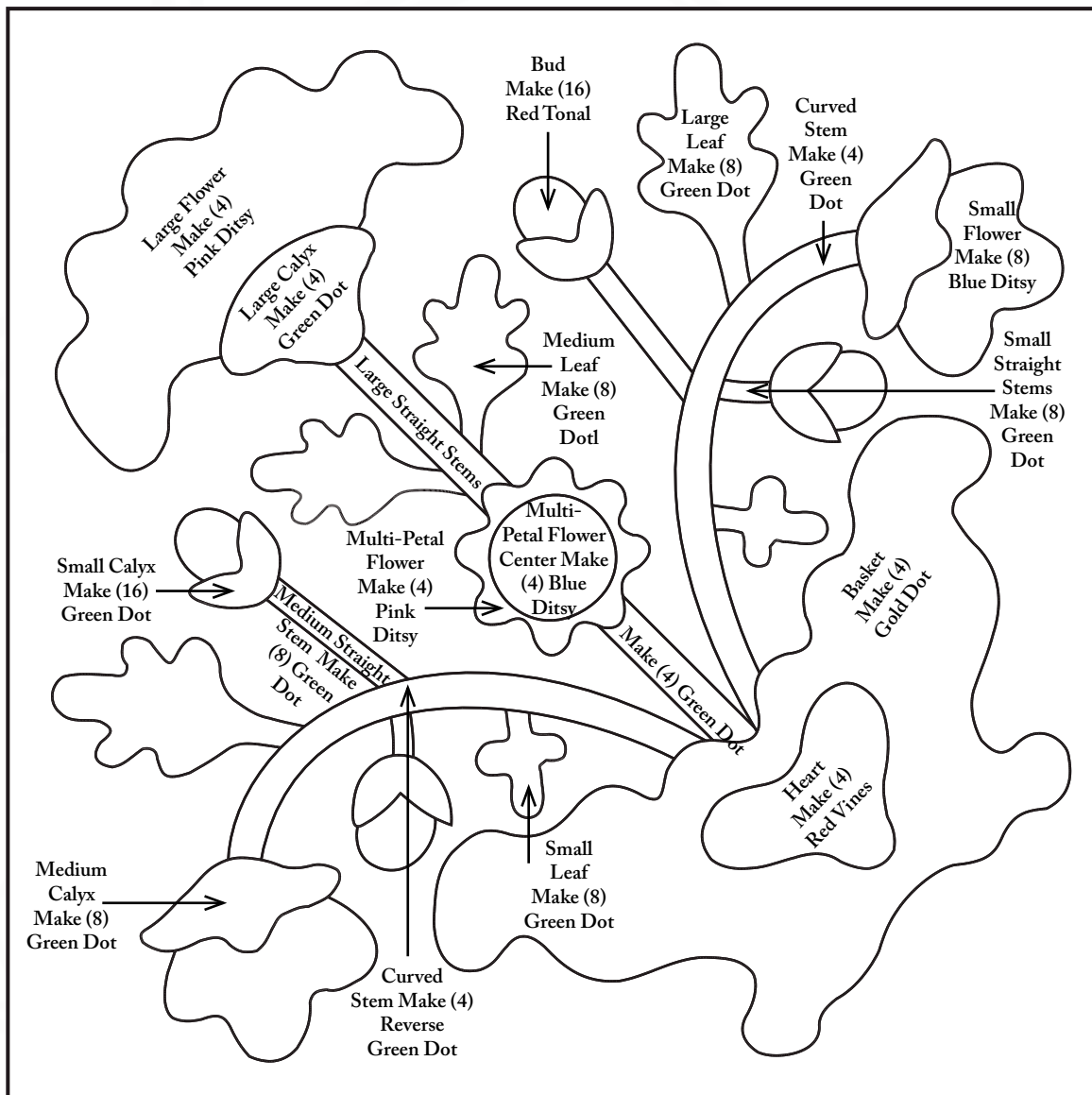
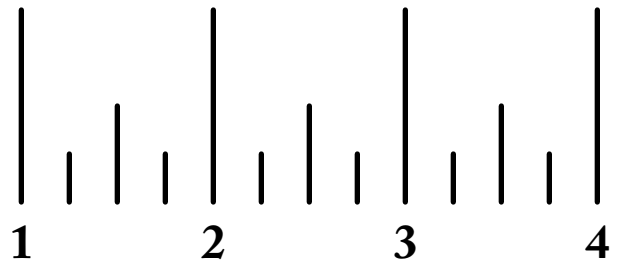
Enlarge Key Block templates 400%.

Templates shown are not reversed, and do not include seam allowances or overlaps.

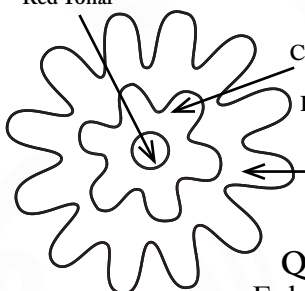
Be sure "do not scale"

button is selected during printing.

The enlarged key block should measure 24" square and can be used for correct placement of appliques.



Small  
Center Motif  
Make (1)  
Red Tonal



Medium  
Center Motif  
Make (1)  
Blue Vines

Large Center Motif  
Make (1)  
Pink Ditsy

**Quilt Center Motif**  
Enlarge Templates 515%

**Key Block and Appliqué Templates for Floral Block Appliqué**

# Elementary

## Fabrics in the Collection



Enlarge Templates 515%

2162-99 Mixed Patchwork



2163-77 Blue Paisley



2163-88 Red Paisley



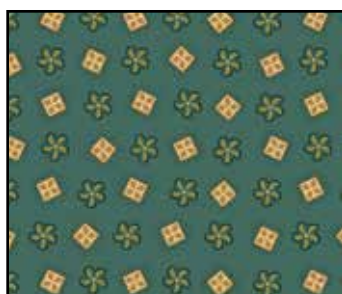
2163-99 Black Paisley



2164-22 Pink Ditsy



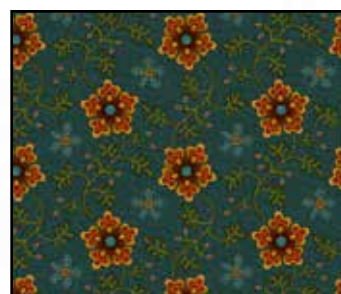
2164-33 Brown Ditsy



2164-77 Blue Ditsy



2165-44 Tan Vines



2165-77 Blue Vines



2165-88 Red Vines



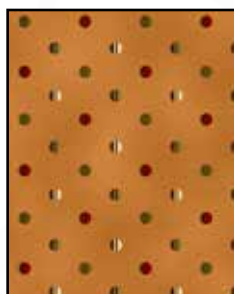
2166-33 Brown Stripe



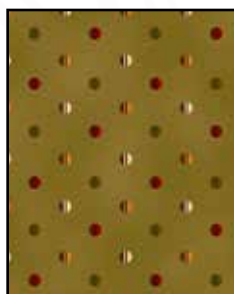
2166-66 Green Stripe



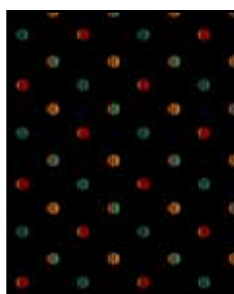
2166-77 Blue Stripe



2167-44  
Gold Dots



2167-66  
Green Dots



2167-99  
Black Dots



2168-44  
Cream Tonal



2168-66  
Green Tonal



2168-88  
Red Tonal