

# Poppy Patio

By Jill Finley



'NEEDLE ARTS'



Finished Quilt Size: 84" x 84"

A Free Project Sheet From



49 West 37th Street, New York, NY 10018

tel: 212-686-5194 fax: 212-532-3525

Toll Free: 800-294-9495

[www.henryglassfabrics.com](http://www.henryglassfabrics.com)

facebook

# POPPY PATIO

Finished Quilt Size: 84" x 84"

## Fabrics in the Collection



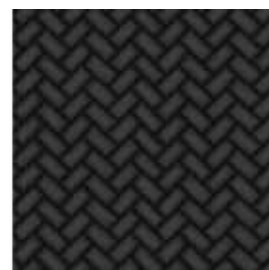
6089-44  
Yellow/White Vine



6089-22  
Pink/White Vine



6089-9  
Black/White Vine



6088-99  
Black Floor Tile



6088-88  
Red Floor Tile



6088-66  
Green Floor Tile



6087-66  
Green Words



6087-38  
Orange Words



6087-9  
White Words



6084-89  
Small Black Floral



6084-8  
Small White Floral



6083-3  
Large Yellow Floral



6083-2  
Large Pink Floral



6083-89  
Large Red Floral



6085-9  
Black/White  
Chevron



6085-6  
Green/White  
Chevron



6085-4  
Yellow/White  
Chevron



6085-2  
Red/White  
Chevron

# POPPY PATIO

Page 1

## Materials:

2 yards	Black Floor Tile	6088-99
1 ¾ yards	White Words	6087-9
2/3 yard	Small Black Floral	6084-89
1 ¾ yards	Large Red Floral	6083-89*
2/3 yard	Green Floor Tile	6088-66
⅓ yard	Large Pink Floral	6083-2
⅓ yard	Large Yellow Floral	6083-3
⅓ yard	Small White Floral	6084-8
⅓ yard	Black/White Vine	6089-9
⅓ yard	Red/White Chevron	6085-2
⅓ yard	Yellow/White Chevron	6085-4
⅓ yard	Green/White Chevron	6085-6
⅓ yard	Black/White Chevron	6085-9
⅜ yard	Yellow/White Vine	6089-44
⅜ yard	Pink/White Vine	6089-22
⅜ yard	Orange Words	6087-38
⅜ yard	Green Words	6087-66
⅜ yard	Red Floor Tile	6088-88
8 yards	Backing	6083-2

\* Substitute 6083-2 for the Pink Large Floral Version or 6083-3 for the Yellow Large Floral Version.

## Cutting Instructions:

### From 6088-99, cut:

(28) 1 ½" x WOF strips. Sub-cut into (784) 1 ½" squares.

(9) 2 ½" x WOF strips for the binding.

### From 6087-9, cut:

(8) 6 ½" x WOF strips. Sew the strips together and trim to make two 6 ½" x 72 ½" and two 6 ½" x 60 ½" strips.

### From 6084-89, cut:

(7) 2 ½" x WOF strips. Sew the strips together to make two 2 ½" x 60 ½" strips and two 2 ½" x 56 ½" strips.

### From 6083-89\*, cut:

(8) 6 ½" x WOF strips. Sew the strips together to make two 6 ½" x 84 ½" strips and two 6 ½" x 72 ½" strips.

### From 6088-66, cut:

(10) bias strips 7/8" wide

See instructions to cut twenty-four leaves.

### From 6089-44, 6089-22, 6088-88 6087-66 and 6087-38, cut:

(14) 4 ½" squares and see instructions for applied flowers and leaf detail

### From the remaining fabrics, cut:

(14) 4 ½" squares from each fabric.

### From Backing, cut:

(3) 92" x WOF strips. Sew the strips together and trim to make one 92" x 92" piece for the backing.

### Center Blocks Assembly:

1. Place one 1 ½" 6088-99 square on the top left corner of one 4 ½" 6089-44 square, right sides together (Fig. 1). Sew across the diagonal of the smaller square from the upper right corner to the lower left corner (Fig. 1). Flip open the triangle formed and press (Fig. 2). Trim away the excess fabric from behind the triangle ¼" away from the sewn seam.

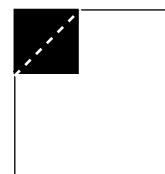


Fig. 1

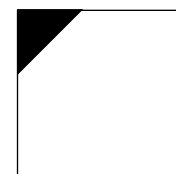


Fig. 2

2. Follow Figure 3 for the seam direction to add a 1 ½" 6088-99 square to each of the remaining corners of the 4 ½" 6089-44 square to make one center block.



Fig. 3

3. Repeat Steps 1-2 using the remaining 4 ½" squares of the various fabrics and 1 ½" squares of 6088-99 to make a total of one hundred ninety-six center blocks (Fig. 4).

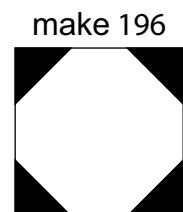


Fig. 4

4. Sew the blocks into a fourteen-block by fourteen-block square, using the quilt photo as a guide or a pattern of your choice to create the 56 ½" x 56 ½" quilt top.

# POPPY PATIO

Page 2

## Quilt Assembly:

5. Sew one 2 ½" x 56 ½" 6084-89 strip to each side of the quilt top. Sew one 2 ½" x 60 ½" 6084-89 strip to the top and bottom of the quilt top.
6. Sew one 6 ½" x 60 ½" 6087-9 strip to each side of the quilt top. Sew one 6 ½" x 72 ½" strip to the top and bottom of the quilt top.
7. Using your favorite method, hand or machine applique the flowers, leaves, leaf accents and vines in place around the 6087-9 border (Fig. 4).
8. Sew one 6 ½" x 72 ½" 6083-89 strip to each side of the quilt. Sew one 6 ½" x 84 ½" 6083-89 strip to the top and bottom of the quilt.
9. Layer and quilt as desired.
10. Sew the nine 2 ½" x WOF 6088-99 strips together, end-to-end with 45° seams, to make the binding. Fold this long strip in half lengthwise, with wrong sides together, and press.
11. Bind as desired.

**Large Flower  
Trace 16**

**Leaf Detail A  
Trace 16**

**Leaf Detail B  
Trace 8**

**Leaf A  
Trace 16**

**Leaf B  
Trace 8**

**Large Flower Center  
Trace 16**

**Small Flower  
Trace 8**

**Small Flower  
Center  
Trace 8**