

SWEET HOLLY

17" Round Mini Table Treat

Correction-holly leaves

From All 'Round the Seasons booklet
by Kansas Troubles Quilters

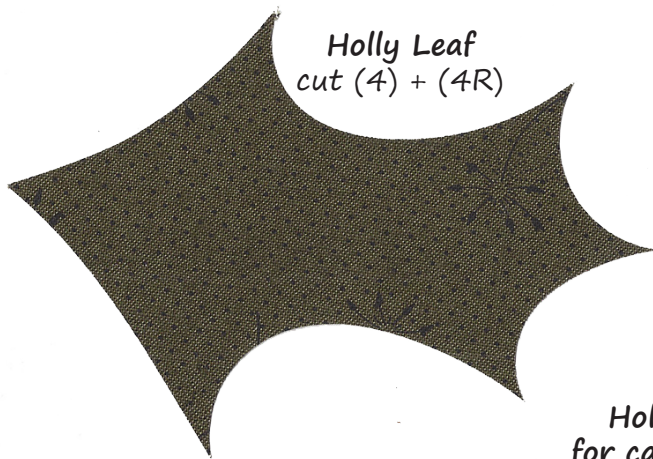
TEMPLATES

Trace templates onto lightweight fusible web. Fuse to selected fabrics; cut on drawn lines. Peel fusible web paper from back of applique.

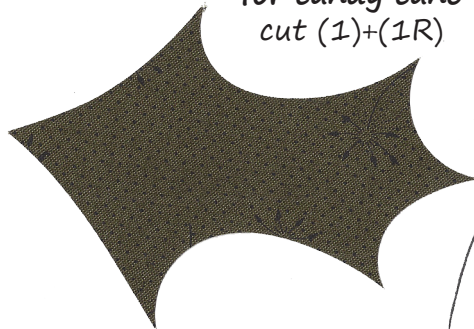
Position candy cane and ribbon on edge of small circle, as shown; fuse in place. Topstitch $\frac{1}{8}$ " from fused edges of candy cane and ribbon with matching cotton thread. Place (2) small leaves on center of ribbon bow; fuse. Place pairs of larger holly leaves around outer edge of tan small circle with points touching, as shown; fuse in place. Topstitch $\frac{1}{8}$ " from fused edges of leaves with green cotton thread. Add center vein, if desired.



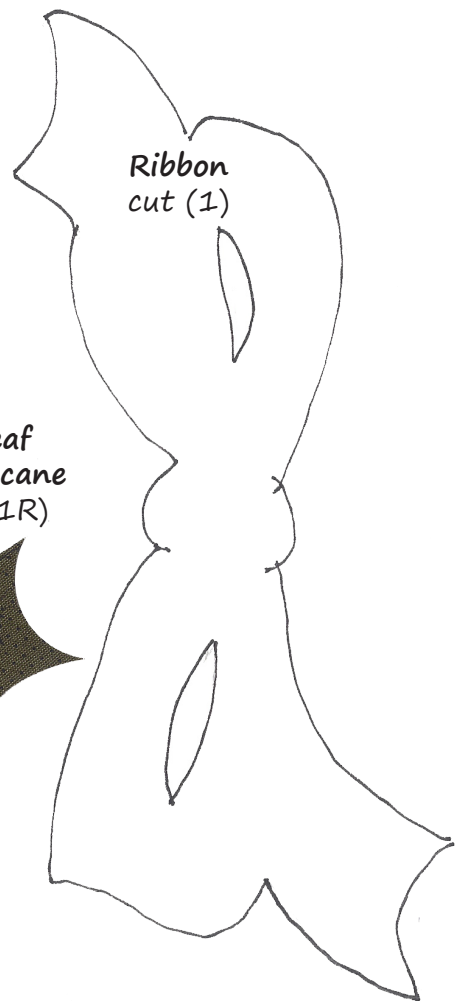
Candy Cane
cut (1)



Holly Leaf
cut (4) + (4R)



Holly Leaf
for candy cane
cut (1)+(1R)



Ribbon
cut (1)

Templates are
reversed for
your convenience.