

KIMBERBELL®

EXPERIENCE THE JOY OF CREATIVITY®

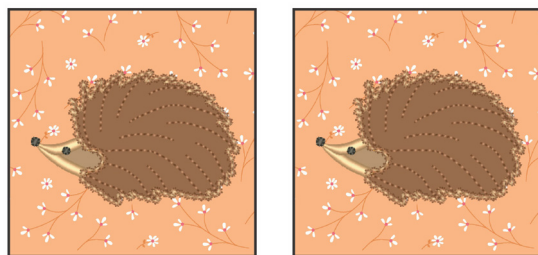


DIGITAL DEALER
EXCLUSIVES
— MYSTERY QUILT: WALLFLOWER —
SEPTEMBER BLOCK

QUILT BLOCK INSTRUCTIONS

September Block

Make 2 blocks.



Note: The materials listed below are for (1) block.

Fabric 1: Background (1) 6½ x 6½"

Fabric 2: Face* (1) 2 x 1½"

Fabric 3: Body* (4) 4 x 3"

*An SVG file is provided. **Note:** For the Body pieces, the SVG file should be used for the base layer **only**.

Stabilizer (Additional stabilizers are listed below.)

Fusible Backing



• Iron **Fusible Backing** to the **wrong side** of the Background and Face Fabrics.

Embroidery Thread Colors

Charcoal* Brown Gold

Background Quilting Thread Color: Cream*

*Not included in the Glide thread kit.

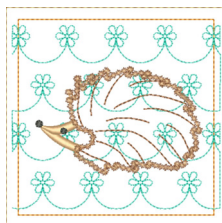
Option 1: Block-By-Block Quilting

• Hoop the **Light Mesh Cut-Away Stabilizer** only.



Design

kdq523-floral-11,
4x4 horizontal design
4.50 x 4.50" or 114.4 x 114.4 mm



Centered Alignment:

- Align the block embroidery file with the quilting design file so that both files are **centered**.
- Refer to the Block-by-Block Quilting Instructions on pages 9–10 in the **Tips and Tricks** PDF. Design and alignment information are listed above.
- After quilting, go to the Embroidery Instructions.

Option 2: Hooping Instructions

(Refer to page 7 in the **Tips and Tricks** PDF.)

Traditional Hooping:

- Mark the **center** of the Background Fabric.
- Cut the **Medium Cut-Away Stabilizer** larger than the embroidery hoop.
- Tape the fabric to the **center** of the stabilizer.
- Hoop the stabilizer and fabric with the **center** mark in the **center** of the hoop.
- Go to the Embroidery Instructions.

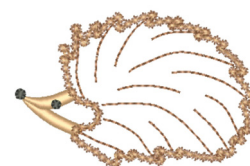


Embroidery Instructions

Embroidery File

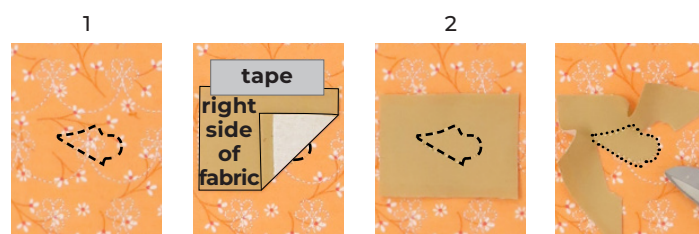
4x4-september

4x4:
2.24 x 3.41" or 56.8 x 86.6 mm
2,954 stitches

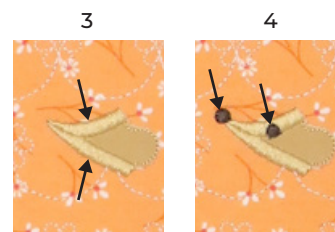


Note: The photos in these instructions feature the Block-by-Block Quilting Method. Both hooping options can be made using these instructions.

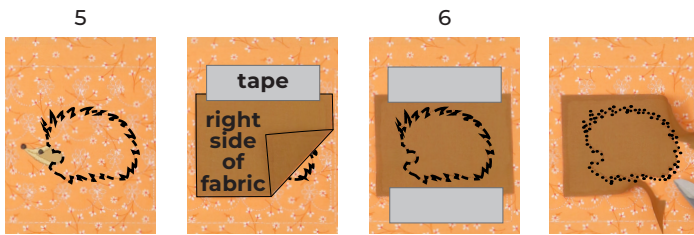
- Load the embroidery file into the machine.
- 1. Stitch the Face Placement Line.
- Place the Face Fabric, **right side up**.
- 2. Stitch the Face Tack-down Line.
- Trim the fabric close to the stitch line.



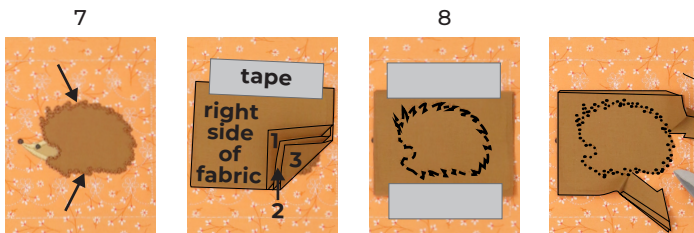
- 3. Stitch the Face Satin Outline.
- 4. Stitch the Nose and Eye Fills.



5. Stitch the Body Placement Line.
 - Place **(1)** Body Fabric piece, **right side up**.
6. Stitch the Body Tack-down Line.
 - Trim the fabric close to the stitch line.



7. Stitch the Body Decorative Outline.
 - Place the remaining **(3)** Body Fabric pieces, **right side up**. Tape in place.
8. Stitch the Chenille Basting Line.
 - Remove the tape. Trim the fabric close to the Chenille Basting Line. Be sure to cut all **(3)** layers of fabric. **Do not cut the base layer of applied fabric.**



9. Stitch the Chenille Spines Lines.
 - Using a seam ripper, remove the basting line stitched in **Machine Step 8**.
 - Carefully cut **between** the Chenille Spines Lines (illustrated in **blue**). Be sure to cut all **(3)** layers of fabric. **Do not cut the base layer of applied fabric.**



- Lightly spray the fabric with water to aid in the chenille process.
- Pull the chenille fabric away from the face area. Place tape over the Face Satin Outline as shown. This will protect the satin stitch when you fluff the chenille.
- Fluff the chenille with a nail file or a stiff brush.
- Carefully remove the tape.
- Remove the block from the hoop.



Trimming Instructions

(Refer to page 8 in the **Tips and Tricks** PDF.)

- Place a 4½ x 4½" Orange Pop Ruler over the block.
- Visually center the design and trim the block to 4½ x 4½".

