

# KIMBERBELL®

EXPERIENCE THE JOY OF CREATIVITY®

DIGITAL DEALER EXCLUSIVES

— MYSTERY QUILT: WALLFLOWER —

AUGUST BLOCK



# QUILT BLOCK INSTRUCTIONS

## August Block

Make 2 blocks.



### Special Trimming instructions

**Note:** The materials listed below are for (1) block.

Fabric 1: Background	(1) 8½ x 10½"
Fabric 2: Flower 1	(1) 2½ x 2½"
Fabric 3: Flower 4	(1) 3 x 2½"
Fabric 4: Leaves*	(1) 3½ x 3½"
<b>Flexi Foam:</b> Flower 1 Base	(1) 2 x 2"

**Optional:** Fray Preventive Product

\*An SVG file is provided.

**Stabilizer** (Additional stabilizers are listed below.)

**Fusible Backing**



• Iron **Fusible Backing** to the **wrong side** of the Background and Leaves Fabrics.

## Embroidery Thread Colors

Red	Dark Green	Purple
Light Pink	Light Green	Blue-Purple

Background Quilting Thread Color: ☒ Cream\*

\*Not included in the Glide thread kit.

## Option 1: Block-By-Block Quilting

• Hoop the **Light Mesh Cut-Away Stabilizer** only.



### Design

- ☒ kdq521-spring-6, 6x8 design  
6.50 x 8.50" or 165.2 x 216.0 mm

### ⚠️ Special Alignment:

- Align the block embroidery file with the **bottom** of the quilting design.
- Refer to the Block-by-Block Quilting Instructions on pages 9–10 in the **Tips and Tricks** PDF. Design and alignment information are listed above.
- **To quilt with a 5x7 or smaller hoop**, refer to the Quilting Blocks in a 5x7 Hoop Instructions on page 11 in the **Tips and Tricks** PDF.
- After quilting, go to the Embroidery Instructions.



**Note:** If doing block-by-block quilting, skip to Machine Step 3.

## Option 2: Hooping Instructions

(Refer to page 7 in the **Tips and Tricks** PDF.)

### Placement Line Hooping:

- Cut the **Medium Cut-Away Stabilizer** larger than the embroidery hoop.
- Hoop the stabilizer only.
- Go to the Embroidery Instructions.



## Embroidery Instructions

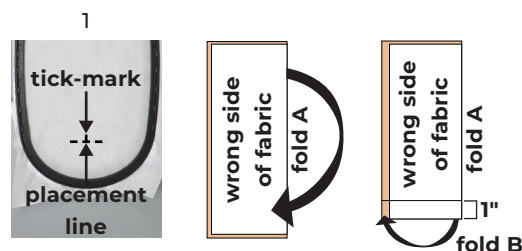
### Embroidery File 5x7-august

- 5x7:  
4.98 x 6.98" or 126.4 x 177.3 mm  
15,586 stitches

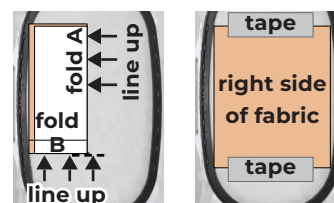


**Note:** The photos in these instructions feature the Block-by-Block Quilting Method. Both hooping options can be made using these instructions.

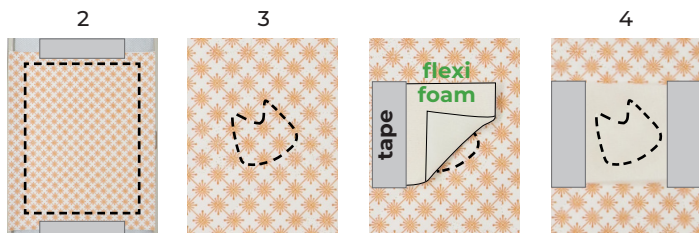
- Load the embroidery file into the machine.
- 1. In a visible color, stitch the Background Placement Line and Tick-mark directly onto the stabilizer.
- Fold the Background Fabric in half **lengthwise, right sides together**. Finger press along the fold. This is fold A.
- Fold the bottom **short edge** up 1". Finger press along the fold. This is fold B.



- Align fold A with the tick-mark and fold B with the placement line as shown.
- Unfold and smooth the fabric. Tape in place.

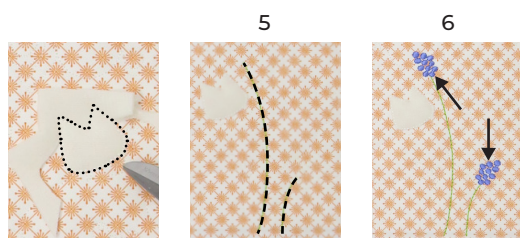


- 2. Stitch the Background Basting Line.
  - Carefully remove the tape.
- 3. Stitch the Flower 1 Base Placement Line.
  - Place the Flower 1 Base **Flexi Foam**. Tape in place.
- 4. Stitch the Flower 1 Base Tack-down Line.



· Remove the tape. Trim the foam close to the stitch line.

- 5. Stitch the Flowers 2 Stem Details.
- 6. Stitch the Flowers 2 Fills.

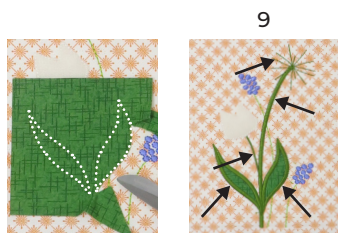


- 7. Stitch the Leaves Placement Lines.
  - Place the Leaves Fabric, **right side up**.
- 8. Stitch the Leaves Tack-down Lines.

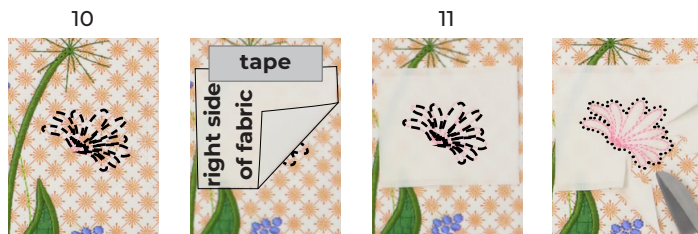


· Trim the fabric close to the stitch lines.

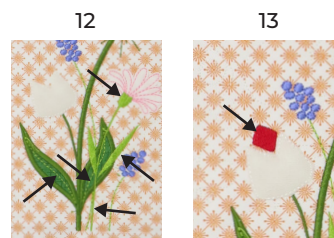
- 9. Stitch the Leaves Satin Outlines and the Stems Fills.



- 10. Stitch the Flower 4 Placement Lines.
  - Place the Flower 4 Fabric, **right side up**.
- 11. Stitch the Flower 4 Tack-down Lines.
  - If desired, apply a fray preventive product on the flower's outer stitch line. Trim the fabric as desired. This is a raw-edge applique.



- 12. Stitch the Flower 4 Stem and Leaves Fills and Flower 1 Leaves Details.
- 13. Stitch the Flower 1 Petal Fill.



- 14. Stitch the Flower 1 Placement Line.
  - Place the Flower 1 Fabric, **right side up**.
- 15. Stitch the Flower 1 Tack-down Line.
  - Trim the fabric close to the stitch line.



- 16. Stitch the Flower 1 Satin Outline.
- 17. Stitch the Flower 3 Details.
  - Using a seam ripper, remove the Background Basting Line stitched in **Machine Step 2**. **Note: Skip this step if doing block-by-block quilting.**
  - Remove the block from the hoop.





## Trimming Instructions

(Refer to page 8 in the **Tips and Tricks** PDF.)



- Place a 6½ x 8½" Orange Pop Ruler over the block.
- Center the design **horizontally**, with the bottom of the stems **aligned with the inner bottom** edge of the ruler.
- Square the block to 6½ x 8½".

• **Note:** The bottom of the stems will be sewn into the seam.

