



KIMBERBELL®

EXPERIENCE THE JOY OF CREATIVITY®

DIGITAL DEALER
EXCLUSIVES

— MYSTERY QUILT: WALLFLOWER —

JULY BLOCK

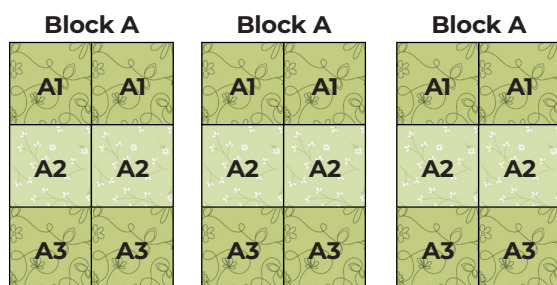
QUILT BLOCK INSTRUCTIONS

July Block

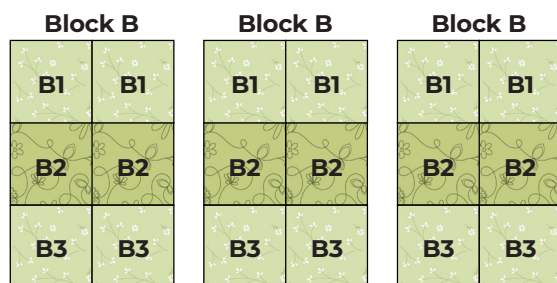
Make 6 hoopings.

Note: The embroidery file makes **(2)** blocks at a time.
Stitch the embroidery file **(6)** times for a total of **(12)** blocks.

For the first **(3)** hoopings, use **Block A** fabrics in each hoopings, for a total of **(6)** blocks. Block A consists of **(2)** Fabric 1 pieces and **(1)** Fabric 2 piece.



For the last **(3)** hoopings, use **Block B** fabrics in each hoopings, for a total of **(6)** blocks. Block B consists of **(1)** Fabric 1 piece and **(2)** Fabric 2 pieces.



Fabric 1 (Dark): Pieces A1, A3, B2
Fabric 2 (Light): Pieces A2, B1, B3

(9) 3½ x 6½"
(9) 3½ x 6½"

Note: No SVG files are provided.

Stabilizer

Light Mesh Cut-Away Stabilizer

Starch and press **all** fabrics.

Embroidery Thread Colors

Use a neutral or white color.

Background Quilting Thread Color: Light Green

Optional Block-By-Block Quilting Instructions

- This block will be quilted **after** it has been pieced and sewn together. Additional directions for block-by-block quilting are at the end of this block's instructions.
- Go to the Hooping Instructions.

Hooping Instructions

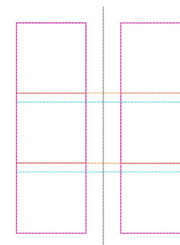
- Cut the **Light Mesh Cut-Away Stabilizer** larger than the embroidery hoop.
- Hoop the stabilizer only.
- Go to the Embroidery Instructions.

Embroidery Instructions

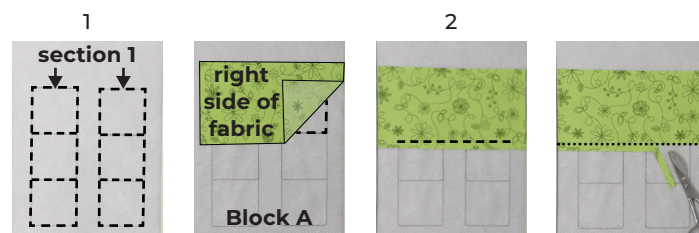
Embroidery File

5x7-july

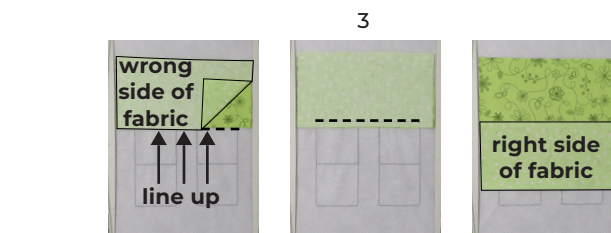
5x7:
5.00 x 7.00" or 127.1 x 177.8 mm
865 stitches



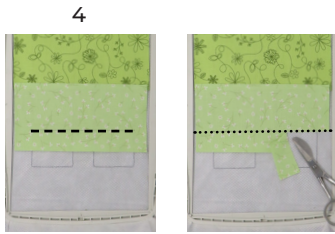
1. Stitch the Blocks Template directly onto the stabilizer.
 - Place the Piece A1 Fabric, **right side up**, centered over Sections 1.
2. Stitch the Trimming/Placement Line.
 - Trim the fabric close to the stitch line.



- Place the Piece A2 Fabric, **right side down**, centered along the stitch line.
- 3. Stitch the Seam.
 - Flip the fabric **right side up**. Press well.



4. Stitch the Trimming/Placement Line.
 • Trim the fabric close to the stitch line.

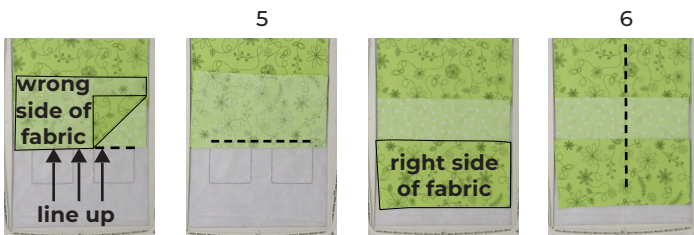


- Place the Piece A3 Fabric, **right side down**, centered along the stitch line.

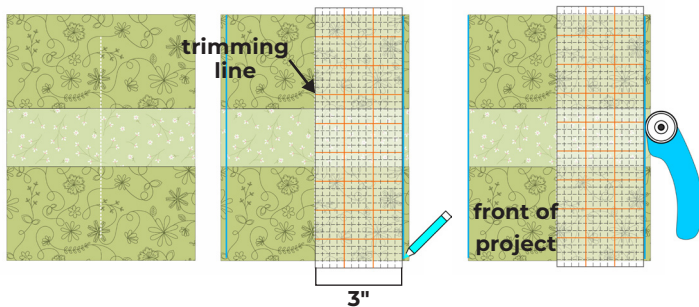
5. Stitch the Seam.

- Flip the fabric **right side up**. Press well.

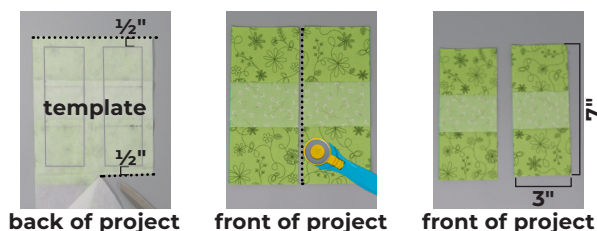
6. Stitch the Trimming Line.



- Remove the project from the hoop.
 • Using a quilting ruler and a marking pen, measure and mark a **vertical** line 3" from each side of the **vertical** trimming line as shown.
 • Using a quilting ruler and a rotary cutter, cut away the excess fabric on the marked lines.

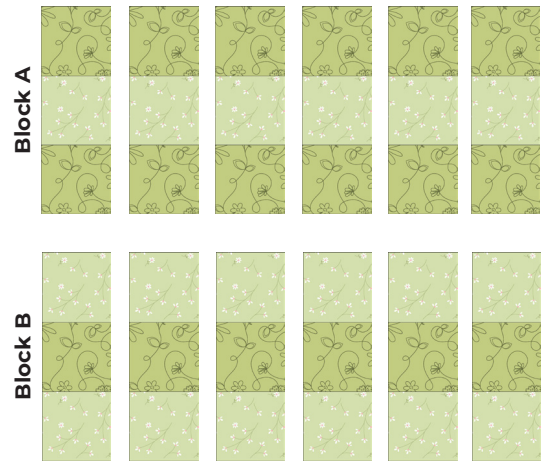


- Turn the project to the **back**. Using the template on the back, **trim 1/2" from both short ends of the block**.
 • Using a quilting ruler and a rotary cutter, cut the block in **half** directly on the trimming line stitched in **Machine Step 6**.
 • Each block should measure 3 x 7". Set aside for later use.



- Repeat the **Embroidery Instructions (2)** more times with Pieces A1, A2, and A3. Repeat again **(3)** more times with Pieces B1, B2, and B3, until you have a total of **(12)** blocks.

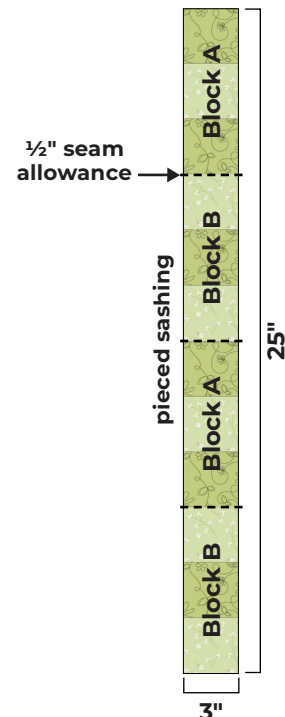
- Go to the Assembly Instructions.



Assembly Instructions



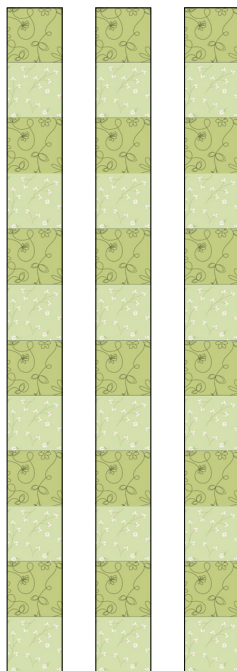
1. Arrange **(4)** blocks in a row as shown. Using a sewing machine, sew the blocks together into a sashing, **using a 1/2" seam allowance**.
 2. The Pieced Sashing should measure 3 x 25".



 3. Press open the seams. Press the sashing well.

Repeat **Direction Steps 1-3 (2)** more times, until you have a total of **(3) Pieced Sashing strips**.

• If you are doing **Block-by-Block quilting**, go to the Optional Block-by-Block Quilting Instructions.



Optional Block-by-Block Quilting Instructions

Design

■ kdq524-border-spring-3, 2" width 

Quilt the Pieced Sashing:

- Follow the instructions provided with the border quilting design.
- Be sure to begin quilting with the **dark** fabric at the **top**.



light

dark

