



KIMBERBELL[®]

EXPERIENCE THE JOY OF CREATIVITY[®]

DIGITAL DEALER
EXCLUSIVES

— MYSTERY QUILT: WALLFLOWER —

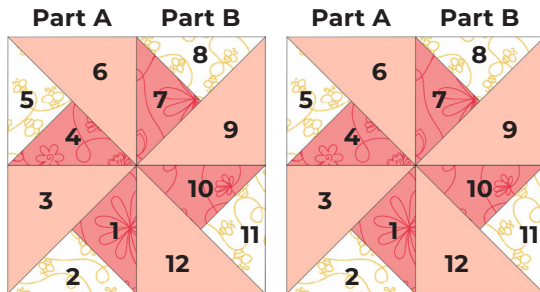
MAY BLOCK

QUILT BLOCK INSTRUCTIONS

May Block

Make 2 blocks.

Note: This block is stitched as (2) pieces, Part A and Part B, which will then be sewn together.



Note: The materials listed below are for (1) block.

Fabric 1: Piece 1	(1) 2½ x 3"
Piece 4	(1) 2½ x 3"
Piece 7	(1) 2½ x 3"
Piece 10	(1) 2½ x 3"
Fabric 2: Piece 2	(1) 2½ x 3"
Piece 5	(1) 2½ x 3"
Piece 8	(1) 2½ x 3"
Piece 11	(1) 2½ x 3" w
Fabric 3: Piece 3	(1) 4 x 3"
Piece 6	(1) 4 x 3"
Piece 9	(1) 4 x 3"
Piece 12	(1) 4 x 3"

Stabilizer

Light Mesh Cut-Away Stabilizer

Fusible Backing



• Iron **Fusible Backing** to the **wrong side** of the Piece 2, Piece 5, Piece 8, and the Piece 11 Fabrics.

Embroidery Thread Colors

Use a neutral or white color.

Background Quilting Thread Color: Cream*

*Not included in the Glide thread kit.

Optional Block-By-Block Quilting Instructions

- This block will be quilted **after** it has been pieced and sewn together. Additional directions for block-by-block quilting are at the end of this block's instructions.
- Go to the Hooping Instructions.

Hooping Instructions

- Cut the **Light Mesh Cut-Away Stabilizer** larger than the embroidery hoop.
- Hoop the stabilizer only.
- Go to the Embroidery Instructions.

Embroidery Instructions

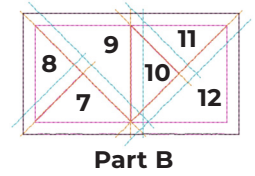
Embroidery File

5x7-may

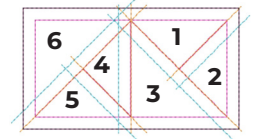
5x7:

4.98 x 6.97" or 126.5 x 177.0 mm

1,953 stitches

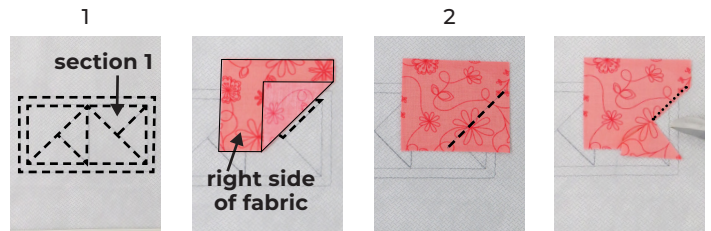


Part B



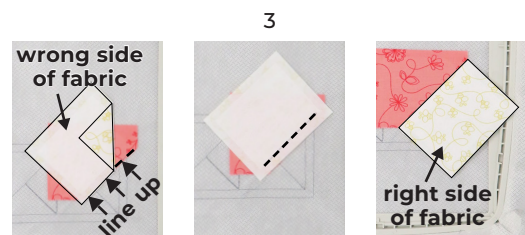
Part A

- Load the embroidery file into the machine.
- 1. Stitch the Part A Piecing Template directly onto the stabilizer.
 - Place the Piece 1 Fabric, **right side up**, centered over Section 1.
- 2. Stitch the Trimming/Placement Line.
 - Trim the fabric close to the stitch line.

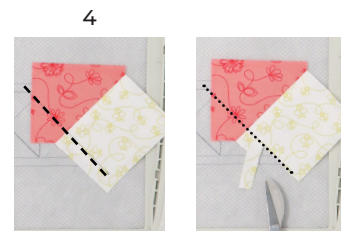


- Place the prepared Piece 2 Fabric, **right side down**, centered along the stitch line.

- 3. Stitch the Seam.
 - Flip the fabric **right side up**. Press well.



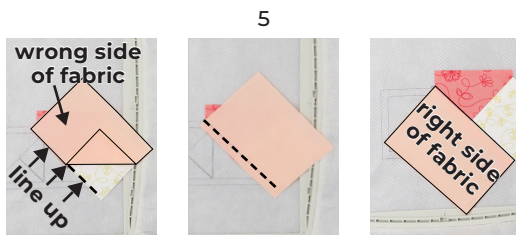
- 4. Stitch the Trimming/Placement Line.
 - Trim the fabric close to the stitch line.



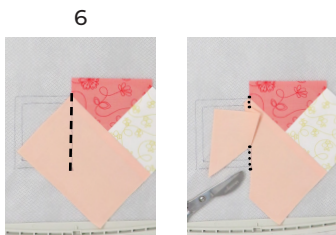
• Place the Piece 3 Fabric, **right side down**, centered along the stitch line.

5. Stitch the Seam.

 • Flip the fabric **right side up**. Press well.



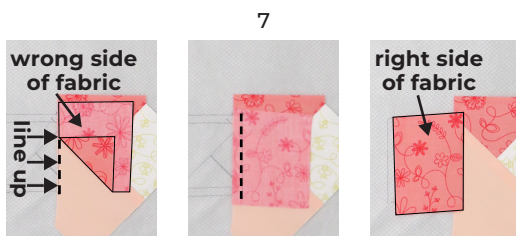
6. Stitch the Trimming/Placement Line.
• Trim the fabric close to the stitch line.



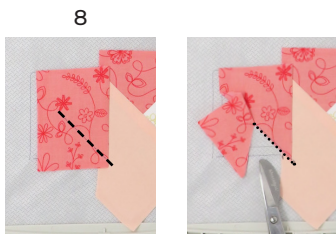
• Place the Piece 4 Fabric, **right side down**, centered along the stitch line.

7. Stitch the Seam.

 • Flip the fabric **right side up**. Press well.



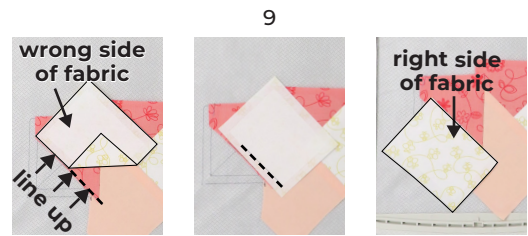
8. Stitch the Trimming/Placement Line.
• Trim the fabric close to the stitch line.



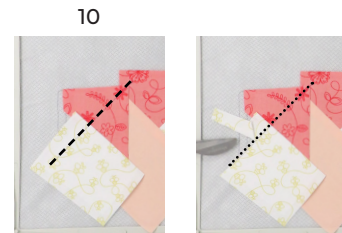
• Place the prepared Piece 5 Fabric, **right side down**, centered along the stitch line.

9. Stitch the Seam.

 • Flip the fabric **right side up**. Press well.



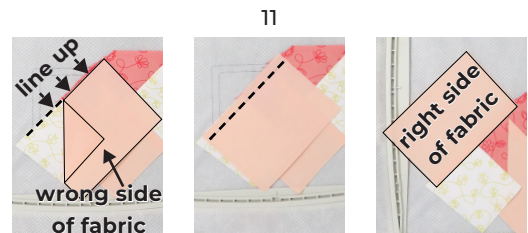
10. Stitch the Trimming/Placement Line.
• Trim the fabric close to the stitch line.



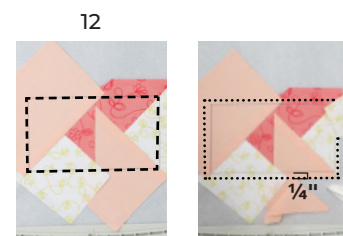
• Place the Piece 6 Fabric, **right side down**, centered along the stitch line.

11. Stitch the Seam.

 • Flip the fabric **right side up**. Press well.

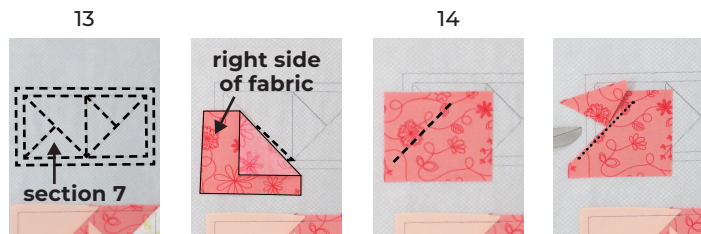


12. Stitch the Final Tack-down Line.
• Trim the fabric $\frac{1}{4}$ " from the tack-down line.



- 13. Stitch the Part B Piecing Template directly onto the stabilizer.
 - Place the Piece 7 Fabric, **right side up**, centered over Section 7.

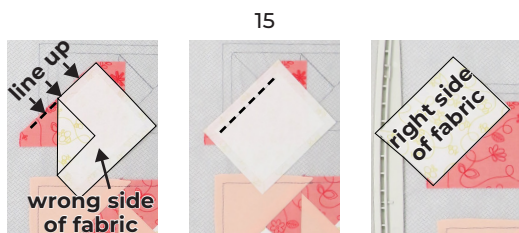
- 14. Stitch the Trimming/Placement Line.
 - Trim the fabric close to the stitch line.



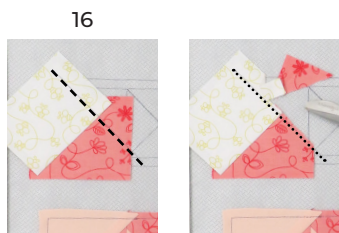
- Place the prepared Piece 8 Fabric, **right side down**, centered along the stitch line.

- 15. Stitch the Seam.

- Flip the fabric **right side up**. Press well.



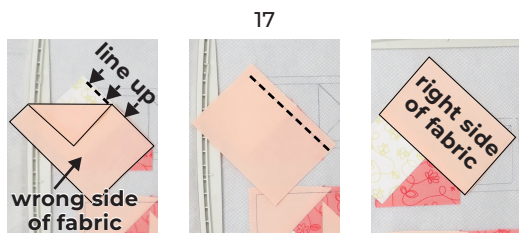
- 16. Stitch the Trimming/Placement Line.
 - Trim the fabric close to the stitch line.



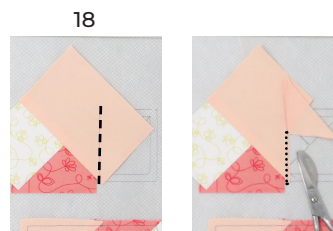
- Place the Piece 9 Fabric, **right side down**, centered along the stitch line.

- 17. Stitch the Seam.

- Flip the fabric **right side up**. Press well.



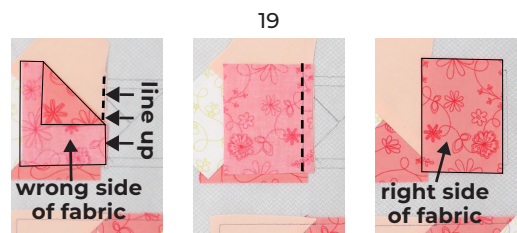
- 18. Stitch the Trimming/Placement Line.
 - Trim the fabric close to the stitch line.



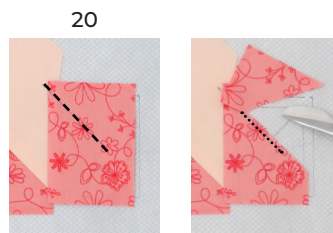
- Place the Piece 10 Fabric, **right side down**, centered along the stitch line.

- 19. Stitch the Seam.

- Flip the fabric **right side up**. Press well.



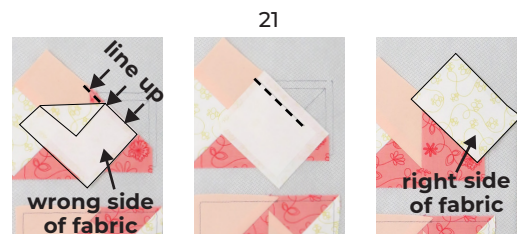
- 20. Stitch the Trimming/Placement Line.
 - Trim the fabric close to the stitch line.



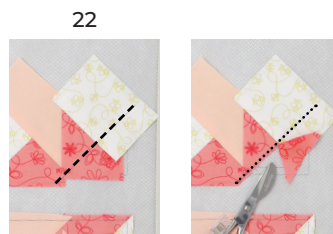
- Place the prepared Piece 11 Fabric, **right side down**, centered along the stitch line.

- 21. Stitch the Seam.

- Flip the fabric **right side up**. Press well.



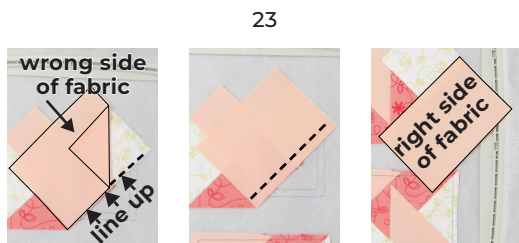
- 22. Stitch the Trimming/Placement Line.
 - Trim the fabric close to the stitch line.



- Place the Piece 12 Fabric, **right side down**, centered along the stitch line.

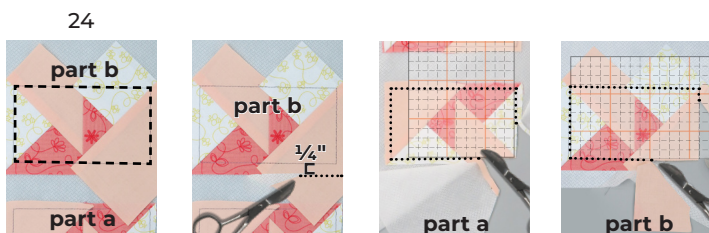
23. Stitch the Seam.

- Flip the fabric **right side up**. Press well.



24. Stitch the Final Tack-down Line.

- Trim the fabric $\frac{1}{4}$ " from the tack-down line.
- Remove the project from the hoop.
- Trim the Part A piece to $2\frac{1}{2}$ x $4\frac{1}{2}$ " on the Final Tack-down Line stitched in **Machine Step 12**.
- Trim the Part B piece to $2\frac{1}{2}$ x $4\frac{1}{2}$ " on the Final Tack-down Line stitched in **Machine Step 24**.
- Go to the Assembly Instructions.



Assembly Instructions

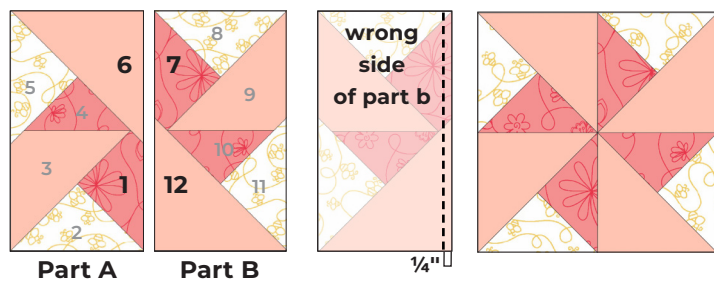
- Orient the Part A and Part B sections to form a pinwheel shape as shown, aligning Part A Pieces 6 and 1 with Part B Pieces 7 and 12.

- Place the Part A and Part B sections **right sides together**. Using a sewing machine, sew the center seam with a $\frac{1}{4}$ " seam allowance.

- Unfold the block. **Press the seam open**. Press the block well.

- The block should measure $4\frac{1}{2}$ x $4\frac{1}{2}$ ".

- If you are doing block-by-block quilting**, go to the Optional Block-by-Block Quilting Instructions.



Optional Block-By-Block Quilting Instructions

Design

- kdq521-spring-6, 4x4 design
4.50 x 4.50" or 114.4 x 114.4 mm



- Follow the Technique 2 Instructions provided with the quilting design.

