

# KIMBERBELL®

EXPERIENCE THE JOY OF CREATIVITY®



DIGITAL DEALER  
EXCLUSIVES

— MYSTERY QUILT: WALLFLOWER —

APRIL BLOCK



# QUILT BLOCK INSTRUCTIONS

## April Block

Make 2 blocks.

This block is made in **(2)** parts:

**Part A** is embroidering the dimensional wings.

**Part B** is making the block.



**Note:** The materials listed below are for **(1)** block.

### Part A

Iridescent Mylar: Wings Shimmer

**(1)** 4½ x 2"

White Tulle: Dimensional Wings

**(2)** 4½ x 2"

### Part B

Fabric 1: Background

**(1)** 6½ x 6½"

Fabric 2: Body\*

**(2)** 2 x 2½"

Fabric 3: Stripes\*

**(1)** 2 x 2"

\*An SVG file is provided.

### Part A Stabilizer

Wash-Away Stabilizer



### Part B Stabilizer

(Additional stabilizers are listed in Part B.)

Fusible Backing



• Iron **Fusible Backing** to the **wrong side** of the Background Fabric.

## Embroidery Thread Colors

Charcoal\* Cream\* Yellow

Background Quilting Thread Color: Cream\*

\*Not included in the Glide thread kit.

## Part A Hooping Instructions

- Cut the **Wash-Away Stabilizer** larger than the embroidery hoop.
- Hoop the stabilizer only.
- Go to the Part A Embroidery Instructions.

## Part A Embroidery Instructions

### Embroidery File

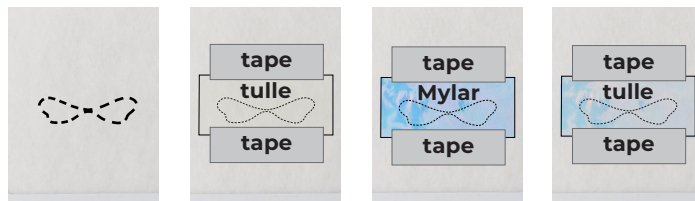
#### 4x4-april-part-a

4x4:  
1.00 x 3.32" or 25.3 x 84.3 mm  
3,736 stitches



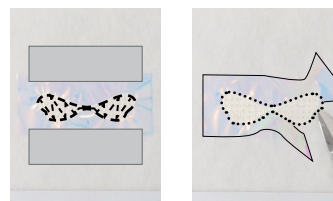
- Load the embroidery file into the machine.
- 1. Stitch the Dimensional Wings Placement Line.
- Place **(1)** Dimensional Wings Tulle. Tape in place.
- Place the Wings Shimmer Mylar, covering the tulle. Tape in place.
- Place the remaining **(1)** Dimensional Wings Tulle, covering the Mylar. Tape in place.

1



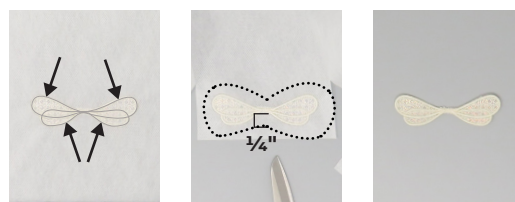
- 2. **Change the bobbin thread to match the top thread.** Stitch the Dimensional Wings Lace Mesh.
- Remove all of the tape. Trim the tulle and Mylar close to the stitch line.

2



- 3. Stitch the Dimensional Wings Satin Outlines.
- **Change the bobbin thread back to a neutral color.**
- Remove the project from the hoop.
- Trim the excess stabilizer at least ¼" away from the dimensional wings.
- Rinse the project in cool water to dissolve any remaining stabilizer. Lay flat to dry.
- Go to Part B Option 1 **or** Part B Option 2.

3



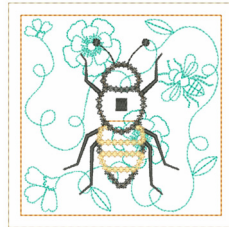
## Part B Option 1: Block-By-Block Quilting

- Hoop the **Light Mesh Cut-Away Stabilizer** only.



### Design

- ☑ kdq522-spring-7, 4x4 design  
4.50 x 4.50" or 114.4 x 114.4 mm



### Centered Alignment:

- Align the block embroidery file with the quilting design file so that both files are **centered**.
- Refer to the Block-by-Block Quilting Instructions on pages 9–10 in the **Tips and Tricks** PDF. Design and alignment information are listed above.
- After quilting, go to the Part B Embroidery Instructions.

## Part B Option 2: Hooping Instructions

(Refer to page 7 in the **Tips and Tricks** PDF.)

### Traditional Hooping:

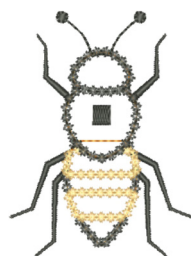
- Mark the **center** of the Background Fabric.
- Cut the **Medium Cut-Away Stabilizer** larger than the embroidery hoop.
- Tape the fabric to the **center** of the stabilizer.
- Hoop the stabilizer and fabric with the **center** mark in the **center** of the hoop.
- Go to the Part B Embroidery Instructions.



## Part B Embroidery Instructions

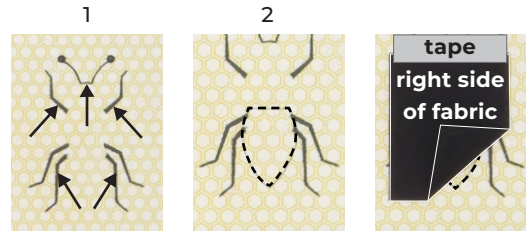
### Embroidery File 4x4-april-part-b

- ☑ 4x4:  
2.31 x 3.11" or 58.6 x 78.9 mm  
3,049 stitches



**Note:** The photos in these instructions feature the Block-by-Block Quilting Method. Both hooping options can be made using these instructions.

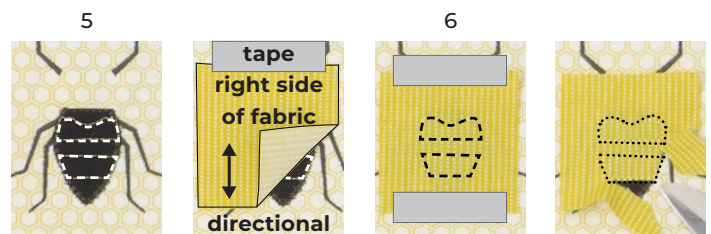
- ☑ 1. Stitch the Legs and Antenna Details.
- ☑ 2. Stitch the Abdomen Placement Line.
- Place **(1)** Body Fabric, **right side up**.



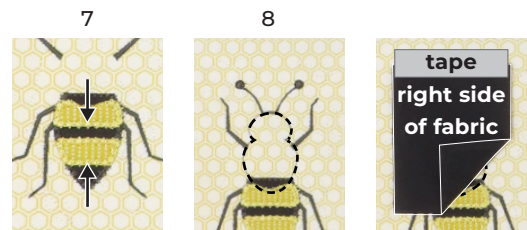
- ☑ 3. Stitch the Abdomen Tack-down Line.
- Trim the fabric close to the stitch line.
- ☑ 4. Stitch the Abdomen Decorative Outline.



- ☑ 5. Stitch the Stripes Placement Lines.
- Place the Stripes Fabric, **right side up**, with the striped print running **vertically** from the **top** to the **bottom**.
- ☑ 6. Stitch the Stripes Tack-down Lines.
- Trim the fabric close to the stitch lines.



- ☑ 7. Stitch the Stripes Decorative Outlines.
- ☑ 8. Stitch the Head and Thorax Placement Line.
- Place the remaining **(1)** Body Fabric, **right side up**.





- 9. Stitch the Head and Thorax Tack-down Line.
  - Trim the fabric close to the stitch line.
- 10. Stitch the Head and Thorax Decorative Outline.



- 11. Stitch the Dimensional Wings Placement Lines.
  - Orient the Dimensional Wings from Part A so that the **large** forewings are at the **top**.
  - Place the Dimensional Wings **right side up** as shown, with the **center** of the wings lying **on** the **vertical placement line** and between the **horizontal placement lines**. Tape in place **exactly** as shown.
- 12. Stitch the Dimensional Wings Tack-down Line.
  - Carefully remove the tape.
  - Remove the block from the hoop.



## Trimming Instructions

(Refer to page 8 in the **Tips and Tricks** PDF.)

- Place a 4½ x 4½" Orange Pop Ruler over the block.
- Visually center the design and square the block to 4½ x 4½".

