

michael miller FABRICS

Hen House

SIZE: 41"W x 53"H • LEVEL: CONFIDENT BEGINNER • PATTERN BY: PROJECT HOUSE 360



THIS IS A DIGITAL REPRESENTATION OF THE QUILT TOP, FABRIC MAY VARY.

PLEASE NOTE: BEFORE BEGINNING YOUR PROJECT, CHECK FOR ANY PATTERN UPDATES AT MICHAELMILLERFABRICS.COM'S FREE PROJECTS SECTION.

p.212.704.0774 | info@michaelmillerfabrics.com | www.michaelmillerfabrics.com



Hen House

1/4" Seam Allowance Check

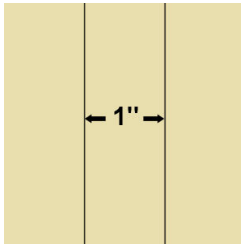
To check if your seam is accurate, cut three 1 1/2" x 3" pieces from scrap fabric.

Sew the pieces together along the 3" side, using what you believe is a 1/4" seam.

Press away from the center piece.

Measure.

The center piece should be exactly 1" wide.



If, when you measure, the center is less than 1", your seam allowance is too large. You need to move the needle to the right.

If it's more than 1", your seam allowance is too small and you need to move the needle to the left.

Consult your machine's owner's manual for instructions on moving your needle position.

Repeat this check until your center strip measures correctly.



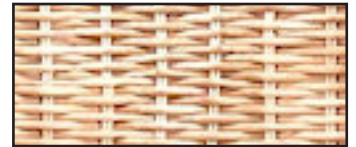
FABRIC A
DCX12071 multi
one full repeat



FABRIC B
DCX12072 toast
1/2 yard



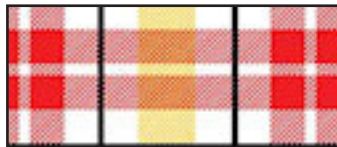
FABRIC C
DCX12073 straw
one full repeat



FABRIC D
DCX12072 straw
1/4 yard



FABRIC E
DCX12077 straw
2 yards



FABRIC F
DCX12076 butter
1/2 yard



BACKING
DCX12078 eggshell
2 3/4 yards

BATTING
49" x 62"



Hen House

KEY	CUTTING INSTRUCTIONS	WOF=width of fabric
A	(1) 20½" x 40½" fussy cut, centering on motif	
B	(5) 2" x WOF. Subcut: (3) 2" x 40½" rectangles and (2) 2" x 31" rectangles	
C	(4) 6½" squares fussy cut, centering on motif	
D	(1) 3¾" x WOF. Subcut: (5) 3¾" x 6½" rectangles	
E	(2) 5½" x 55" fussy cut on length of fabric, centering on motif (2) 5½" x 45" fussy cut on length of fabric, centering on motif	
F	(5) 2½" x WOF for binding	

Let's Begin!

1. Refer to assembly diagram on page 4 while assembling quilt.
2. Stitch four fabric C 6½" squares together with five fabric D 3¾" x 6½" rectangles. Strip should measure 6½" x 40½".
3. Stitch one fabric B 2" x 40½" rectangle to the left and right sides of the block strip.
4. Stitch one fabric A 20½" x 40½" rectangle to the left side of the block strip.
5. Stitch one fabric B 2" x 40½" rectangle to the left side of the quilt.
6. Stitch one fabric B 2" x 31" rectangle to the top and bottom of the quilt. Quilt should measure 31" x 43½".
7. Stitch one fabric E 5½" x 55" strip to the left and right sides of the quilt, preparing to miter corners.
8. Stitch one fabric E 5½" x 45" strip to the top and bottom of the quilt, mitering corners.

Finishing:

9. Layer, baste and quilt as desired.
10. Bind with five 2½" x WOF strips.

Hen House

Assembly Diagram

