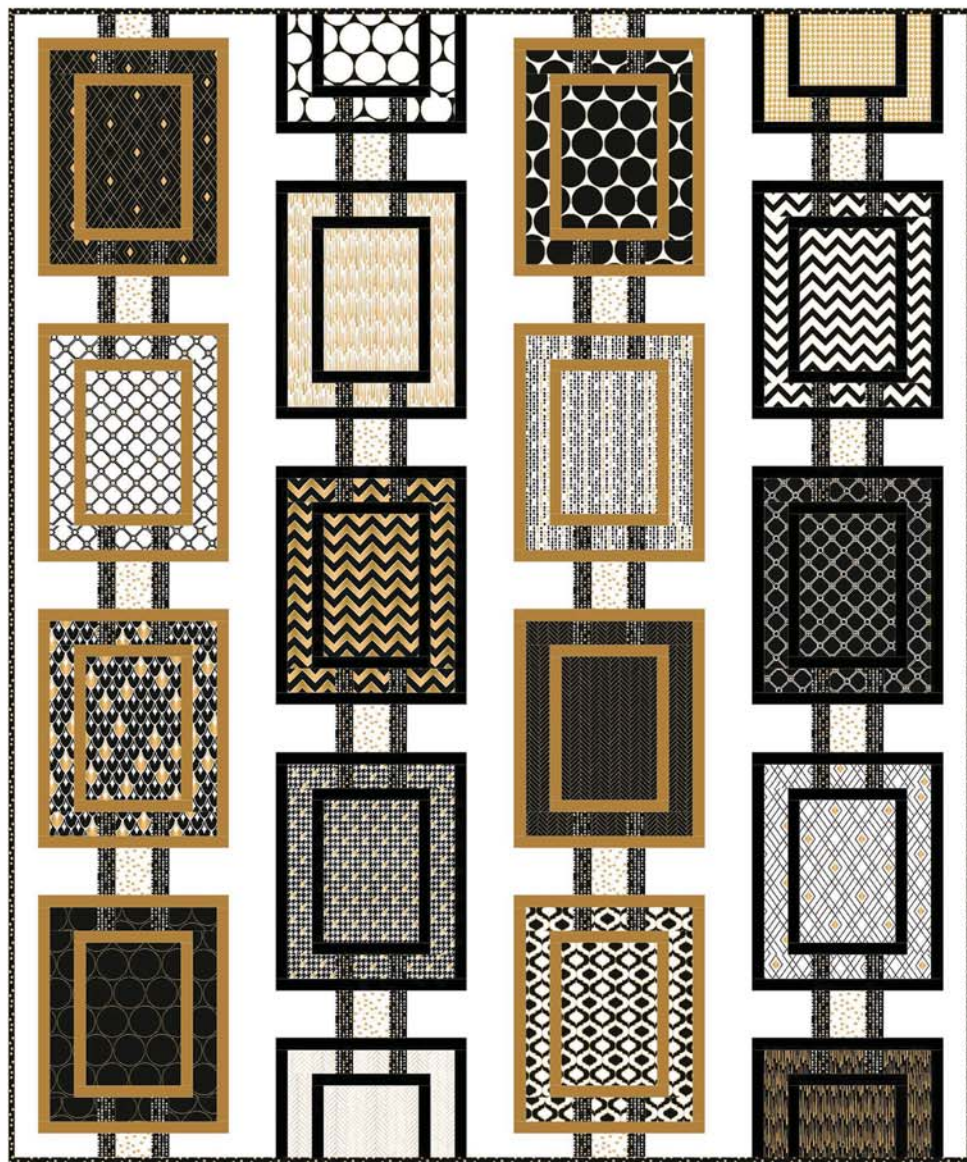




Framed Quilt (Q-002)



Fabric requirements



Fabric A
2141101 #1
Fat Quarter



Fabric B
2141101 #2
Fat Quarter



Fabric C
2141102
Fat Quarter



Fabric D
2141103 #1
Fat Quarter



Fabric E
2141103 #2
Fat Quarter



Fabric F
2141103 #3
Fat Quarter



Fabric G
2141104 #1
Fat Quarter



Fabric H
2141104 #2
Fat Quarter



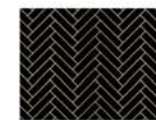
Fabric I
2141105 #1
5/8 yard



Fabric J
2141105 #2
Fat Quarter



Fabric K
2141106
Fat Quarter



Fabric L
2141107 #1
Fat Quarter



Fabric M
2141107 #2
Fat Quarter



Fabric N
2141108 #1
Fat Quarter



Fabric O
2141108 #2
Fat Quarter



Fabric P
2141109 #1
Fat Quarter



Fabric Q
2141109 #2
Fat Quarter



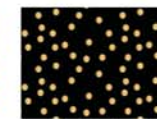
Fabric R
2141110 #1
Fat Quarter



Suggested Backing
2141109 #2
5-2/3 yards



Fabric S
2141110 #2
Fat Quarter



Fabric T
2141111 #1
2/3 Yard
(Binding)



Fabric U
2141111 #2
1/4 Yard

✿ Whirligig Designs ✿



Blog, Facebook, Twitter @CamelotFabrics
Pinterest, YouTube & Instagram @Camelot_Fabrics
camelotfabrics.com • camelotfabricsblog.com
Toll-Free: 1-800-361-4120 • 514-382-2400
info@camelotfabrics.com • www.camelotfabrics.com

Solids:
Fabric V: 214-0001 White - 2-1/8 yards
Fabric W: 214-0002 Black - 1-1/8 yard
Fabric X: 214-0005 Marigold - 1-1/4 yards

Finished Quilt Size: 81" x 97"

GENERAL INSTRUCTIONS

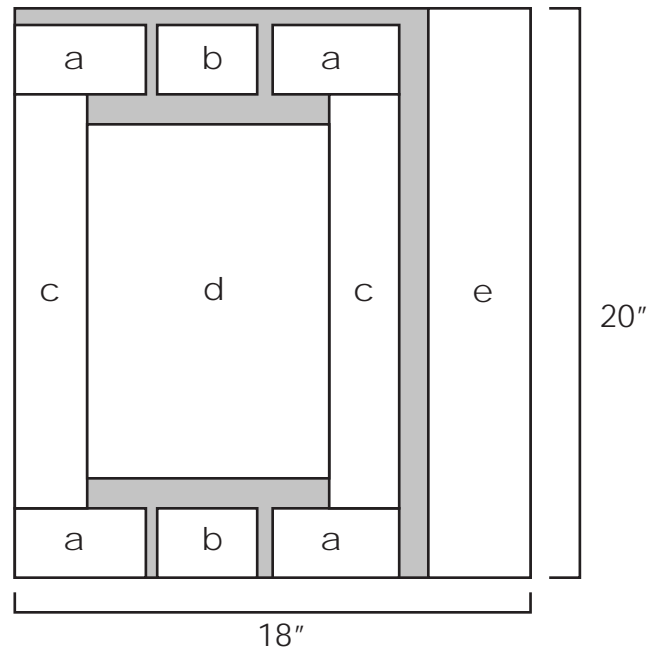
- For best results, read all directions before beginning.
- Use an accurate $\frac{1}{4}$ " seam allowance for all sewing.
- WOF means width of fabric.

CUTTING

Focus Prints – Fabrics A, B, C, D, F, G, H, J, K, L, N, P, Q and R:

From each of 14 fabrics, cut the following as shown in the diagram at right:

- 4 – $2\frac{1}{2}$ " x $4\frac{1}{2}$ " rectangles (a), 2 – $2\frac{1}{2}$ " x $3\frac{1}{2}$ " rectangles (b), 2 – $2\frac{1}{2}$ " x $14\frac{1}{2}$ " rectangles (c) and 1 – $8\frac{1}{2}$ " x $12\frac{1}{2}$ " rectangle (d) for full blocks.
- 1 – $2\frac{1}{2}$ " x 20" rectangle (e). Set aside for backing.



Fabric V:

Cut 4 – $5\frac{1}{2}$ " strips WOF. From strips, cut:

- 28 – $5\frac{1}{2}$ " x $4\frac{1}{2}$ " rectangles and 8 – $5\frac{1}{2}$ " x $2\frac{1}{2}$ " rectangles for sashing blocks.

Cut 8 – $4\frac{1}{2}$ " strips WOF for sashing strips.

Cut 5 – $2\frac{1}{2}$ " strips WOF for sashing strips.

Fabric W:

Cut 24 – $1\frac{1}{2}$ " strips WOF. From strips, cut:

- 12 – $1\frac{1}{2}$ " x $18\frac{1}{2}$ " rectangles, 16 – $1\frac{1}{2}$ " x $16\frac{1}{2}$ " rectangles, 12 – $1\frac{1}{2}$ " x $12\frac{1}{2}$ " rectangles, 16 – $1\frac{1}{2}$ " x $10\frac{1}{2}$ " rectangles, 8 – $1\frac{1}{2}$ " x $9\frac{1}{2}$ " rectangles and 8 – $1\frac{1}{2}$ " x $6\frac{1}{2}$ " rectangles.

Fabric X:

Cut 26 – $1\frac{1}{2}$ " strips WOF. From strips, cut:

- 16 – $1\frac{1}{2}$ " x $18\frac{1}{2}$ " rectangles, 16 – $1\frac{1}{2}$ " x $16\frac{1}{2}$ " rectangles, 16 – $1\frac{1}{2}$ " x $12\frac{1}{2}$ " rectangles and 16 – $1\frac{1}{2}$ " x $10\frac{1}{2}$ " rectangles.

Fabric U:

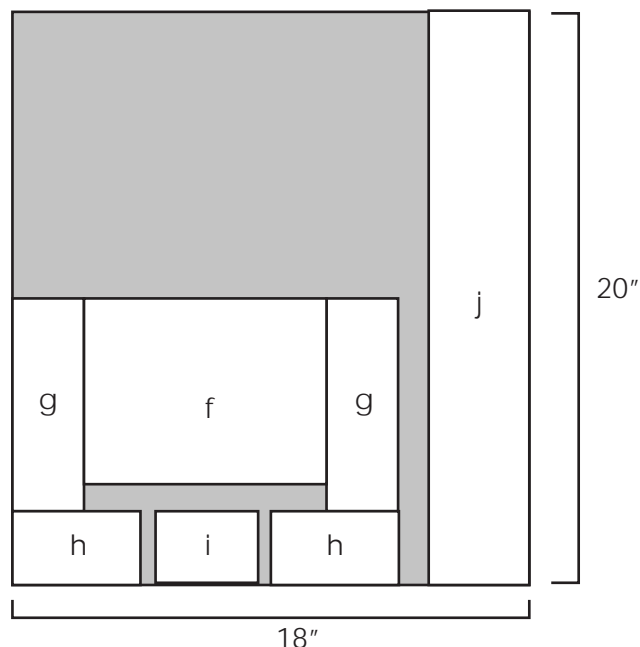
Cut 2 – $3\frac{1}{2}$ " strips WOF. From strips, cut:

- 14 – $3\frac{1}{2}$ " x $4\frac{1}{2}$ " rectangles and 4 – $2\frac{1}{2}$ " x $3\frac{1}{2}$ " rectangles for sashing blocks.

Focus Prints – Fabrics E, M, O and S:

From each of 4 fabrics, cut the following as shown in the diagram at right:

- 1 – 6 ½" x 8 ½" rectangle (f), 2 – 2 ½" x 7 ½" rectangles (g), 2 – 2 ½" x 4 ½" rectangles (h) and 1 – 2 ½" x 3 ½" rectangle (i) for half blocks.
- 1 – 2 ½" x 20" rectangle (j). Set aside for backing.



Fabric I:

Cut 2 – 4 ½" strips WOF. From strips, cut:

- 28 – 2" x 4 ½" rectangles for sashing blocks.

Cut 4 – 2 ½" strips WOF. From strips, cut:

- 72 – 2" x 2 ½" rectangles for blocks and sashing blocks.

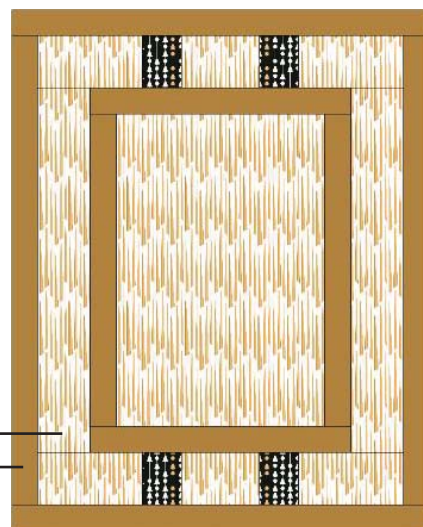
Fabric T:

Cut 9 – 2 ¼" strips WOF for binding.

PIECING

Full Blocks

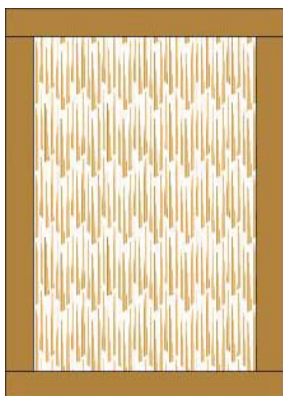
Each full block is made using one focus fabric, an accent fabric (either Fabric W or Fabric X) and 2" x 2 ½" Fabric I rectangles. Follow the instructions below to make 14 blocks in the combinations shown in the charts. Make 1 block of each combination.



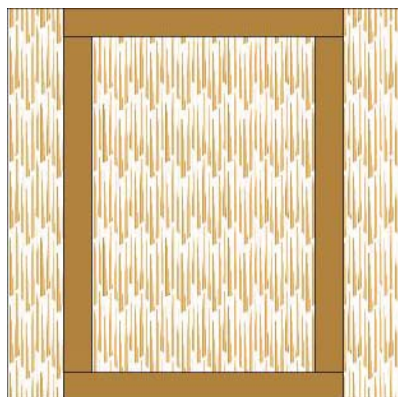
ACCENT	FOCUS
fabric X	fabric A
fabric X	fabric D
fabric X	fabric J
fabric X	fabric L
fabric W	fabric B
fabric W	fabric H
fabric W	fabric Q

ACCENT	FOCUS
fabric X	fabric C
fabric X	fabric F
fabric X	fabric K
fabric X	fabric P
fabric W	fabric G
fabric W	fabric N
fabric W	fabric R

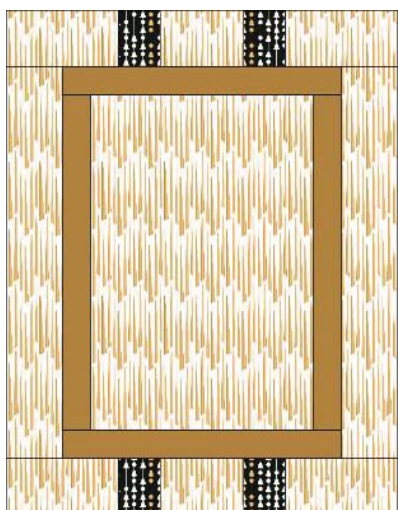
Unit 1



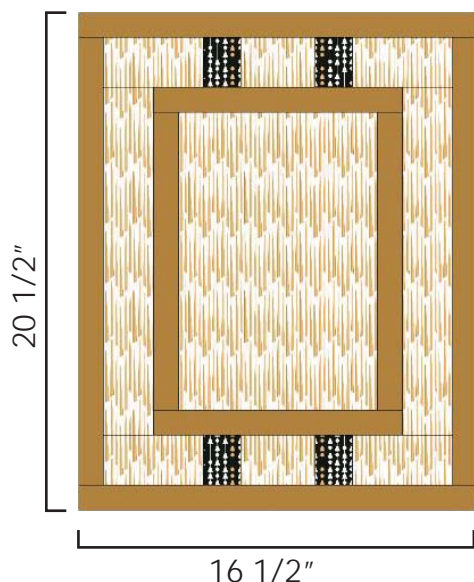
Sew a $1\frac{1}{2}$ " x $12\frac{1}{2}$ " accent rectangle to the sides of an $8\frac{1}{2}$ " x $12\frac{1}{2}$ " focus rectangle. Sew a $1\frac{1}{2}$ " x $10\frac{1}{2}$ " accent rectangle to the top and bottom of the focus rectangle to make Unit 1.



Sew a $2\frac{1}{2}$ " x $14\frac{1}{2}$ " focus rectangle to each side of Unit 1.



Sew 2 – $2\frac{1}{2}$ " x $4\frac{1}{2}$ " and 1 – $2\frac{1}{2}$ " x $3\frac{1}{2}$ " focus rectangles together with 2 – 2" x $2\frac{1}{2}$ " Fabric I rectangles as shown. Make 2 of these units and sew them to the top & bottom of Unit 1.



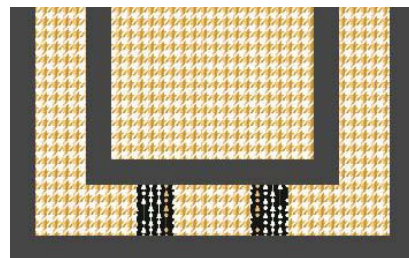
Sew a $1\frac{1}{2}$ " x $18\frac{1}{2}$ " accent rectangle to the sides of Unit 1. Sew a $1\frac{1}{2}$ " x $16\frac{1}{2}$ " accent rectangle to the top and bottom of Unit 1. Unfinished Full Block size is $16\frac{1}{2}$ " x $20\frac{1}{2}$ ".

Half Blocks

Each full block is made using one focus fabric, accent Fabric W (shown as grey in all diagrams) and 2" x 2 ½" Fabric I rectangles. Follow the instructions below to make 4 blocks in the combinations shown in the chart. Make 1 of each combination.

ACCENT	FOCUS
fabric W	fabric E
fabric W	fabric O

ACCENT	FOCUS
fabric W	fabric M
fabric W	fabric S



Sew a 1 ½" x 6 ½" accent rectangle to the sides of a 6 ½" x 8 ½" focus rectangle. Sew a 1 ½" x 10 ½" accent rectangle to the bottom of the focus rectangle to make Unit 2.

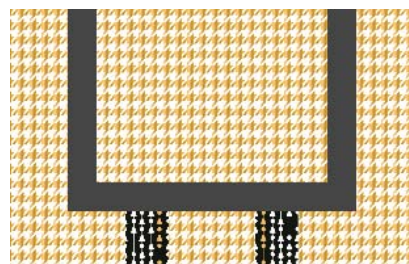
Unit 2



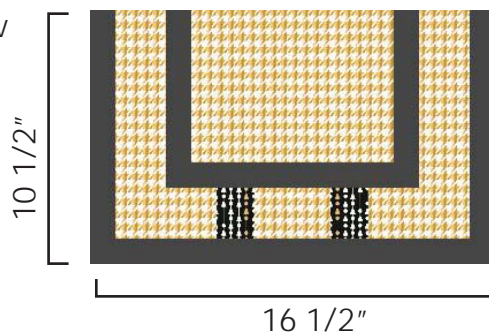
Sew a 2 ½" x 7 ½" focus rectangle to each side of Unit 2.



Sew 2 – 2 ½" x 4 ½" and 1 – 2 ½" x 3 ½" focus rectangles together with 2 – 2" x 2 ½" Fabric I rectangles as shown and sew them to the bottom of Unit 2.

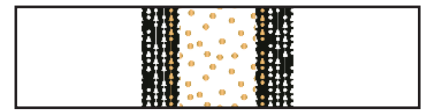


Sew a 1 ½" x 9 ½" accent rectangle to the sides of Unit 2. Sew a 1 ½" x 16 ½" accent rectangle to the bottom of Unit 2. Unfinished Half Block size is 16 ½" x 10 ½".



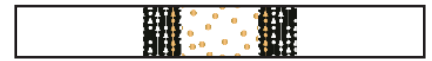
Sashing Blocks & Strips

Sew 2 – 5 ½" x 4 ½" Fabric V rectangles, 2 – 2" x 4 ½" Fabric I rectangles and a 3 ½" x 4 ½" Fabric U rectangle together as shown to make Unit 3. Make 14.



Unit 3

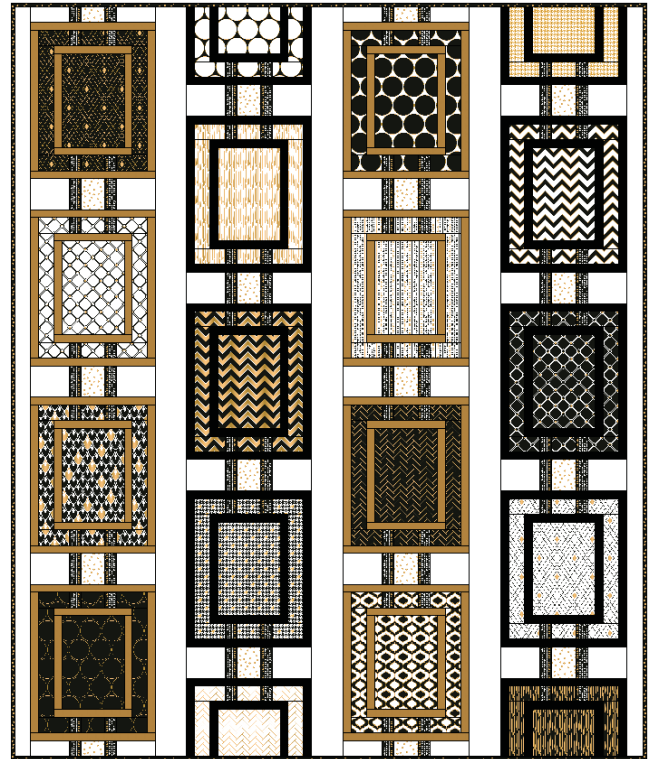
Sew 2 – 5 ½" x 2 ½" Fabric V rectangles, 2 – 2" x 2 ½" Fabric I rectangles and a 3 ½" x 2 ½" Fabric U rectangle together as shown to make Unit 4. Make 4.



Unit 4

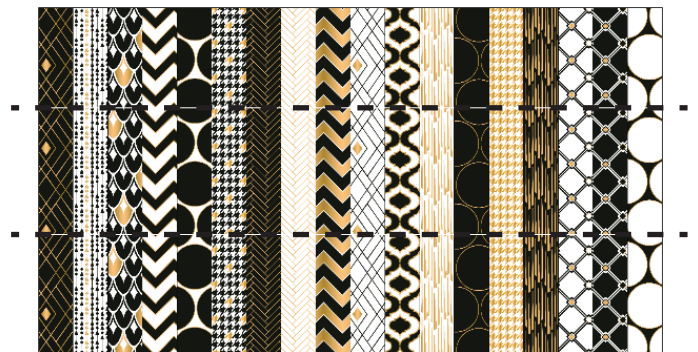
ASSEMBLY

- Arrange full blocks, half blocks and Units 3 and 4 in columns as shown. Sew the columns of blocks and units together.
- Sew the short ends of 4 ½" Fabric V strips together. Cut 3 sashing strips to 4 ½" x 96 ½". Sew a sashing strip between the columns of blocks.
- Sew the short ends of 2 ½" Fabric V strips together. Cut 2 sashing strips to 2 ½" x 96 ½". Sew a sashing strip to each outer side.



PIECING THE BACK

- Cut Backing fabric into two equal lengths (approximately 102").
- Sew 3" x 20" focus rectangles (set aside for backing) together as shown, in random order. Subcut strip set into 3 – 6 ½" segments and sew together end to end. Trim length to match backing fabric length.



- Sew pieced section between two Backing pieces for a fun back!
- Layer quilt top with batting and backing. Quilt as desired and bind with 2 ¼" Fabric T strips.

