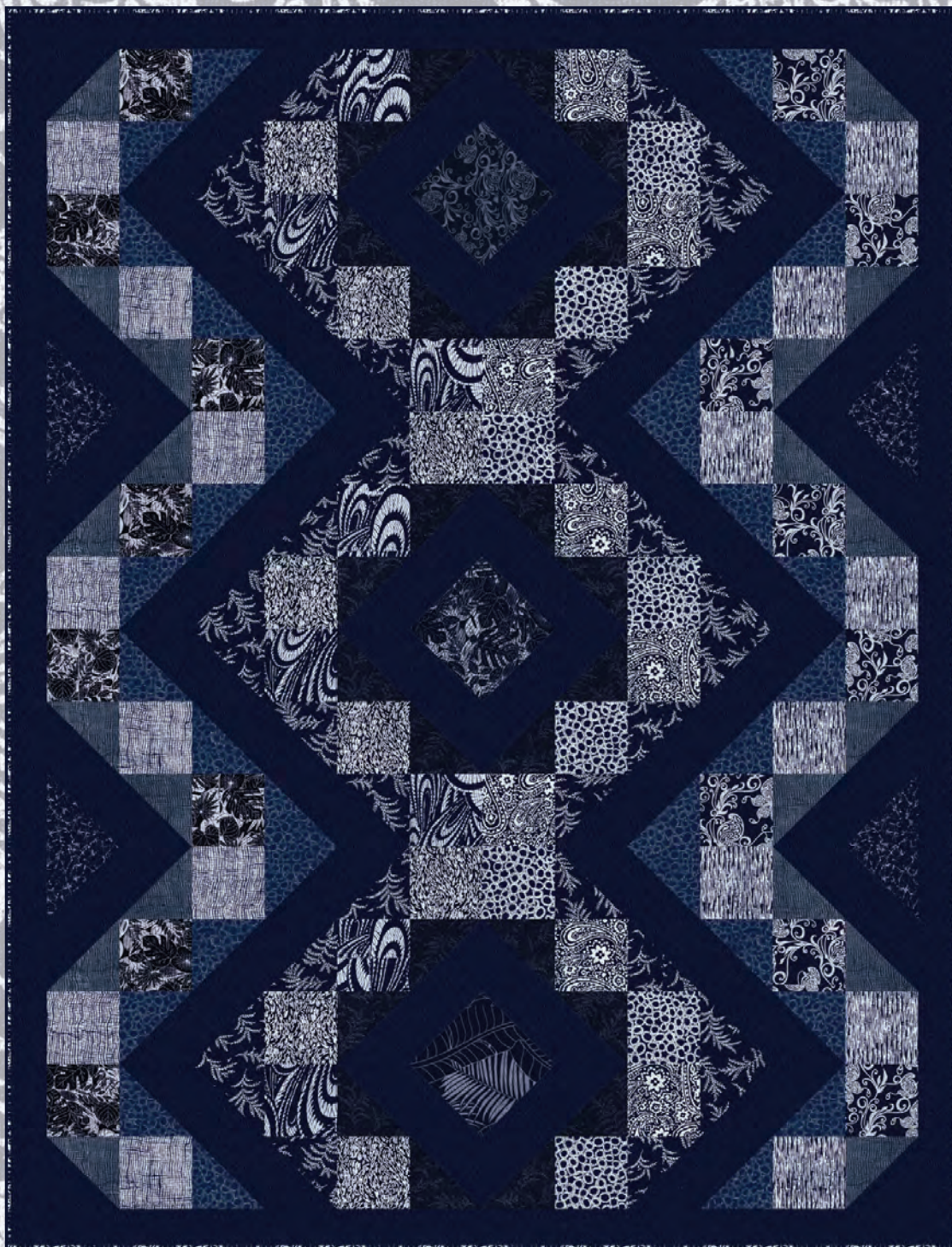


# INDIGO BLUES

Braid Quilt



A Free Project Sheet From



**Henry Glass & Co., Inc.**



facebook

Finished Quilt Size: 52" x 68"  
49 West 37th Street, New York, NY 10018  
tel: 212-686-5194 fax: 212-532-3525  
Toll Free: 800-294-9495  
[www.henryglassfabrics.com](http://www.henryglassfabrics.com)



# INDIGO BLUES

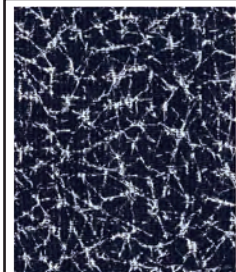
Finished Quilt Size: 52" x 68"

Braid Quilt

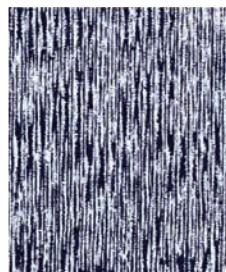
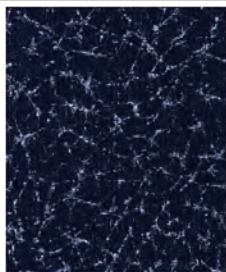
## Fabrics in the Collection



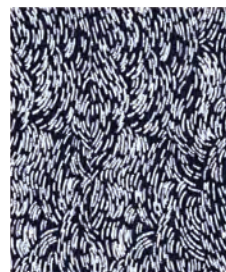
Solid Navy  
5000



5363/5363R  
Crackle



5361  
Wood Grain



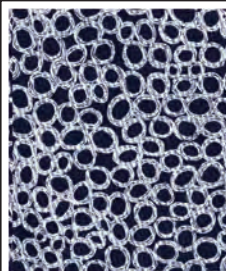
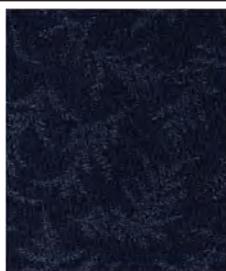
5113  
Brush Stroke



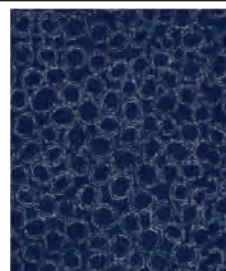
4953  
Lines & Vines



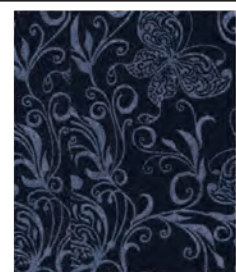
4950/4950R  
Sprigs



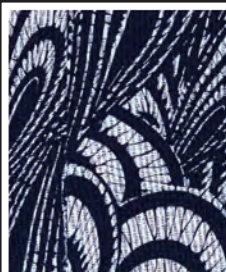
4946/4946R  
Rings



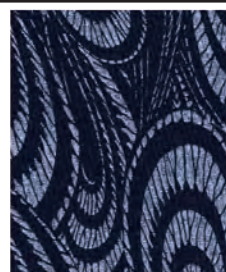
4942/4942R  
Butterflies



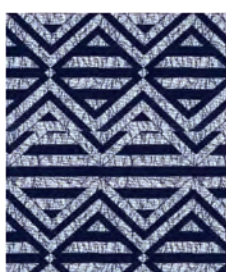
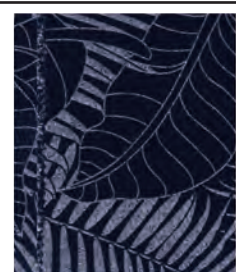
4675  
Paisley



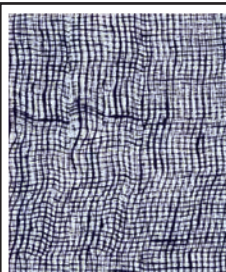
4336/4336R  
Waves



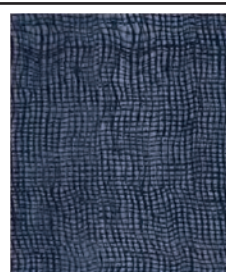
4334/4334R  
Large leaves



4247  
Chevrons



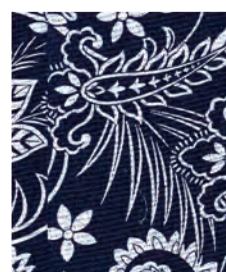
4173/4173R  
Grid



2305/2305R  
Tossed Leaves



4954  
Scroll Vines



4338  
Large Floral

# INDIGO BLUES

## Braid Quilt

## Page 1

### Materials

1 ¾ yards	Solid Navy	5000
⅓ yard	Tossed Leaves	2305
⅔ yard	Grid	4173
½ yard	Rings	4946
¼ yard	Crackle	5363
¾ yard	Sprigs	4950
¼ yard	Waves	4336
¼ yard	Brush Stroke	5113
¼ yard	Paisley	4675
⅓ yard	Butterflies	4942
¼ yard	Wood Grain	5361
¼ yard	Large Leaves	4334
½ yard	Lines & Vines	4953 (Binding)
3 ½ yards	Scroll Vines	4954 (Backing)

### Cutting Instructions

*Please note: all strips are cut across the width of fabric (WOF) from selvage to selvage edge unless otherwise noted as length of fabric (LOF).*

#### From the Solid Navy (A), cut:

- (8) 4 ⅞" x width of fabric (WOF) strips, sub-cut (64) 4 ⅞" squares.
- (3) 2 ½" x WOF strips; piece (2) 2 ½" x 52 ½" strips.
- (4) 2 ½" x WOF strips; piece (2) 2 ½" x 64 ½" strips.

#### From the Tossed Leaves (B), cut:

- (1) 4 ⅞" x WOF strip, sub-cut (2) 4 ⅞" squares.
- (1) 4 ½" x WOF strip, sub-cut (8) 4 ½" squares.

#### From the Grid (C), cut:

- (2) 4 ⅞" x WOF strip, sub-cut into (10) 4 ⅞" squares.
- (1) 4 ½" x WOF strip, sub-cut into (8) 4 ½" squares.

#### From the Rings (D), cut:

- (2) 4 ⅞" x WOF strips, sub-cut into (16) 4 ⅞" squares.
- (1) 4 ½" x WOF strip, sub-cut into (8) 4 ½" squares.

#### From the Crackle (E), cut:

- (1) 4 ⅞" x WOF strip, sub-cut into (4) 4 ⅞" squares.

#### From the Sprigs (F), cut:

- (4) 4 ⅞" x WOF strips, sub-cut into (32) 4 ⅞" squares.

#### From the Waves (G), cut:

- (1) 4 ½" x WOF strip, sub-cut into (8) 4 ½" squares.

#### From the Brush Stroke (H), cut:

- (1) 4 ½" x WOF strip, sub-cut into (8) 4 ½" squares.

#### From the Paisley (I), cut:

- (1) 4 ½" x WOF strip, sub-cut into (8) 4 ½" squares.

#### From the Butterflies (J), cut:

- (1) 4 ⅞" x WOF strip, sub-cut into (2) 4 ⅞" squares.
- (1) 4 ½" x WOF strip, sub-cut into (8) 4 ½" squares.

#### From the Wood Grain (K), cut:

- (1) 4 ½" x WOF strip, sub-cut into (8) 4 ½" squares.

#### From the Large Leaves (L), cut:

- (1) 4 ⅞" x WOF strip, sub-cut into (2) 4 ⅞" squares.

#### From the Lines & Vines (Binding), cut:

- (6) 2 ½" x WOF strips for the binding.

#### From the Indigo (Backing), cut:

- (2) 60" x WOF strips. Piece the strips together and trim to make one 60" x 76" piece for the backing.



# INDIGO BLUES

## Braid Quilt

## Page 2

**NOTE:** In some cases the reverse side of the fabrics will be used and actually be the “right” side. These are denoted by an “R” following the fabric letter and are in bold (i.e. Fabric **BR**). Some fabrics will be used both normally and reversed.

### Sewing Instructions

1. Place one  $4\frac{7}{8}$ ” Fabric **CR** square on top of one  $4\frac{7}{8}$ ” Fabric A square, right sides together (*see note above*). Draw a line across the diagonal of the top square (Fig. 1). Sew  $\frac{1}{4}$ ” away from each side of the drawn diagonal line (Fig. 1). Cut the two squares apart on the drawn diagonal line (Fig. 2) to make two **CR/A** units (Fig. 3). Trim **CR/A** units to measure  $4\frac{1}{2}$ ” square. Repeat to make twenty  $4\frac{1}{2}$ ” **CR/A** units total.



Fig. 1



Fig. 2



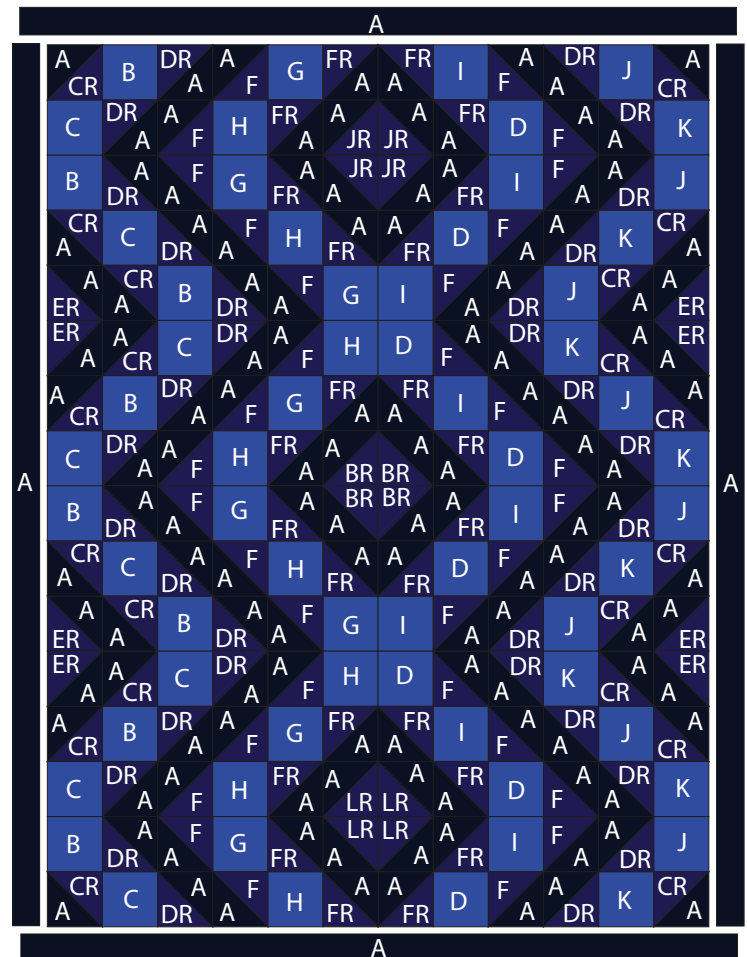
Fig. 3

2. Repeat Step 1 using two  $4\frac{7}{8}$ ” Fabric **BR** squares and two  $4\frac{7}{8}$ ” Fabric A squares to make four  $4\frac{1}{2}$ ” **BR/A** units total.
3. Repeat Step 1 using sixteen  $4\frac{7}{8}$ ” Fabric **DR** squares and sixteen  $4\frac{7}{8}$ ” Fabric A squares to make thirty-two  $4\frac{1}{2}$ ” **DR/A** units total.
4. Repeat Step 1 using four  $4\frac{7}{8}$ ” Fabric **ER** squares and four  $4\frac{7}{8}$ ” Fabric A squares to make eight  $4\frac{1}{2}$ ” **ER/A** units total.
5. Repeat Step 1 using sixteen  $4\frac{7}{8}$ ” Fabric F squares and sixteen  $4\frac{7}{8}$ ” Fabric A squares to make thirty-two  $4\frac{1}{2}$ ” F/A units total.
6. Repeat Step 1 using twelve  $4\frac{7}{8}$ ” Fabric **FR** squares and twelve  $4\frac{7}{8}$ ” Fabric A squares to make twenty-four  $4\frac{1}{2}$ ” **FR/A** units total.
7. Repeat Step 1 using two  $4\frac{7}{8}$ ” Fabric **JR** squares and two  $4\frac{7}{8}$ ” Fabric A squares to make four  $4\frac{1}{2}$ ” Fabric **JR/A** units total.
8. Repeat Step 1 using two  $4\frac{7}{8}$ ” Fabric **LR** squares and two  $4\frac{7}{8}$ ” Fabric A squares to make four  $4\frac{1}{2}$ ” Fabric **LR/A** units total.

### Quilt Top Assembly

(Refer to the Quilt Layout while assembling.)

9. Sew the (128) half square triangles and various sixty-four  $4\frac{1}{2}$ ” squares together to make the quilt top.
10. Sew one  $2\frac{1}{2}$ ” x  $64\frac{1}{2}$ ” Fabric A strip to each side of the quilt top. Sew one  $2\frac{1}{2}$ ” x  $52\frac{1}{2}$ ” Fabric A strip to the top and bottom of the quilt top.
11. Layer and quilt as desired.
12. Sew the six  $2\frac{1}{2}$ ” x WOF binding strips together, end to end with  $45^\circ$  seams, to make the binding. Fold this long strip in half lengthwise with wrong sides together and press.
13. Bind as desired.



Quilt Layout