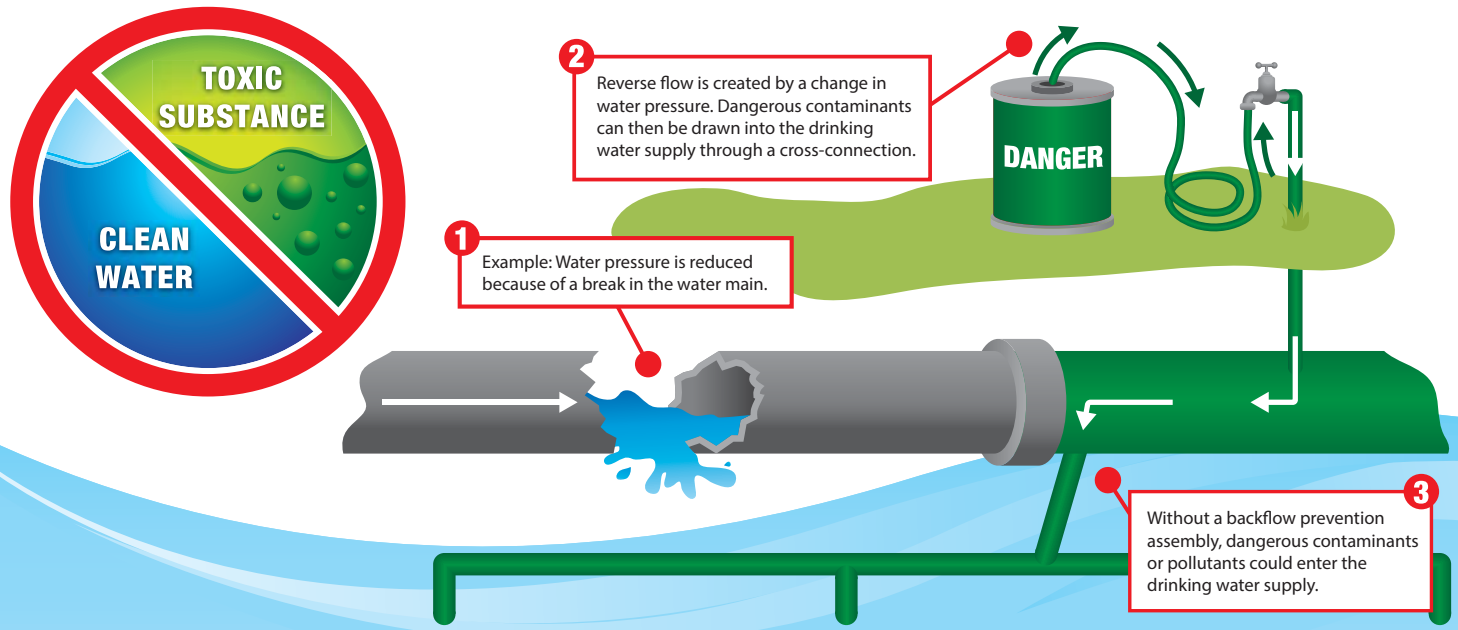


YOUR ROLE IN PROTECTING OUR WATER SUPPLY FROM CROSS-CONNECTIONS AND BACKFLOW



Brigham City has a vigilant water quality monitoring program and regularly performs sampling citywide. The City consistently meets all state and federal safety standards for providing clean and safe drinking water.

Once water flows from the distribution system, our customers also play an important role in assuring that our water supply remains free of contamination.

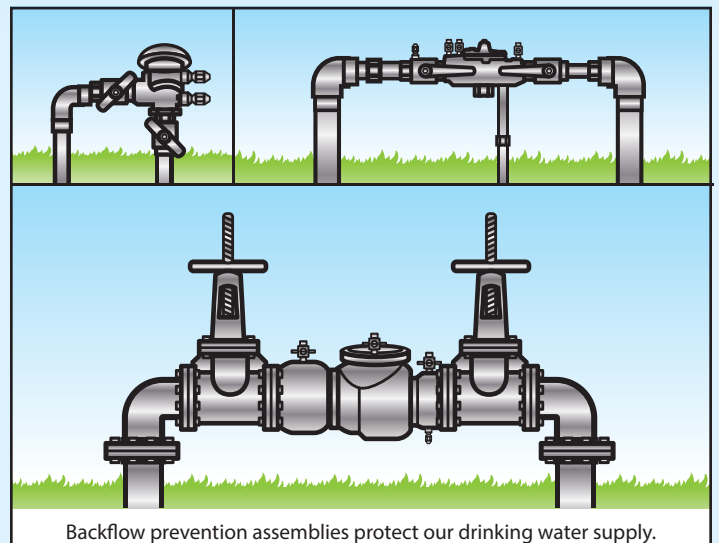
Property owners are responsible for preventing contaminants and pollutants from entering the water distribution system. Any contaminant or pollutant sources linked to a property owner's water supply can potentially present a hazard to the integrity of the City's water supply.

Brigham City's Code 28.01.170 Cross Connection Control and Backflow Prevention requires that public utilities take measures to protect their systems from cross-connections and backflow. Maintaining a strong cross connection control plan is essential to safeguarding the public water supply

The City is mandated to inspect and monitor certain properties to ensure compliance with cross-connection and backflow prevention requirements.

Based on state guidelines, the City is currently identifying and surveying properties with potential hazards.

If it is determined that a backflow prevention assembly is needed, property owners will be notified by mail requesting compliance. Existing and new backflow prevention assemblies must be tested annually and also after repairs or if devices are relocated.



Backflow prevention assemblies protect our drinking water supply.

Illustrations by Joshua Smith, City of Fort Lauderdale

FREQUENTLY ASKED QUESTIONS

What if I don't comply with local, state and federal mandates?

Your water service will be terminated to protect the public water system.

What is a cross-connection?

Cross-connection refers to any actual or potential physical connection between a potable water line and any pipe, vessel or machine containing a non-potable fluid or has the possibility of containing a non-potable fluid, solid or gas that could potentially enter the potable water system by backflow.

What is backflow?

Backflow is the undesirable reversal of flow of water, liquids, mixtures or substances into the public water distribution pipe system from any source or sources.

When might backflow occur?

Inadequate plumbing and events such as water main breaks or fire hydrant use can contribute to backflow conditions. Backflow may also occur when pressure in the property owner's equipment is greater than the pressure in the drinking water line.

What is a backflow prevention assembly?

Backflow prevention assemblies are designed to prevent contaminated water or chemicals from a property flowing back into the public drinking water supply system.

Why are backflow prevention assemblies required?

Backflow prevention assemblies are an important component of the City's drinking water protection program and are legally mandated under UTah rules for those water service lines identified as posing a risk to the public water supply.

Who is affected?

Certain types of businesses or service connections are legally mandated to install and operate approved backflow prevention assemblies. Examples include drycleaners, car washes, restaurants, barber shops and beauty salons, auto repair shops, funeral parlors, medical offices, and contractors. Buildings greater than four stories, fire, and irrigation services are also required to have a backflow prevention assembly.

What is the cost of backflow prevention assemblies?

Installation costs vary depending on the assembly and selected licensed plumbers' labor costs. The investment to install and maintain the assembly is minimal compared to the potential public safety hazard and liability of a backflow incident. It is a State requirement in order to protect the potable water supply for everyone.

Who can install and test a backflow prevention assembly?

Backflow prevention assemblies may only be tested or installed by a certified backflow technician. A list of local certified backflow technicians may be obtained from the City's Public Works Administrative Offices by dialing 435-734-6615.

Property owners shall notify the City before altering or adding new devices to the plumbing system to help reduce cross-connection:

Brigham City Public Works
980 W. Forest Street
Brigham City UT 84302

Phone: 435-734-6615

