

# Serged Patches

# JACKET

BY JO LEICHTE



*By making a few simple changes to Great Copy's wonderful "Pieced Jacket" pattern, the construction process is streamlined, and nearly all of the stitching can be accomplished on a serger rather than a sewing machine. In addition, cutting the jacket back pattern piece into four panels creates an even "piece-ier" project, and making the button loops from Ultrasuede™ makes them durable and simple to construct.*

## Supplies

- BERNINA® Serger
- BERNINA® Sewing Machine
- Pieced Jacket #810 by Great Copy Patterns
- Four (or more)  $\frac{3}{4}$  yard lengths of coordinating fleece prints or solids
- 4" x 7" rectangle Ultrasuede™ (or  $\frac{1}{16}$  yard, or assorted scraps)
- Two spools YLI Woolly Nylon in color(s) to coordinate with fleece
- Size 80/12 Universal needles
- Four large buttons (1" to 1 $\frac{1}{4}$ " diameter)
- Pattern tracing paper
- Edgestitch Foot #10/10C
- Button Sew-On Foot #18

## Serger Set Up

*While the pattern instructions call for jacket to be seamed with a serged overlock stitch, all of the stitching in this variation – both seams and edges – is sewn using a wide two-thread flatlock. This eliminates the need to switch back and forth between the serger and sewing machine, and creates a very flat, non-bulky seam. The only exceptions are the button loops and buttons – there are still some things that a serger just can't do!*

### Wide Two-Thread Overlock

Upper Looper	Woolly Nylon, tension = 1-2
Lower Looper	Woolly Nylon, tension = 1-2
Right Needle	Removed
Left Needle	Woolly Nylon, tension = 6-8

Stitch Length = 2.5-4mm

Cutting Width = 1.5-2

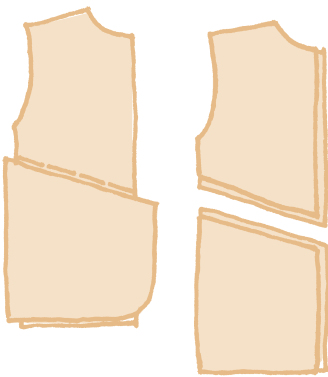
Differential Feed = as needed

## Preparation

Determine jacket size using chart included with pattern. Trace the sleeve, collar, and upper and lower front pattern pieces.

Create New Back Pattern Pieces: Place traced lower front piece over the lower edge of the back piece, then trace upper angled edge onto back pattern piece. Trace the new upper and lower pattern pieces, adding  $\frac{1}{4}$ " seam allowances to the center back and to the newly created angled edges.

Decide which color fleece will be used for each section of the jacket. *TIP: Make several photocopies of the jacket line art, then experiment with different arrangements using crayons or pencils.*

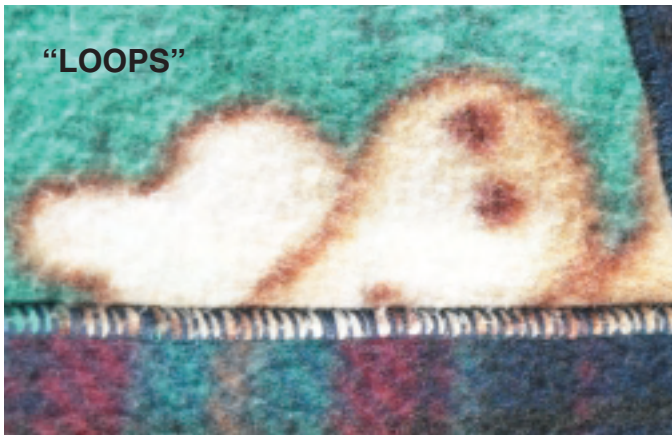


Cut pattern pieces from fleece, being sure to *cut both right and left front and back pieces*. Cut two collar pieces – a double layer collar has more body than a single layer.

Cut four 1" x 4" strips of Ultrasuede™ for the button loops. Cut four  $1\frac{1}{8}$ " x  $1\frac{1}{8}$ " squares of Ultrasuede™ to cover tab ends.

## Jacket Construction

Before serging seams, determine which portion of the flatlock – “ladders” or “loops” – will appear on the right side of the jacket. Place fleece right sides together for “ladders”, wrong sides together for “loops”.



Place two collar pieces wrong sides together, matching the raw edges along the inner edge. Pin through the center of the collar to avoid serging through pins. Treat as one piece of fabric. When serging around the outer edges of the jacket, shift the under collar slightly so that it extends  $\frac{1}{8}$ " beyond the upper collar and trim the excess fabric when serging around the collar.

Follow the pattern directions for View B, steps 1 through 6, substituting a wide 2-thread flatlock for the overlock stitch. After serging each seam, open the flatlock stitching by gently pulling the fabric along each side. When serging the outer edges of the

jacket, increase the differential feed to 1.5-2 at curves, serging slowly and smoothly.

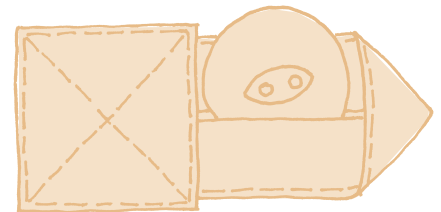


## Buttons & Loops

Thread sewing machine with thread to coordinate with fabric. Fold each 1" x 4" strip of Ultrasuede™ in half lengthwise. Attach Edgestitch Foot #10/10C, select straight stitch, and move the needle slightly to one side. Stitch along the long raw edges of each strip. Fold as shown in View A, step 5.

Determine loop opening by slipping a button through the loop; mark the location for the end of the loop. Pin loops in place along the right side of the jacket front, placing the marked ends of the loops  $\frac{1}{4}$ " from the finished edge. Place a  $1\frac{1}{8}$ " x  $1\frac{1}{8}$ " square of Ultrasuede™ over the raw ends of the loop, one straight edge  $\frac{1}{4}$ " from the finished edge. Using Edgestitch Foot #10/10C, edgestitch around each square. If desired, stitch an “X” in the center of each square.

Adjust the pin in the center of Button Sew-On Foot #18 to its highest position. Sew buttons in place on the remaining front edge of the jacket



using a button sew-on stitch (or a universal stitch with a length of 0mm). *Note: Some large buttons have a bigger-than-normal space between eyes; adjust stitch width as necessary so that needle stitches into the eyes.*



## Resources

Pieced Jacket  
#810 Great Copy patterns  
[www.greatcopy.com](http://www.greatcopy.com)

*Serger Technique Reference Book*  
available at your local  
BERNINA® dealer  
[www.berninausa.com](http://www.berninausa.com)



## Variations on a Theme

Substitute braided cord for the Ultrasuede™ button loops, and use squares of fleece to cover the raw ends. For an “unpieced” version, overlap upper and lower jacket front pattern pieces  $\frac{1}{2}$ ”; tape together. (Overlapping the pieces  $\frac{1}{2}$ ” eliminates the  $\frac{1}{4}$ ” seam allowances needed for piecing.) Cut sleeves on the fold, marking the center/fold line  $\frac{1}{2}$ ” from the edge of the center seam.

Completely different looks are achieved depending on fabric selections: solids and subtle prints in related colors create a calm, pretty effect, while bright colors and wild prints create excitement.



This colorful coffee cup quilt kit, featuring Glacier Park Splash and Ombre Stripes and Java Galaxy pattern by “I Wanna Quilt”, is available in fine quilt shops everywhere.

[www.benartex.com](http://www.benartex.com)

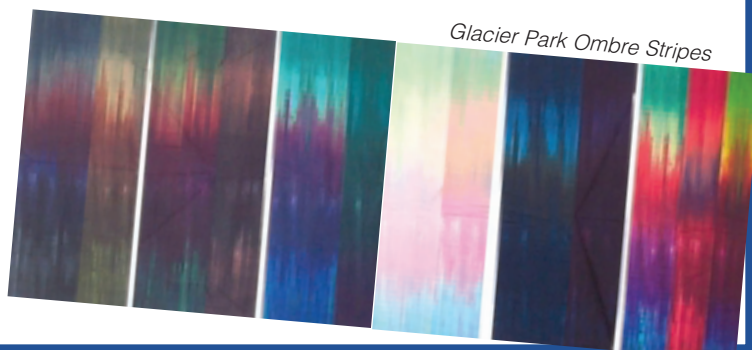
Presenting a  
spectacular new Benartex  
fabric collection

## Glacier Park

Using the sky, mountains,  
stones, and leaves of Glacier Park  
as her inspiration,

## Caryl Bryer Fallert

AQS Best of Show award  
3-time winner, has created a  
spectacular collection with the look  
of genuine hand-dyed fabrics.



Glacier Park Ombre Stripes