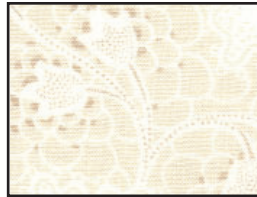




Fabric Requirements

Pearl P. Pereira

Copyright © 2021

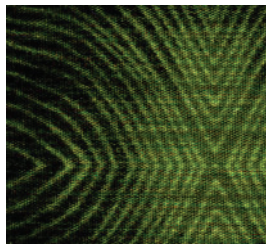


13" x 13"
background fabric

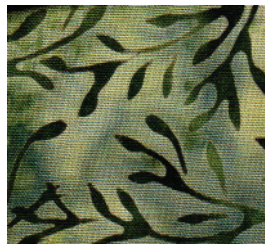
**If you will be making the whole quilt you will need 4 1/2" yards for background fabric.



12" x 12" sq.
Wood bark fabric



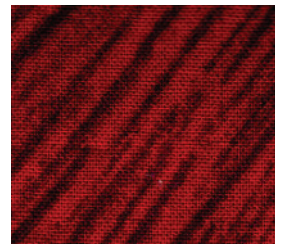
5" x 5" sq.
Dark green for leaves



5" x 5" sq.
Med. green for leaves



4" x 4" sq.
Lt. green for leaves



3" x 3" sq.
Red for apple



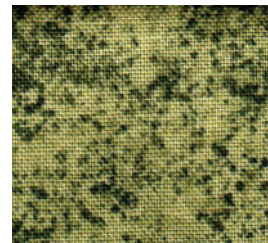
2" x 2" sq.
Lt green for snail body



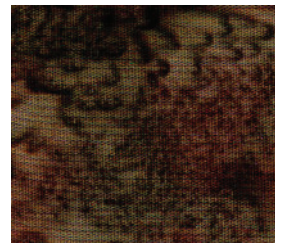
2" x 2" sq.
Greenish brown for snail shell



2" x 2" sq.
Lt green for frog head



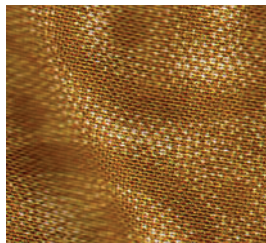
2" x 2" sq.
Med. green for frog head Legs



6" x 6" sq.
Dark brown for raccoon tail & body



6" x 6" sq.
Med. brown for raccoon face



8" x 8" sq.
Med. brown for raccoon arms, ears & tail



4" x 4"
Lt. tan for raccoon face



3" x 3" sq.
Charcoal gray for raccoon mount and ears



2" x 2" sq.
black Ultrasuede Light for eyes & nose



Basic Supply list

Supplies: Each Student must have their own iron, ironing mat and extension cord. Bring a personal light if you need extra lighting and small light box if you like using one.

- Pencil
- Black and Red Extra Fine Point Sharpie pens for tracing and marking templates
- Off-The-Block Applique Book
- Irons – Small Travel size Iron for ironing templates and large shape
Cheri's Cool Tool iron for working with small shapes
- Ironing mat
- Appliqué Stiletto and Appliqué Pressing Tool
- P3 Designs Ultimate Appliqué Template Paper
- Fiskars small Curved Scissors for cutting templates
- Sharp fabric scissors
- 27" x 27" square, 1/4" thick foam core board or the size of your project
(Used to mount and transport home your project)
- Parchment Paper the kind you bake with large enough to cover your foam core board
- 3/4" Bohin applique pins
- Bohin Brush Water Brush for spray starch available on www.p3designs.com
- Roxanne's Glue Baste It
- Applique Pressing Sheet 13" x 17" for pressing freezer paper
- Niagara Non-Aerosol Spray Starch and small container
- 1"8" or 1/4" stencil brush
- Travel size rotary cutter & mat (5 1/2" x 8 1/2") or your favorite size
- Hot Iron Cleaner - Optional but you may need to clean your iron
- .005 Red and Black Pigma pens
- Personal power strip or extension cord
- Thimble
- P3 Designs Straw Needle #11 or your favorite appliqué needle
- Your favorite appliqué thread to match fabrics, I like Superior Threads Kimono # 100 Silk threads

Pattern & freezer paper templates fee \$10.00

Pearl P. Pereira
pearl@p3designs.com
www.p3designs.com