

Floral Wreath Wall Hanging

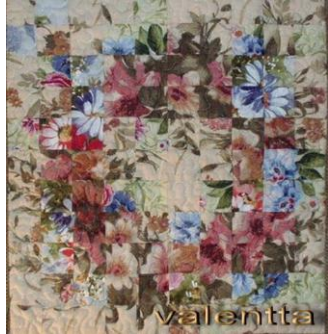
Sat. March 16, 2019

10:30 am – 3:00 pm

With Susan M. Arrow

Class Fee + \$15.00 Kit Fee

Samples of finished watercolor quilts to give you an idea of what kinds of fabrics you will need:



Supplies Needed

Notions and other supplies:

- Pattern for Floral Wreath (to be purchased in class) includes:
 - **Pattern Layout for Floral Wreath**
 - **Fabric Auditioning template**
 - **Instructions for chain pining, pressing and sewing pieces**
 - **Each kit is \$15.00 (in addition to the cost of the class) Fabric not included.**
- **Straight pins or safety pins. Should be at least 1-1/2" long.** ✓
- Pen and pencil
- Scotch tape or masking tape (1" wide)
- Batting (light weight cotton, or poly)
- Color Wheel or Color Tool ✓
- Small cutting mat ✓
- 45mm and 28mm rotary cutters. ✓
- 24" Straight edge ruler ✓
- Embroidery or other sharp cutting scissors (3-4" blade) and larger sewing shears. ✓
- Post It Notes to label each piece to keep design in order.
- 2 1/2" X 2 1/2" Omnigrid (or other brand) Acrylic/Plastic Ruler. ✓
- Small binocular (optional).

Machine & Accessories

- Sewing machine in good working order with manual and accessories (optional). Sewing machine used for last 1 hour of class, if you want to. Main content of class is designing. ✓
- Walking Foot for your machine. ✓
- Needles (90 Microtex Top Stitching or Quilting needles) ✓

Threads:

- High quality thread. Primary Thread: White thread for white background quilt. Black thread for black background quilt. ✓
- Bobbins filled with white or black thread. ✓

Fabric Recommendations:

There is no need to pre-wash fabrics.

Floral Prints

- Look for 4-6 floral fabrics with either white or black background (1/2 to 1 yd. each). You can use one or the other, but not both in the same quilt.
- Select large, medium and small print flowers with space around them. There should be one or two fabrics that should contain leaves and stems.
- Background fabric around flowers - 1yd fabric either light or dark
- Border fabric (approximately 3/4yard)
- Backing fabric (approximately 3/4 yard or a few inches larger than foundation fabric)
- Binding fabric (approximately 3/4 yard)

TIPS

Be sure to pick light to dark values, to make it “pop”. Keep your flower styles consistent. Realistic or impressionistic.

Please email me if you have any questions at Marciarow@yahoo.com

Looking forward to seeing you!!