

# *My* **BERNINA**

## Sewing Machine Workbook 3



## **Creative Options**

For BERNINA 8 Series, models 780, and 580  
(Pages 1-8 also apply to models 710 & 750QE)

Setup Program.....	3
Personal Program.....	5
Long Stitch.....	7
Tapering Stitches .....	8
Multi-Directional Stitching .....	9
Free-Form Directional Stitching .....	10
All-Over Directional Stitching: Twisted Scrolls (BERNINA 830 & 780 only).....	11
Monograms .....	12
BERNINA 580 Functions.....	13
BERNINA 710 Functions.....	14
BERNINA 750 QE Functions.....	15
BERNINA 780 Functions.....	16
BERNINA 820 Functions.....	17
BERNINA 830 Functions.....	18
Machine Features and Functions Chart .....	19
Presser Foot Chart .....	20



Welcome to your third and final sewing machine class in the My BERNINA series. By now, you are familiar with the basics of operating your machine and are ready to get into some of the unique features and functions that made you want your model in the first place. The information and stitching exercises in this book address the special features, functions, & techniques you can sew with the BERNINA 580, 780 & 8 Series models.



## Opening Screen of Setup Program

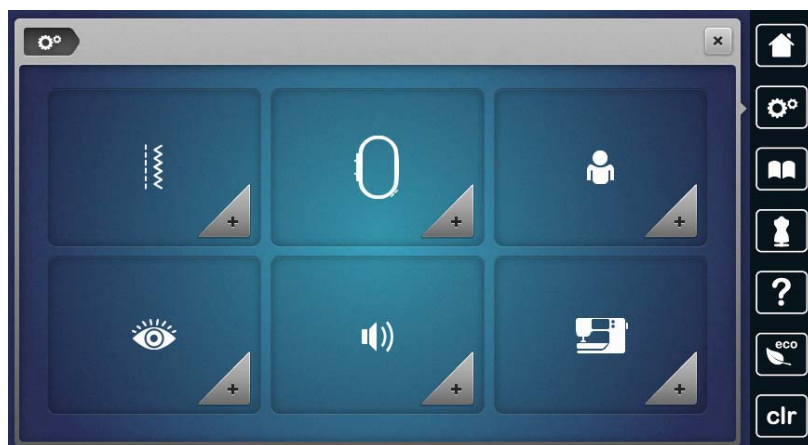
The Setup program allows you to customize the settings of your machine beyond the temporary adjustments that can be made as you sew. The changes made in Setup are saved and will remain until you change them again, even when the machine is turned off or disconnected. Changes made to the factory settings can be easily reset and the machine restored to the original settings by touching the icons shown below for each model.



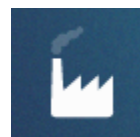
**580**

**750 QE**

**710 (without the embroidery icon)**



**780**



**820 (without the  
embroidery icon)**

**830**





## Frequently Used Setup Functions

The following icons represent the most frequently accessed functions in the Set-up Program. This quick-reference chart will get you to the right place simply by touching the Set-up icon (see above right), & then touching the icons shown below.

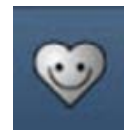
	830	820	780	750 QE	710	580
Wallpaper						
Updating						
Turn off Security Stitches						
Turn off Alarms						
Hoop Calibration		---			---	
Hover				---	---	---

## HELP Function

There are other functions that can be set or reset using the Setup Program. Consult the manual and/or the Help feature for more information. Help provides an on-screen explanation of functions, designs, knobs, and status bars. Touch the question mark and then touch the icon that needs explanation.







The BERNINA 580, 710, and 750 QE models are equipped with one Personal Program; the 820 has two and the 780 & 830 have four.

Use these menus to store your favorite stitches, most often used stitches, or a group of stitches needed for a particular technique or project such as the stitch collage shown on the next page.

### Creating a Personal Program

*BERNINA 580E, 710, 750QE, 780*

- Select the desired stitch
- Make any desired altered settings to SW and SL
- Select “i” to make additional changes to settings, back arrow to return to previous screen.
- Touch Personal Program. *Note: On the BERNINA 780, select 1 of the 4 Personal Programs, then touch the stitch with the yellow border to save to personal program.*
- Select Save Stitch folder with arrow in.
- Touch stitch with yellow border to add to Personal Program
- Select Add to Personal Program

### 8 Series

- Select the desired stitch
- Make any desired altered settings
- Touch the Stitch Altering Area
- Select Add to Personal Program; select 1 of the 4 Personal Programs, then touch the new stitch (flashing) to save.

*Note: When creating a new folder in the BERNINA 820 or 830, select the desired folder, type a name, such as “Collage”, then select Check. Touch the stitch to save it in the named folder. Subsequent additions are made as detailed above.*



8 Series Personal Program Screen

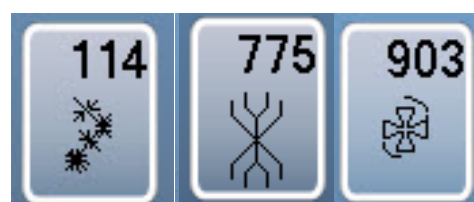
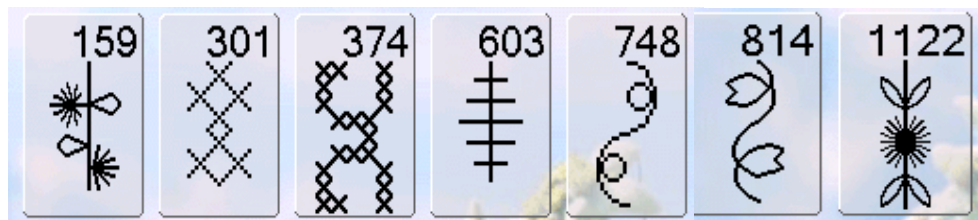


580 Personal Program Screen

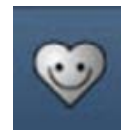


780 Personal Program Screen

See the following page for more directions on entering the following stitches into Personal Program



830	830	830	830	830	830	830	750	750	780
820	820	820	820	820	820	820	710	710	750
780	780	780	780	780	780	780	580	580	710
	750	750	750	750					580
	710	710	710	710					
	580	580	580	580					



**Fabric:** Firm woven fabric, 4" x 6" and  
Heavyweight tear-away stabilizer, 4" x 6"  
**Needle:** 80/12 Universal  
**Thread:** 30 wt. cotton embroidery  
**Needle Position:** Default  
**BERNINA Presser Foot:** Open Embroidery Foot #20/20C/20D

### Creating a Stitch Collage Personal Program

Using the directions on the previous page, enter the stitches shown below into Personal Program, making the indicated alterations.

#### First Stitch:

#159 (8 Series, 780) Pattern Repeat 4x  
#114 (750, 710, 580E) Pattern Repeat 4x

#### Second Stitch:

#301 Pattern Repeat 7x

#### Third Stitch:

#374 Pattern Repeat 2x

#### Fourth Stitch:

#603 Pattern Repeat 5x

#### Fifth Stitch:

#748 Pattern Repeat 5x

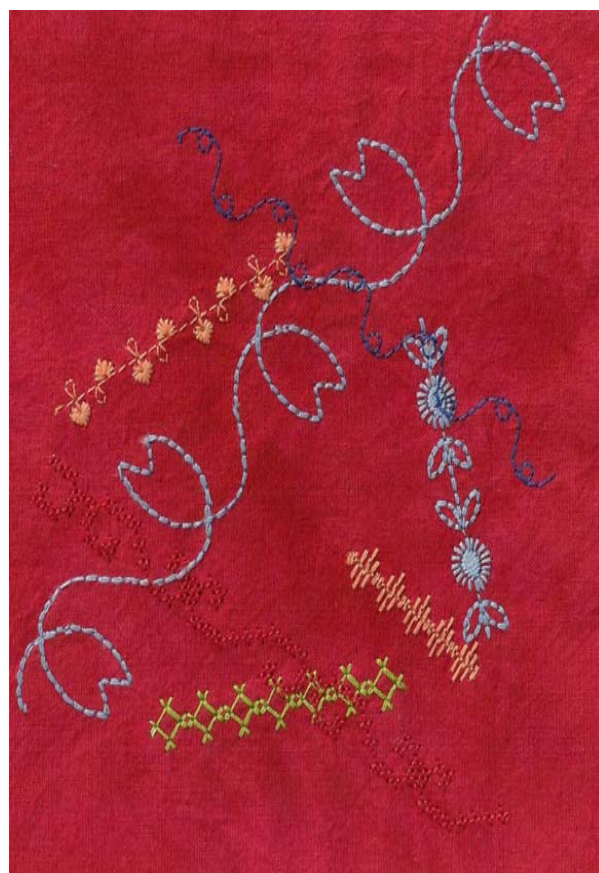
#### Sixth Stitch:

#814 (8 Series, 780) Pattern Repeat 3x\*  
#775 (750, 710, 580E) Pattern Repeat 3x

#### Seventh Stitch:

#1122 (8 Series, 780) Pattern Repeat 3x  
#903 (750, 710, 580E) Pattern Repeat 3X

\*requires the use of Sideways Motion Foot #40C



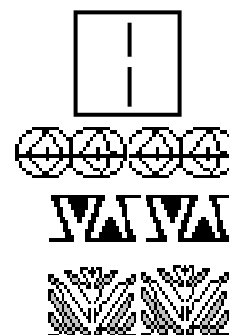
### Stitching a Stitch Collage

1. Place stabilizer behind the fabric.
2. Select the Personal Program function
  - 580E: Touch Stitch Pattern Selection folder with arrow
  - 7 & 8 Series: Access the Collage folder (as previously named).
3. Select the stitches as desired and sew them in a random arrangement as desired, using the on-screen recommended presser foot.

## SEW-HOW

Do you know how to:

- Add stitches to your Personal Program?
- Delete stitches from Personal Program?
- Access your Personal Program?



**Fabric:** Firm woven fabric, 4" x 6" *and*  
Heavyweight tear-away stabilizer, 4" x 6"  
**Needle:** 80/12 Universal  
**Thread:** 30 wt. cotton embroidery  
**Needle Position:** Default  
**BERNINA Presser Foot:** Open Embroidery Foot #20/20C/20D

## Engaging/Disengaging Long Stitch Function

### 8 Series, 780 & 750 QE:

- Touch the icon on the screen to engage Long Stitch function.
- Touch CLR to turn off Long Stitch function, or touch the icon a second time.

### 7 Series & 580E:

- Select desired stitch #
- Select "i" and select Long Stitch
- Sew stitch
- Touch CLR to turn off the Long Stitch function.
- Touch back arrow to return to previous screen.
- Select new stitch and continue process.

## Long Stitch Exercise

Place stabilizer behind the fabric.

### Row #1

Select stitch #615; stitch a second row similar to the first.

### Row #2

Select stitch #606; sew for approximately 2" - 3".

Engage the Long Stitch function and sew another 2" - 3".

Disengage the Long Stitch function.

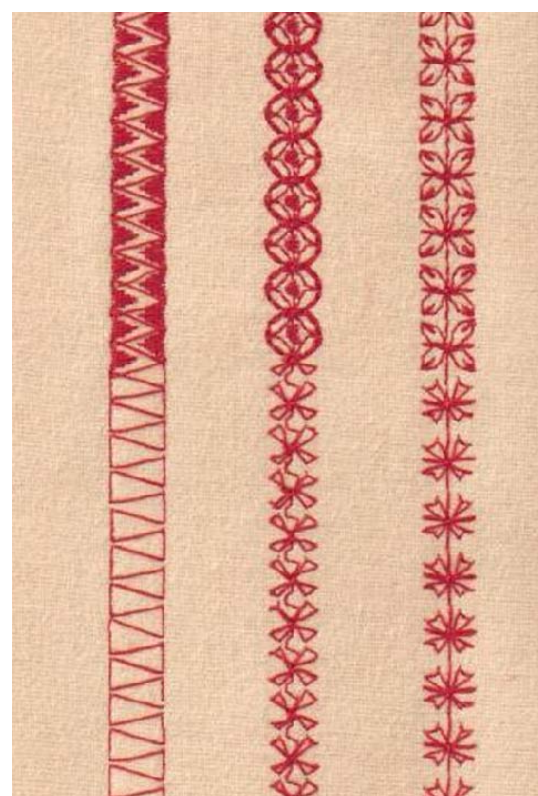
### Row #3:

7 & 8 Series: Select stitch #655; stitch a third row.

580E: Select stitch #644; stitch a third row.

## Tips

- Use the Long stitch function with the straight stitch for basting.
- Adjust the straight stitch length to 5mm or 6mm on the 8 Series and 780 models; engage the Long Stitch function for the longest straight stitch, about 1 1/4" long.
- Use the Long stitch function with a triple straight stitch for a beautiful "saddle" stitch for topstitching.



Row #1  
Stitch 615

Row #2  
Stitch 606

Row #3  
Stitch 655

## SEW-HOW

Do you know how to:

- Engage the Long Stitch function?
- Use the Long Stitch function for basting and for topstitching?



**Fabric:** Firm fabric, 4" x 6" and  
Heavyweight tear-away stabilizer, 4" x 6"  
**Needle:** 80/12 Universal  
**Thread:** 30 wt. cotton embroidery  
**Needle Position:** Default  
**BERNINA Presser Foot:** Open Embroidery Foot #20C/20D



Use the Tapering function to taper the end of a line of stitching, create corner accents and stitch decorative frames and boxes.

Place stabilizer behind the fabric.

Select Tapering Decorative Stitch menu #1401.

### Edge Alignments

Select the Tapering stitch #1401 (zigzag/satin stitch); adjust the stitch width to 6mm.

Stitch four lines of tapered stitching with a different tapering configuration for each. Define the overall length of the taper prior to beginning stitching using the Tapering Length function (on-screen for 8-series, in information ["i"] on the 780) or use the Quick Reverse to set the length.

### Decorative Frame

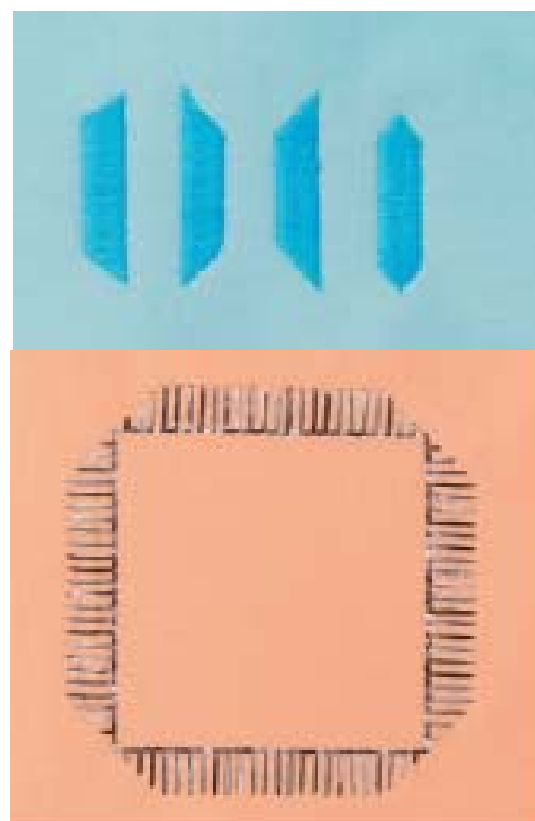
Select one of the tapering stitches, then your choice of one of the tapering configurations (sample shown is Taper stitch #1414.).

Select new taper stitch and define length; sew, then pivot, stitch again, pivot and continue until the box shape is formed.

### Tips

- Use the Needle Stop Down function for more control as you stop and pivot at the corners.
- Use the Raise Presser Foot button when pivoting your project in the corners of the design.
- Certain tapering stitches are more appropriate for geometric applications.
- Sew a test sample before sewing your project.

*Note: To leave the Tapering Configuration menu, touch the red X.*



## SEW-HOW

Do you know how to:

- Create a line of tapered stitching?
- Create a square with tapered corners?





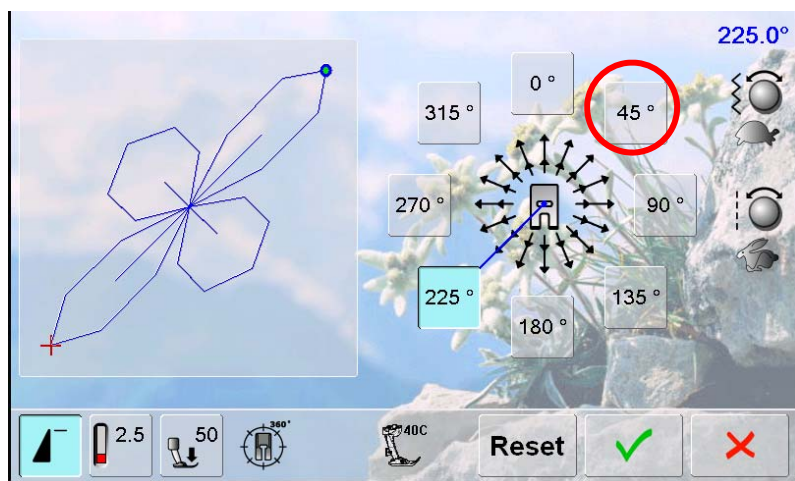
## BERNINA 830 and 780

The multi-directional stitching feature of the 830 and the 780 offers sewing in 360° for single stitches and for stitch combinations.

- **BERNINA 830:** Select the stitch, then the multi-directional icon.
- **BERNINA 780:** Select the stitch, then information ("i"), then the multidirectional icon.
- Rotate the selected stitch in 45° increments by touching one of the direct-selection buttons on the screen (indicated by the red circles in the graphics below).
- Rotate in 0.5° increments by turning the stitch width knob.
- Rotate in 1° increments by turning the stitch length knob.
- The Stitch Altering Area indicates the sewing direction of the stitch and the Start (•) and Stop (+) points of the selected stitch.
- The Multi-directional function only appears if the selected stitch can be sewn in multiple directions.

## Keys to Successful Multi-Directional Stitching

- Support fabric with stabilizer
- Attach Slide-on Table
- Draw parallel guidelines to aid in visually keeping the fabric straight
- Use fingertip guiding (lightly holding the fabric without inhibiting or helping it)
- Attach Sideways Motion Foot #40C



**BERNINA  
830**



stitch width  
knob—0.5°

stitch length  
knob—1°

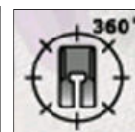


**BERNINA  
780**



stitch width  
knob—0.5°

stitch length  
knob—1°



*BERNINA 830 and 780 only*

**Fabric:** Firm woven fabric, 4" x 8" and  
Heavyweight tear-away stabilizer, 4" x 8"

**Needle:** 80/12 Universal

**Thread:** 30 wt. cotton embroidery

**Needle Position:** Default

## BERNINA Presser Foot: Sideways Motion Foot #40C

Place stabilizer behind fabric; mark parallel guide lines about 1" apart on the fabric as a reference for guiding during the stitching process.

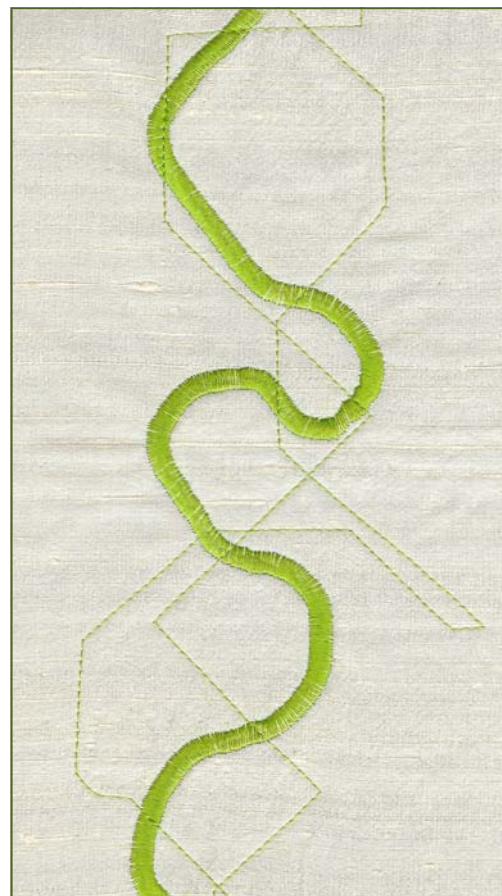
Select the Straight stitch, then select the Multi-Directional Stitching icon (the function only appears if the selected stitch can be sewn in multiple directions).

Select a direction by using the stitch width knob to rotate the stitch pattern in 0.5° steps, the stitch length knob for 1° steps or the direct-selection buttons for rotating in 45° steps for the desired direction. Stitch 1" to 2".

Select a different direction. Stitch a couple inches. Select another direction; stitch. Continue selecting directions and stitching.

Repeat, using a zigzag/satin stitch. Start at the top of the fabric and overlapping the stitching with the previous straight stitching.

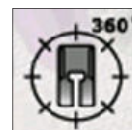
*Note: The BERNINA 830 and 780 can change directions while stitching; the machine does not have to be stopped first.*



## SEW-HOW

Do you know how to:

- Access the straight and zigzag stitches for Multi-Directional stitching?



BERNINA 830 and 780 only

**Fabric:** Firm woven fabric, 4" x 6" and  
Heavyweight tear-away stabilizer, 4" x 6"  
**Needle:** 80/12 Universal  
**Thread:** 30 wt. cotton embroidery  
**Needle Position:** Default  
**BERNINA Presser Foot:** Sideways Motion Foot #40C

*This exercise, for the BERNINA 830 only, features an all-over design created by selecting one stitch ( #656 is shown in the sample) and changing directions as you sew.*

### Twisted Scrolls

Place stabilizer behind fabric; mark parallel guide lines about 1" apart on the fabric as a reference for guiding during the stitching process.

Select 225° on the compass, Pattern Repeat 1x and Needle Stop Down. Stitch one stitch pattern and stop; do not remove the fabric.

Select 135° on the compass, leaving Pattern Repeat 1x and Needle Stop Down engaged. Stitch one stitch pattern and stop; do not remove the fabric.

Stitch from one end of the fabric to the other, guiding fabric so that the "+" stays parallel and perpendicular to the presser foot.

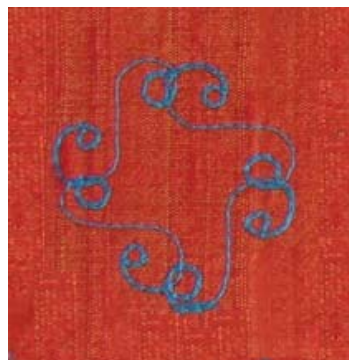
Stitch additional rows of this stitch combination, covering the surface of the fabric.

*Note: Some adjustments may be necessary depending on the fabric, thread, and stabilizer used to create the stitch sample.*

*Optional: Create a 4-sided motif by selecting 315° and 45° as the third and fourth sides.*



*Note: This technique can also be created by importing sewing machine stitches into Embroidery, which will be covered in Workbook 4.*



## SEW-HOW

Do you know how to:

- Change directions in 45° increments when Multi-Directional stitching?



**Fabric:** Firm woven fabric, 6" x 6" and  
Heavyweight tear-away stabilizer, 6" x 6"

**Needle:** 80/12 Universal

**Thread:** 30 wt. cotton embroidery

**Needle Position:** Default

**BERNINA Presser Foot:** Sideways Motion Foot #40C



### BERNINA 830

- Open Combi-Mode
- Select the Alphabets Category and the large monogram.
- Enter 3 letters (initials).
- Select the Multifunction Icon (eyeglasses) and the Connecting Stitches Icon.
- With your stylus, fingertip or multi-function knobs, arrange the letters in a pleasing fashion.
- Close connecting stitches and preview screen.
- Select pattern begin, set Pattern Repeat to 1 and stitch.

### BERNINA 780

- Select the Alphabet Category and the Large Monogram.
- Open Combi-Mode.
- Add letter 1; select 'i' and select the middle size monogram.
- Close information and add the next 2 letters (the size is automatically adjusted).
- Select the editing icon, and drag and drop the letters into place using your stylus, fingertip or multi-function knobs.
- Close Editing.
- Select pattern begin, set Pattern Repeat to 1 and stitch.

### Stitching the Monogram

Place stabilizer behind fabric; mark parallel guide lines about 1" apart on the fabric as a reference for guiding during the stitching process.

Position the stabilized fabric under Sideways Motion Foot #40C. Engage Pattern Begin and Pattern Repeat 1x.

As you stitch, guide the fabric, keeping the sides of presser foot parallel to the guiding lines drawn on the fabric. Clip and remove the basting stitches between the monogram letters.

#### Monogram Sizes

- 1 = 30mm (1.18")
- 2 = 20mm (0.8")
- 3 = 15mm (0.6")



#### Tips

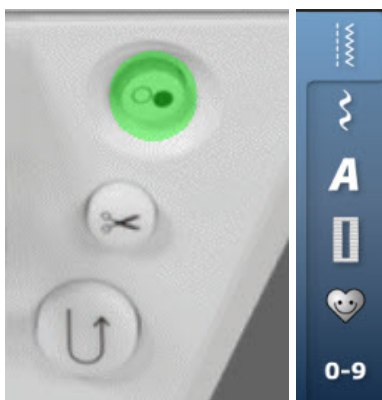
When sewing Sideways Motion stitches use the slide-on table to increase the sewing surface.

Make sure that the fabric is fed evenly and lightly, ensuring that it cannot push against or catch on anything. It is important to let the sewing computer sew, without pulling, pushing or holding back the fabric.

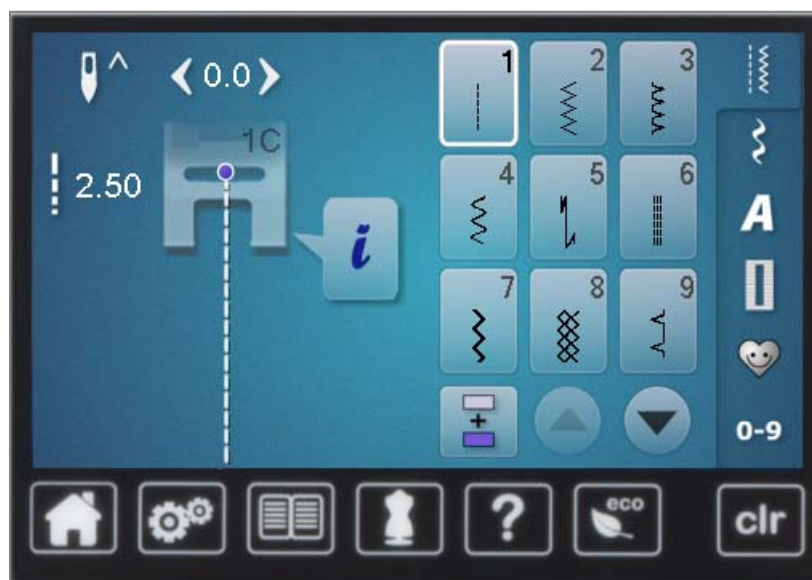
## SEW-HOW

Do you know how to:

- Draw guidelines for directional stitching?
- Find the starting and ending points for the monogram letters?



SEWING FUNCTIONS					
	Information		Confirm Selection		Delete
	Back		Leave Active Display		Balance
	Pattern Begin		Pattern Repeat		Alter Pattern Length
	Programmable Pattern End / Securing		Mirror Image (Left/Right)		Mirror Image (Up/Down)
	Security Program		Needle Stop Up/Down		Needle Position
	Continuous Reverse Sewing		Securing		Upper Thread Tension
	Presser Foot Indicator		Presser Foot Pressure		Stitch Selection by Number
	Practical Stitches		Decorative Stitches		Personal Program
	Alphabets		Alphabet Upper/Lower Case		Lettering Size
	Combi-Mode		Edit the Complete Combination		Edit Combination at Cursor Position
	Long Stitch		Combination Sub-divider (1)		Combination Sub-divider (2)
	Buttonholes		Manual Buttonhole		Automatic Buttonhole Length with Button Measuring
	Stitch Counter Buttonhole		Direct Entry Buttonhole Length		Buttonhole Slit Width



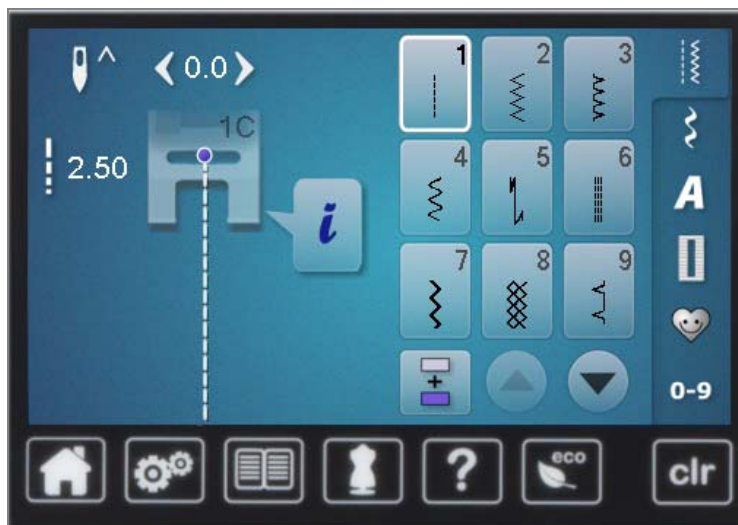
## SEWING FUNCTIONS

	Home		Stitch Selection by Number		Upper Thread Tension		Pattern Begin
	Setup Program		Practical Stitches		Security Program - Needle; Stitch Plate		Pattern Repeat
	Tutorial		Decorative Stitches		Presser Foot Indicator		Alter Pattern Length
	Creative Consultant		Alphabets		Presser Foot Pressure		Mirror Image (Left/Right)
	Help		Personal Program/Memory		Needle Stop Up/Down - Permanent		Mirror Image (Up/Down)
	Eco		Buttonholes		Needle Stop Up/Down - Temporary		Combi-Mode
	Clear Settings		Direct Entry Buttonhole Length		Programmable Pattern End /Securing		Edit the Complete Combination
	Information		Program Buttonhole Length		Securing		Edit Combination at Cursor Position
	Back		Stitch Counter Buttonhole		Needle Position		Combination Subdivider (1)
	Confirm Selection		Manual Buttonhole		Continuous Reverse		Combination Subdivider (2)
	Leave Active Display		Buttonhole Slit Width		Save Stitch Pattern Setting		Lettering Size
	Delete		Balance		Back to Basic Stitch Setting		Alphabet - Upper/Lower Case



# My **BERNINA** BERNINA 750 QE Sewing Functions

## Sewing Machine Workbook 3



SEWING FUNCTIONS							
	Home		Stitch Selection by Number		Upper Thread Tension		Pattern Begin
	Setup Program		Practical Stitches		Security Program - Needle; Stitch Plate		Pattern Repeat
	Tutorial		Decorative Stitches		Presser Foot Indicator		Alter Pattern Length
	Creative Consultant		Alphabets		Presser Foot Pressure		Mirror Image (Left/Right)
	Help		Personal Program/Memory		Needle Stop Up/Down - Permanent		Mirror Image (Up/Down)
	Eco		Buttonholes		Needle Stop Up/Down - Temporary		Long Stitch
	Clear Settings		Direct Entry Buttonhole Length		Programmable Pattern End /Securing		Combi-Mode
	Information		Programmable Buttonhole		Securing		Edit the Complete Combination
	Back		Stitch Counter Buttonhole		Needle Position		Edit Combination at Cursor Position
	Confirm Selection		Manual Buttonhole		Continuous Reverse		Combination Subdivider (1)
	Leave Active Display		Buttonhole Slit Width		Stitch Counter		Combination Subdivider (2)
	Save Stitch Pattern Setting		Delete		Balance		Lettering Size
	Back to Basic Stitch Setting						Alphabet - Upper/Lower



SEWING FUNCTIONS							
	Home		Stitch Selection by Number		Upper Thread Tension		Pattern Repeat
	Setup Program		Practical Stitches		Security Program - Needle		Alter Pattern Length
	Tutorial		Decorative Stitches		Presser Foot Indicator		Mirror Image (Left/Right)
	Creative Consultant		Alphabets		Presser Foot Pressure		Mirror Image (Up/Down)
	Help		Quilting Stitches		Security Program - Stitch Plate		Multi-directional Sewing
	Eco		Personal Program/Memory		Feed Dog Up/Down		Combi-Mode
	Clear Settings		History		Filling of Bobbin		Editing Mode
	Information		Buttonholes		Stitch Pattern View - Match Size to Display		Edit the Complete Combination
	Back		Direct Entry Buttonhole Length		Needle Stop Up/Down - Permanent		Edit Combination at Cursor Position
	Confirm Selection		Program Buttonhole Length		Needle Stop Up/Down - Temporary		Adjust Width in a Combination
	Leave Active Display		Stitch Counter Buttonhole		Securing		Adjust Length in a Combination
	Delete		Manual Buttonhole		Programmable Pattern End /Securing		Move Stitch Patterns in a Combination
	Save Stitch Pattern Setting		Buttonhole Slit Width		Pattern Begin		Combination Sub-divider (1)
	Back to Basic Stitch Setting		Stitch Counter		Needle Position		Combination Sub-divider (2)
	Continuous Reverse Sewing		Balance		Connecting Stitches		Lettering Size
	Backstepping		Long Stitch		Tapering		Monogram Size

## External Buttons

1. Automatic Threading\*
2. Securing Function\*
3. Needle Up/Down
4. Pattern End
5. Presser Foot Up/Down
6. Auto Thread Cutter
7. Slide Speed Control
8. Start/Stop/Hover\*
- 9 Backstepping/Quick Reverse



\* Illuminated Buttons



Practical  
Stitches



Decorative  
Stitches



Alphabets



Buttonholes



Quilting  
Stitches



Personal  
Program



History  
Stitches



Clear



Setup



Tutorials



Creative  
Consultant



Help



Eco Mode

## SEWING FUNCTIONS

	Single Mode		Confirm Selection		Delete
	Combi Mode		Leave Active Screen		Balance
	Stitch Selection by Number		History		Security Program
	Securing Function with 4 Stitches		Save Stitch Combinations & Lettering		Multi-function Icon
	Permanent Reverse Sewing		File Drawers (Memory)		Presser Foot Indicator
	Back Stepping		Combination Sub-divider (1)		Presser Foot Pressure
	Pattern Begin		Combination Sub-divider (2)		Feed Dog Position
	Pattern Repeat 1-9x		Alphabet Upper/Lower Case		Thread Tension
	Pattern Extend 2-5x		Alphabet Lettering Size		Stitch Counter
	Mirror Image (Left/Right)		Buttonhole Length Direct Entry		Long Stitch
	Mirror Image (Up/Down)		Programming Buttonhole Length		Personal Program
	Manual Buttonhole		Buttonhole Slit Width		Time/Alarm



## External Buttons

1. Automatic Threading\*
2. Securing Function\*
3. Needle Up/Down
4. Pattern End
5. Presser Foot Up/Down
6. Auto Thread Cutter
7. Slide Speed Control
8. Start/Stop/Hover\*
- 9 Backstepping/Quick Reverse



\* Illuminated Buttons



Practical  
Stitches



Setup



Decorative  
Stitches



Tutorials



Alphabets



Creative  
Consultant



Buttonholes



Help



Quilting  
Stitches



Eco Mode



Personal  
Program



Embroidery/  
Sewing  
Mode



History  
Stitches



Clear

## SEWING FUNCTIONS

	Single Mode		Confirm Selection		Delete
	Combi Mode		Leave Active Screen		Balance
	Stitch Selection by Number		History		Security Program
	Securing Function with 4 Stitches		Save Stitch Combinations & Lettering		Multi-function Icon
	Permanent Reverse Sewing		File Drawers (Memory)		Retrieve
	Back Stepping		Combination Sub-divider (1)		Presser Foot Indicator
	Connecting Stitches		Combination Sub-divider (2)		Presser Foot Pressure
	Moving Single Stitch Pattern		Alphabet Upper/Lower Case		Feed Dog Position
	Moving Multiple Stitch Patterns		Alphabet Lettering Size		Multi-Directional Sewing
	Pattern Begin		Monogram Lettering Size		Thread Tension
	Pattern Repeat 1-9x		Buttonhole Length Direct Entry		Stitch Counter
	Pattern Extend 2-5x		Programming Buttonhole Length		Long Stitch
	Mirror Image (Left/Right)		Buttonhole Slit Width		Personal Program
	Mirror Image (Up/Down)		Manual Buttonhole		Time/Alarm

The following features and functions are used in Workbook 3: Creative Options.

	8 Series		7 Series			5 Series
Feature/ Function	830	820	780	750 QE	710	580
Connecting Stitches	yes	—	yes	---	---	---
Drag and Drop Editing	yes	—	yes	—	—	—
Long Stitch	yes	yes	yes	yes	—	yes
Monograms	1 style 3 sizes	—	1 style 3 sizes	—	—	---
Multi-Directional Stitching	360 directions	—	360 directions	—	—	---
Needle Stop Up/Down	yes	yes	yes	yes	yes	yes
Personal Program	yes 4 folders	yes 2 folders	yes 4 folders	yes	yes	yes
Setup Program	yes	yes	yes	yes	yes	yes
Tapering Stitches	yes	yes	yes	—	—	---

The presser feet listed below are included with the purchase of each model as indicated on the chart (-- indicates that the presser foot is not included but may be available as an optional accessory).

	8 Series		7 Series			5 Series
Presser Feet	830	820	780	750 QE	710	580
Reverse Pattern Foot #1/1C/1D	1C & 1D	1C & 1D	1C & 1D	1C & 1D	1C & 1D	1C
Overlock Foot #2/2A	2A	--	2A	--	--	2A
Standard Button-hole Foot #3/3C	3C	--	--	--	--	—
Auto Buttonhole Foot #3A	3A	3A	3A	3A	3A	3A
Zipper Foot #4/4D	4D	4D	4D	4D	4D	4
Blind Hem Foot #5	5	5	5	5	5	5
Jeans Foot #8/8D	--	--	8D	--	--	8
Button Sew-On Foot #18	18	--	--	--	--	--
Open Embroidery Foot #20/20C/20D	20C	20C	20C	20C	--	20C
Embroidery Foot #26	26	--	26	26 w/emb	--	26
Patchwork Foot #37/37D	--	37D	--	37D	--	--
Sideways Motion Foot #40C	40C	--	40C	--	--	--
BERNINA Stitch Regulator #42	42	42	42	42	optional	optional

C = Feet with sensors that enable 9mm stitching

D = Feet that connect to the Dual Feed system of the machine