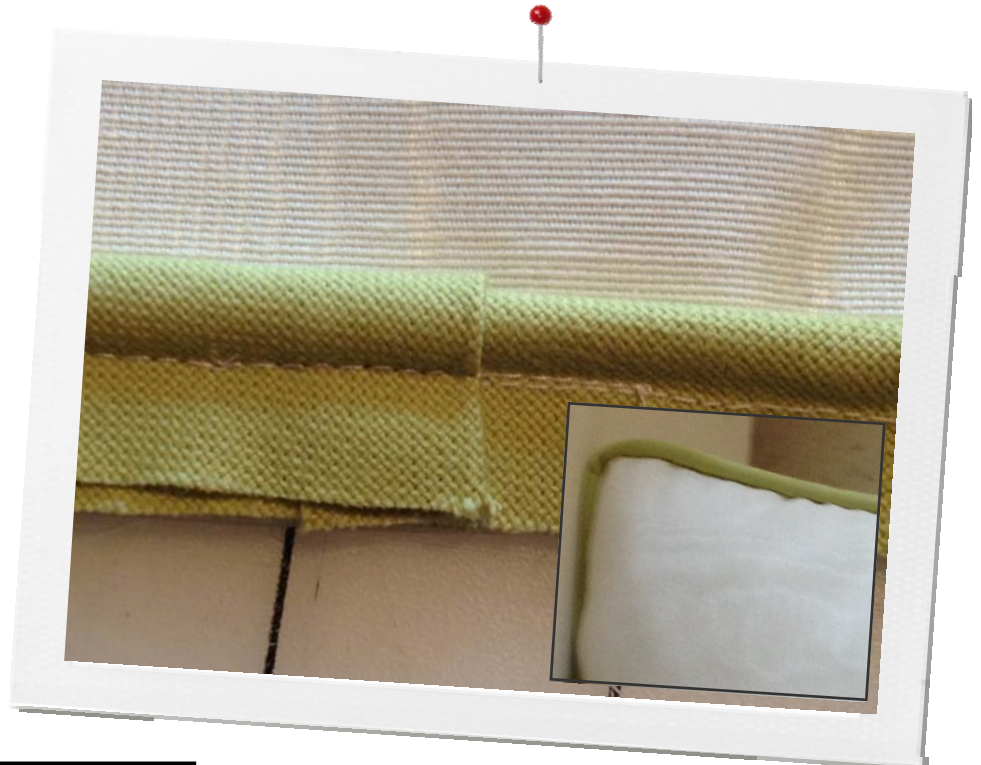


Sewing
Technique

Created by Linda Wenturine

Piping: How to Make and Insert Covered Cord

Whether trimming a cushion or accenting a collar, covered cording adds a tailored, professional finish to any project. And it's easy, too, once you learn how it's done. Follow these step-by-step instructions for beautiful corded edges every time.



Supplies

Machine & Accessories

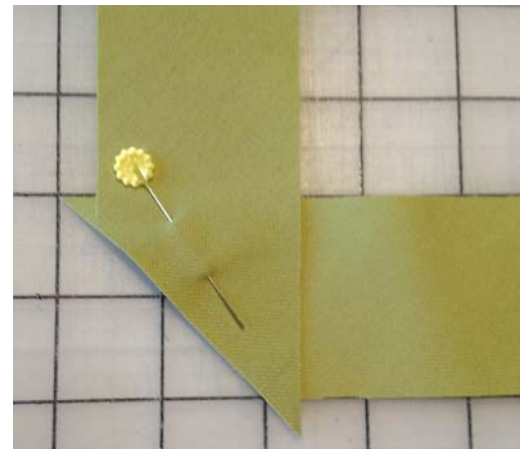
- BERNINA Sewing Machine
- Patchwork Foot #37/37D **OR**
Patchwork Foot with Guide #57/57D
- Bulky Overlock Foot #12/12C **OR**
Double Cording Foot #59/59C (4–6 mm cord) **OR**
Double Cording Foot #60/60C (7–8 mm cord)

Fabric & Notions

- Fabric to cover cord
- 4/32" decorator cord to cover
- All-purpose thread, such as Mettler Metrosene

Cover the Cord

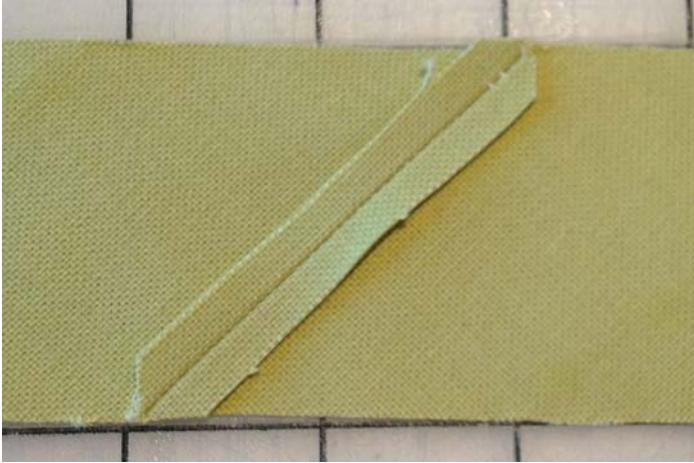
- Cut fabric into 2½"-wide bias strips (cut the fabric on the diagonal).
- Pin the ends of the bias strips together as shown.



Visit www.bernina.com

Projects • Webinars • Promotions

- Stitch together with ¼"-wide seam allowances using Patchwork Foot #37/37D or Patchwork Foot with Guide #57/57D.
- Press seam allowances open and trim the points.



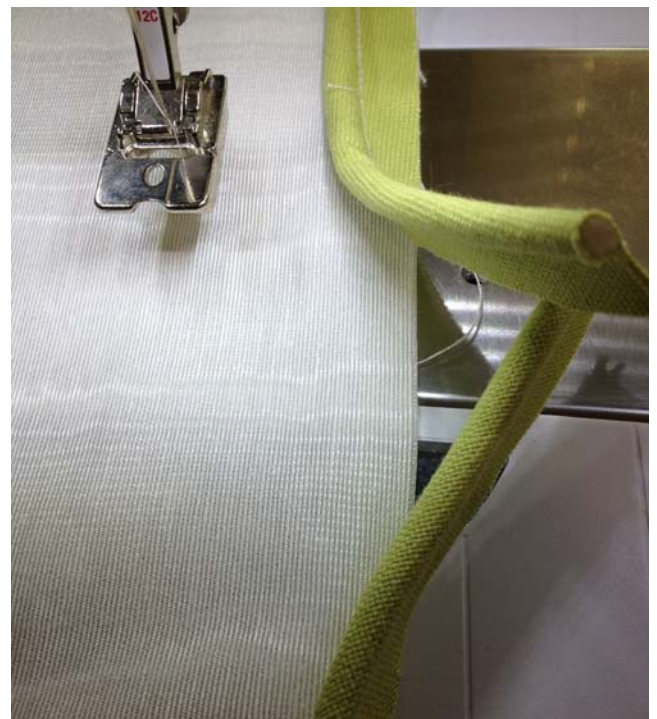
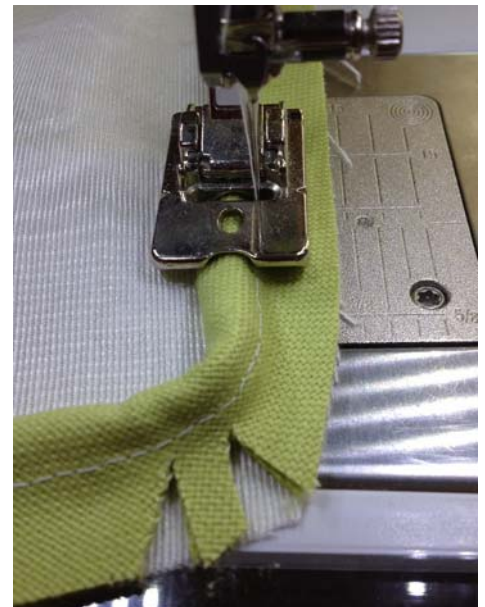
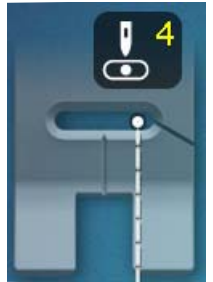
- Wrap the bias strip evenly around the piping.
- Attach Bulky Overlock Foot #12/12C (or Double Cording Foot #59/59C or Double Cording Foot #60/60C to the machine. Select the straight stitch.
- Position the wrapped cord under the groove in the sole of Bulky Overlock Foot #12/12C with the raw edges to the right. Move the needle position to the far right.
- Stitch with a straight stitch, keeping the cord evenly wrapped with fabric as it moves under the foot.



- Trim the seam allowances ½" from the stitching.

Insert the Piping (Covered Cord)

- Place the piping on the right side of the pillow front (or edge of any project to be piped), raw edges even.
- Move the needle one position to the left of far-right.
- Place the edge under the presser foot, with the covered cord in the groove.
- Begin stitching about 3" from the end of the piping. This will be helpful later, when joining the ends together.
- Stitch. Clip the piping as needed to maneuver around corners and curves.
- Stop stitching about 3" from the end.



- Undo about 2" of stitching at both ends of the piping, exposing the filler cord.
- Trim the about 2" of filler cord—but not the fabric wrapper—at one end of the piping.
- Turn under ½" of fabric at this end of the piping.



- Place the finished end of the piping over the exposed opposite end. Trim end of the filler cord to meet the end of the trimmed cord in the turned-under end.
- Open the finished end of the piping and wrap it around the unfinished end.



- Complete the stitching to join the piping ends to the pillow (or other project) edge.



This technique for making and inserting piping (covered cord) is used for the edges of "Dori's 3D Garden Pillow," found in *Through the Needle ONLINE* Issue #18.