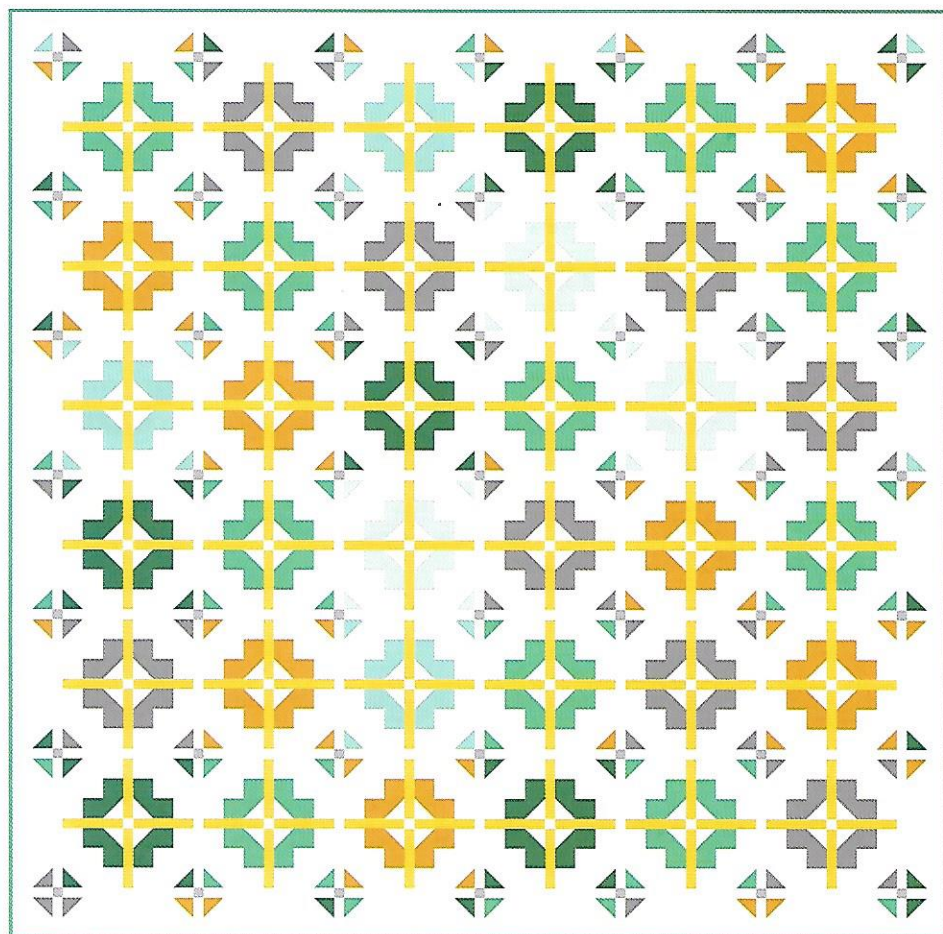




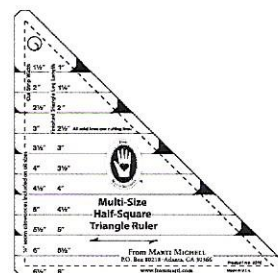
Savannah Squares

Pattern by *moda*

Quilt is 93" x 93"



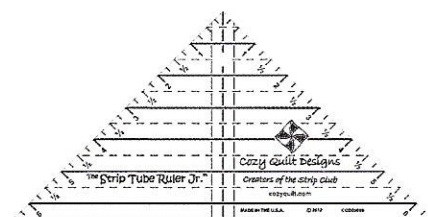
RECOMMENDED TOOLS



Multi-Size Half-Square Triangle Ruler

by Marti Michell
Stock #8290

OR



Strip Tube Ruler Jr.

by Cozy Quilt Designs
Stock #CQ 05006

FABRIC REQUIREMENTS

- Prints:** 1 Jelly Roll*
- Block Sashing - Accent:** 1½ yards
- Cornerstones:** 1 Fat Eighth or ⅛ yard
- Background & Border:** 7½ yards
- Binding:** ⅞ yard
- Backing:** 7½ yards

*Jelly Roll = 40 - 2½" x width of fabric strips

Savannah Squares

Quilt is 93" x 93"



Cutting Instructions:

From the Jelly Roll:

- Select (36) strips. From each strip, cut (8) squares - $2\frac{1}{2}" \times 2\frac{1}{2}"$. Set aside the remainder for the half-square triangles.

From the Block Sashing Fabric:

- Cut (7) $6\frac{1}{2}" \times 42"$ width-of-fabric strips. Sub-cut (144) $1\frac{1}{2}" \times 6\frac{1}{2}"$ strips for the block sashing.

From the Cornerstone Fabric:

- Cut (4) $1\frac{1}{2}" \times 21"$ wof strips. Sub-cut a total of (49) $1\frac{1}{2}" \times 1\frac{1}{2}"$ squares.

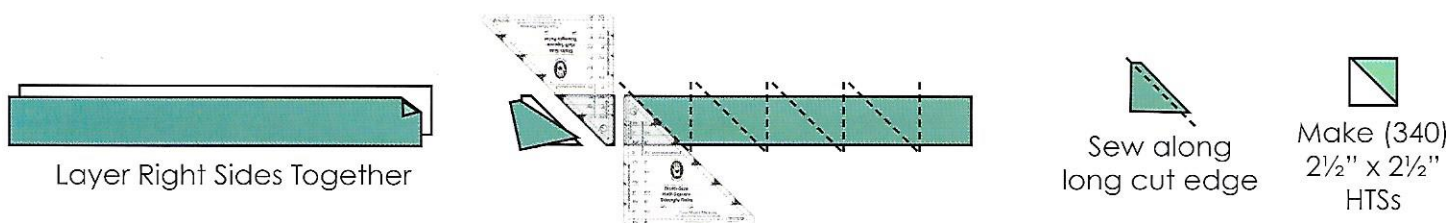
From the Background Fabric:

- Cut (82) $2\frac{1}{2}" \times 42"$ wof strips.
 - Set aside 9 strips for the outer border.
 - Select 9 strips. Sub-cut a total of (144) $2\frac{1}{2}" \times 2\frac{1}{2}"$ squares for blocks.
 - Select 32 strips. Sub-cut a total of (288) $2\frac{1}{2}" \times 4\frac{1}{2}"$ rectangles for blocks.
 - Select 22 strips for half-triangle squares. Cut 18 of the strips in half - $2\frac{1}{2}" \times 21"$ wof.
 - Select 9 strips. Sub-cut a total of (24) $2\frac{1}{2}" \times 9\frac{1}{2}"$ rectangles for pieced border.
 - Select 1 strip. Sub-cut a total of (28) $1\frac{1}{2}" \times 2\frac{1}{2}"$ rectangles for pieced border. (The strip will allow for 26, cut the last two from remainders of the other strips.
- Cut (4) $13\frac{1}{2}" \times 42"$ wof strips. Sub-cut (84) $1\frac{1}{2}" \times 13\frac{1}{2}"$ rectangles for the sashing.
 - From the remainder of the 4th strip, cut (36) $1\frac{1}{2}" \times 1\frac{1}{2}"$ squares.

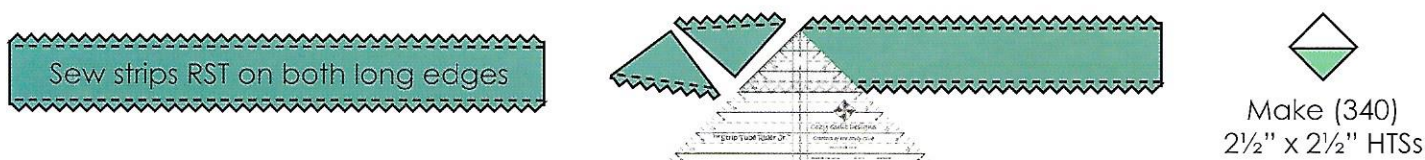
From the Binding Fabric: Cut (10) $2\frac{1}{2}" \times \text{WOF}$ strips.

Making the Half-Triangle Squares. HTSs will measure $2\frac{1}{2}" \times 2\frac{1}{2}"$ unfinished - 340 are required.

Multi-Size Triangle Ruler: Layer one print and one background strip - $2\frac{1}{2}" \times 21"$ - with right sides together. Use the 45-degree ruler with the $2\frac{1}{2}"$ line along the bottom edge of the strip, rotating the template every other cut. **Cut at least 9 triangles from each strip.** Join the triangles with a scant $\frac{1}{4}"$ seam along the long edge of the triangle. Press the seam to the medium/dark triangle.



Strip Tube Ruler: Layer one print and one background strip - $2\frac{1}{2}" \times 21"$ - with right sides together. Stitch a scant $\frac{1}{4}"$ seam on **both long edges** of the strip. Align the $2\frac{1}{2}"$ line of the Strip Tube ruler along the bottom stitching line and cut both sides of the triangle. Turn the ruler to cut the next triangle. **Cut at least 9 triangles.** Press the seam to the medium/dark triangle. (For more information - <https://cozyquilt.com/PDFs/STRBonusGuide.pdf>)



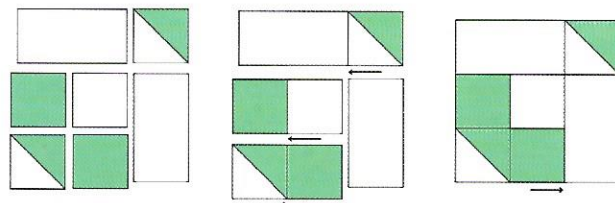
All seams are a scant $\frac{1}{4}$ ". Press the seams in the direction of the arrows.

- From a single print, select (8) HTSs and (8) print squares - $2\frac{1}{2}$ " x $2\frac{1}{2}$ ", and from the background - (4) squares - $2\frac{1}{2}$ " x $2\frac{1}{2}$ ", and (8) rectangles - $2\frac{1}{2}$ " x $4\frac{1}{2}$ ". Lay out the pieces as shown - this is one corner of a full block.

Join the pieces as shown. Press the seams in the direction of the arrows.

The pieced unit will measure $6\frac{1}{2}$ " x $6\frac{1}{2}$ ".

Repeat to make four matching units.

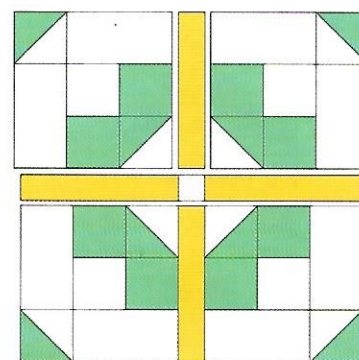


- Lay out the 4 matching units, 4 sashing strips - $1\frac{1}{2}$ " x $6\frac{1}{2}$ ", and 1 center square - $1\frac{1}{2}$ " x $1\frac{1}{2}$ " as shown.

Join the parts to make rows. Press the seams to the sashing strips in each row.

Join the rows to complete the block - press the seams to the middle sashing strip row. The block will measure $13\frac{1}{2}$ " x $13\frac{1}{2}$ ".

Repeat to make 36 blocks.



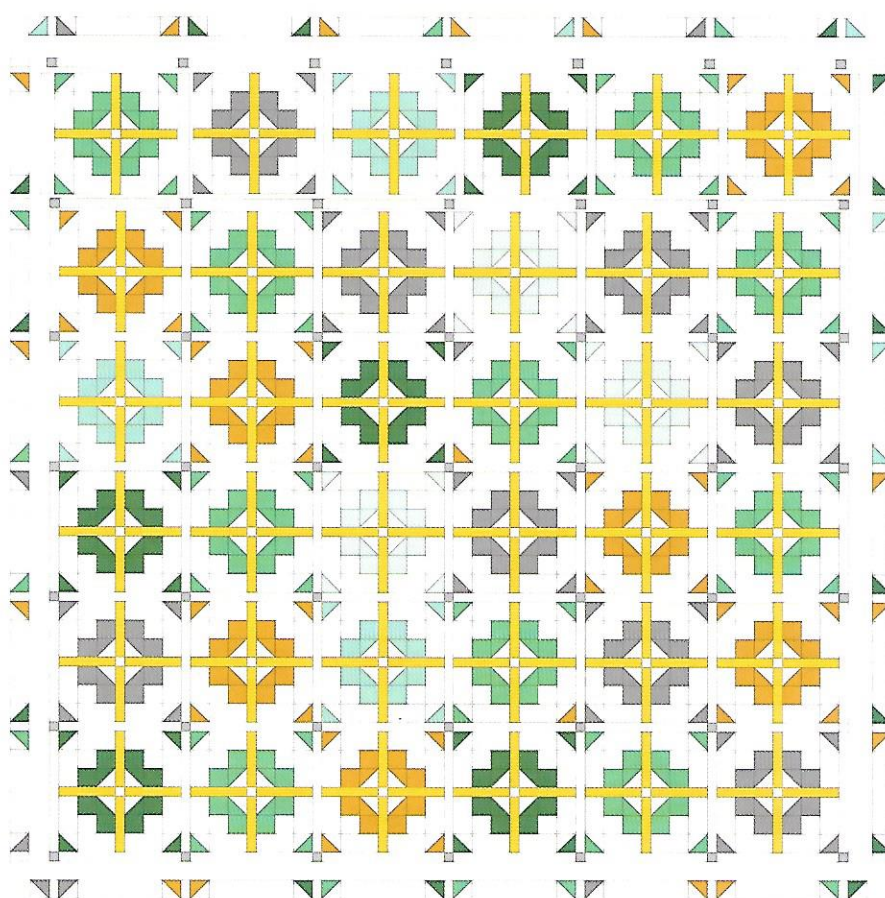
Construction. Lay out the blocks in six rows of six blocks each, alternating the blocks with $1\frac{1}{2}$ " x $13\frac{1}{2}$ " sashing strips and $1\frac{1}{2}$ " x $1\frac{1}{2}$ " cornerstones.

Join the blocks/parts in each row. Press the seams to the sashing strips - away from the blocks and cornerstones.

The pieced border rows are made with HTSs, $1\frac{1}{2}$ " x $2\frac{1}{2}$ " rectangles, and $2\frac{1}{2}$ " x $9\frac{1}{2}$ " rectangles. Press these seams to the rectangles - away from the HTSs.

Join the rows to complete the quilt top. Press the seams to the sashing strip rows - away from the block rows. Join the two side border rows to either side of the center. Finally, join the top and bottom border rows.

The quilt top will measure $89\frac{1}{2}$ " x $89\frac{1}{2}$ " at this stage.



Completing the Top.

Piece the $2\frac{1}{2}$ " border strips. Press the seams open. Cut the following lengths:

- **Side borders.** Cut (2) $2\frac{1}{2}$ " x $89\frac{1}{2}$ " - or the length of your quilt top.
- **Top/Bottom borders.** Cut (2) strips - $2\frac{1}{2}$ " x $93\frac{1}{2}$ ".

Join the $2\frac{1}{2}$ " x $89\frac{1}{2}$ " side border strips to the sides of the quilt top. Press the seams to the border strips.

Join the $2\frac{1}{2}$ " x $93\frac{1}{2}$ " top/bottom border strips to the top/bottom edges of the quilt top. Press the seams to the border strips.

Quilt and bind as desired.

