



Stitches in the Sand

April 2026

MEETING DATE: April 9th at the Norman P. Murray Center and Zoom at 7:00pm.

Programs

Our Guest Speaker: Michelle Trimble

Our April speaker is Michelle Trimble from Quilting Chemistry... quilter, pattern designer, and educator based in San Francisco. Michelle enjoys experimenting with new-to-her techniques, dramatic layouts with bold saturated colors, and adding texture to her quilts with free motion quilting. Her work has been featured in magazines and hung at local and international quilt shows including Houston International Quilt Festival and QuiltCon. I enjoy teaching workshops where I encourage my students to adopt a growth mindset as I gently encourage them to step outside their comfort zone. My workshops incorporate lecture, demo, and hands on experience to ensure students gain the confidence they need to tackle new concepts and skills.



If you would like to join us for dinner with the speaker before the guild meeting, RSVP with Norah at (949) 636-2790 no later than Wednesday. Dinner will be at the California Pizza Kitchen on Marguerite Parkway at 4:45 pm.

Upcoming speakers:

May: Jenny Lyon

June: Tiffany Hayes

July: Members Showcase



Inside this issue:

President's Message	2
Past President Message	3
March Photos	4
From the Treasurer	6
Philanthropy News	7
Ways and Means	7
Quilt Show 2026	8
Quilt Show Opportunity	8
Tickets	
Acquisitions Drop Off	9
Making a Sleeve	10
Workshops	11
Sunshine & Shadows	12
New Member Gathering	12
Monthly Mini	13
Block Party	14
Featured Advertiser	15
Show & Tell	16
Things to Do	18
Classified Ads	20
Membership Form	21

Connect with us on social media to join in the fun :

<https://www.facebook.com/Beach-Cities-Quilters-Guild-105189137693733>

Or Members Only Group
<https://www.facebook.com/groups/672436387018111>

BCQG's Board Meeting is held the Third Thursday of the Month via Zoom.

Don't forget to wear your name tag at the meeting!

Need to speak to a board member—Email beachcitiesqg@gmail.com

From the President

I'm very excited about this month's quilt show and I hope you all feel the same! We have a multitude of gorgeous quilts for the auction with the always entertaining Elaine Pappas-Puckett as our auctioneer. If she can't get you to pony up the maximum value for these quilts, no one can.

This year's quilt show is the culmination of months of planning with Susan Probst at the helm and scores of other volunteers. It's a wonderful way to usher in spring while seeing the works of our mega talented members.

If you haven't signed up to help on the actual day, your last chance will be at our April meeting. It definitely takes a village to put something like this together so please do offer your help.

Laura Chambers
2025-26 President



ASPIRE
SEWING MACHINE SERVICES

Featherweight
Services & Repairs

Ryan Breidenbach
Featherweight Specialist

314-315-7661
breidenbachryan@gmail.com
26 Dewberry – Rancho Santa
Margarita, CA 92688



Susan Probst
Longarm Quilting Services


Offering Computerized Edge to Edge
& Custom Quilting

Call or Text (909) 747-4734
susanslongarm@gmail.com



MAMA LOHDE

HANNE LOHDE, OWNER, +1 949-637-4919
MAMALOHDE@GMAIL.COM, WWW.MAMALOHDE.COM



Moore's
Sewing Machines · Ceiling Fans · Vacuums
Specialists in Sales & Service
A Fourth Generation Family Business

MISSION VIEJO · 25390 Marguerite Pkwy · (949) 580-2520
HUNTINGTON BEACH · 15041 Goldenwest St. · (714) 899-3222
CORONA · 591 N. McKinley St. #106 · (951) 736-5457
VICTORVILLE · 16210 Bear Valley Road · (760) 240-4477
TEMECULA · 26490 Ynez Road, Ste. F & G · (951) 297-3796
OUTLET CENTER · 22532 Avenida Empresa, RSM · (949) 829-9459

www.moores-sew.com

From the Past President

Laura's President Quilt "Beaches"



Each year we present a Quilt to the outgoing President as a Thank You for all she has done. This year Laura has chosen Beaches as her theme. I had some wonderful blocks turned into me this last month. If you haven't stopped by to get a background block from me, please do. Let's make this a quilt Laura will treasure. I would like your blocks turned into me by the May meeting.

How to Make a President's Quilt Block

1. Pick up a free 7" background square of fabric (**this is the unfinished block size**) at the President's Quilt table at the Guild Meeting. Fabrics have been preselected from specific colors for the background.
2. Your design **must** fit within the middle of a 5" square. I suggest drawing a 5" square in the middle of the 7" square. Any design outside of that 5" line will not be in the final block. **Important: Do Not trim or square up your block!** This will be done by the committee after all the blocks have been collected.
3. All methods of applique, paper piecing, embroidery etc...are welcome. If you use raw edge applique, please zig-zag the edges down.
4. Embellishments are welcome, just do not attach them to the block. Please put them in a small baggie with your name on it and staple it to the edge of your block.
5. **Sign your block close to the edge of your design**, so that Laura will know who created the block. I will have Pens at the table for anyone needing them. Your signature means so much to the President.
6. **Turn in your block to the President's Quilt Table at the April or May Guild meetings.**

Donna Wester
Past President

March Meeting Photos



March Meeting Photos



From the Treasurer— BCQG Budget Revision

BCQG received a \$50,000 grant from the Orange County Community Foundation. This is a non-restricted grant to support our organization's mission. The board and the membership must approve the budget revision before the guild uses these funds.

MEMBERSHIP VOTE SCHEDULED FOR APRIL GUILD MEETING. PLEASE ATTEND.

The board has approved a budget revision for 25-26 to include:

Grant Received - \$50,000

Additional BCQG philanthropy expenditures- \$2,000

Non-recurring expenditures - \$3,000

Donations for philanthropy needs to other guilds - \$7,500

New Certificate of Deposit at BofA -\$37,500

The additional BCQG philanthropy funds is based on the Philanthropy group's request. Future budget requests may be increased based on Philanthropy's projections.

Non-recurring expenditures include items such as quilt stands, irons... The president will pre-approve any of these expenditures.

Donations to other guilds would be restricted to that guild's philanthropic usage. The goal is to judiciously aid other guilds in meeting the needs of our communities.

It is not mandatory for these amounts to be spent this year. The 26-27 budget will reassess the use of the grant funds.

Philanthropy News

This month 99 quilts were donated to the following: CHOC, person in need, Priority Center, Royal Therapeutic Treatment Center, Silverado Memory Care, UCI Oncology Orange and Irvine, United Cerebral Palsy, VA Long Beach, Vets in Hospice, Village of Hope and others. 35 pillow cases went to: CHOC, Project Foster, Royal Therapeutic and Vitas Hospice. 27 Other items donated include Fleece Wraps, NICU blankets, table toppers and placemats.

Our next sew day is **April 6**. Please join us. We meet at Presbyterian Church of the Masters. 26051 Marguerite Pkwy, Mission Viejo, 92692. Located at the corner of Marguerite and Oso. (park in the lot closest to Oso) Set up starts at 9:00, meeting at 10:00 (or when ever you get there). We have a show and tell at 11:00. We usually start clean up around 2:30. Helpers are always appreciated for set up and take down. We have kits for quilts, NICU blankets and pillow cases to work on and provide batting for quilts donated to Philanthropy. Irons, ironing boards, cutting mats and cutting supplies are provided.

Our request for camp quilts is winding down as we met our donation goal for this years camp, we but always have a need for baby and youth quilts.

Ways and Means

Where can you buy fabric for

\$2.00 per yard

50 cent Fat Quarters?

At the Fabric Sale before the Guild Meeting!

Open for Members and Guests of the Guild

We also accept donations.

Thank you!

Julie Kemmerer and Marti Ryncarz



Jean Impey
Long Arm Quilting Services

31182 Casa Grande Drive
San Juan Capistrano, CA 92675
Jean@SewJean.com
714/815-7884

Computerized, Edge to Edge and Custom work Available



Sew Treasured Quilt Shop

Store Hours
Monday, Wednesday & Friday: 10am - 4pm
Tuesday & Thursday: 10am - 3pm
Saturday: 9am - 2pm
Sunday: Closed

Contact Us
Phone: (951) 304 - 9787
Website: sewtreasuredquiltshop.com
Email: sewtreasured@stquiltshop.com
Facebook: Sew Treasured Quilt Shop
Instagram: @sewtreasuredquiltshop

26855 Jefferson Ave, Suite D, Murrieta, CA 92563

Quilt Show 2026

Together, We Grow



Pattern: Hope's Garden by The Vintage Spool
Appliqued & pieced by Guild Members
Quilted by Jean Impey

Opportunity Quilt Tickets
\$1 per ticket
6 tickets for \$5
For tickets email: BCQ@quiltshow@gmail.com
Awarded Saturday, April 18, 2026 4PM



Beach Cities Quilters Guild P.O. Box 2328 Mission Viejo, CA 92690-2328



Over 150 Quilts on Exhibit
Opportunity Quilt Drawing
Raffle Baskets
Boutique & Vendors

Auction Saturday 2:00pm

Quilt Show

April 17-18, 2026

Friday 5:30pm — 8pm

Fundraiser Preview \$25
(includes access to Saturday Event,
Wine Pull, Appetizers & More!)

Saturday 10am — 5pm

General Admission \$10



For more information:
Beach Cities Quilters Guild
www.beachcitiesquilters.org



Norman P. Murray Community & Senior Center
24932 Veterans Way
Mission Viejo, CA 92692

Air Conditioned—Free Parking
No strollers please

Quilt Show Opportunity Tickets

LAST CHANCE...at the April meeting to turn in Opportunity Quilt tickets and money to qualify for the drawing of the three prizes. These three prizes are a pillow or one of two bags each of which have a block from the quilt on them. Those who have sold or bought \$70 or more worth of tickets are eligible. Elaine and Janet will enter your names based on our records. If you aren't interested in the prizes, you can turn in your tickets at the Quilt Show.



Quilt Show Acquisitions Drop Off

PROCEDURES AND TURN IN DATES FOR QUILT SHOW ENTRANTS

Procedure: At the time of turn in you will receive a special plastic bag to put each quilt, garment, pillow or purse into. You will also receive a claim check form for each item, an identification label, a commemorative label for you to sew on your quilt after the show and a commemorative pin as a thank you for your participation in this year's show.

Sleeve: All quilts, no matter the size, **must** have a **4 inch wide** sleeve, as we are not allowed to pin anything to the drapes. For larger bed-side quilts or those larger than 70" wide, it would be wonderful if you can have a split sleeve so that we can add an extra chain to hold your quilt at the show. Sleeve instructions are also included in the newsletter.

Quilt Show Entry Drop-Off Times for will be at the home of

Nancy McBride
22751 Via Tercero
Mission Viejo, CA 92691

Friday, April 10 10 a.m. to 3 p.m.

Saturday, April 11 10 a.m. to 3 p.m.

If these times are not convenient for you, I will also be available anytime the prior week, but please call ahead to schedule a time convenient for both of us.

If you have any questions or need to make other arrangements for a drop-off time, please contact Nancy McBride at (949) 540-4950.

Directions to Nancy's

I-5 to Alicia

Toward Mountains

Pass 6 stop lights

The 7th light should be Trabuco – Turn left

Go to the 1st stop light (Los Alisos) and Turn right

Go to the 1st stop light (Via Noveno) and Turn right

Go to the 3rd street and turn right (only way you can turn)

Street will curve around – at the bottom of the hill you will come to a cross street – you are then right in front of my house. I am the last house on the right. Green house.

Making a Sleeve for Hanging Your Quilt

1. Measure the width of the quilt between the bindings but not including them.
2. Cut a strip of fabric 6-9" wide by this length. If the length requires two strips, join the strips with a ¼" seam allowance; press seam allowances to one side.
3. Hem the short ends of the strip by folding under ½", pressing, then folding and pressing once more. Topstitch close to the edge of the hem.
4. Fold the sleeve in half lengthwise, wrong sides together and press.
5. Bring each cut edge to the center fold and press. These two folds are your sewing guides so press them crisply.
6. Unfold and wrong sides together, sew the length of the sleeve with a ¼" seam allowance. Press this seam open very carefully so that the crisply pressed folds are not ironed out.
7. With the seam allowance against the back of the quilt, center the sleeve and pin the top fold just below the binding.
8. Smooth the sleeve against the back of the quilt and pin at the bottom fold.
9. Using thread to match, blind stitch along both folds and ends of sleeve. To reduce the pull on the back of the quilt, catch some of the batting in the stitches but not the front of the quilt.



Workshops

Our April speaker is Michelle Trimble from Quilting Chemistry... quilter, pattern designer, and educator based in San Francisco.

Michelle enjoys experimenting with new-to-her techniques, dramatic layouts with bold saturated colors, and adding texture to her quilts with free motion quilting. Her work has been featured in magazines and hung at local and international quilt shows including Houston International Quilt Festival and QuiltCon.

For our workshop with Michelle we will be learning Stunning Improv Starburst quilt.

Working with improv can be wonderfully freeing, yet the outcome can seem overwhelming to the senses. Choosing constraints at the outset of an improv project can not only lower the decision-making burden that can seem overwhelming, it can also ensure your composition finishes with dramatic flair. In this class, you will explore several different variations of improv triangles, and experiment with variables that will alter the look of each variation. You will then incorporate these blocks into a large wedge layout to make a 24" square quilt top that can be finished as either a wall hanging or throw pillow cover

- Students will be able to assemble improv triangle blocks using three different approaches, and gain confidence to experiment with color/value placement within these blocks to change the outcome
- Students will master a method of improv work flow that helps speed the process while ensuring each block retains a unique character
- Students will learn one method of assembling improv blocks into a quilt top incorporating negative space as a design tool
- Students will learn methods for dealing with long bias edges to minimize distortion.



Our March workshop with Gyleen Fitzgerald was a huge success. Students made a block from the Elegance quilt using her butterfly seam method, which resulted in beautifully flat blocks.

Sunshine and Shadows

Past President Sandy Corbin successfully underwent open heart surgery Feb 24th. It is a long recovery and she would love cards or emails. No phone calls yet.



New Member Gathering—Hold the Date

The Welcoming Committee will be hosting a new member gathering on **Saturday, June 13th, 10 - 12:30pm**. Invitations will be sent by email soon to members who joined within the past year. If you joined earlier but missed previous new member events, you are also warmly welcome to join us this year. Please reach out to Catherine Huebscher @ imhuebsch@att.net.



HATHAWAY
QUILTWORKS

Computerized Longarm Quilting & QUILTWORKS Notions

- Precise Edge to Edge quilting by a Gammill Statler Longarm in a clean and professional quilting studio.
- Countless E2E patterns available from our in-house catalog and vendor's website
- Binding services, back piecing and pattern matching, custom designed quilt labels, hanging sleeves
- **QUILTWORKS Notions** – A carefully curated collection of quilter's notions featuring Quilter's Select Rulers & Mats, Aurifil Thread, Olfa Rotary Cutters & Blades, Quilter's Dream Batting and more
- Bring your quilts to life! Beginners welcome

Laguna Hills Business Park

23011 Moulton Parkway J-12

Near I-5 at Lake Forest exit

hello@hathawayquiltworks.com

Text or call Laurel 949-534-2934



SEWING PARTY

Contact : info@sewingparty.com

instagram@sewingparty

Shop : www.sewingparty.com

Monthly Mini



Congratulations go to Holly Batterman, the lucky winner of our March Monthly Mini Raffle. Holly took home the wonderful Sew Together Bag, beautifully crafted and generously donated by Karen Brewin. Thank you, Karen, for sharing your talent with us!!

Looking ahead, our April Monthly Mini Raffle is right around the corner. This time, you'll have the chance to win one of Juan Garcia's delightful Bears.

Raffle tickets will be available at the following prices:

- \$1 for a single ticket
- \$5 for six tickets
- \$10 for thirteen tickets

Don't miss your chance to participate and support our guild while possibly taking home this adorable handmade treasure.




**PIECE +
POINTE**
QUILTING & COSTUMES

JULIE LAYNE
Longarm Quilting Services +
Custom Ballet Costumes

EMAIL | info@pieceandpointe.com
PHONE | 949-779-0289
www.pieceandpointe.com

Diana's Stitchery
Longarm Quilting & Fiber Arts
Creative Designs in Fabric

Diana O'Connor 23361 Cobblefield Mission Viejo, CA
cell 978-239-7830 www.dianassitchery.com



Greg Geithner
Service Specialist for
Sewing, Embroidery & Quilting Machines

949-419-4734
GeithnerG@gmail.com

Block Party

Block party house building continues. Download the pattern and get started. It's NOT too late to start.

Coming soon will be a quick questionnaire to survey members regarding the future of Block Party. Any ideas are welcome to make this the project you want it to be.

If you are a new member stop by the table. Say hi and let us introduce you to 2025/26 Block Party.

Link: <https://windhamfabrics.com/search?options%5Bprefix%5D=last&q=Welcome+Home>

Cheers

Sharon Farley

Sharon@surfcitylocals.com

714-376-5072



Sewing Center
OF ORANGE COUNTY
Guaranteed best price on everything in the store!

www.SewingCenterOfOrangeCounty.com
1239 EAST IMPERIAL HWY. PLACENTIA, CA 92870 1-714-993-2SEW

baby locki JANOME elna JUKI®

SEWING CENTER OF OC
Steve Shuman, Manager

1-714-993-2SEW (2739)
info@sewingcenteroforangecounty.com
1239 East Imperial Highway, Placentia CA 92870
www.sewingcenteroforangecounty.com
Facebook: <https://www.facebook.com/sewingcenterofoc>
Twitter: sewingoc • Instagram: sewingcenteroc



PAL's Sewing & Vacuum Since 1967
www.PalsSewVac.com
(949)645-7257



INNOVA



Handi Quilter



JUKI

FREE 5yr Protection/Service Plan
with every new machine purchase

FREE In-Home Installation & Set -Up
with Every Longarm Purchase

- * Lowest Price Guarantee
- * Free Service/Repair Estimates
- * Speedy Service Turnaround
- * In-Home Longarm Service

For the latest
Specials & News  PalsSewVac  PalsSewVac

15% Guild Discount on Thread and Notions
2299 Harbor Blvd, Costa Mesa, CA 92626

Featured Advertiser

Moore's has been serving the quilting community for over 70 years.

Whether you're new to quilting or a professional, we can help you determine which machine(s) and accessories are best for you based on your interests and goals. We're here to support your passion with the best products and service for your quilting needs! Our array of machine offerings ranges from the most basic to those featuring state of the art technology to enhance your quilting ease and success.

We continue to service and repair all machine brands and are an authorized dealer for Baby Lock, Brother, Pfaff, Janome, Juki, and Handi Quilter products.

When you visit one of our locations in Mission Viejo, Huntington Beach, Brea or Corona, you won't just find salespeople – you'll find new friends who share your devotion to the art of quilting. Come to one of our monthly Sew Fun Club gatherings in-store to hear about the featured items of the month and share your latest project to inspire everyone and enter into our monthly Sew Fun Club drawings. If you can't make it into the store for our SFC, don't worry, you can join us virtually online and still participate in the event and enter to win a prize! If you are looking for new everyday and themed projects, come join us at one of our in-store classes. We host guide classes as well as project classes in all our locations. You can find our four locations, SFC schedule, class schedule and Moore on our website.

We look forward to making your quilting experience the best it can be!

Visit us in store, online at www.moores-sew.com, or give us a call at 800-865-9664. We look forward to

Moore's becoming (or continuing to be!) a partner in your quilting adventures!



Moore's
Beach Cities Quilt Guild Members

**\$5.00 off
your \$20 purchase!***

Mission Viejo • Huntington Beach • Brea • Corona
www.moores-sew.com • 800-865-9664

*Good through December 31, 2026. One use per visit. Valid at any Moore's store location.

Show and Tell from March



Karen Brewin



Christy Valley



Barb Gautner



Judi Karabelnik



Jean Petersen



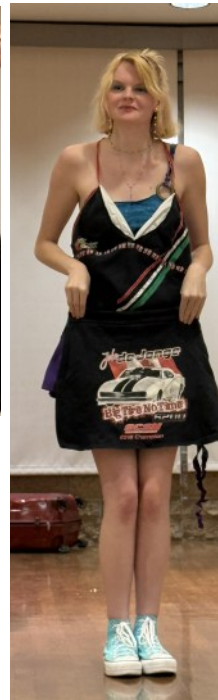
Becky McDaniel



Becky McDaniel



Jan Hirth



Haley Nagel

Show and Tell from March



Julie Donaldson



Holly Batterman



Yael



Lori Yanez



Patrice Lambourne

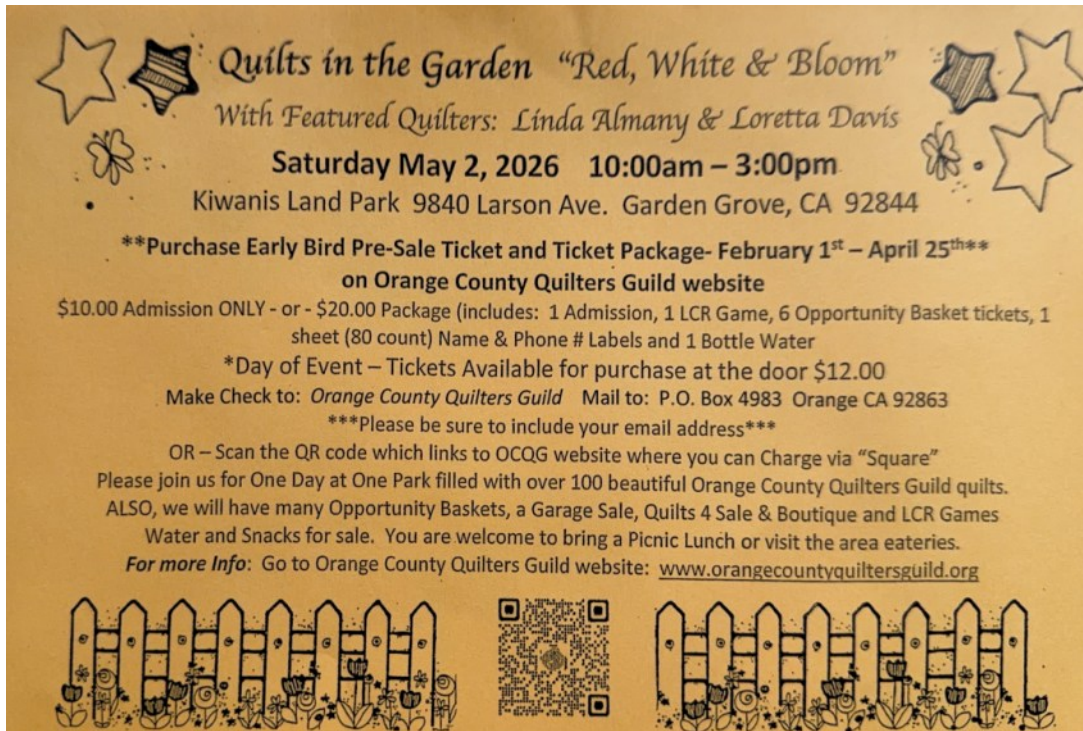


Michell Kenny



Janet Waddill

Things to Do



Quilts in the Garden "Red, White & Bloom"
With Featured Quilters: Linda Almany & Loretta Davis
Saturday May 2, 2026 10:00am – 3:00pm
Kiwanis Land Park 9840 Larson Ave. Garden Grove, CA 92844

Purchase Early Bird Pre-Sale Ticket and Ticket Package- February 1st – April 25th
on Orange County Quilters Guild website
\$10.00 Admission ONLY - or - \$20.00 Package (includes: 1 Admission, 1 LCR Game, 6 Opportunity Basket tickets, 1 sheet (80 count) Name & Phone # Labels and 1 Bottle Water
*Day of Event – Tickets Available for purchase at the door \$12.00
Make Check to: Orange County Quilters Guild Mail to: P.O. Box 4983 Orange CA 92863
Please be sure to include your email address
OR – Scan the QR code which links to OCQG website where you can Charge via "Square"
Please join us for One Day at One Park filled with over 100 beautiful Orange County Quilters Guild quilts.
ALSO, we will have many Opportunity Baskets, a Garage Sale, Quilts 4 Sale & Boutique and LCR Games
Water and Snacks for sale. You are welcome to bring a Picnic Lunch or visit the area eateries.
For more Info: Go to Orange County Quilters Guild website: www.orangecountyquiltersguild.org

Los Angeles County Quilter Guild Presents– Celebrate Quilts

Mark your calendars — our **2026 Quilt Show** is officially scheduled for **May 8th and 9th!**

We're especially excited to announce a **NEW LOCATION** this year: the **Sports Basement**, located at **2100 N. Bellflower Blvd, Long Beach, Ca. 90815.**

- Over 200 Stunning quilts on display
- A Vendor Mall
- Opportunity Baskets filled with great finds
- Silent Auction items
- A treasured-filled quilters flea Market



Little Red Hen - Flying Geese Quilters Guild
RUMMAGE SALE
Find your next fabric crush at *bargain bin* prices
Monday, May 11, 2026
6 PM – 8:30 PM
Rancho San Joaquin Middle School
4861 Michelson Drive, Irvine 92612
Ready, set, rummage!
Come early — the best bargains go fast!
Bring a friend and double the fun!
• Free Admission •



Things to Do



The Chula Vista Quilters Guild proudly presents the
**2026 Chula Vista Quilt Show
and Vendor Mall**

Friday, May 15, 2026, 10 am-4pm
Saturday, May 16, 2026, 10 am-3pm

NOTE: Free parking in front and back!
Handicapped accessible

**Bayview Orthodox Presbyterian Church
505 East Naples St, Chula Vista, 91911**

Only a \$5 donation for entry!
Door prizes awarded every half hour

Buy a ticket for a chance to win our
2026 Hand-Quilted Opportunity Quilt, "Summer Lily"

Special Exhibit: Hoffman Challenge

Featuring our traditional Boutique with handcrafted items, Sew and Craft Booth
offering fabric and gently used craft supplies, Basket Raffle and Food Service!
PLUS, our Vendor Mall featuring fabric and a variety of crafts

Please note: Guild booths/admission and food service only accept cash/checks
Vendors take credit cards

<http://www.chulavistaquiltersguild.com>



**Antelope Valley Quilt Association
Festival of Quilts
Quilt Show & Auction
May 23-24, 2026**

Featured Quilter: Mary Coker

The Show will include:

Craft Boutique

Quilt Auction on Sunday at 1:00

Vendor Mall

Over 100 Gorgeous Quilts on Display

Raffles: Gift Baskets, Elna 30 Travelmate
donated by Al's Vacuum & Sewing and
the Opportunity Quilt

www.avqa.org



**"Déjà Vu"
Opportunity Quilt**

AV Banquet Hall
44950 Valley Central Way
Suite 112
Lancaster, CA 93536

Show Hours
Saturday, 9am-5pm
Sunday, 10am-4pm

Admission
\$10 per person
Children under 12 free

Classified Ads

I fell in love with Jennifer Sampou's fabrics after taking her workshop here at BCQG. I wanted to make this quilt so bad, I gobbled up the kit and tool in April 2024 with hopes and expectations it would be done, or at least well on it's way to completion by now. Alas, reality sets in and I'm not going to get to this. It's a beautiful collection and would make an amazing quilt. Would anyone else like to make this? Price: \$350
If interested, reach out to imhuebsch@att.net.

The Hills Quilt Kit - Expanded size, by Jennifer Sampou

The Molehills Quilt Pattern and Original size tool by Latifah Saafir.

Included are:

- + all the quilt fabric
- + Quilt Backing - wide cut, large single cut for King Size
- + Pattern and Color Guide
- + Original Molehills Acrylic Template



Membership Form



BEACH CITIES QUILTERS GUILD MEMBERSHIP APPLICATION / RENEWAL FORM

The information you provide will be used in the Beach Cities Guild directory. A completed membership application must be submitted no later than the December general meeting to be included in the directory for the current membership year. The directory is distributed to guild members and is not made available to other sources.

Name			<input type="checkbox"/> \$40 New Member <input type="checkbox"/> \$40 Renewal Membership # _____ <input type="checkbox"/> Check # _____ <input type="checkbox"/> Cash
<input type="checkbox"/> <i>If you are renewing your membership, please review your information in the last directory. Include any needed changes below or check the box to indicate that your information is current.</i>			
Address			Date _____
City	State	Zip	
E-Mail Address			
Home Phone#		Work Phone#	
Cell Phone#		Birthday Month _____ Day _____	
Emergency Contact (if desired)		Emergency Contact Phone Number	

Check Box to indicate that Beach Cities Quilters' Guild has permission to use your photo in hard copy and on-line publications. (for Example use of Show & Tell picture in the newsletter)

- BCQG is a nonprofit organization whose purpose is to provide a creative atmosphere, to share knowledge of methods and techniques, and to encourage each member's growth and talent in the field of quilt making and related subjects.
- Meetings are held the 2nd Thursday of each month at the Norman P. Murray Center, 24932 Veteran's Way, Mission Viejo.
- Social time begins at 6:30 pm with the General Meeting & Program from 7:00 pm to approximately 9:00 pm.
- Dues are payable prior to the start of each membership year, annually from October 1 through September 30.
- Please bring this completed form and your dues (check payable to BCQG) to the Membership Table at the General meeting or mail it to:

Beach Cities Quilters Guild - Membership
P.O. Box 2328
Mission Viejo, CA 92690-2328

Check Box to indicate that you have questions and/or would like to be put in contact with other guild members.