

Hello Sewing Friends,

Here's what's new at Calico Patch... We're heading to Grand Rapids. I'm a full time instructor and here are my classes...



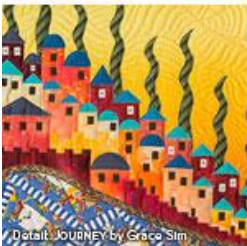
Quilt Week
GRAND RAPIDS MICHIGAN
Aug. 21-24, 2019
Learn more at QuiltWeek.com
NATIONAL BRAND PARTNER **JANOME**
WHAT'S NEXT

Still a few spaces left sign up at quiltweek.com

Next will be Quilt Expo in Madison WI.

WISCONSIN PUBLIC TELEVISION
NANCY ZIEMAN PRODUCTIONS
QUILT EXPO
QUILT EXPO 2019
SEPTEMBER 5-7, 2019
9am-6pm Thurs-Fri | 9am-5pm Sat
Alliant Energy Center Exhibition Hall | Madison, WI

Then teaching again at AQS Fall Paducah



Quilt Week
FALL PADUCAH KENTUCKY
Sept. 11-14, 2019
Learn more at QuiltWeek.com
NATIONAL BRAND PARTNER **JANOME**
WHAT'S NEXT

Here are my classes...
Sign up at quiltweek.com



Don't Forget our Quilt and Cruise in May of 2020?
Check it out at quiltandcruise.com !!!!

TOM & VICKI

Scroll Down for free pattern!

Quilt & Cruise With Us!
Calico Patch Designs
Vicki McCarty
Sew Cherished
Dawn Shuck
Multiple Wool Applique Hand Projects
Royal Caribbean
SYMPHONY OF THE SEAS
May 23-31, 2020
7 Night Eastern Caribbean!
Quilt and Cruise
More Info & Register at www.quiltandcruise.com
Book Early!
Space Limited!



Calico Patch

American Barn Trail Stitch-A-Long



Block 8
14¹/₂" Square"

American Barn Trail

Stitch-A-Long Block 8

14¹/₂" Square

Fabric Requirements

1/8th Yard Dark Gold

1/8th Yard Dark Floral

11" x 11" Blue Sky

7" x 11¹/₂" Green Floral (#1 Field)

3" x 10" Tan Floral (#2 Barn Yard)

4" x 9" Black (#3 Side Roof &

#12 Lower Roof, #13 Top Roof)

6" x 8" Brown (#4 Barn Front)

4" x 6" Dark Brown (#5 Bottom Barn Side,
#6 Top Barn Side)

6" Square Tan (#7-8 Rails, 9-11 Posts, #14 Door)

3" Square Black Print (#15 Door Panels)

2¹/₄" Square Quilt Block Fabric

Helpful Items

Applique Pressing Sheet

Fusible web

Sulky Tear easy Stabilizer

Tailors Chalk

calicopatchdesigns.com

calicopatchdesigns@gmail.com



155 Bluebank Road
Morehead, KY 40351
(606) 784-7235

Matthew 5:16

© 2019 Calico Patch, All Rights Reserved. Do not Duplicate.

American Barn Trail Stitch-A-Long Block 8

Design by Vicki McCarty, Calico Patch Designs
14.5" Square

General Directions: Please read all directions before starting. I use Lite Steam-A-Seam 2 for Appliques. Feel free to use the fusible web of your choice, where pattern calls for fusible web.

Cutting Directions:

Blue Sky Fabric

1- 10¹/₂" square

Dark Gold

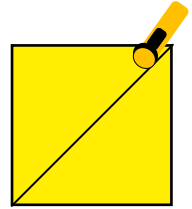
2- 2⁷/₈" Squares, sub cut once on the diagonal

2- 1¹/₂" x 33

Dark Floral

2- 2⁷/₈" Squares, sub cut once on the diagonal

2- 1¹/₂" x 33



Cut once
on the diagonal

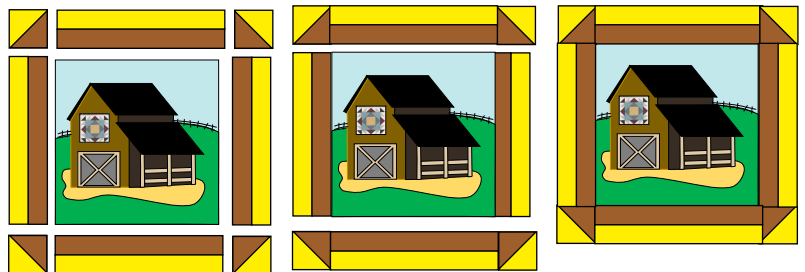
Sewing Directions:

Trace appliques patterns onto fusible web. The patterns are reversed. Fuse to the wrong side of the appropriate fabrics. Cut out applique pieces. Use picture on front of pattern for placement on Blue Sky fabric for background. Stitch down appliques with a blanket stitch. Trim Block to 10¹/₂" square.

Sew each 1¹/₂" Dark Gold to a 1¹/₂" Dark Floral strip together on the long sides. Press to the dark. Cut into four 2¹/₂" x 10¹/₂" strip sets. Sew together each 2⁷/₈" Dark Gold and 2⁷/₈" Dark Floral to make four half square triangles. Press to the dark. Trim each to 2¹/₂" square.

Lay block out as shown below. Sew in rows, sewing top row first. Press away from the half square triangles. Sew second row to include barn block. Press to the dark sashing. Sew bottom row and press away from half square triangles.

Sew rows together, pin at the seams for accuracy. Press. Trim block to 14¹/₂" square.

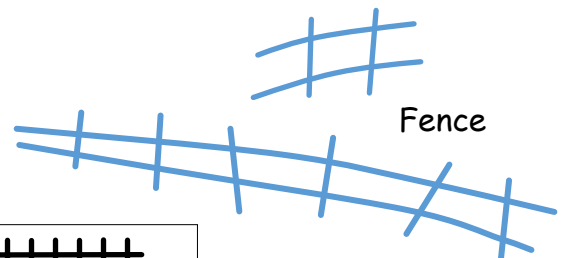


Trace the fence onto Sulky Tear easy Stabilizer. Pin fence in place beside so it appears to sit on the ridgeline running behind the barn.

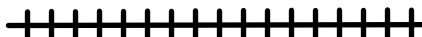
Sew along the tracings with a decorative stitch that looks close to barbed wire. I used stitch #1352 on my BERNINA and changed to the stitch length and width to make strands of wire. I stitched the fence posts with a satin stitch again changing the width and length. Be sure to tie a knot at the beginning and end of each post.

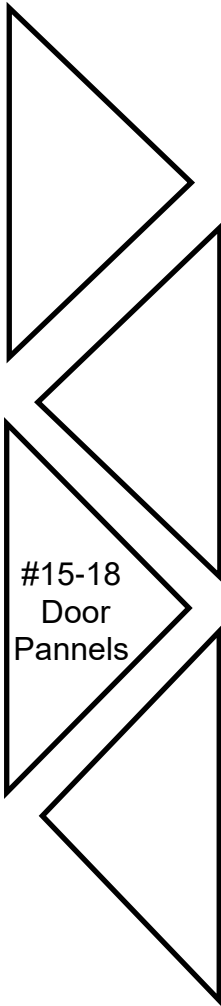
Now you are ready for the next block! Enjoy!

Free Downloaded pattern for personal use only.
Provided By Calico Patch Designs

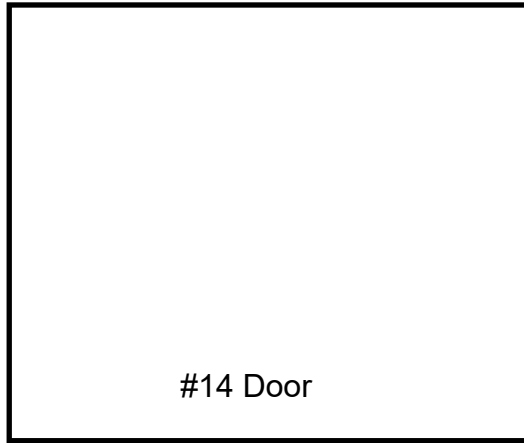


A decorative stitch like this makes a cute barbed-wire fence!





#15-18
Door
Pannels

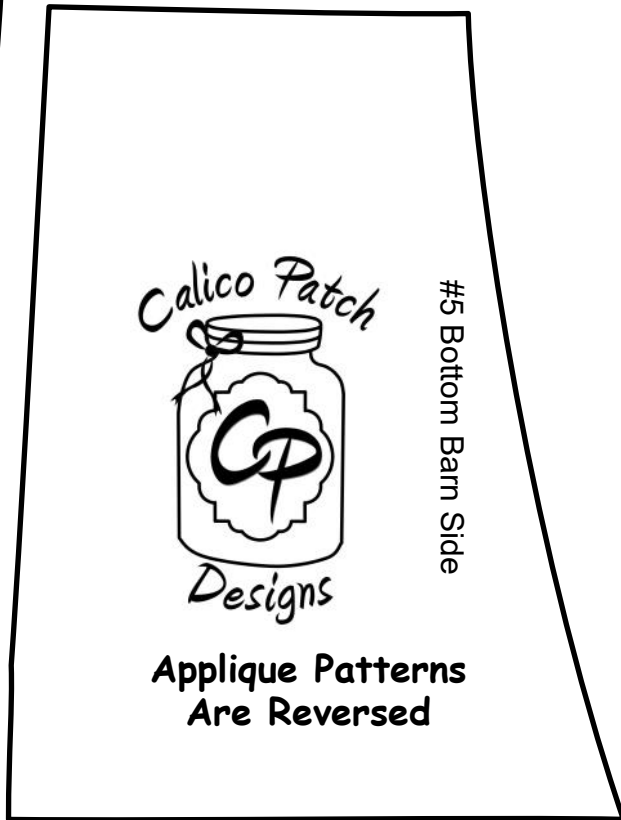


#14 Door



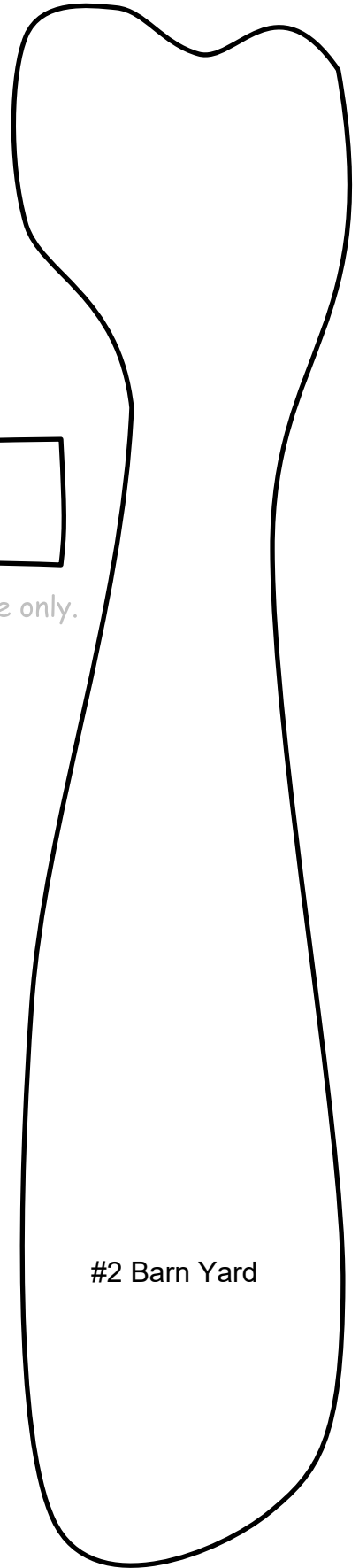
#6 Top Barn Side

Free Downloaded pattern for personal use only.
Provided By Calico Patch Designs



#5 Bottom Barn Side

**Applique Patterns
Are Reversed**

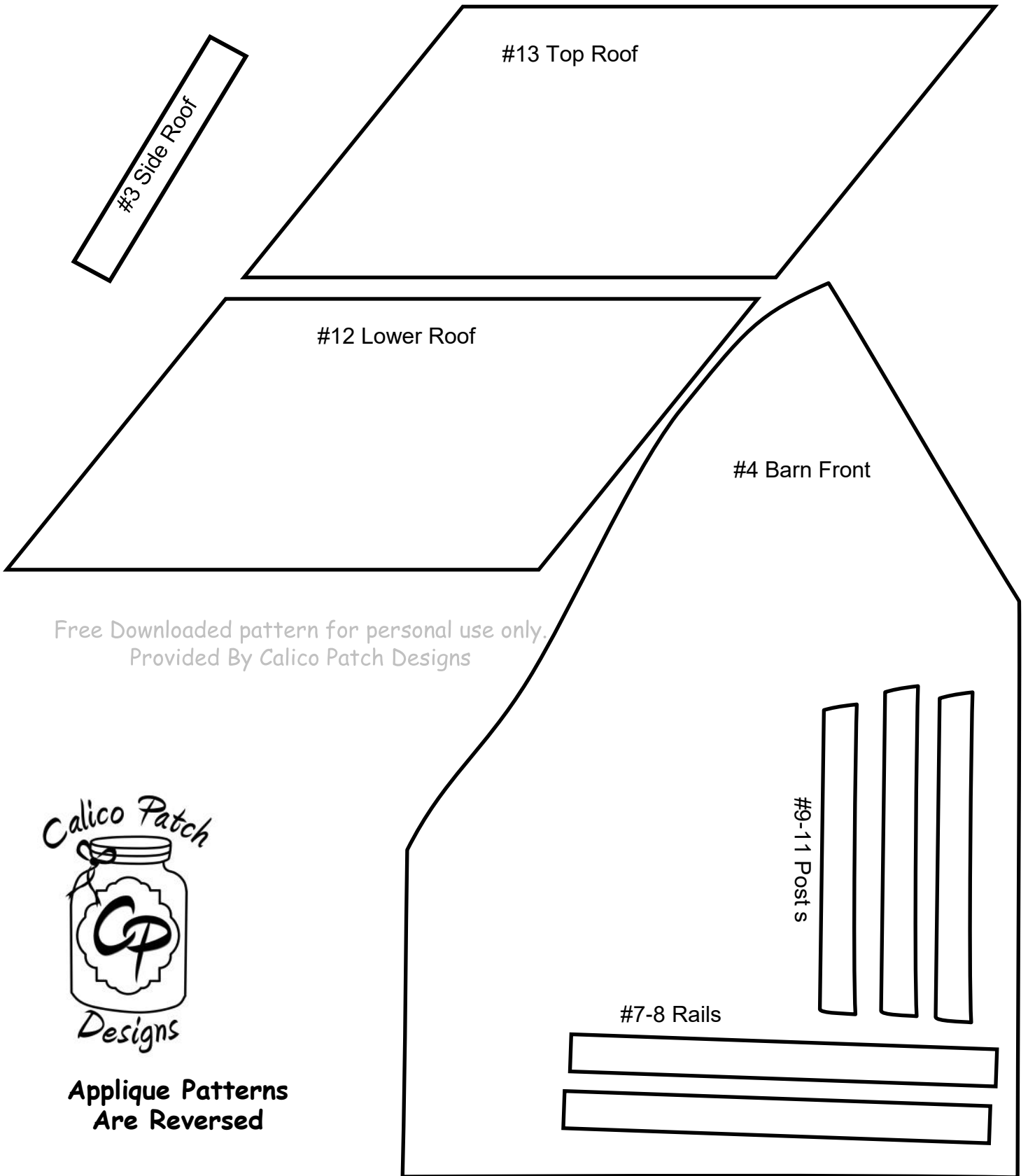


#2 Barn Yard

#1 Field

Fold on dotted line and place edge on
dotted line on page 3 to trace full size
applique pattern.

#1 Field –Fold on dotted line on page 2 and place edge here to trace full size applique pattern .



Free Downloaded pattern for personal use only.
Provided By Calico Patch Designs



**Applique Patterns
Are Reversed**