

American Barn Trail Stitch-A-Long Block 5 14 1/2" Square

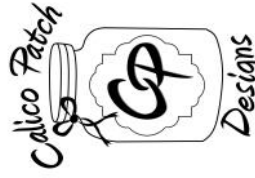
Fabric Requirements

- 1/8th Yard Dark Gold
- 1/8th Yard Dark Floral
- 11" x 11" Blue Sky
- 3 1/2" x 7" Solid Green (#1 Right Hillside)
- 11 1/2" x 3" Light Green (#2 Field)
- 3" x 4" Dark Green Floral (#3 Left Hillside)
- 11 1/2" x 34" Tan Floral (#4 Barn Yard)
- 7 1/2" x 6" Beige (#5 Barn)
- 4 1/2" Square Tan (#6 Lower Wall, #7 Upper Wall)
- 6" x 9" Black (#8 Lower Roof, #9 Roof, #10 Upper Roof, #13 Door Trim)
- 2 1/2" x 2" Green (#11 Tree)
- 3 1/2" Square Light Tan (#12 Door)
- 2 1/4" Square Quilt Block Fabric

Helpful Items

- Applique Pressing Sheet
- Fusible web
- Sulky Tear easy Stabilizer
- Tailors Chalk

calicopatchdesigns.com
calicopatchdesigns@gmail.com



155 Bluebank Road
Morehead, KY 40351
(606) 784-7235

Matthew 5:16

© 2019 Calico Patch, All Rights Reserved. Do not Duplicate.



American Barn Trail Stitch-A-Long



Block 5
14 1/2" Square"

American Barn Trail Stitch-A-Long Block 5

Design by Vicki McCarty, Calico Patch Designs
14.5" Square

General Directions: Please read all directions before starting. I use Lite Steam-A-Seam 2 for Appliques. Feel free to use the fusible web of your choice, where pattern calls for fusible web.

Cutting Directions:

Blue Sky Fabric

1- 10¹/₂" square

Dark Gold

2- 2⁷/₈" Squares, sub cut once on the diagonal

2- 1¹/₂" x 33

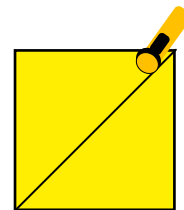
Dark Floral

2- 2⁷/₈" Squares, sub cut once on the diagonal

2- 1¹/₂" x 33

Light Green Fabric

1- 2³/₄" " x 10¹/₂" strip



Cut once
on the diagonal

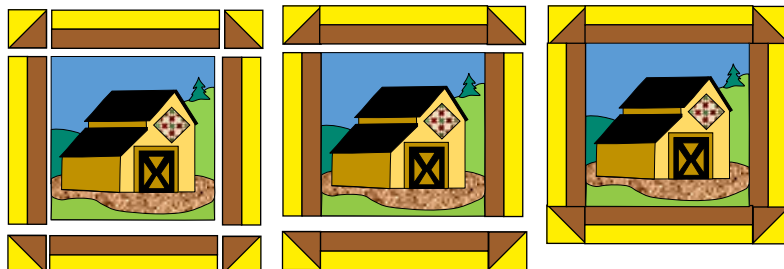
Sewing Directions:

Trace appliques patterns onto fusible web. The patterns are reversed. Fuse to the wrong side of the appropriate fabrics. Cut out applique pieces. Use picture on front of pattern for placement on Blue Sky fabric for background. Stitch down appliques with a blanket stitch. Trim Block to 10¹/₂" square.

Sew each 1¹/₂" Dark Gold to a 1¹/₂" Dark Floral strip together on the long sides. Press to the dark. Cut into four 2¹/₂" x 10¹/₂" strip sets. Sew each Dark Gold and Dark Floral 2⁷/₈" cut pieces to make four half square triangles. Press to the dark. Trim each to 2¹/₂" square.

Lay block out as shown below. Sew in rows, sewing top row first. Press away from the half square triangles. Sew second row to include barn block. Press to the dark sashing. Sew bottom row and press away from half square triangles.

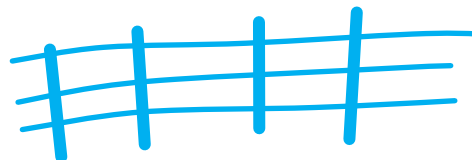
Sew rows together, pin at the seams for accuracy. Press. Trim block to 14¹/₂" square.



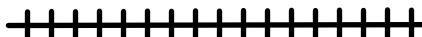
Trace the fence onto Sulky Tear easy Stabilizer. Pin in place beside so it appears to sit on the ridgeline running behind the barn. Sew along the tracings

with a decorative stitch that looks close to barbed wire. I used stitch #1352 on my BERNINA and changed to the stitch length and width to make strands of wire. I stitched the fence posts with a satin stitch again changing the width and length. Be sure to tie a knot at the beginning and end of each post.

Now you are ready for the next block! Enjoy!



A decorative stitch like this makes a cute barbed-wire fence!



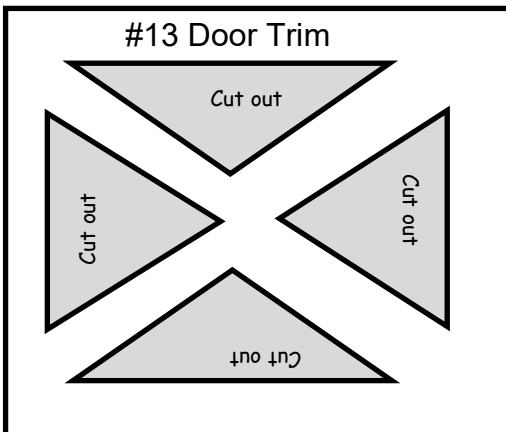
American Barn Trail
Block 5

#1 Right Hillside

**Applique Patterns
Are Reversed**

#3 Left side Hill

#13 Door Trim



#4 Barn Yard

#2 Field

American Barn Trail Block 5

Applique Patterns
Are Reversed

