

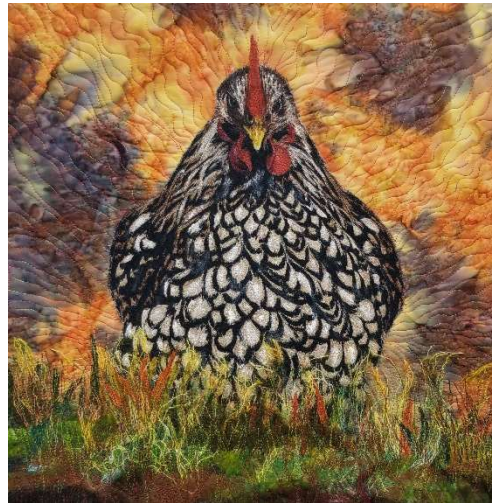


# Thread Painting with Embellishments

## Student Supply List

**INSTRUCTOR:** Deb Deaton  
303-349-5150  
[deb@djsfiberarts.com](mailto:deb@djsfiberarts.com)  
[www.djsfiberarts.com](http://www.djsfiberarts.com)

**SKILL LEVEL:** Beginner-Intermediate



### Teacher's Note:

Thread painting is a technique where threads are used to create intricate, painterly effects on fabric. In this class, students will learn how to use various stitching techniques to mimic the look of a painted canvas, adding depth, texture, and color to their textile art. You will use various threads to achieve rich textures and vibrant imagery, transforming your fabric panel into an intricate work of art. If you have any questions on supplies below, never hesitate to reach out!

### Supply List:

1. Panel of your choice. Quilt shop will have many to choose from!
2. Sewing Needles: 90/14 TOPSTITCH and 80/12 (DO NOT USE UNIVERSAL NEEDLES)  
I use Organ or Microtex needles.
3. Any fibers you want to bring, i.e., wool roving, tulle, rattail, yarns, fabric and thread snippets, etc. We will be adding those to our pieces, as appropriate. I will be bringing up quite a bit for you to play with!
4. Threads: Bring threads that match the colors that are in your panel. Be creative! For example, when I did the Raven, I used a blue black, black, dark blue, and metallic. I also used an orange. Thread choice is up to you. I love Aurifil, Superior and Madera threads.

- I don't use embroidery threads in my work, but that's a personal choice. If you love them, use them! For the bobbin, you will be using black for the most part but bring grey as well. I love Bottom Line bobbin thread by Superior Threads. Again, a personal choice.
5. Tsukineko Fabrico Fabric Markers. These will be used to add highlights to your piece. Black will be the main color you will need. I will be bringing up mine as well, so don't worry if you can't find them.
  6. Sewline or Bohin Ceramic Fabric Pencil. I love this because its sharp and gives you a clean line.
  7. Backing and Batting. I like to use a lighter backing so you can see all the fabulous work you did on the back! Batting is a personal choice as well. All my art quilts, I only use wool or silk batting.
  8. Basting Spray: You can make your sandwich prior to class so you'll be ready to go!
  9. Quilting Gloves- My favorite is GrabARoo's but bring what you have!
  10. Sewing machine in good working order that can drop the feed dogs and do FREE MOTION quilting and has a free motion foot. **Please know how your machine can be setup for free motion quilting!!**
  11. Scoop or Glide Free Motion Foot. Many machines come with one, but if you don't have one, I order mine from Amazon and it's called the "Big Foot". It's purple and is universal for all LOW SHANK machines. You must have this to glide over any fibers you are going to add.
  12. Regular Free Motion foot for sewing machine
  13. Bring all sewing supplies!

**Let's have fun!!**

**THERE ARE NO RULES! JUST ART!**

---

### **Cancellation and Refund Policy**

**CANCELLATIONS FOR 2-5 DAY CLASSES (Retreats will have their own policy):** For classes listed as 2-5 days, cancellation must be made **45-days** prior to the first day of the class for a refund. Cancellation less than 45 days before the first day of class **forfeits all registration monies paid**. On occasion, classes will cancel due to lack of registration. If the class is cancelled due to inadequate enrollment, you will be refunded. To minimize the risk that you might purchase your fabrics and supplies, only to find out that the class had to be cancelled, we recommend that you call the teacher, or the quilt shop, to confirm if that class has met its minimum enrollment and will go on as scheduled.