



MAKE IT PERSONAL

Patchwork Oven Mitt

Instructions by Donna Babylon

Materials Needed:

3 scraps of fabric (each about 9" square) for patchwork
 1/4 yard lining fabric
 9-inch square fabric for bias binding
 1/2 yard heat-reflective batting (such as Insul-Bright®)
 1/4 yard silver coated heat-resistant fabric (like used
 for ironing board covers)
 optional: pearl cotton or embroidery floss
 optional: hand needle
 thread to match lining fabric
 straight pins
 fabric scissors



If you want a quicker version of this pattern, just use pattern piece D to cut the front. I love to make these for gifts and I have such fun selecting the fabrics! A fat quarter works perfectly for a one-piece front.

STEP ONE: Prepare the Hanger

1. Cut strip 2" by 5". Fold hanger strip in half lengthwise with wrong sides together and raw edges matching. Press (fig. 1).
2. Open strip and press raw edges toward the center fold (fig. 2).
3. Now press the strip in half again so it is smooth and flat and all edges are even (fig. 3).
4. Machine stitch along both folded edges (fig. 4).
5. Fold hanger strip in half to form a loop (fig. 5). Set aside for now.

fig. 4



fig. 5

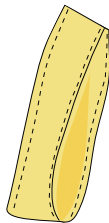


fig. 1

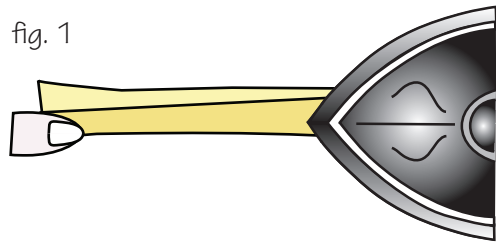


fig. 2

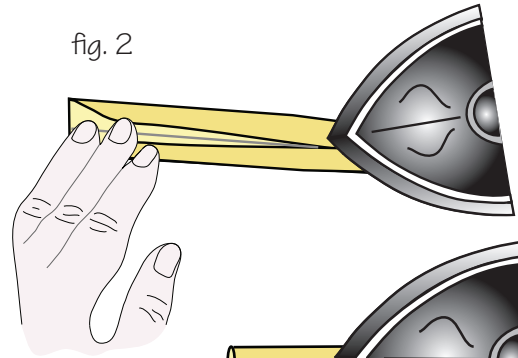
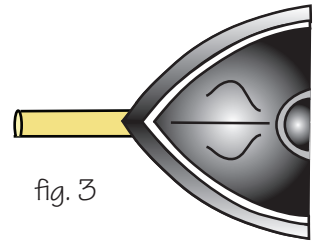


fig. 3



STEP TWO: Piecing the Mitt Front

Note: Use 1/4" seam allowance on steps 1 and 2.

1. Place A & B right sides together and stitch as shown in fig. 6. Press seams together toward one side.
2. Place C right sides together on previously stitched unit as shown in fig. 7. Press seams together toward one side. The finished pieced front is shown in fig. 8.
3. Place the wrong side of the pieced front against the shiny side of the heat-reflective batting. Make sure all edges are even.
4. Using one strand of pearl cotton thread (that's what I prefer) or 3 strands of embroidery floss, hand stitch a running stitch along the seams (fig. 9). If you want to add more hand stitches—go to it! This is your oven mitt.
5. Baste hanger in place (fig. 9).

fig. 6

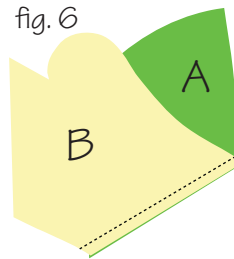


fig. 7

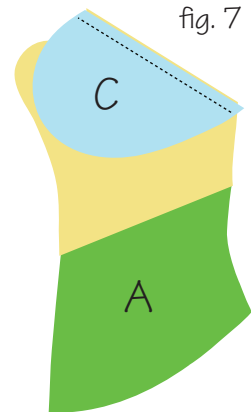


fig. 8

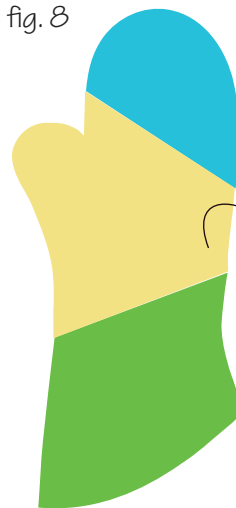
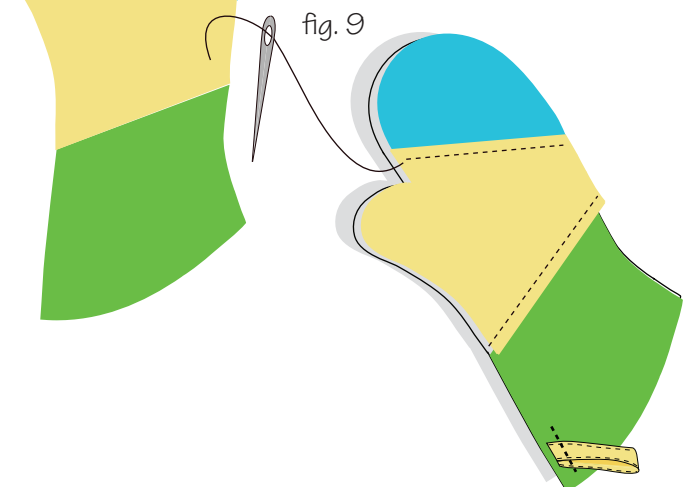
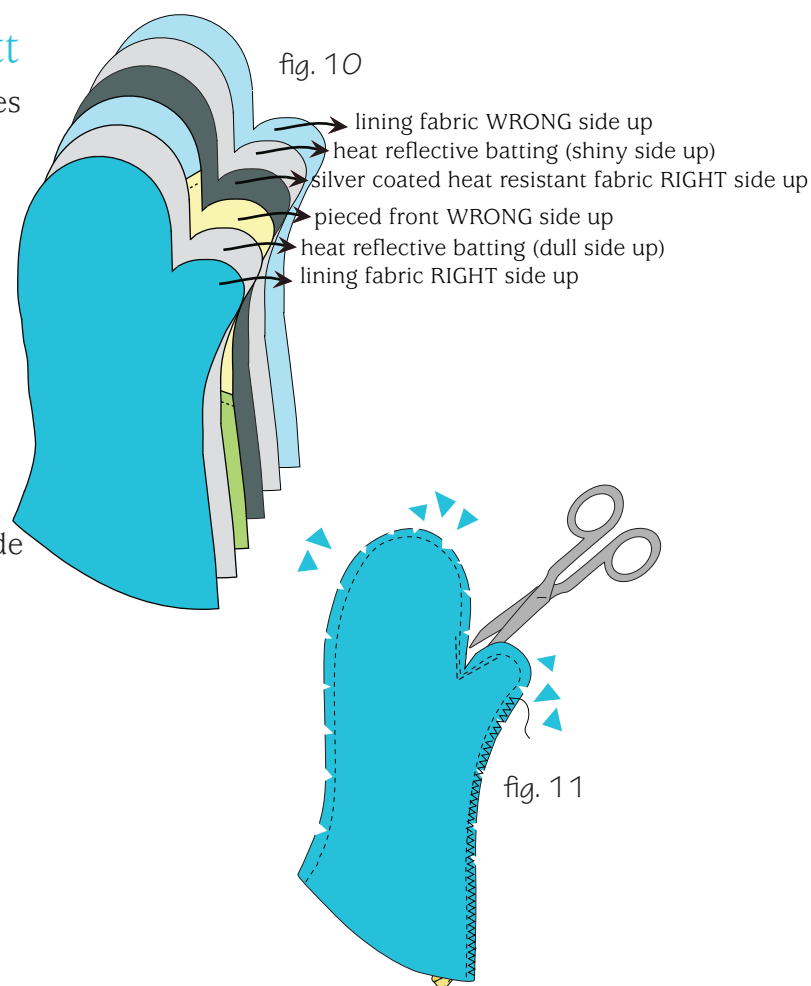


fig. 9



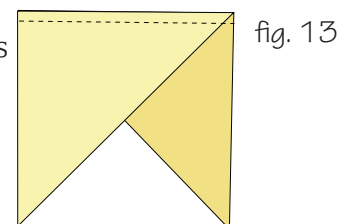
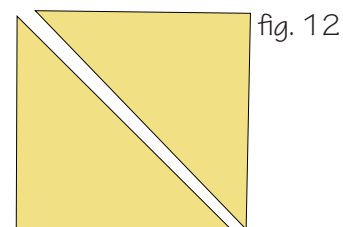
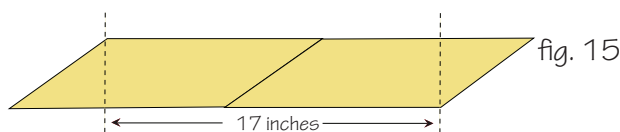
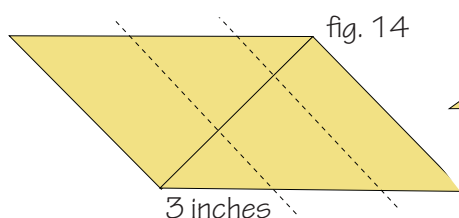
STEP THREE: Layer the Mitt

1. On your work surface, place the pieces as shown in fig 10. Make sure all outside edges are even.
2. Using a $\frac{1}{2}$ " seam allowance, stitch around the outside edge of the mitt. Double stitch the inside thumb seam because this area gets a lot of stress. Then zigzag finish the seam and trim seam allowance close to the zigzag stitching. Cut small notches in all curved edges to help create a smooth edge when the mitt is turned right side out (fig. 11). Then, turn the mitt right side out. Press smooth.

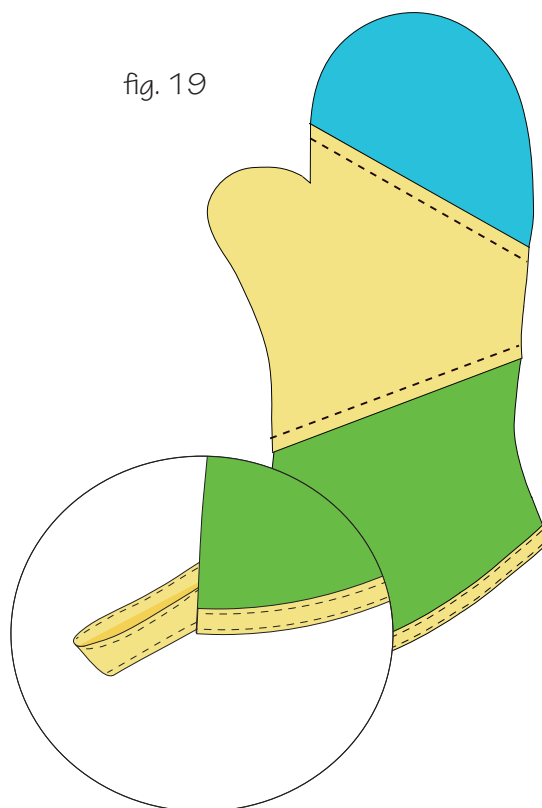
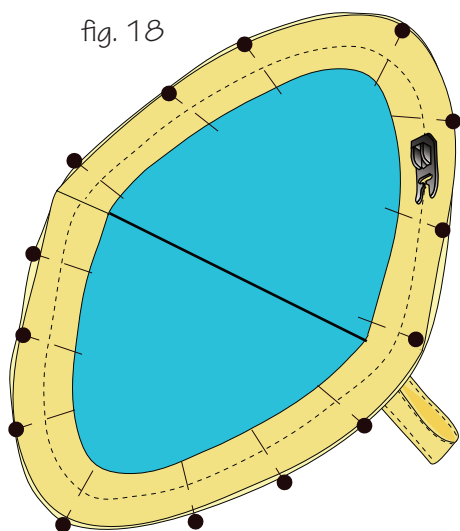


STEP FOUR: Bind the Mitt

1. Cut 9 inch-square designated for binding in half to create two triangles (fig. 12).
2. Using $\frac{1}{4}$ " seam allowance, place triangles right sides together and stitch as show in fig. 13. Press seams toward one side.
3. Open and cut 3 inch slices (fig. 14)
4. Trim ends so they are straight and the remaining section is 17 inches long (fig. 15).
5. Stitch ends together (fig. 16). Press in half with wrong sides together (fig. 17).



6. Open the mitt so the wrong sides show. Pin the binding to the lining so all raw edges are even and the folded edge of the binding is toward the inside (fig 18). Stitch through all layers using a $\frac{1}{2}$ " seam allowance. Backstitch at beginning and end of this seam.
7. Now neatly wrap the binding toward the front. The folded edge of the binding should cover the stitching you did in step 6. Press the binding so it is smooth with no tucks or pleats. Stitch along the folded edge through all layers (fig. 19). If you would like, stitch another row against the opposite edge of the binding. This second row of stitching is for decorative purposes only.



Ask Home Dec Beck

What is pearl cotton?

Beck Says:

“Pearl cotton is a 2-ply high sheen non divisible twisted thread that is used in many forms of needlework. Find it with other hand embroidery supplies. The skeins are usually twisted like a fancy pastry.”

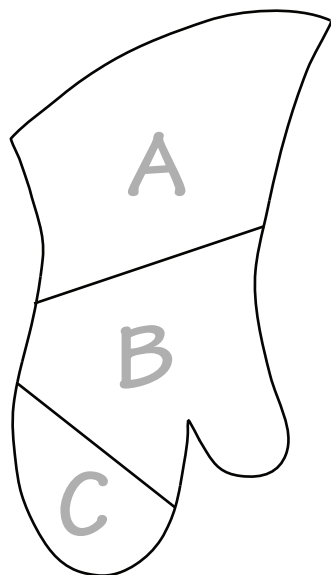


Cutting Pattern Pieces

1. Use letter size paper (8.5" x 11").
2. Scale at 100%.
3. Cut along dotted lines. - - - - -
4. Tape pages together—match targets.
Your pattern piece arrangement
will look like this:

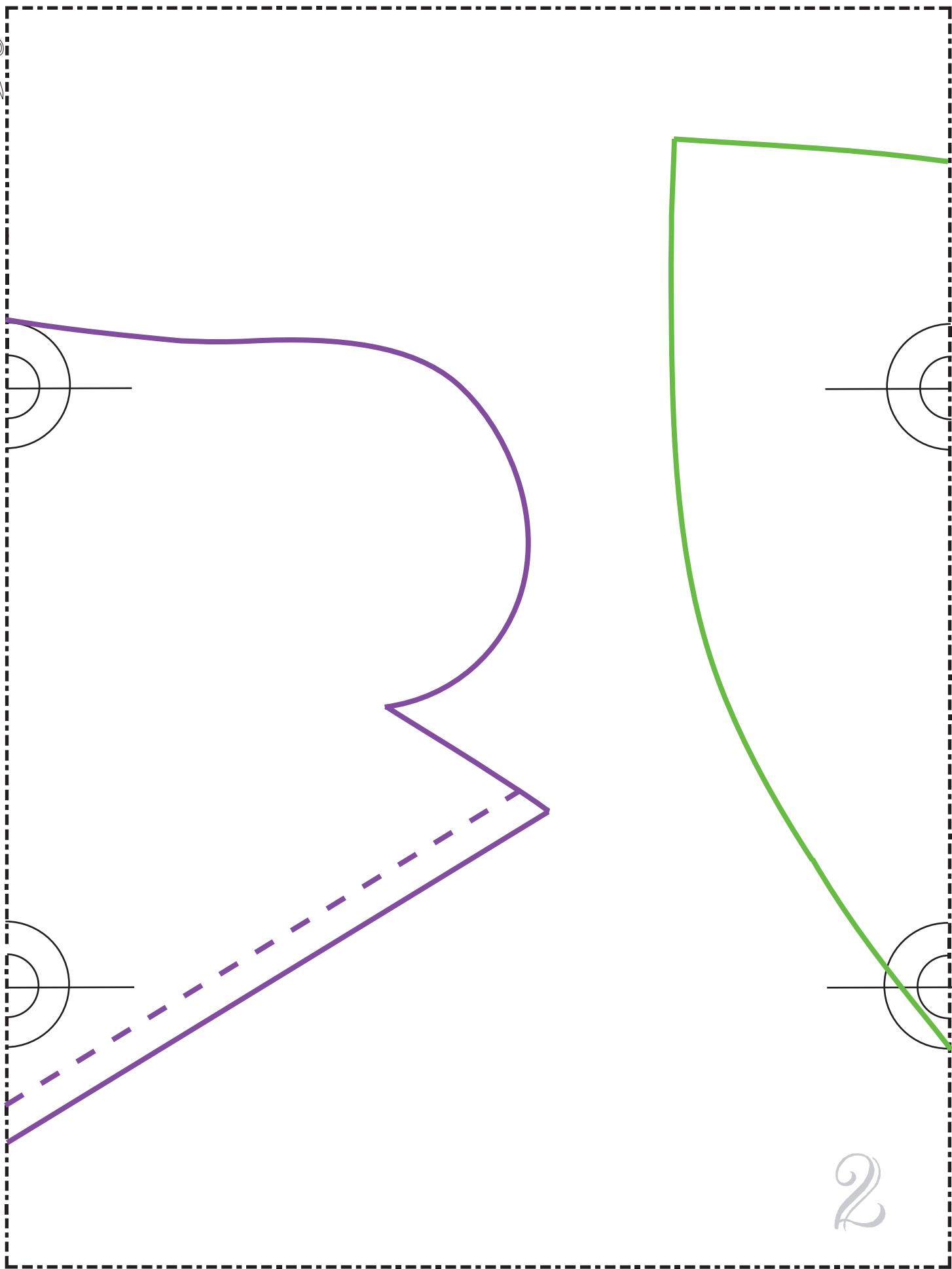


5. Cut out individual pattern pieces.



NOTE: We tested printing these pages on many brands of printers. Most of the time, they printed so that every line and target matched exactly. However, with a few printers, the targets printed slightly off. We have no explanation as to why this happens. If this happens to you, it is more important to match the pattern lines than the targets.



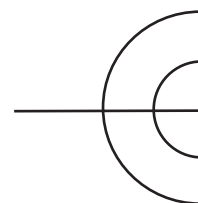
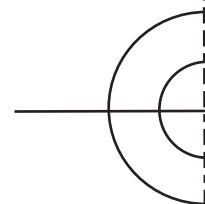


2

A

More Splash Than Cash®
©2021, Donna Babylon

Cut 1



4



D

More Splash Than Cash®

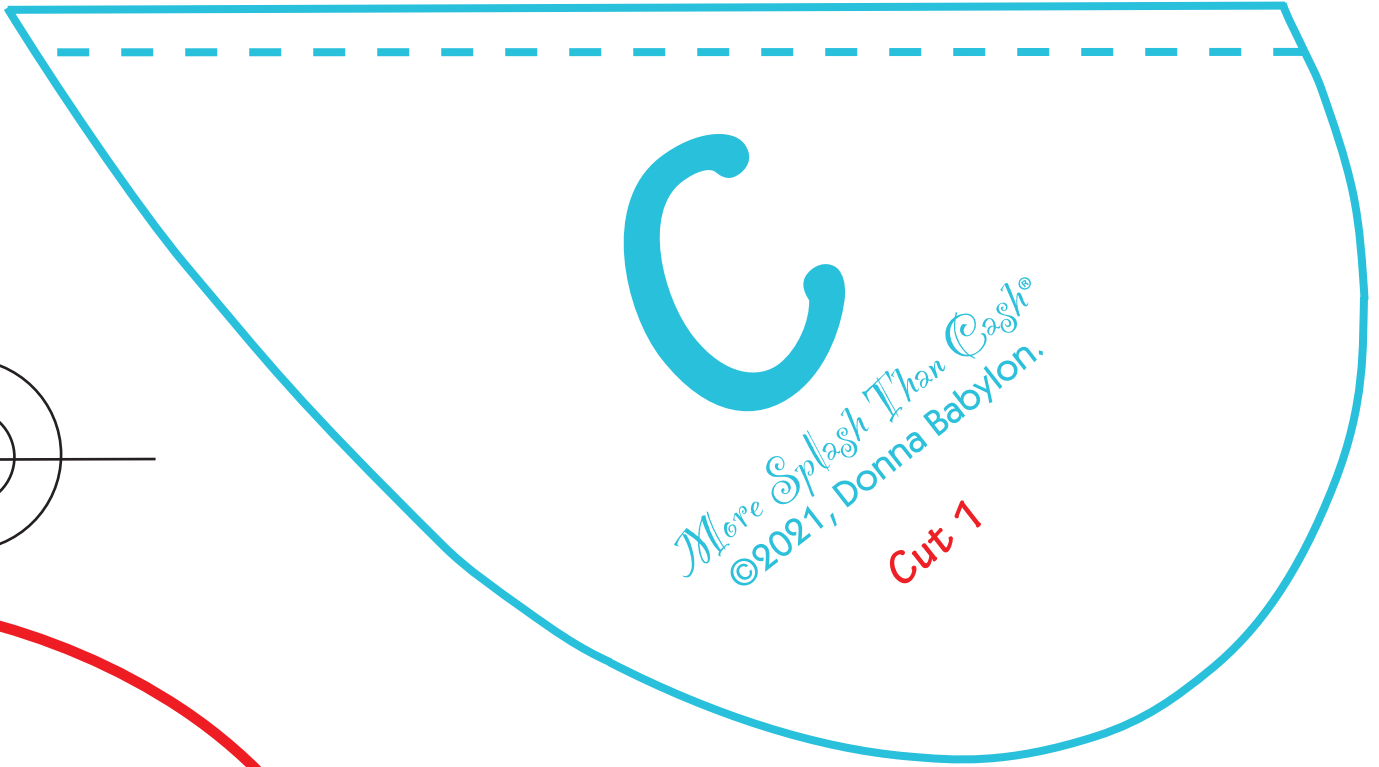
©2012, Donna Babylon.

Cut 1 from silver coated heat-resistant fabric

Cut 2 from heat-reflective batting

Cut 2 from lining fabric

Note: If you prefer, cut one from decorator fabric if you don't want to piece the front. Nice alternative!



More Splash Than Cash®
©2021, Donna Babylon.
Cut 1

