



Designed by Donna Babylon

Prefused and Laser Cut Fabric Letters from www.SayItWithApplique.com

Skill Level: Beginner with a little experience

Materials Needed:

Outer Layer*

1³/₈ yards of 60-inch-wide heavy-weight fabric (suggested fabrics: denim, twill, canvas, decorator fabric, painter's drop cloth)

-or-

2¹/₄ yards 45-inch-wide fabric

Lining*

2¹/₄ yards cotton fabric

-or-

1³/₈ yards of 60-inch-wide heavy-weight fabric (suggested fabrics: denim, twill, canvas, decorator fabric, painter's drop cloth)

Top Band and Handles

1/4 yard either 45- or 60-inch-wide fabric

- Paper-backed Fusible Webbing: 1/2 yard (such as Shades Soft-Fuse or Heat 'n Bond lite)
- 3/4 yard 1-inch-wide webbing for handles
- Thread to match laundry bag fabrics
- [Got Quarters?](http://www.SayItWithApplique.com) or [Toxic/Biohazard](http://www.SayItWithApplique.com) symbol exclusively from www.SayItWithApplique.com
- Rayon thread to match appliqué letters
- Frixion® Fabric Marker

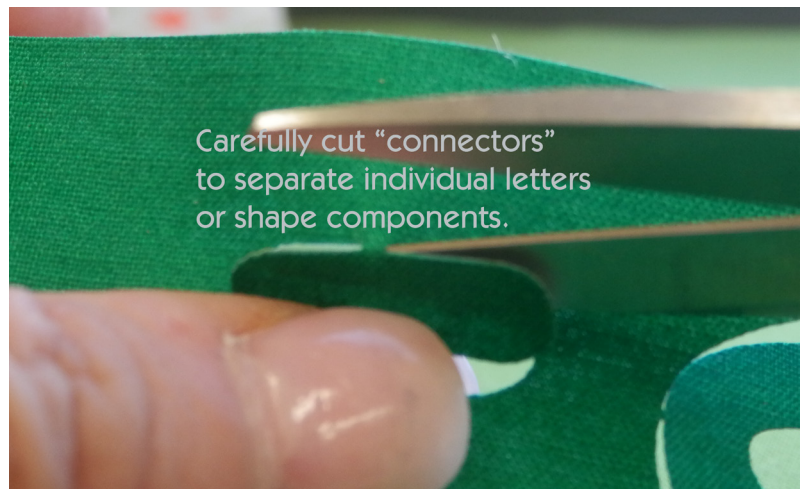
*For durability, one layer should be a heavier fabric as described above. The yellow bag was constructed from canvas as the outer layer and quilt fabric as the lining. The turquoise bag was made from decorator fabric as the outer layer and canvas as the lining.

Cutting Instructions

1. From the 60-inch-wide fabric, cut one rectangle that measures 27" by 53½". From the 45-inch-wide fabric, cut two rectangles, each 27" by 26¾". Designate one fabric as the outer layer and one fabric as the lining.
2. For the top band, either cut one strip of fabric 3½" by 53½" or two bands, each 3½" by 26¾"- (depending on the width of fabric you are using for the band).
3. For the handles, cut two strips each 3½" by 12". Also cut the webbing into two, 12" lengths.
4. Cut an 18-inch square from both the outer and lining fabrics plus the paper-backed fusible webbing.
5. Following manufacturer's instructions, fuse the webbing to the wrong side of the outer fabric. Remove the paper backing and place the wrong side of the lining fabric against the exposed fusible. Fuse lining fabric to the outer fabric. Cut a 17" circle from this unit. This is for the bottom of the laundry bag.

Appliqué Instructions

1. Find the exact center of the bag front. Using this as a starting point, determine the placement of the appliqué. There is no right or wrong place — whatever pleases your eye.
2. Once the placement is determined, carefully snip the "connectors" that are holding either the letters or the biohazard symbol together (the connectors are there to make sure all parts and pieces are included in the appliques you purchase).
3. Remove the paper backing.
4. Place the appliques where you want them and press to secure. Use a hot, dry iron. NO STEAM! Suggested Layouts:



TOXIC



GOT
quarters?

5. Stitch around the edges of the shapes and letters to secure. Use any stitch that you want: straight, zig-zag, blanket, or satin.

Sewing Instructions

Note: All seam allowances are $\frac{1}{2}$ " except where noted.

1. Fold the 60-inch-wide fabric in half right sides together so it measures approximately 27" by $26\frac{3}{4}$ ". Stitch creating a large tube. Press seam open. Or, place the two 27" by $26\frac{3}{4}$ " rectangles right sides together and stitch along each side. Press seams open.
2. Stitch the band strip(s) right sides together along the short ends to form a circle. Press seams open. Now fold and press the wrong sides of the band together so it measures $1\frac{3}{4}$ ".
3. Prepare two handles by folding under and pressing $\frac{1}{2}$ " along one long end. Place the webbing along the opposite edge of the fabric and wrap the fabric so the webbing does not show and the fabric is evenly distributed. Stitch along the folded edge of the fabric. If you want to, add additional stitch lines for added texture.



4. Cut a 45° triangle from each end as shown.



Assembly Instructions

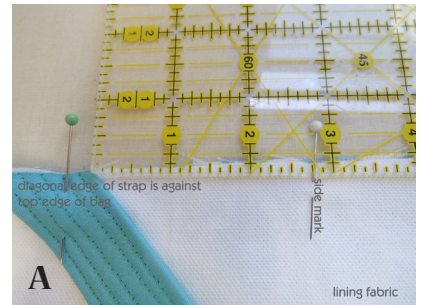
Note: All seam allowances are $\frac{1}{2}$ " except where noted.

1. Place the wrong side of the lining inside and against the wrong side of the bag outer layer. You should not see any open seams. Pin along the top edge to secure. Then carefully smooth the lining fabric in place and pin a few pins along the bottom edge. Be careful that the lining does not shift (twist) inside the bag or the finished project will be distorted.
2. Divide the bottom and top edges into four equal sections. To do this, fold the bag in half to find the center back. Pin. Then pin directly opposite for the center front. Then place these two pins together and pin the outer folded edges to divide the circumference into four sections.
3. Fold the circle in half, then half again to divide it into four sections. Pin the other folds to mark the lines.
4. Turn the entire bag unit so the lining fabric is now on the outside. Pin the bottom to circle matching the previously designated quarter section marks. Adjust if necessary. Then pin the remaining circumference of the bottom circle to the bag; ease to fit if necessary. Make sure the pins are on the lining side of the lining.
5. Once the bottom is pinned in place, stitch bottom circle to the bag body. Take your time doing this as it is a little awkward (but not impossible!) to sew these shapes together. For added strength, stitch again over the previous stitching. Finish the raw edges of this seam by serging or a zigzag stitch. Trim the seam allowance to the finishing stitches for a tidy appearance. Now turn the bag right side out
6. Talk about awkward things to do, but now you have to press the bottom circle seam smooth. To do this, carefully insert your iron into the bag opening and use the tip of the iron to press the seam as smooth and flat as possible.

7. Along the top edge, find the two side marks. On the lining side of the bag, measure out from the mark $2\frac{3}{4}$ " on both sides and pin. Arrange the handle as shown with the diagonal raw edge of the handle against the raw edge of the bag **(A, B)**. Pin in place. Stitch several times back and forth across the band to secure.

8. Now place the raw edges of the folded band against the lining of the bag. Match the top edges evenly and pin. Stitch the band to the bag.

9. You are almost done! This next step might seem like a waste of time, but I found it makes a nicer and cleaner finish. It's called understitching (a technique usually used in fashion sewing). The purpose of understitching is to prevent the lining from rolling so you can see it from the front. In fashion sewing it is used in neckline and arm facings. To do this on the bag, press the top band smooth and away from the bag; make sure the seam allowance is against the lining **(C, D)**.



10. Change the color of thread if necessary, and stitch right along the pressed seam **(E)**. Now when you arrange the band against the front, the lining has much less of a chance of peaking over the top edge.

11. Last step! Fold over and arrange the band against the front of the bag and stitch along the folded edge to secure in place **(F)**.



Enjoy!