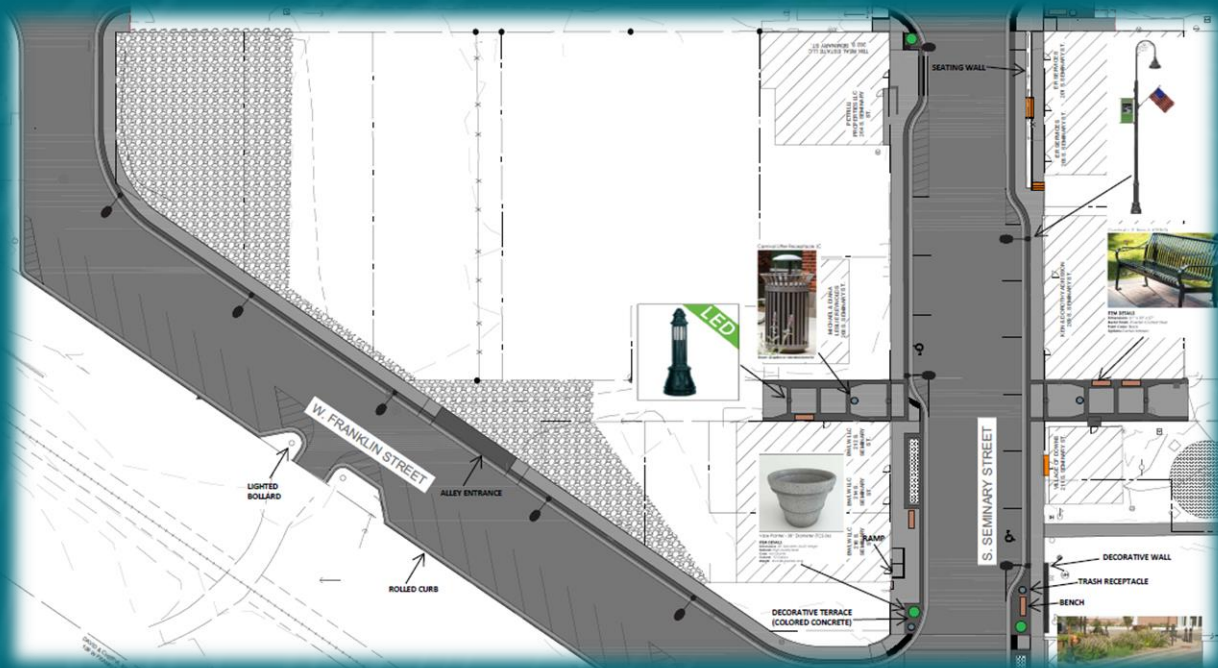


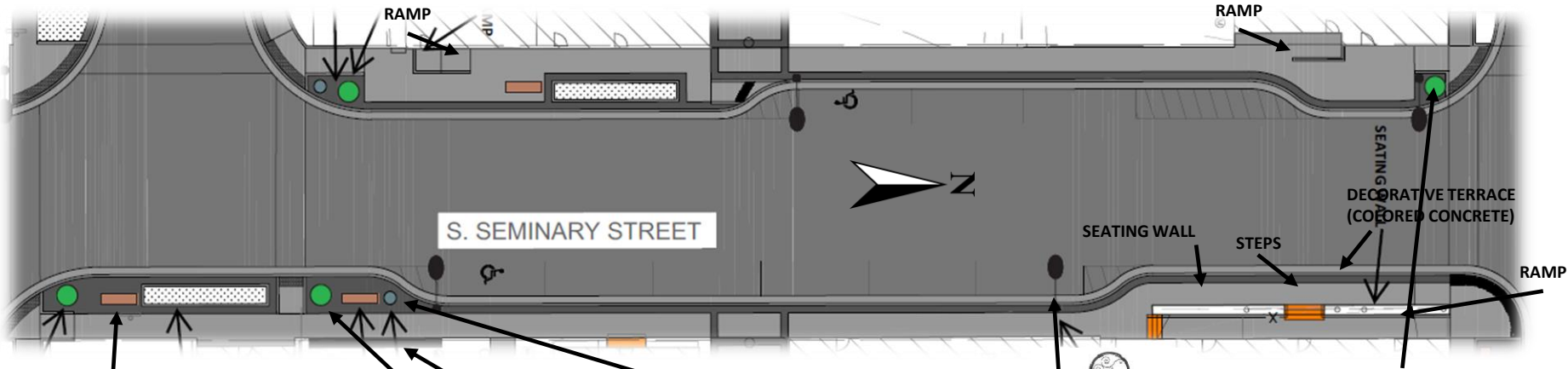
DOWNTOWN STREETScape PHASE 1 FINAL DESIGN



Public Information Meeting

March 11, 2025

SEMINARY STREET



Carnival - 5' Bench (CRB-5)



ITEM DETAILS

Dimensions: 61" x 33" x 27"
 Metal Finish: Powder Coated Steel
 Paint Color: Black
 Options: Center Armrest



DECORATIVE WALL

Carnival Litter Receptacle (LC)



Shown: 32-gallon w/ elevated dome lid

16' LIGHTING
 WITH BANNERS



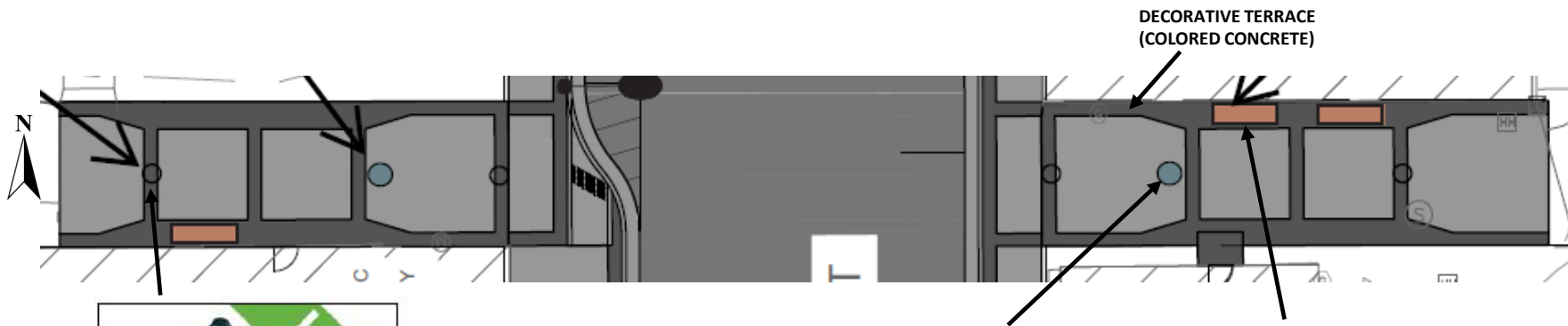
Base Planter - 38" Diameter (TC2-36)

ITEM DETAILS

Dimensions: 38" Diameter; 33.25" Height
 Material: High-Quality Resin
 Color: Ash Granite
 Volume: 72 Gallons
 Weight: 35.5 LBS (planter only)

MSA

MID-BLOCK ALLEYWAYS



LIGHTED BOLLARDS

Carnival Litter Receptacle (C



Shown: 32-gallon w/ elevated dome lid

Carnival - 5' Bench (CRB-5)



ITEM DETAILS

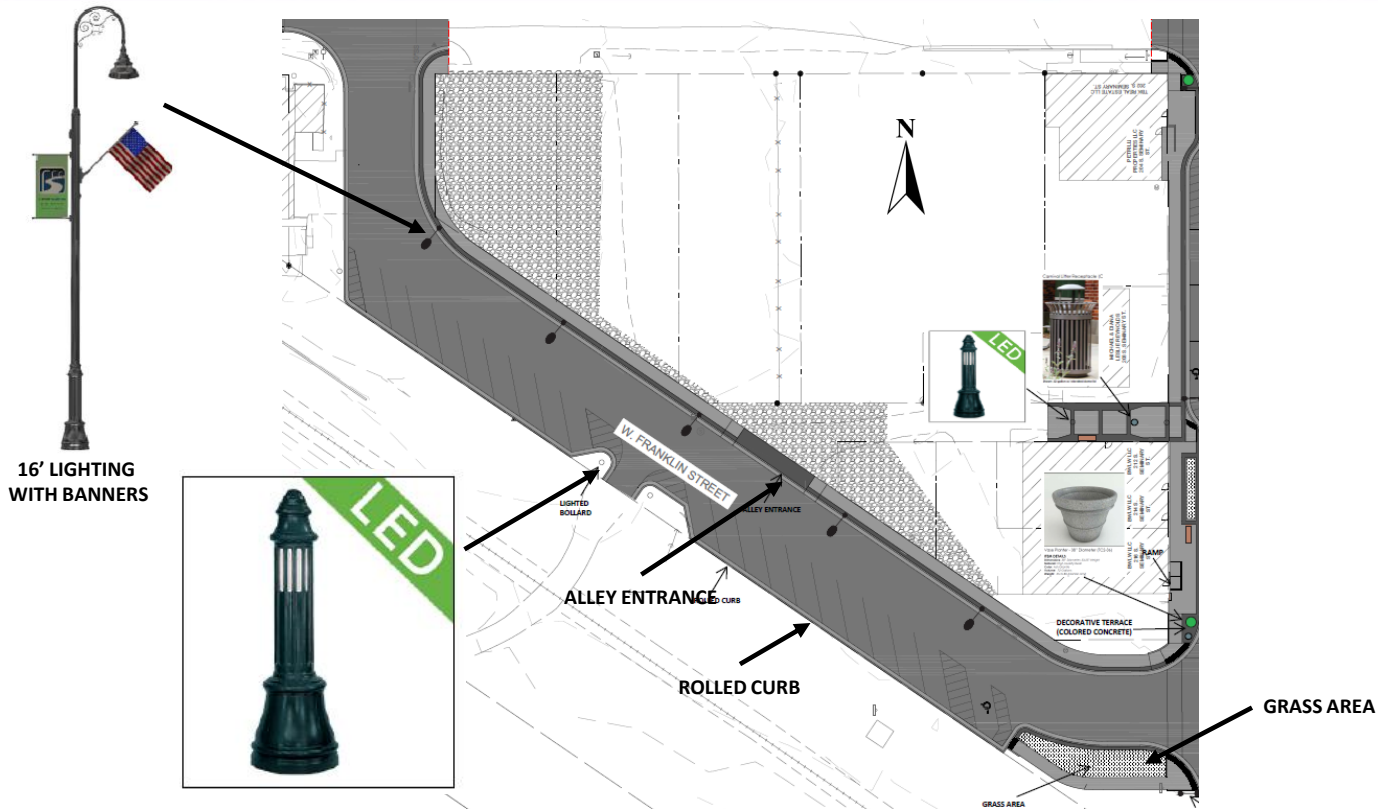
Dimensions: 61" x 33" x 27"

Metal Finish: Powder Coated Steel

Paint Color: Black

Options: Center Armrest

FRANKLIN STREET



The image contains two detailed site plan diagrams illustrating vehicle maneuvering for a school bus and a single-unit truck. Both diagrams show the same set of properties: TBK REAL ESTATE LLC (202 S. SEMINARY ST.), PETRILLI PROPERTIES LLC (204 S. SEMINARY ST.), and E R SERVICES (205 S. SEMINARY ST. and 201 S. SEMINARY ST.).

Left Diagram: S-BUS 40 - Large School Bus (84 pass.)

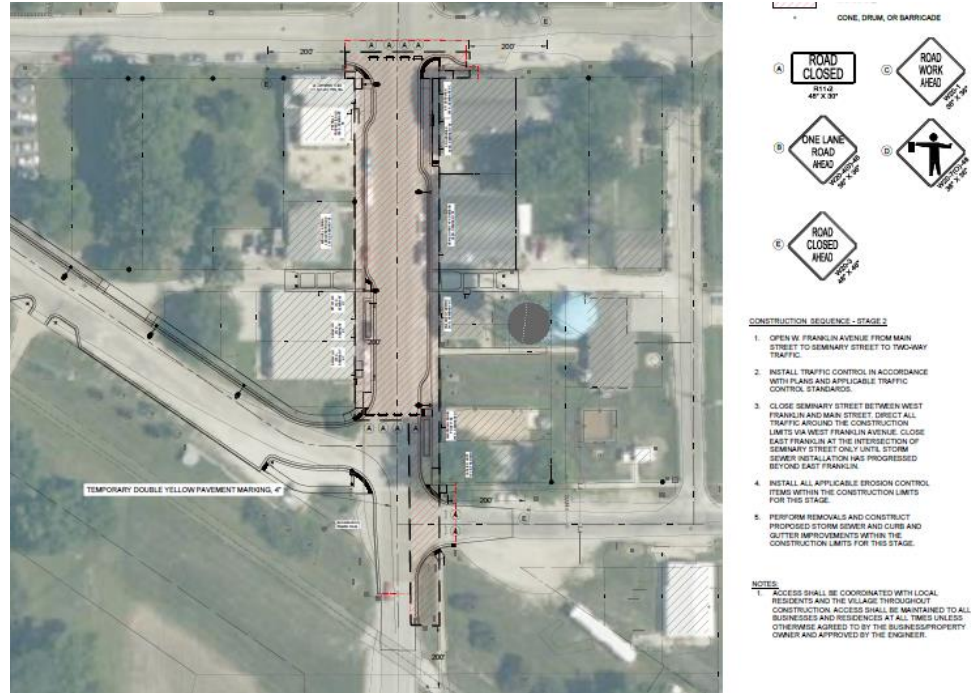
- Vehicle:** S-BUS 40 - Large School Bus (84 pass.)
- Dimensions:** 40,000ft, 8,000ft, 10,140ft, 1,070ft, 8,000ft, 5,00s, 39,400ft
- Maneuver:** The bus is shown making a U-turn from the street into the driveway of E R SERVICES (201 S. SEMINARY ST.).

Right Diagram: SU - Single Unit Truck

- Vehicle:** SU - Single Unit Truck
- Dimensions:** 30,000ft, 3,000ft, 11,881ft, 3,367ft, 3,000ft, 5,00s, 42,000ft
- Maneuver:** The truck is shown making a U-turn from the street into the driveway of E R SERVICES (201 S. SEMINARY ST.).

CONSTRUCTION MANAGEMENT

- Access to businesses via temporary sidewalk
- 4 Phases
 - Franklin Phase 1
 - Seminary roadway Phase 2 - closed with traffic routed through Franklin
 - West side of Seminary Phase 3
 - East side of Seminary Phase 4
- Coordinating with McLean Co Hwy



PROJECTED SCHEDULE

- Bidding & Contracting: March to May
- Construction: Summer to Fall 2025
(exact timing dependent on awarded Contractor,
coordination with Ameren and lighting delivery)

QUESTIONS / FEEDBACK?

