

TIMELESS  
TREASURES

BROOME STREET PATTERNS



# I'm Actually Smiling

*Mask Parade*



*Finished mask size: 5½" x 8½" with 6½" ear elastics*

*Mask up! From sweet to scary, our I'm Actually Smiling panel contains 28 fun and flirty designs. Options include a sewn-in nose wire and filter pocket. Stay safe!*

This easy-peasy mask fits adult sizes S-M. Need a larger size? See our **Tailor Made** suggestions on page 3.

### Fabric Requirements

1 Panel (1 yard) Panel-CD8567 Multi

1/4 yard Mix-C7200 Charcoal

Note: You can cut 4 mask lining rectangles or 3 sets of filter pocket pieces from 1/4 yard of fabric.

### Other supplies

1/2 yard of 1/4"-wide flat braided elastic (per mask)

Nose wire, approximately 4" x 1/4", optional (1 per mask)

1/4 yard fusible interfacing, optional

### Cutting

#### From Panel-CD8567 Multi:

- Cut 1 rectangle, 6" x 9", for each mask exterior.

#### From Mix-C7200 Charcoal:

- Cut 1 rectangle, 6" x 9", for each mask lining.

If making a mask with a filter pocket, cut:

- 1 square, 6" x 6", and 2 rectangles, 3" x 6", instead.

#### From the flat braided elastic (optional):

- 2 lengths, each 7", for ear elastics.

#### From the fusible interfacing (optional):

- 1 rectangle, 6" x 9", for each mask, to provide extra protection.

All seam allowances are 1/4" unless otherwise specified. Press seam allowances open unless otherwise indicated.

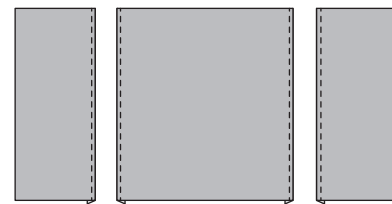
### Preparation

1. Print the mask template on page 4. Measure the test square to make sure the template prints at actual size. Cut the template out along the solid outer lines.

### Make the Mask

1. If adding a filter pocket, press under 1/4" on opposite sides of the lining square, and on one long edge of each lining rectangle. Topstitch along each turned and pressed edge, backstitching at start and stop (figure 1).

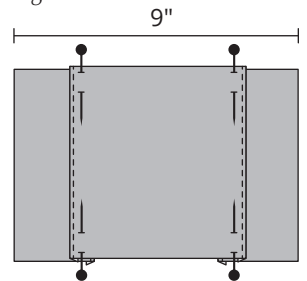
Fig. 1



With all three pieces facing right side up, and stitched edges together, layer the square on top of the rectangles, overlapping

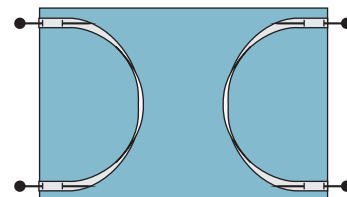
Fig. 2

as needed so that the combined width equals 9". Pin the square and rectangles together at the overlap along the top and bottom edges to form the pocket lining (figure 2).



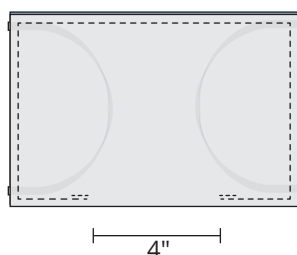
2. Note: Follow manufacturer's instructions to adhere fusible interfacing to wrong side of mask front for extra protection, if desired. Place the outer mask right side up. Position an ear elastic at each short end as shown, matching raw edges and to the inside of the upper and lower seam allowances. Pin the elastic ends in place. Baste across the elastic ends (figure 3).

Fig. 3



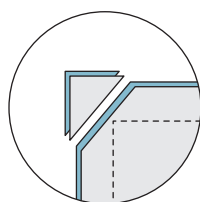
- Place the mask lining (or pocket lining) right sides together with the outer mask, matching all outer edges and sandwiching the ear elastics between the fabric layers. Sew along the outer edges, catching the elastic ends in the short side seams and pivoting at corners. Leave a 4" opening along the lower edge of the mask and backstitch at start and stop (*figure 4*).

Fig. 4



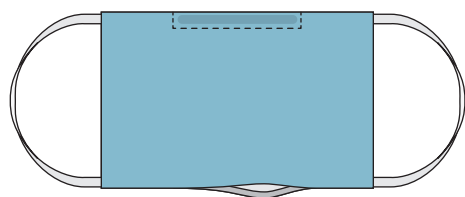
Clip the fabric corners at a 45° angle to reduce bulk and turn the mask right side out through the opening (*figure 5*). Use a point turner to smooth the seams. Tuck the seam allowance to the inside at the opening. Press.

Fig. 5



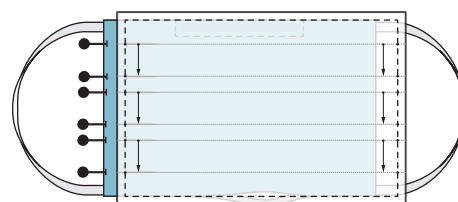
- Note: Skip this step if not including a nose wire.* Fold the mask in half and pinch the fold to temporarily mark the center along the upper edge. Unfold the mask and slip the nose wire inside the mask through the opening in the lower edge. Center the wire at the marked center, tucking it close to the upper seam. Pin the fabric layers together to hold the wire in place. Carefully sew around the ends and lower edge of the wire, securing it between the fabric layers (*figure 6*).

Fig. 6



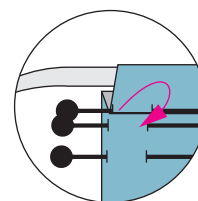
- Using the Mask Template as a guide, align the template's seam line with the upper and lower edges of the mask. Place a pin at each dot along the mask sides (*figure 7*).

Fig. 7



Following the direction of the arrows on the template, bring the end of each arrow to its arrowhead, creating three pleats. Pin the pleats in place along the mask sides (*figure 8*).

Fig. 8



- Topstitch around the outer edge of the mask (starting and stopping at the nose wire stitching if there is one), anchoring the pleats in place along each side, and closing the opening along the lower edge.

## Tailor-made

*Fine-tune your fit with a few simple steps.*

**For a deeper mask**, add an inch or two to the 6" measurement of the outer mask and mask lining (or filter pocket) pieces. If you don't want to cut into the other designs in the mask panel, add a coordinating fabric strip, (1" or 2") × 9", to the upper and/or lower edge of the outer mask. Follow the instructions to make the mask, centering the pleats along the side edges in step 5.

**Adjust the ear straps** by lengthening or shortening the ear elastics.

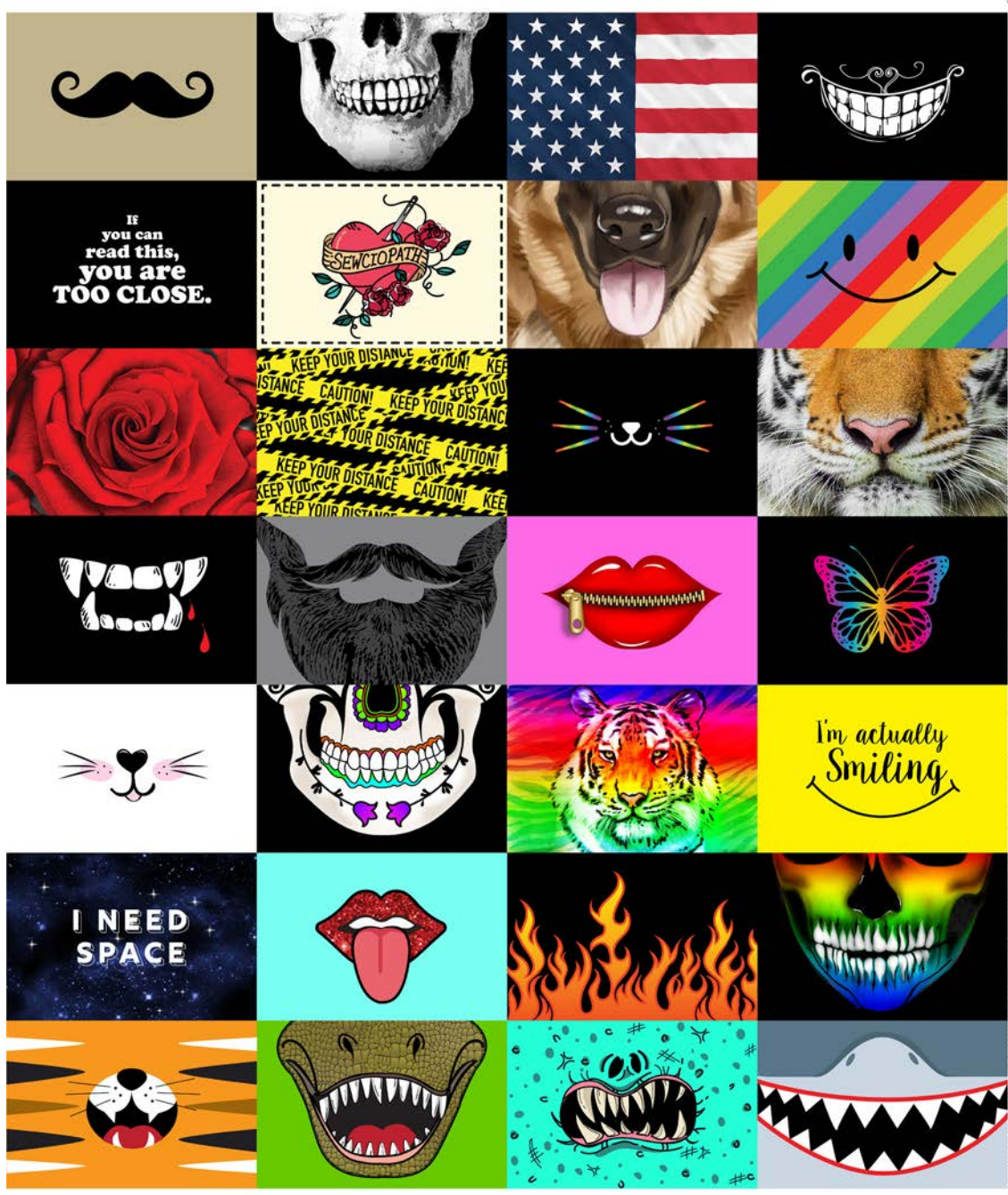
**For another ear option**, substitute four strips, 1/2" or 3/4" x 6", of cotton knit fabric for the ear elastics. Pull the ends of each strip to make it curl into a cord. Pin one end of each strip in place instead of the ear elastics in step 2, making sure the rest of the strip doesn't get caught in the seam. After turning, use tweezers to thread the cord ends on each side of the mask through a bead or jewelry-making rubber stopper ring. Knot the cord ends to keep bead or ring from slipping off. Slide the bead or ring as needed to tighten or loosen the mask.

## Make it Fun

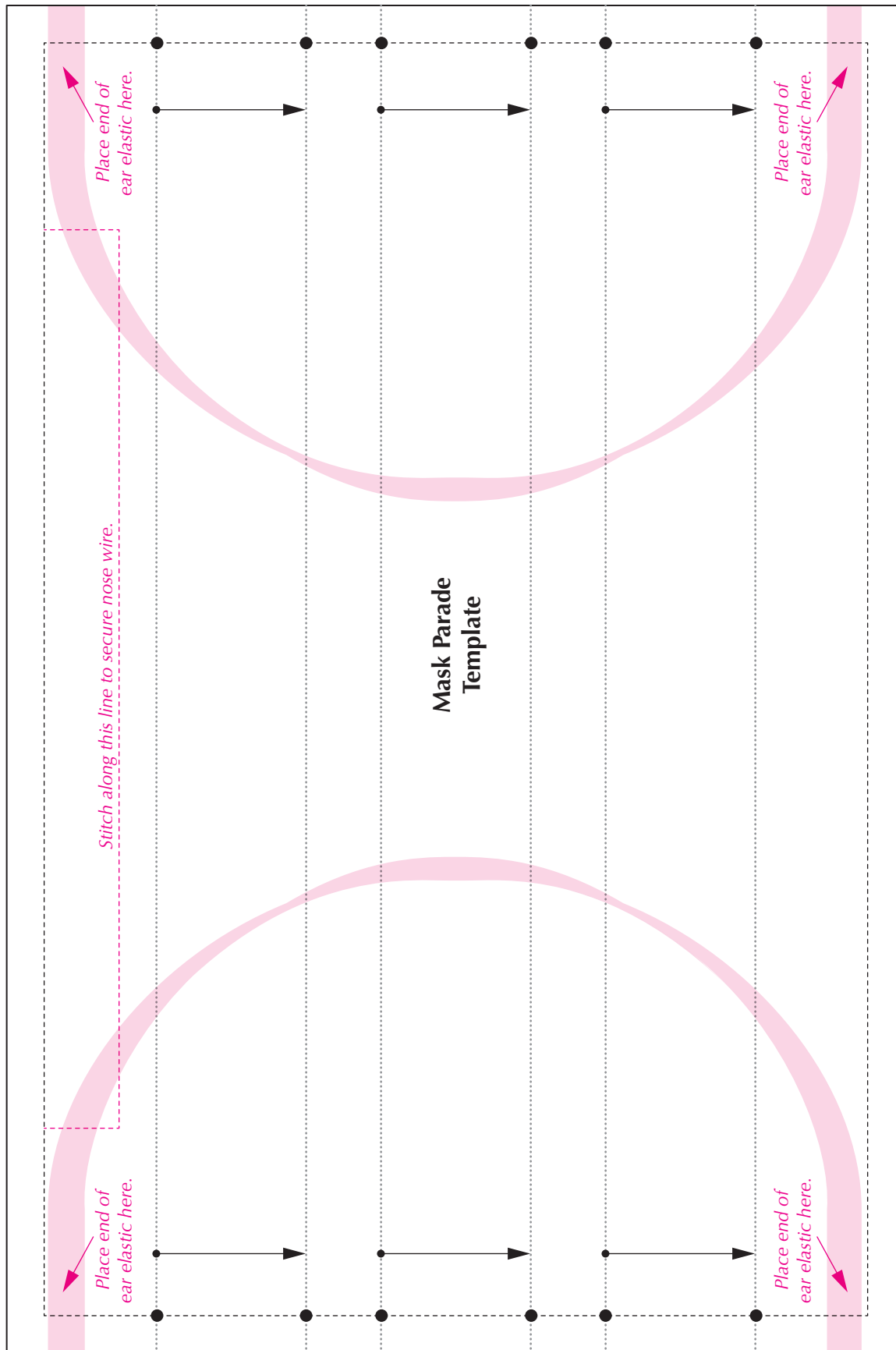
Make your mask part of your Halloween costume. Add animal ears to a headband, stylize your eye makeup, or wear a hat or hairstyle to complement your mask. The ideas are endless once you get your imagination going!

©2020 Timeless Treasures [www.ttfabrics.com](http://www.ttfabrics.com)

This pattern is for individual home use only. This pattern may not be reproduced for commercial purposes (i.e., may not be sold).



*Imagination... Passion... Creativity*



*Place end of ear elastic here.*

*Place end of ear elastic here.*

*Stitch along this line to secure nose wire.*

*Place end of ear elastic here.*

*Place end of ear elastic here.*

This square should measure 1" x 1" when printed.