

Tag-Along

96"x96"

To make the quilt pictured:



Becky Tillman Petersen

This quilt is made up of one 12.5" block (before sewing into the top) and looks like this:



You need:

- 5 3/4 yards of light blue for background
- 7/8 yards green fabric
- About 4 yards of medium/dark blues pieces for 9 patch blocks plus the other strips
- 3/4 yard of your color choice for the binding

Cut:

From medium to dark blues:

- 576 2.5" squares
- 192 – 1.5"x2.5" strips (see note below)
- 192 – 1.5"x3.5" strips (see note below)
- 192 – 1.5"x 4.5" strips (see note below)
- 192 – 1.5"x5.5" strips (see note below)

Note: make sets of the strips – one 1.5"x2.5" and a matching 1.5"x3.5"

Another matching set of 1.5"x4.5" and a 1.5"x 5.5" strip to make the blocks "look like" mine.

From very light blue:

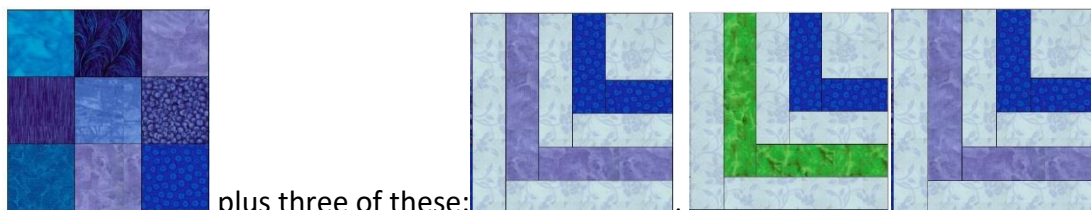
- 192 – 2.5" squares
- 192 – 1.5"x3.5" strips
- 192 – 1.5"x4.5" strips
- 192 – 1.5"x5.5" strips
- 192 – 1.5"x6.6" strips

From bright green:

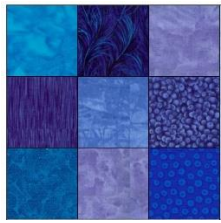
- 64 – 1.5"x4.5" strips
- 64 – 1.5"x5.5" strips

How to make these blocks:

This block is made up of 4 smaller blocks that each measure 6.5" before sewing together.



To make the first part of this block – the 9 patch, From your 576 2.5" squares, make 64 9 patches. From them make your 9 patches, by first sewing three together in a row – do that three times and sew those strips together after pressing the seams all in one direction.

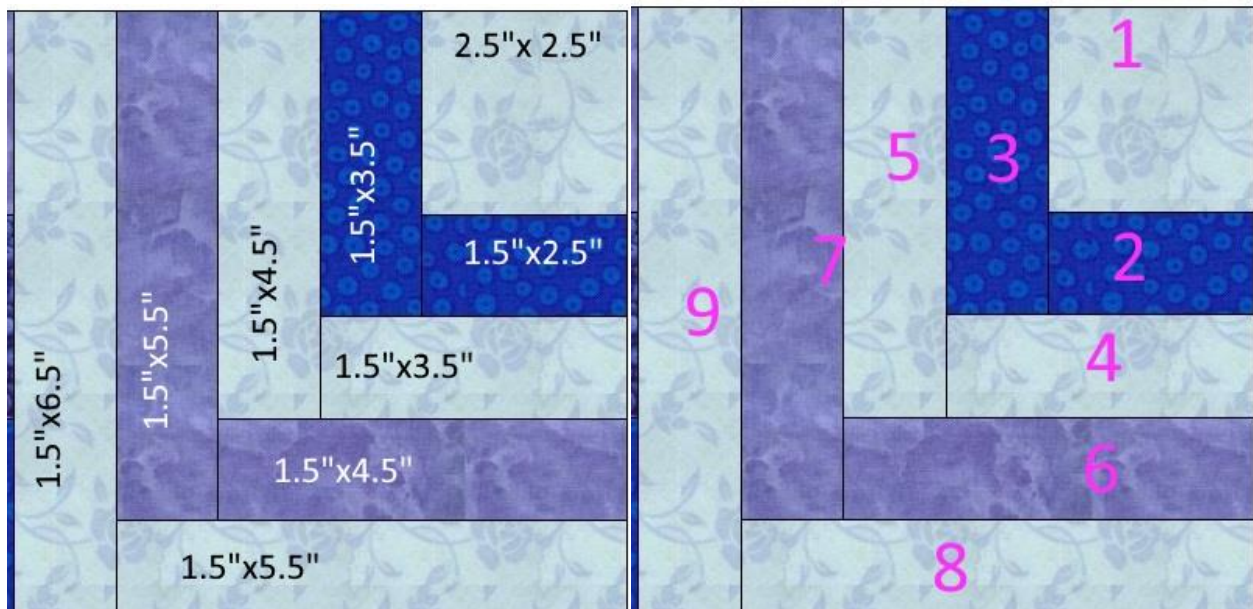


This segment will finish at 6.5"x6.5". Make 64.

To make the log cabin part, simply make it as any log cabin block.

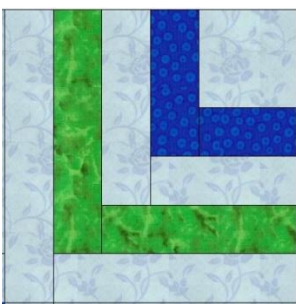
Note: I made my "rows" in the same color – not making it a completely 'scrappy scrappy" quilt. So, when you cut out your logs, you should make coordinating sets (use the block below with the numbers on it) if you want the same look:

Start with your 2.5" light blue block and sew your strips in this order:

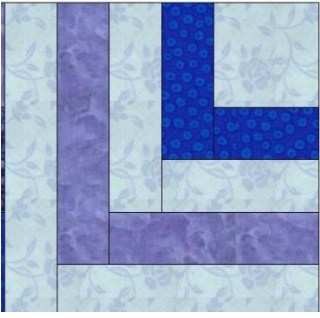


Actually, when I did these, I just finger pressed before adding the next "log". It actually worked very well for me and I had very little distortion to the blocks as I was working on them. I was very pleasantly surprised.

I made 64 that looked like this – with green in this placement



And 128 that were like this – only using various blues I did not make all 128 blocks the same!



For easiest “nesting”, either press your seams open on these blocks or make half of them with the seams pressing towards the darker strips and half towards the lighter strips.

Once you have finished the segments, sew them together.

First sew the 9 patch to a section that doesn’t have the green – like this:



And then sew the other two blocks together like this:



Then, sew those two sections together like this:



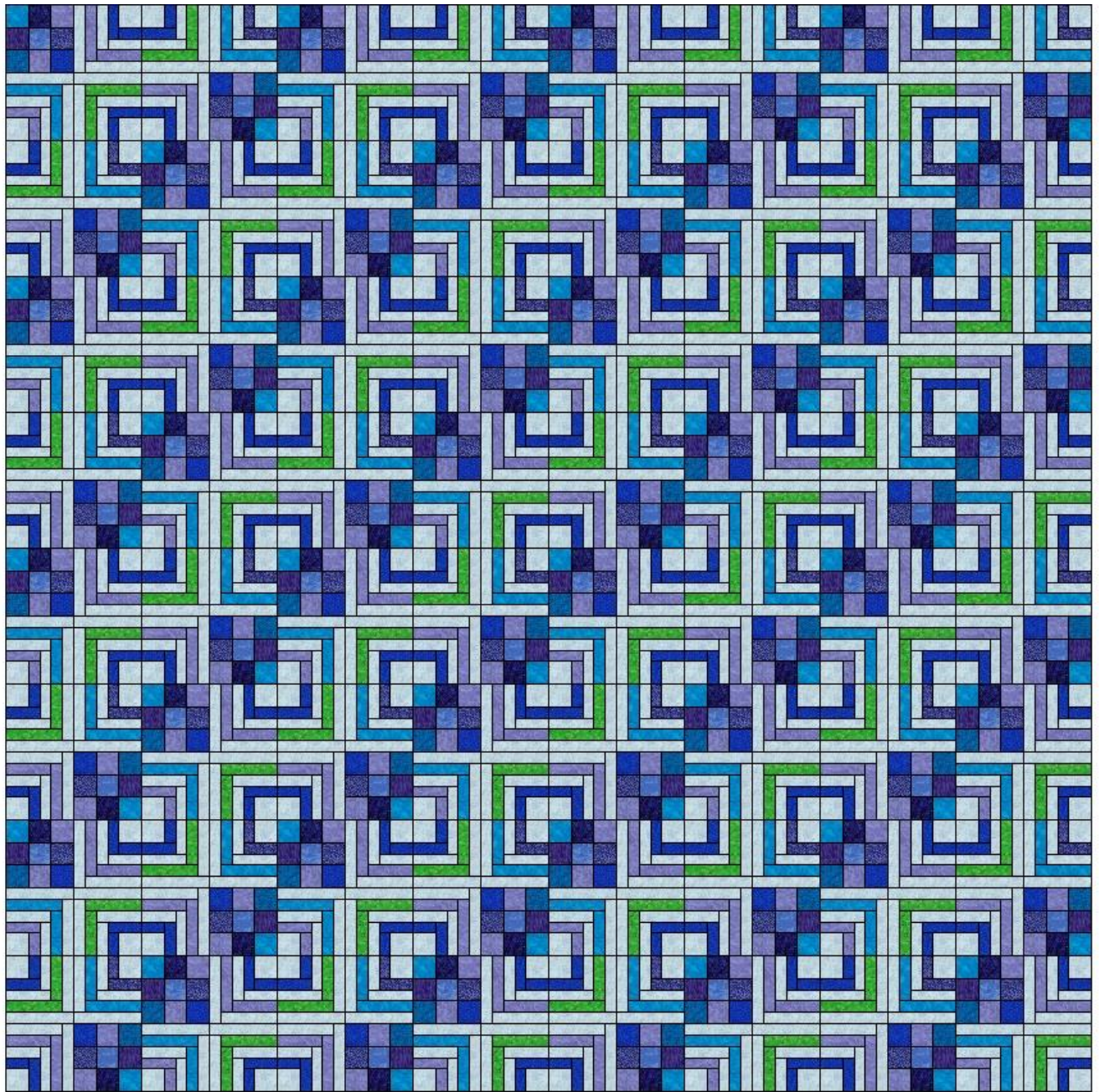
Make 64 blocks like this. They finish at 12.5"x12.5".

That's all the blocks you need for this quilt. There are no sashings/cornerstones and no borders!!!!

Yes!!!

How to make this quilt:

1. Using this diagram, place your blocks. First sew into rows and later sew those rows together. I did sew one row to the next as soon as I finished it just to make sure I wasn't making a mistake.



2. **Press** well.
3. **Sandwich**, using whatever type of batting and backing you prefer.
4. **Quilt** as desired.
5. **Bind**, using whatever method you wish.

Congratulations! Your quilt is finished!