

# Sticks and Stones

About 98"x98"

To make the quilt pictured:



This quilt is made up of only 1 (different) – 9" block (before being sewn into the quilt) plus a sashing block



and sashing block:





## You need:

- 4 5/8 yards of various blues
- 6 yards of off white/off white cream print
- 1 3/4 yards of blue for border
- 3/4 yard of fabric for the binding

## Cut:

*Note: I did NOT strip piece the rail fence part of this top as I cutting up small scraps into 1.5"x4.5" strips.*

### For main blocks:

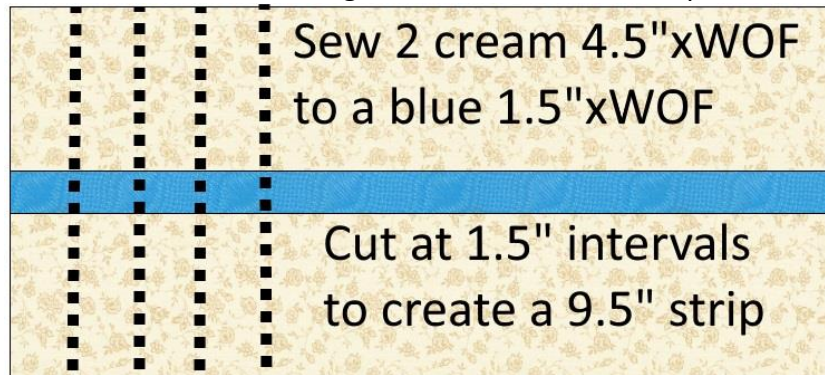
From various blues:

- 656 - 1.5"x4.5" strips

From off white/creams:

- 82 - 1.5"x4.5" rectangles

I then strip pieced the center part of this block by cutting 2 4.5" strips x WOF of cream and 1 1.5"xWOF of a blue. I sewed them together and cut off 1.5" strips like this:



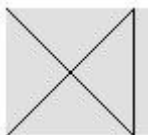
Cut 41 such strips. They look like this and measure 1.5"x 9.5"



### For side setting triangles:

From off white/cream –

- 4 squares 15" cut twice diagonally like this: (the pattern calls for 14" but it is barely big enough – I'd rather make it big and trim it down later)



You will now have 16 triangles for your side setting pieces.

### For corner triangles:

From off white/cream –

- 2 squares 8" and cut in half once diagonally like this:



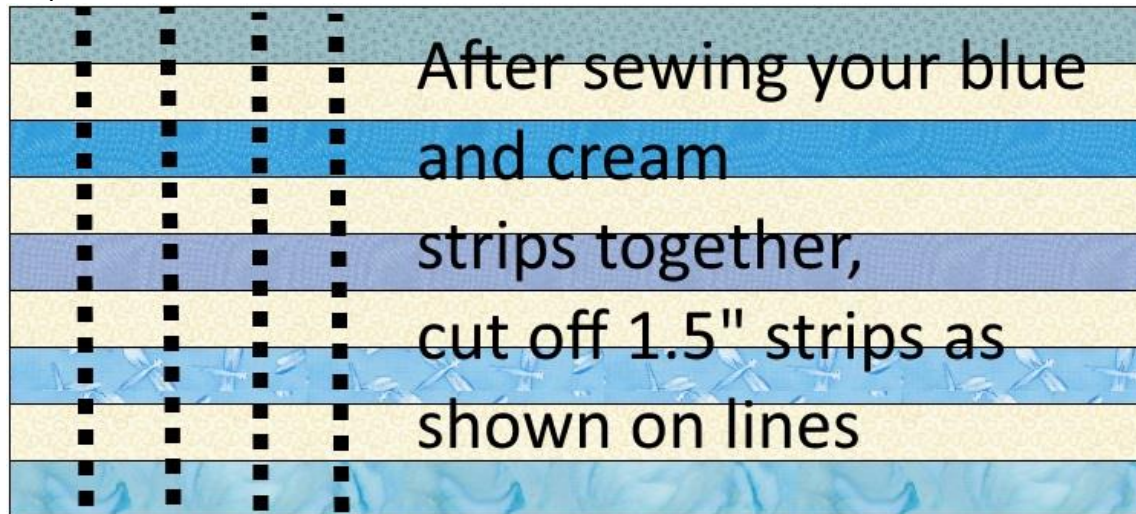
This will now make the needed 4 corner setting triangles.

Sashing blocks:

- I did strip piece the centers of these blocks, but because I used so many short strips (using up small scraps), I won't show that to you. For each strip set, you need 4 creams and 5 blues cut 1.5"xWOF or as long as you can.

Sew them together like this: blue/cream/blue/cream/blue/cream/blue/cream/blue

After pressing to the blues, cut off 1.5" strips and you will end up with a center piece of your sashing strip:



Each of these strips will look roughly like this (blues will be different, of course!)



Cut 100 – measures 1.5"x9.5" at this point.

From cream:

- Cut 200 – 1.5"x9.5"

For cornerstone blocks:

From cream/blue – strip piece units by 2 cream 1.5"xWOF to a blue 1.5"xWOF and cutting off 1.5" strips like this:



Make 60 such centers (blues will vary if using scraps as I did)



From cream:

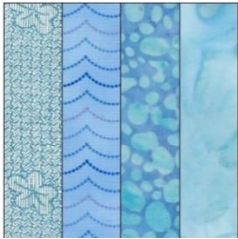
- Cut 120 1.5"x3.5" strips:

## How to make the blocks:

### Main block:



For each block, sew together 4 of your small rails measuring 1.5" x 4.5" to form a 4.5" square like this:

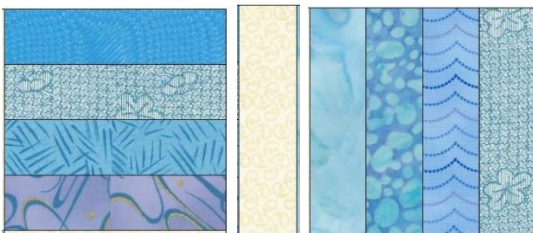
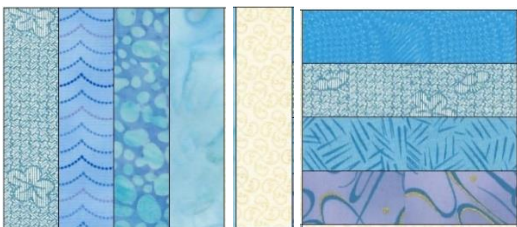


For each block you need 4.

Once they are sewn together, press all the rails in one direction.

Go find your cut cream 1.5" x 4.5" pieces and your strip pieced cream/blue/cream pieces that were cut 1.5" x 9.5" as under the "Cut" section of this pattern.

Then, place your segments like this:

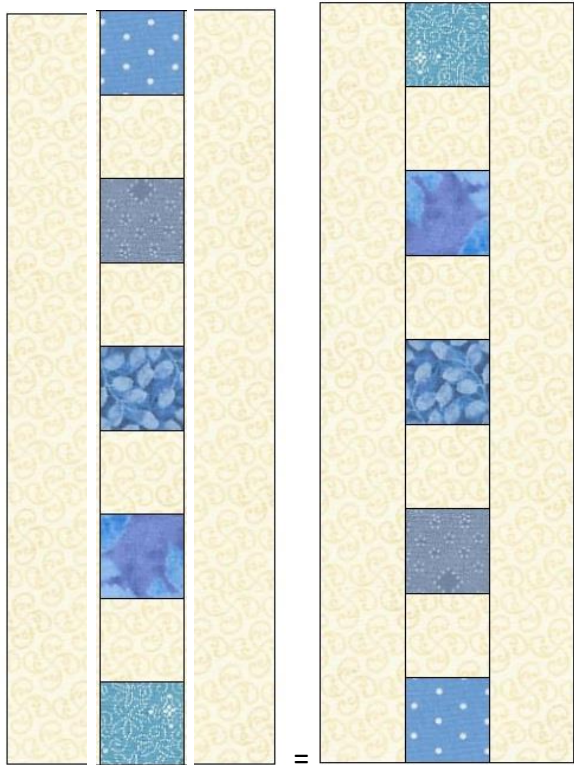


When sewn all together the block will measure 9.5" square.

Make 41.

### **Sashing blocks:**

Once you strip pieced and cut off 60 segments like this, go ahead and make the block by adding a 1.5"x9.5" cream strip to each side.



They should measure 3.5"x9.5"

Make 100.

### **Cornerstone blocks:**



Add your previously cut 1.5"x3.5" cut cream strips to your previously strip pieced cream/blue/cream piece. Like this:



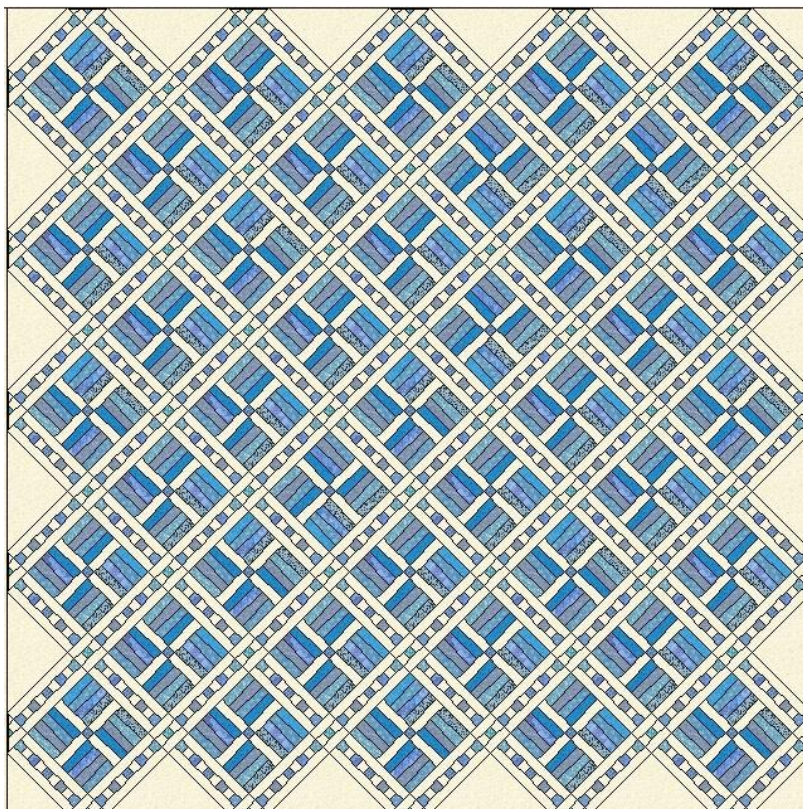
They now measure 3.5" square.

Make 60.

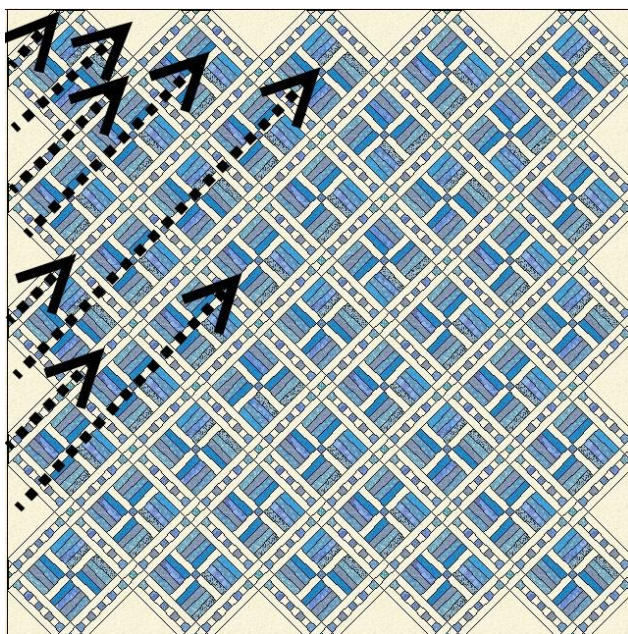


## How to make this quilt:

1. Using this diagram, lay out your blocks in rows.



When working with an on point setting, you have to sew it together in rows like this, using your previously cut side setting triangles. Watch carefully the angles for the setting triangles.



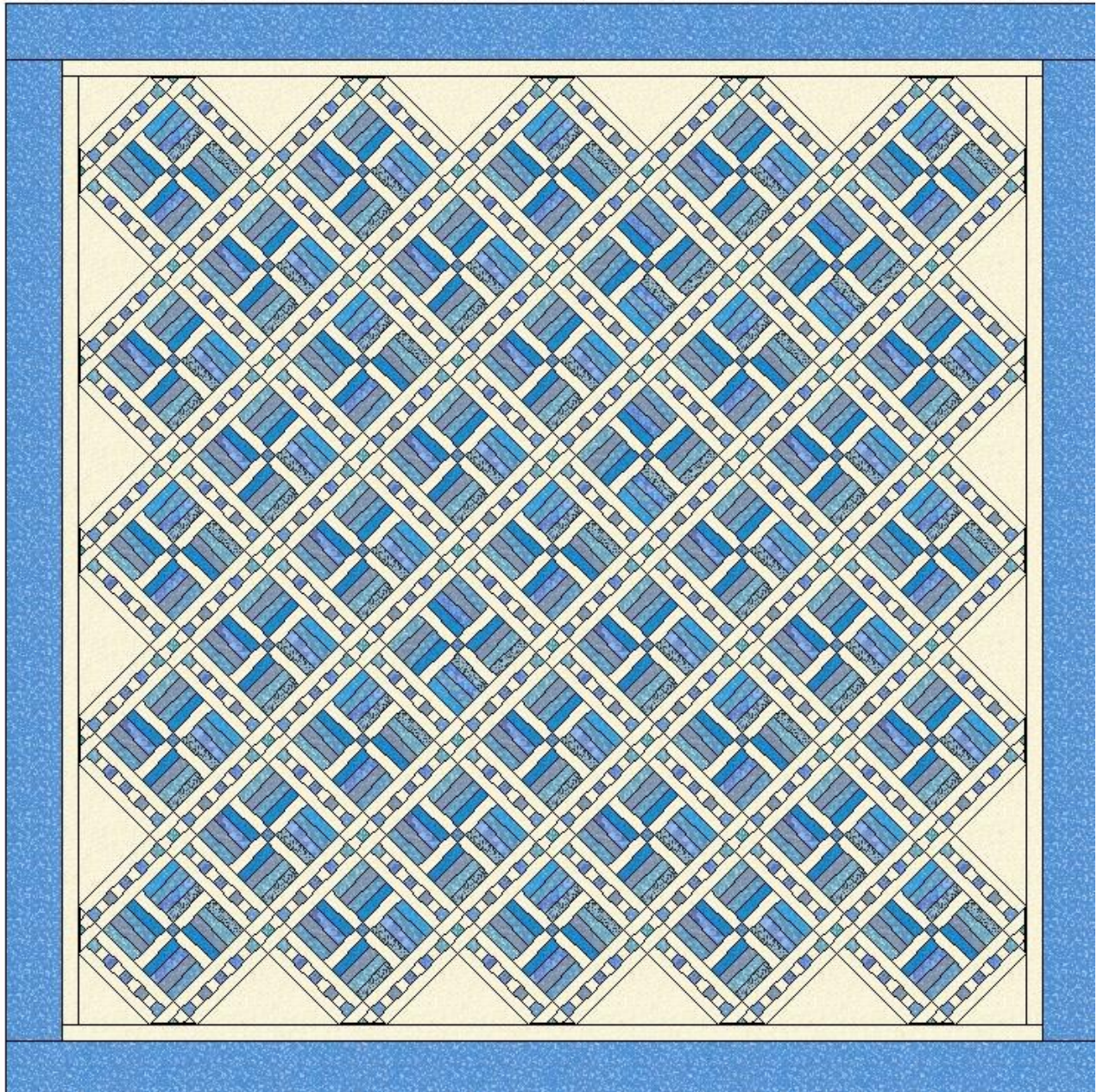
After you sew the main rows together, including the side setting triangles, add the corner setting triangles last.

I added the side setting triangles to the rows of the blocks first to make a row, then I added the sashing/cornerstones blocks to the row.



After sewing the center together, I trimmed  $\frac{1}{4}$ " to the outside of the center of the outer cornerstone blocks so I could easily add the first border. Pictures at the end of the pattern should help you.

Final layout:



**2. Add borders:**

First border – cream

- Cut 2 – 2" x 85  $\frac{3}{8}$ " – I actually used this measurement as my cream was pretty soft on the main center but the border cream wasn't. I wanted as little stretching as possible with the soft center cream. There are times when I would adjust this to either 85" or 85  $\frac{1}{2}$ " just to make it easier. However, I didn't. Piece as needed to get the length you need. Add to the sides. Pin, matching centers and make sure any fullness is eased in nicely to this border. Sew.
- Cut 2 – 2" x 88  $\frac{3}{8}$ " – Piece to get the length needed. Pin in place. Sew.

Second border - blue

- Cut 2 – 5.5" x 88  $\frac{3}{8}$ ". Piece as needed to get the length needed. Add to the sides.
- Cut 2 – 5.5" x 98  $\frac{3}{8}$ ". Piece as needed to get the length needed. Add to the sides.

**3. Press well.**

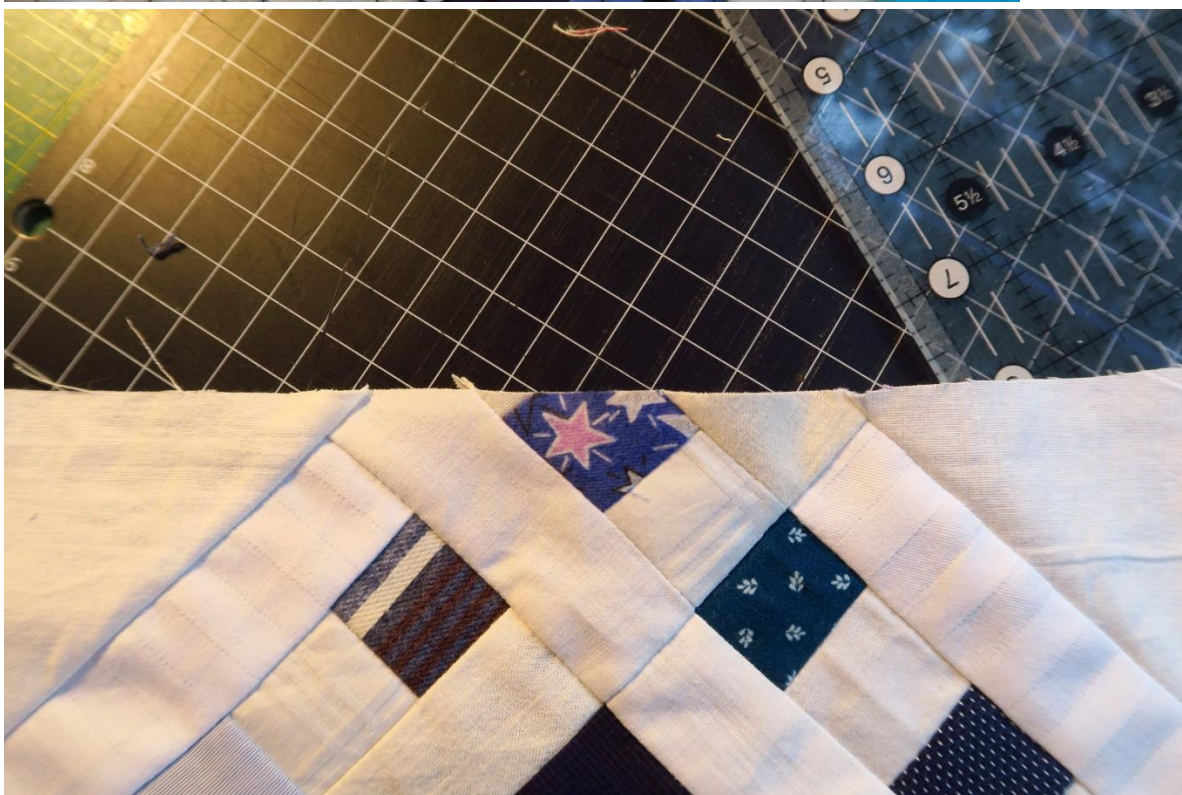
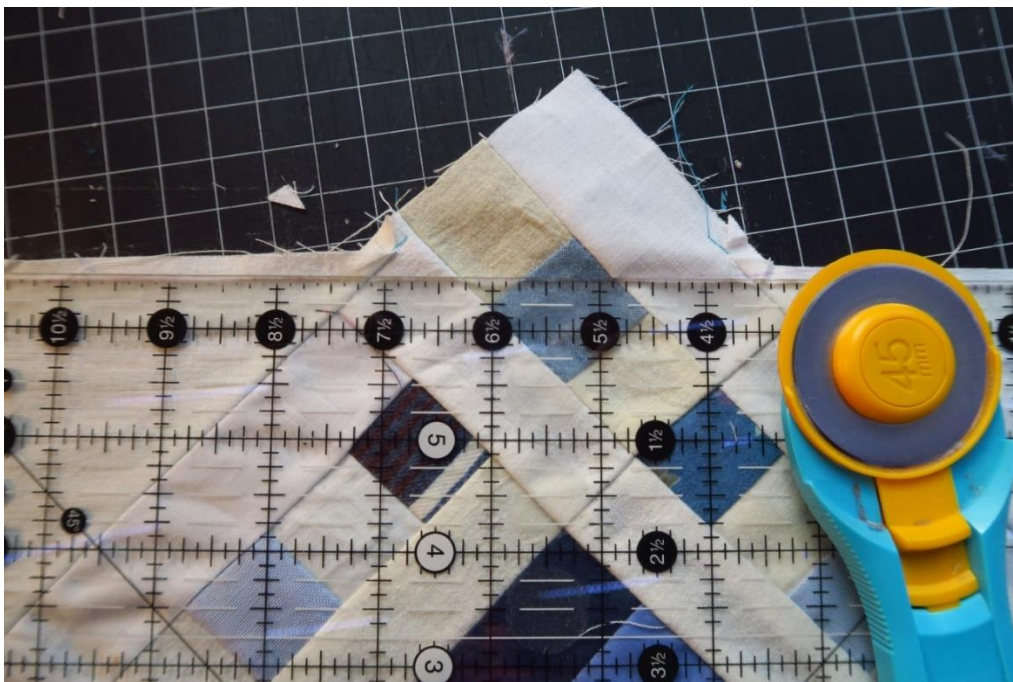


4. **Sandwich**, using whatever type of batting and backing you prefer.
5. **Quilt** as desired. I used swirls.
6. **Bind**, using whatever method you wish.

Congratulations! Your quilt is finished!  
Enjoy!

©2019 Becky Tillman Petersen

Trimming the top after the center is put together.





I pinned carefully and matched the center of the border to the center of the top and eased as necessary to make everything fit nicely.





