

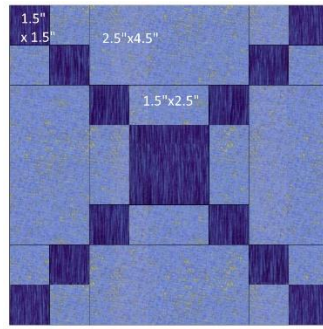
Simple Chains

90.5" x 101.82"

To make the quilt pictured:



This quilt is made up of one 8.5" block (before sewing into the top) and looks like this:



and a plain 8.5" block

You need:

- 3 yards of dark blues for chains I used everything from dark, dark navy to dark grayish blue to dark turquoise
- 8-9 yards of light blues or "low volume" fabric with blue as the main color I used scraps and various pieces of second hand clothing and bedding
- 3/4 yard of your color choice for the binding

Cut:

I cut the blocks individually as I was working with scraps and small pieces.

From dark blues for each chain block: I made each chain block its own color – no mixing and matching for mine.

- 12 – 1.5" squares
- 1 – 2.5" square

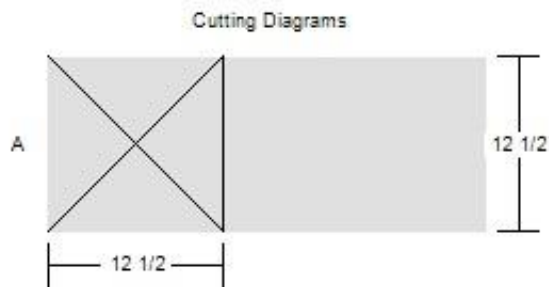
From very light blues: Make in sets to make a complete block all the same:

- 8 – 1.5" squares
- 4 – 2.5"x4.5" rectangles
- 4 – 1.5"x2.5" rectangles

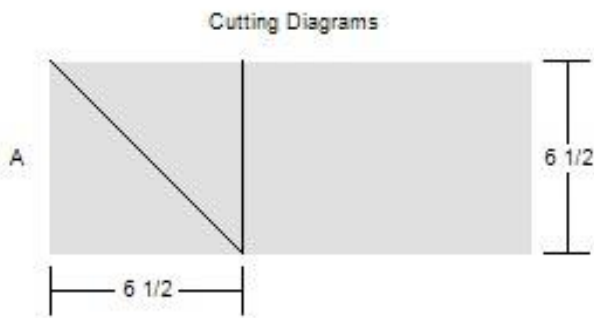
You need to cut 72 sets of these as you need to make 72 blocks.

PLUS:

- 56 – 8.5"x8.5" squares
- 8 – 12.5" squares which you should then cut 2x diagonally like this for a total of 32 side setting triangles. You need 30 so you will have 2 too many: Throw those two into your scraps pile! I'm sure it is ever growing all the time!

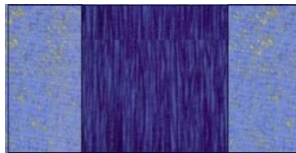


- 2 – 6.5” squares which will you cut once across diagonally to make 4 corner setting triangles:



How to make these blocks:

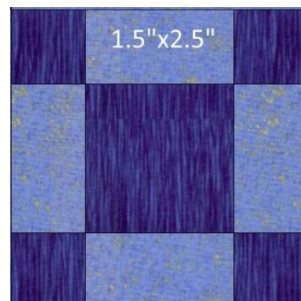
1. Sew two light blue 1.5”x2.5” strips to the sides of the center dark 2.5” square.



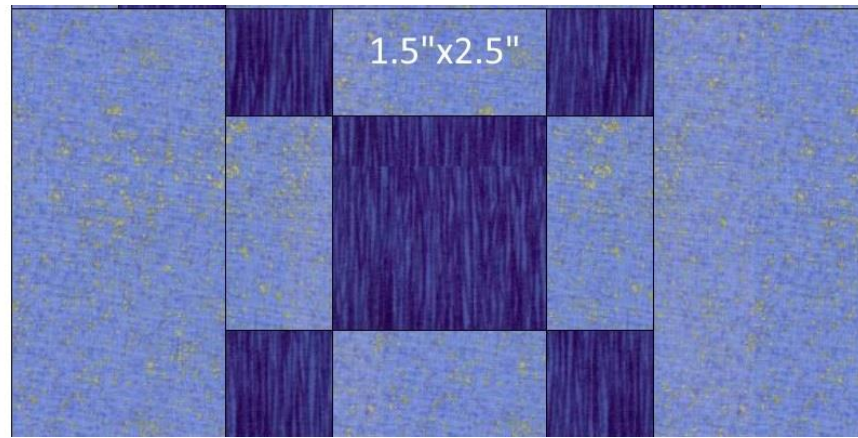
2. Sew 1 – 1.5x2.5” light rectangle to 2 dark 1.5” squares – putting one on each end. Make 2 identical.



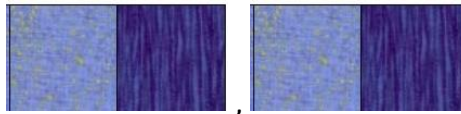
3. Sew these pieces to the top and bottom of the piece you made in step 1.



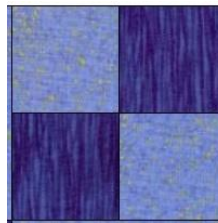
4. Add a 2.5”x4.5” light piece to each side of this part:



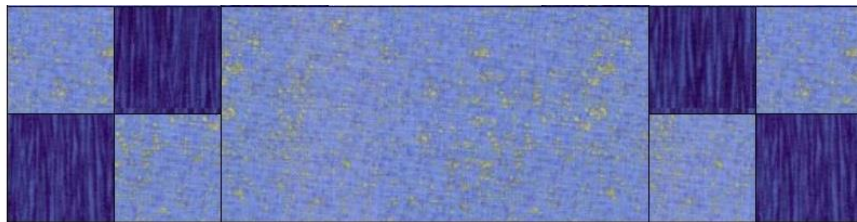
5. Make 4 – 4 patches like this from your 1.5” squares by sewing a light to a dark



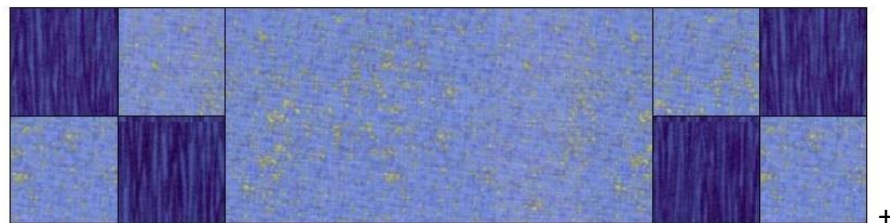
And then

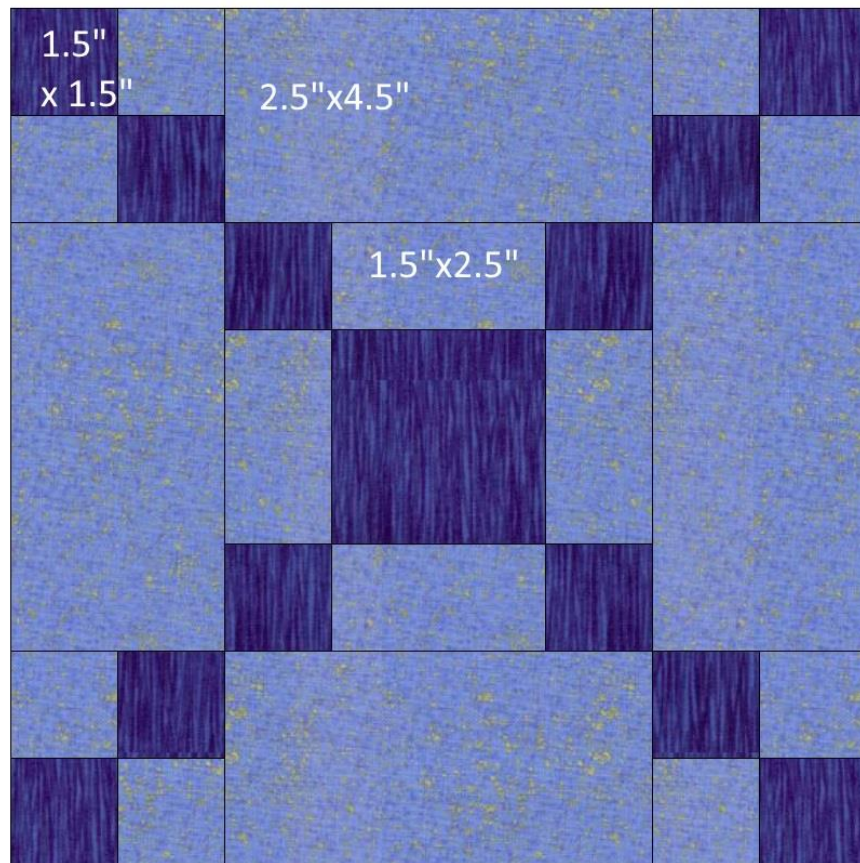
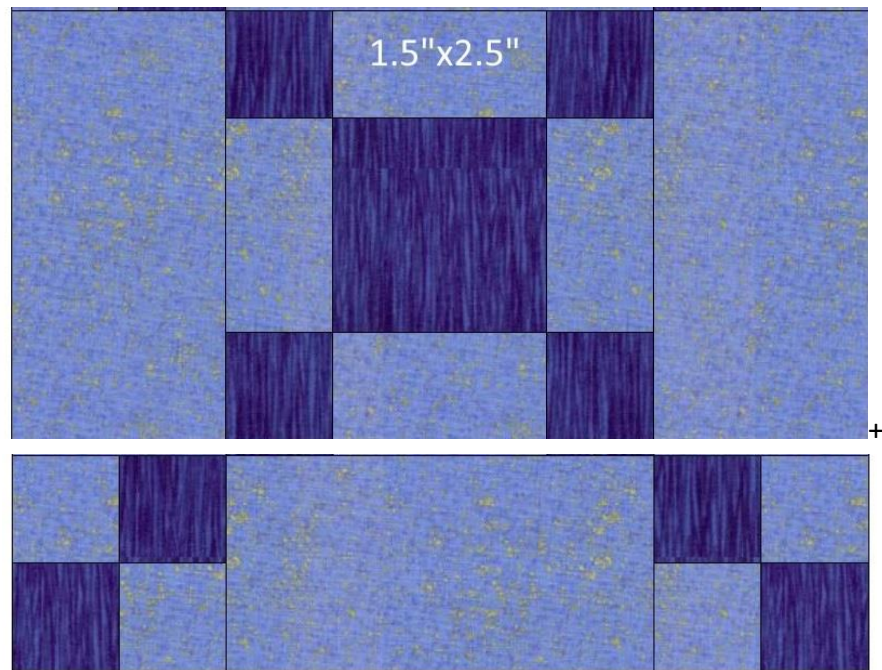


6. Add these 4 patches to a light 2.5”x4.5” rectangle so that it looks like this: Make 2.



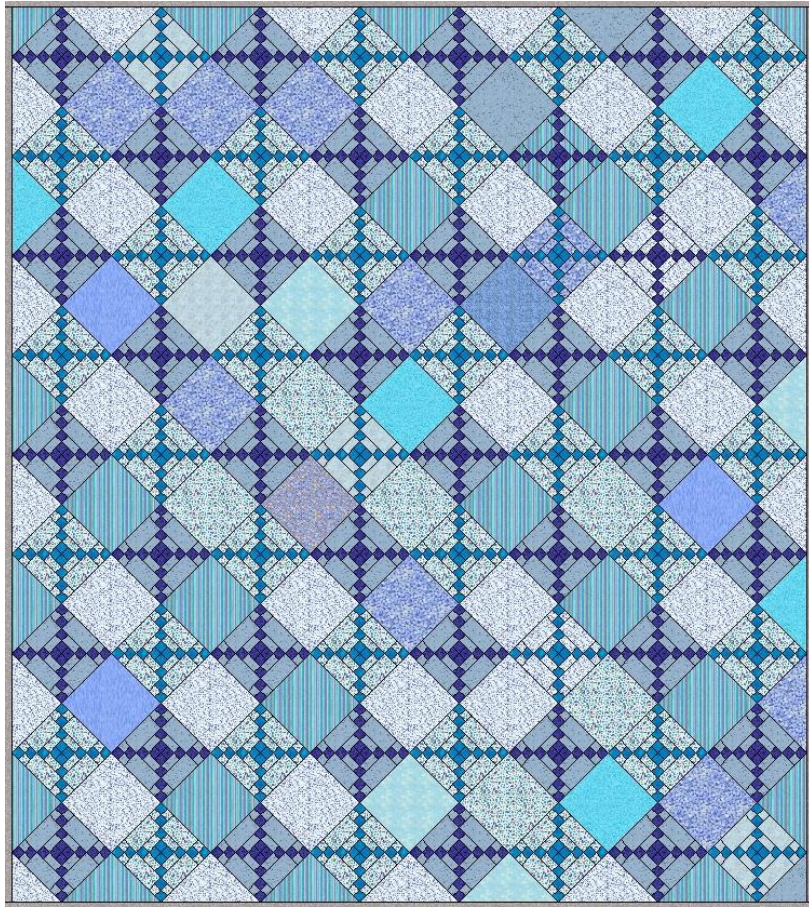
7. Now add them to the center part so that the final block looks like the chain block pictured above.



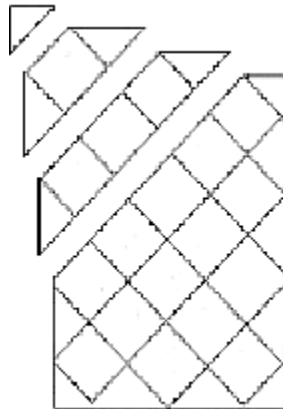


How to make this quilt:

1. Using this diagram, place your blocks, alternating chain blocks and plain blocks and the side setting triangles you previously cut.



Since it is on point, start in a corner and work with one row at a time, leaving the four corner setting triangles until the end.



Here is mine after the first few rows are put together:



2. **Press** well.
3. **Sandwich**, using whatever type of batting and backing you prefer.
4. **Quilt** as desired.
5. **Bind**, using whatever method you wish.

Congratulations! Your quilt is finished!
See, it was pretty simple!