

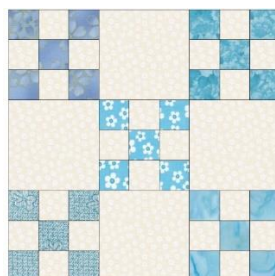
Pointedly Nines

About 95.5" x 95.5"

To make the quilt pictured:



This quilt is made up of only 1 (different) – 14" block (before being sewn into the quilt)



You need:

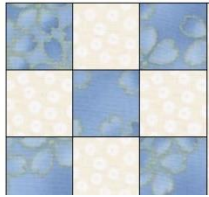
- 1 7/8 yards of various blues
- 9 5/8 yards of off white/off white cream print
- 3/4 yard of fabric for the binding

Cut:

Note: I did NOT strip piece this top as I was making it alongside another quilt top – and trying to use up the last pieces. This quilt uses 25 Double 9 patch blocks.

From various blues:

- 125 2" squares in sets of 5 matching



From off white/creams:

- 100 - 2" squares
- 100 - 5" squares

For side setting triangles:

From off white/cream –

- 4 squares 21" cut twice diagonally like this:

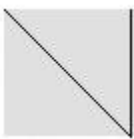


You will now have 16 triangles for your side setting pieces.

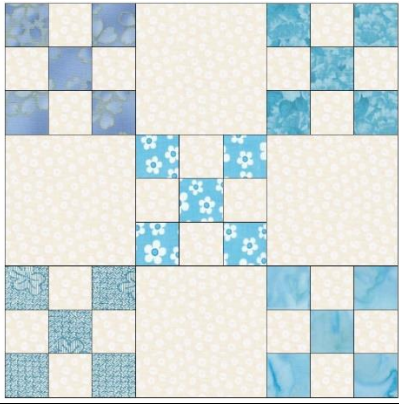
For corner triangles:

From off white/cream –

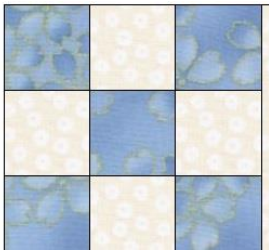
- 2 squares 10.5" and cut in half once diagonally like this:



How to make the block:

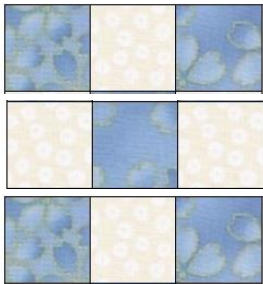


1. You first need to make 5 9 small 9 patches from your blues and off whites like this:



Sew a blue to a cream square (all squares in these small 9 patches start at 2") and then another blue
For the second row, sew a cream to a blue and then another cream

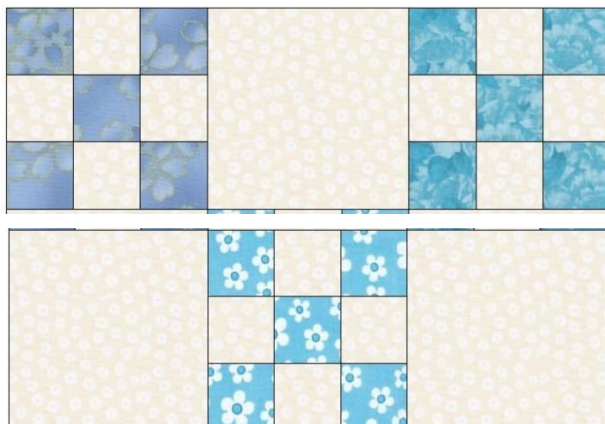
For the third row, repeat the first row:



Now sew all rows together. Press all towards the darks. At this point they will measure 5" square.

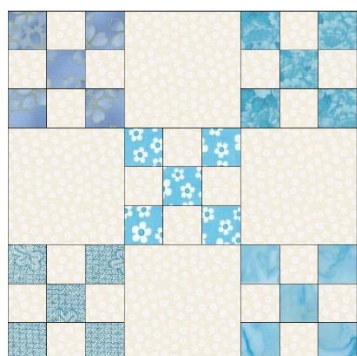
Once you have your little 9 patches made, you can put together this block:

Now, put together your block by sewing a white 5" cream square to two 9 patches like this:



Then add the next row of cream/9patch/cream

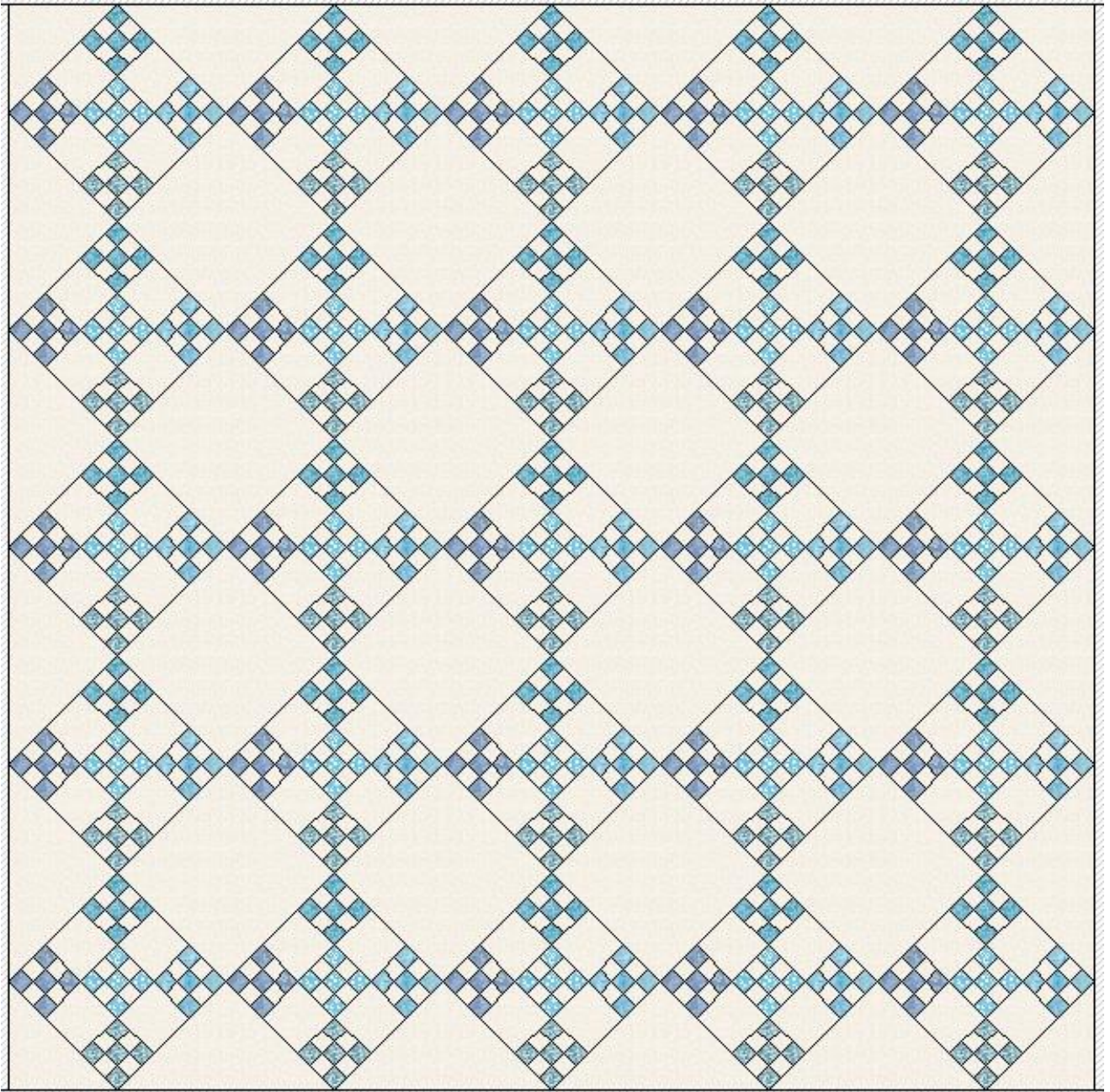
Then repeat the first row:



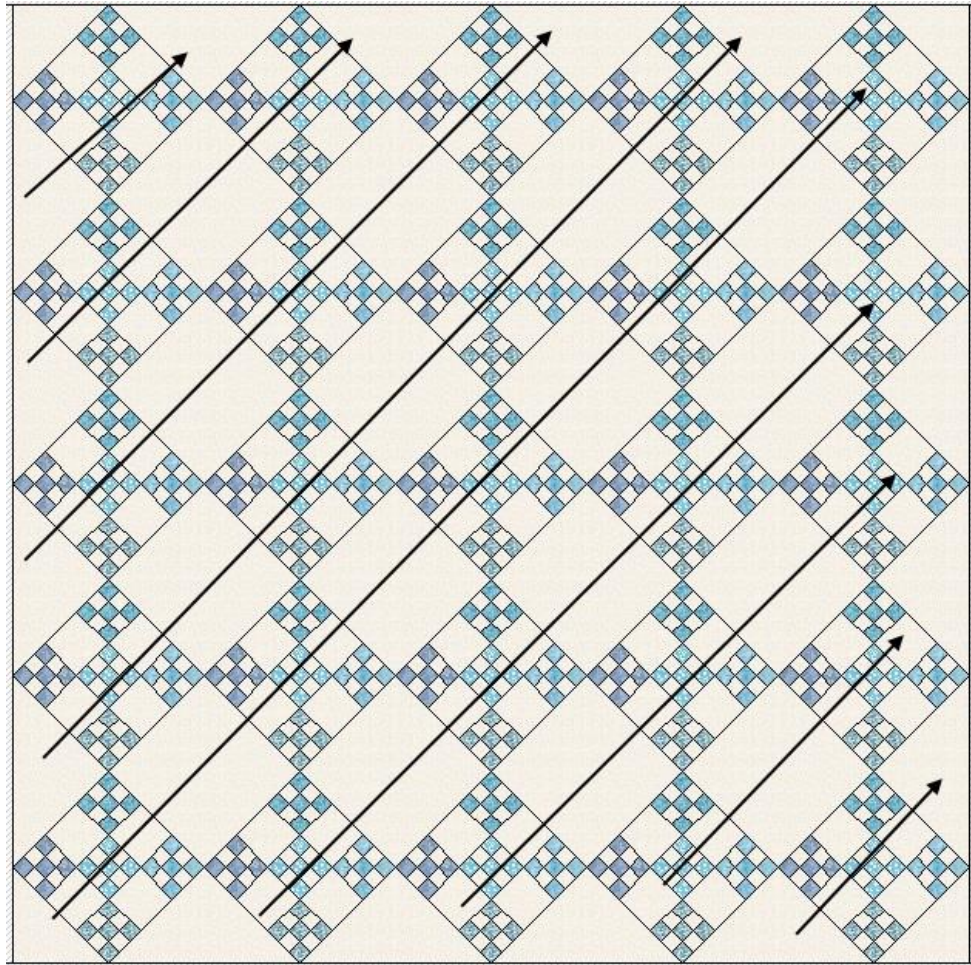
It will finish at this point at 14" square. Once sewn into the quilt it will be 13.5" square.
Make 25.

How to make this quilt:

1. Using this diagram, lay out your blocks in rows.



When working with an on point setting, you have to sew it together in rows like this, using your previously cut side setting triangles. Watch carefully the angles for the setting triangles.



After you sew the main rows together, including the side setting triangles, add the corner setting triangles last.

2. **Press** well.
3. **Sandwich**, using whatever type of batting and backing you prefer.
4. **Quilt** as desired. I used swirls.
5. **Bind**, using whatever method you wish.

Congratulations! Your quilt is finished!

Enjoy!

This is an easy one! But it doesn't matter – I love the look of a simple 9 patch!

Here are some pictures:

I am still working on making the swirls pretty.

