

# Mini Treasures

62"x84"

To make the quilt pictured:



Becky Tillman Petersen [www.quiltedtwins.com](http://www.quiltedtwins.com)

This quilt is made up of one 6.5" block and it looks like this



## **You need:**

- A total of 3 yards of novelty fabrics to be used as the centers of the main blocks and the piano key border
- 2 5/8 yards of pale pink
- 5/8 yard of dark gray for shadows
- ½ yard of dark pink for inner border
- ½ yard of your choice for binding.

## **Cut:**

### **For main blocks: (54)**



From novelty fabric:

- 54 – 4"x6" rectangles

From dark gray:

- 54 – 1.5"x6"
- 54 – 1.5"x3"

From light pink:

- 108 - 1.5"x7"
- 108 – 1.5" squares

### **For sashing:**

From light pink:

- Cut 45 – 1.5"x 7" strips

- Cut 9 strips 1.5"x WOF and sew together end to end and then cut off 8 segments that are 44.5" long. These will go between the rows. I didn't use cornerstones on this quilt even though the layout shows pink ones.

**Border will be dealt with under "How to put together this quilt"**

## **Construct blocks:**

### **The main block:**



Sew together your gray 1.5"x 3" to a 1.5" square. It should now equal 1.5"x 4".



Sew to the novelty fabric



Sew together a 1.5"x6" gray piece to a 1.5" pale pink square.



Add to the novelty and strip piece above.



Add 1.5"x7" strips to each side of this block.



I made mine so that some of the novelty prints were facing up and down and some were horizontal – at a 90 degree angle. This only matters if your print on the fabric is directional.

Your main block now should be 7" square.

### **How to put together this quilt:**

1. **Construct your blocks as described above.** You need 54 of them.
2. **To make the center, using the diagram below,** lay out the blocks and sew together in rows putting in sashing as pictured.
3. **First lay the blocks out in rows,** and go ahead and sew a 1.5"x 7" pink sashing strip in between each block like this: (For me the hardest part of this quilt was figuring out the layout of the finished blocks!)



Make 5 like this

And then

Like this:



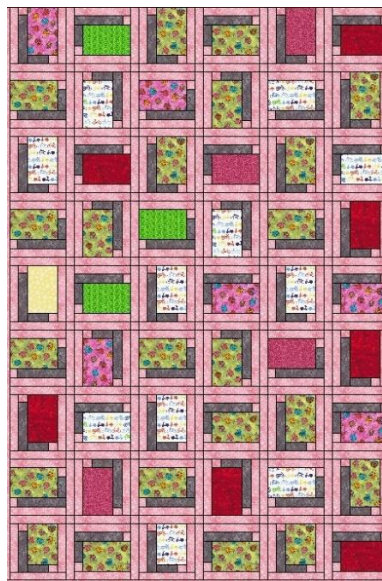
Make 4 like this:

When you have finished making these rows (I tend to safety pink a piece of paper to the row with the number on it – otherwise I get things mixed up,

Sew the long 1.5"x44.5" sashing strip to a row of finished blocks and attach the next row of blocks so that you have this:



Continue until you have sewn the center together, alternating a finished row of blocks and a long 44.5" light pink sashing strip and the next row of blocks. You will then have this:



**4. Add borders:** Cut and/or piece as necessary to get the length needed

**A. Border 1 - light pink:**

- 2 – 2.5"x 67" – add to the sides of your center
- 2 – 2.25"x 48.5" – add to the top and bottom

**B. Border 2 - dark pink:**

- 2 – 1.5"x 70.5" – add to the sides of your center
- 2 – 1.5"x 50.5" – add to the top and bottom
- At this point the top should be 48.5"x70.5" (necessary for the piano key border to fit).

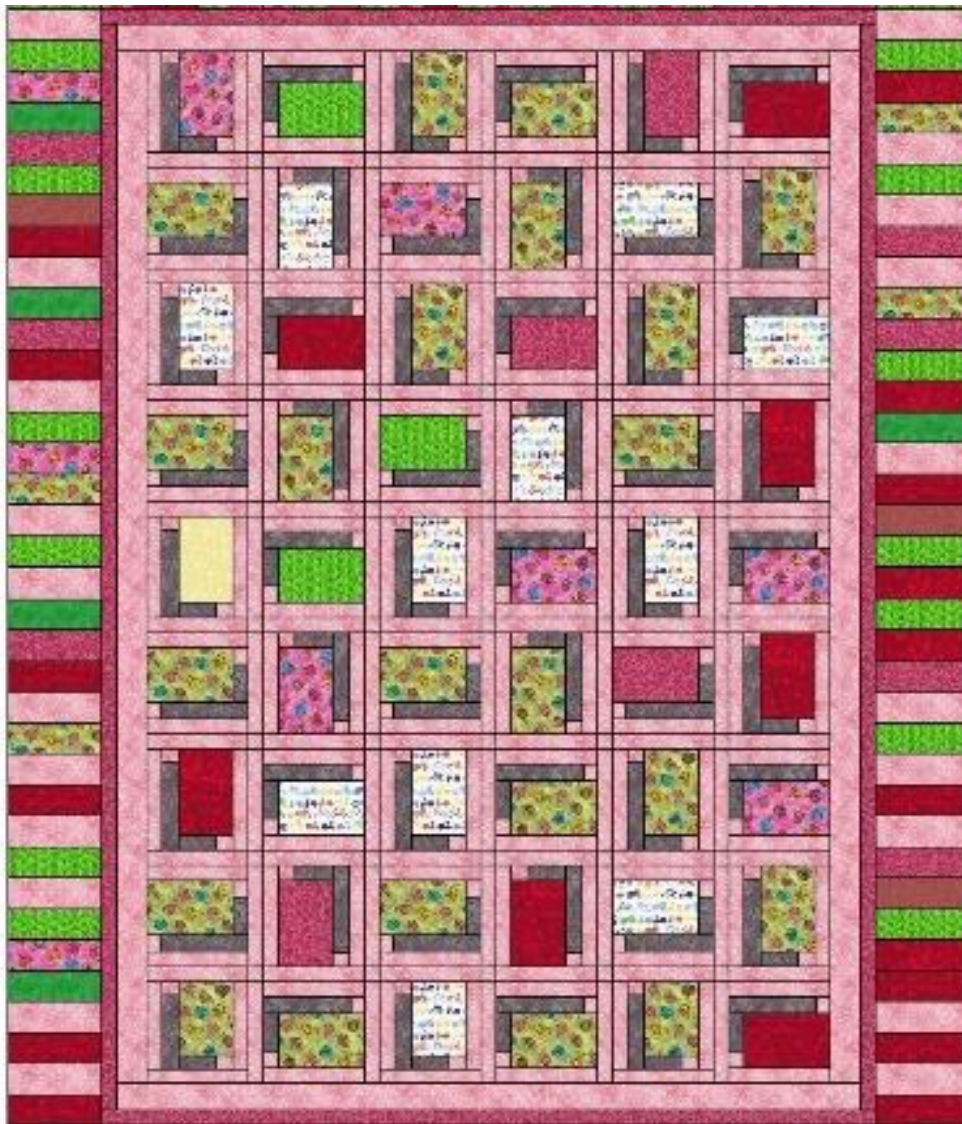
**C. Border 3 - Piano key border:**

**From various novelty prints used in the center of the quilt top:**

- 4 – 6.5" squares for the corner blocks
- 118 – 2.5"x 6.5" rectangles
- Sew together 35 of the rectangles in one long strip like this for each side.



- Add to sides.

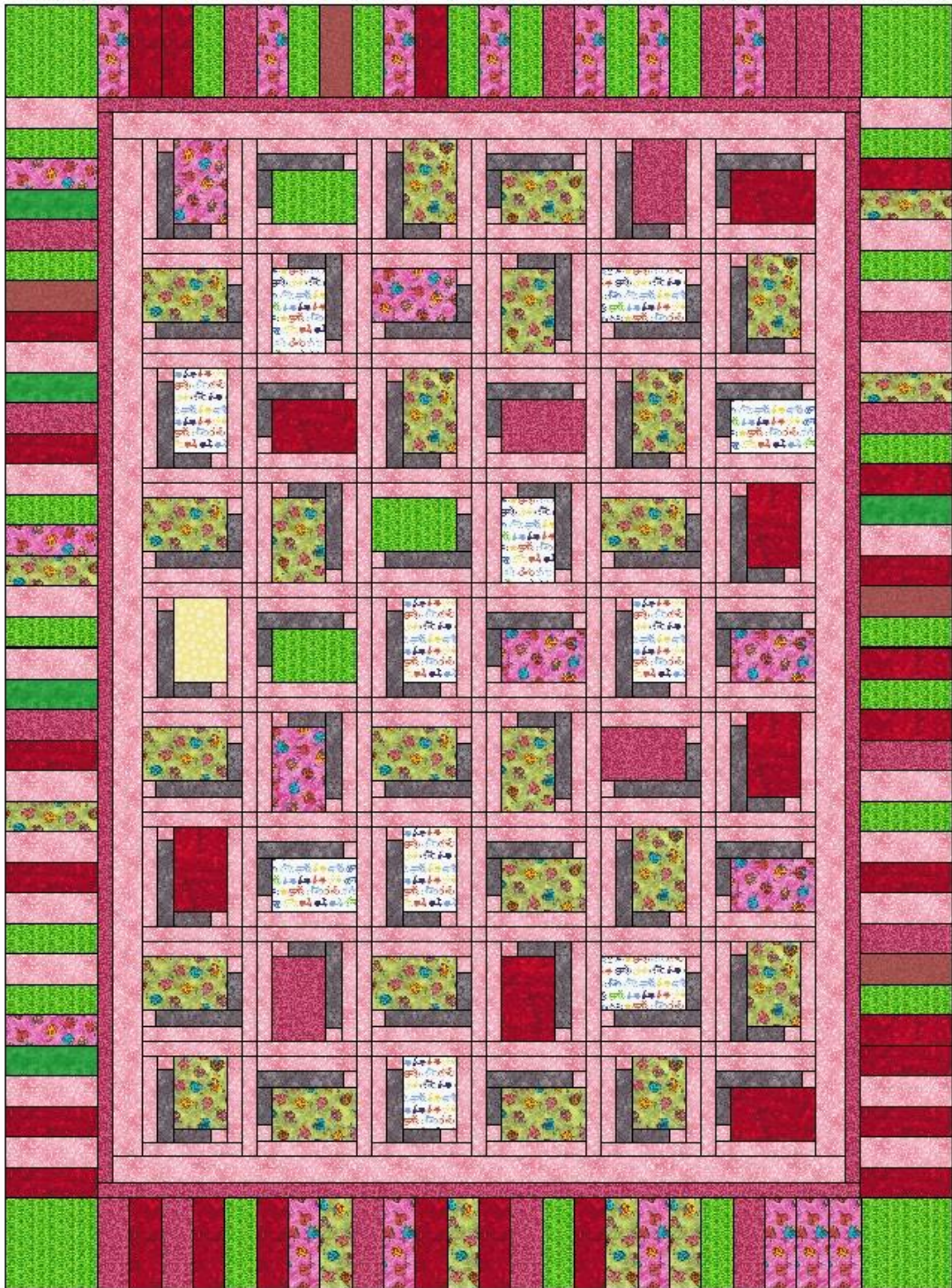


- Sew together 24 of the rectangles and add a corner square to the corners. Make 2.



- Add to the top and bottom.  
You are now finished!

Final layout for the quilt is this:



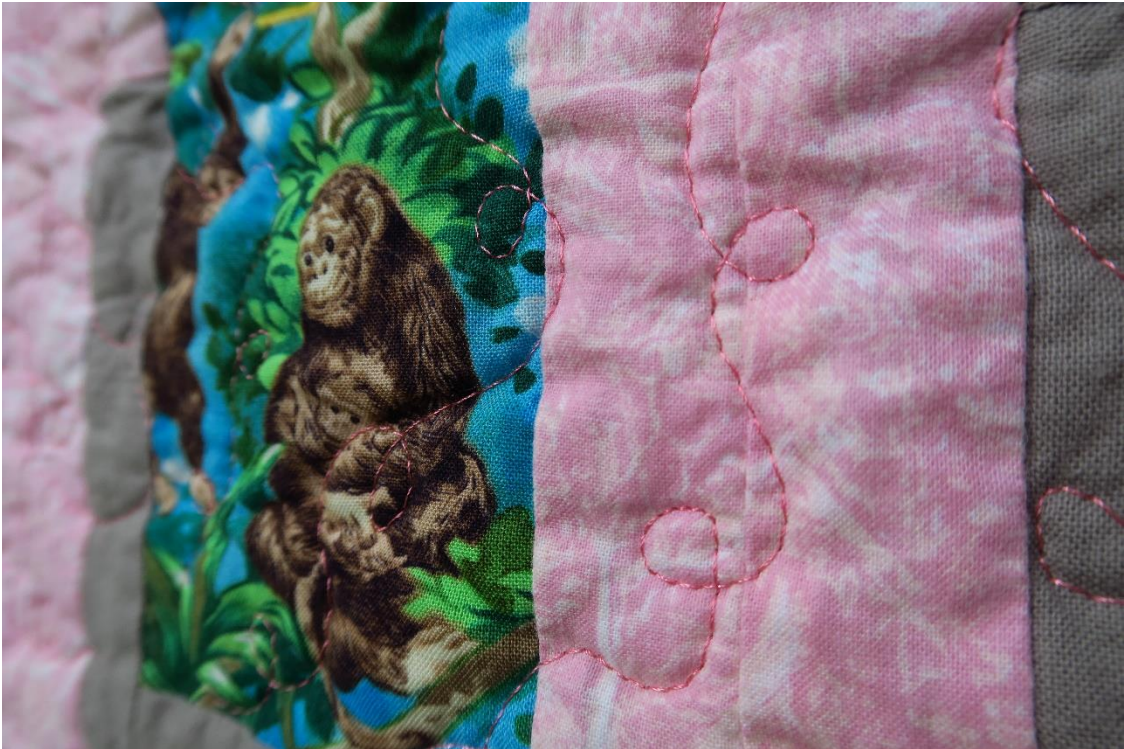
5. **Sandwich**, using whatever type of batting and backing you prefer
6. **Quilt** as desired.
7. **Bind**, using whatever method you wish.

Congratulations! Your quilt is finished!

Enjoy!



©



©