

Granny's Checkerboard

About 102" x 102"

To make the quilt pictured:



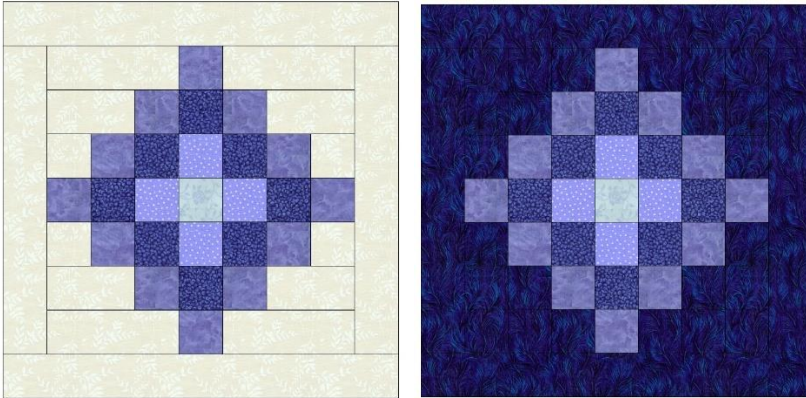
Becky Tillman Petersen

You need:

- 3-4 yards of various colored blue scraps for making the granny squares – I was using various pieces of shirting and clothing articles, so I am only going by what EQ says. Each granny square uses 25 – 2 ½" squares.

- 6 yards of cream for background – I'm kind of guessing here, since EQ calls for 18 7/8 yards which is crazy!
- 4 yards of navy blue for background – I'm kind of guessing here as EQ calls for 12 3/8 yards of blue which is crazy – esp. since I didn't have that much!
- 3/4 yards for the binding (I cut into 2½" strips and do a folded over binding)

This quilt consists of 1 main block. It measures 18½" x 18½" before sewn into the top. I did make it in two colorways, however. One has cream as the background and the other, navy.



Cut:

For each cream background granny square block:

From blues:

- You need to cut coordinating 2½" squares of your blue scraps in the following increments:
1, 4, 8, 12 coordinating in order to make your granny square look like mine.

From cream:

- 4 - 2½" x 2½" squares
- 4 - 2½" x 4½" rectangles
- 4 - 2½" x 6½" rectangles
- 2 - 2½" x 14½" rectangles

For each navy background granny square block:

From blues:

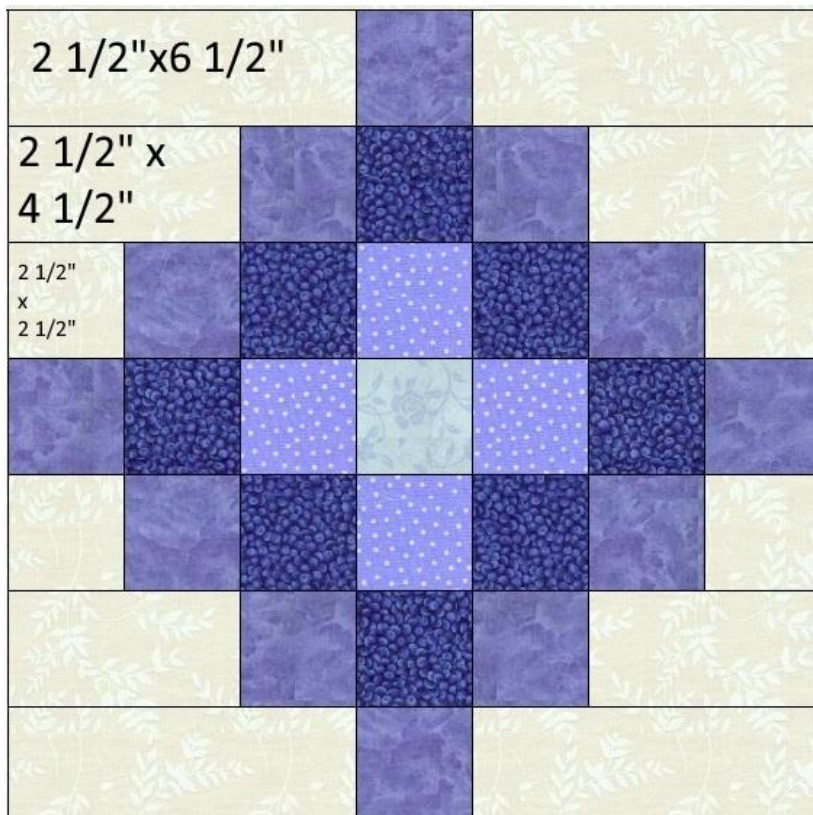
- You need to cut coordinating 2½" squares of your blue scraps in the following increments:
1, 4, 8, 12 coordinating in order to make your granny square look like mine.

From navy:

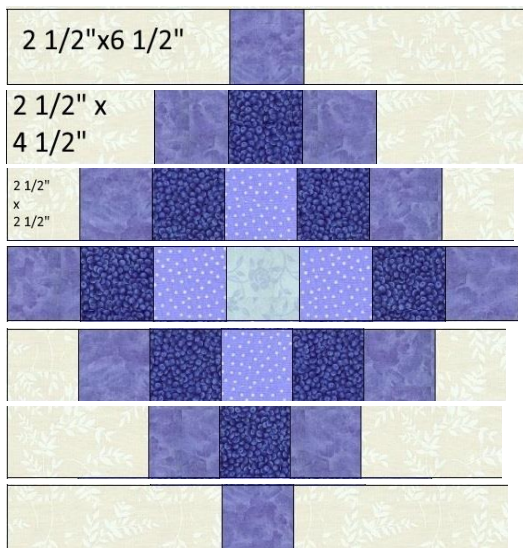
- 4 - 2½" x 2½" squares
- 4 - 2½" x 4½" rectangles
- 4 - 2½" x 6½" rectangles
- 2 - 2½" x 14½" rectangles

How to make the blocks:

I made the granny square blocks by first making the center section and then adding the outer frame.

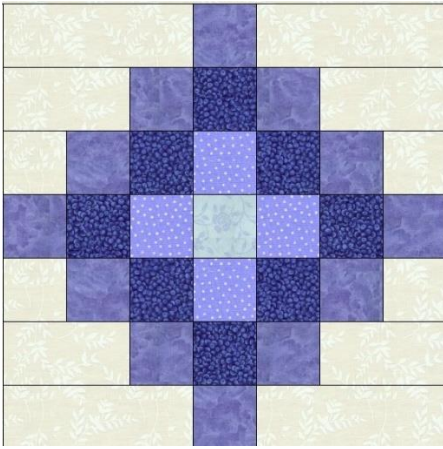


Sew together strips of off white and blues as shown on this diagram:



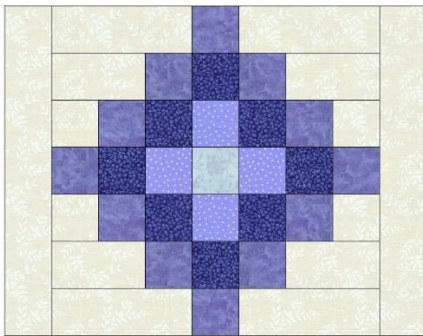
I made mine individually so as not to get confused. One at a time.

After you finish sewing the strips together, press your seams all one direction. Then, sew these strips together to form the center of the block:

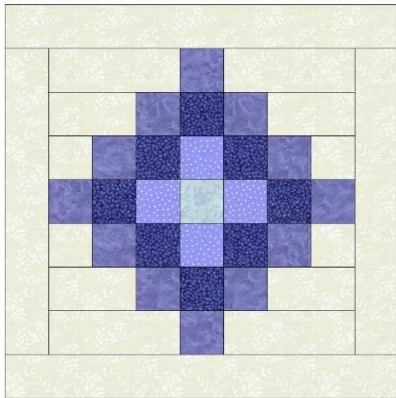


At this point the block will be $14\frac{1}{2}'' \times 14\frac{1}{2}''$.

Add the $2\frac{1}{2}'' \times 14\frac{1}{2}''$ cream strips to the sides like this:



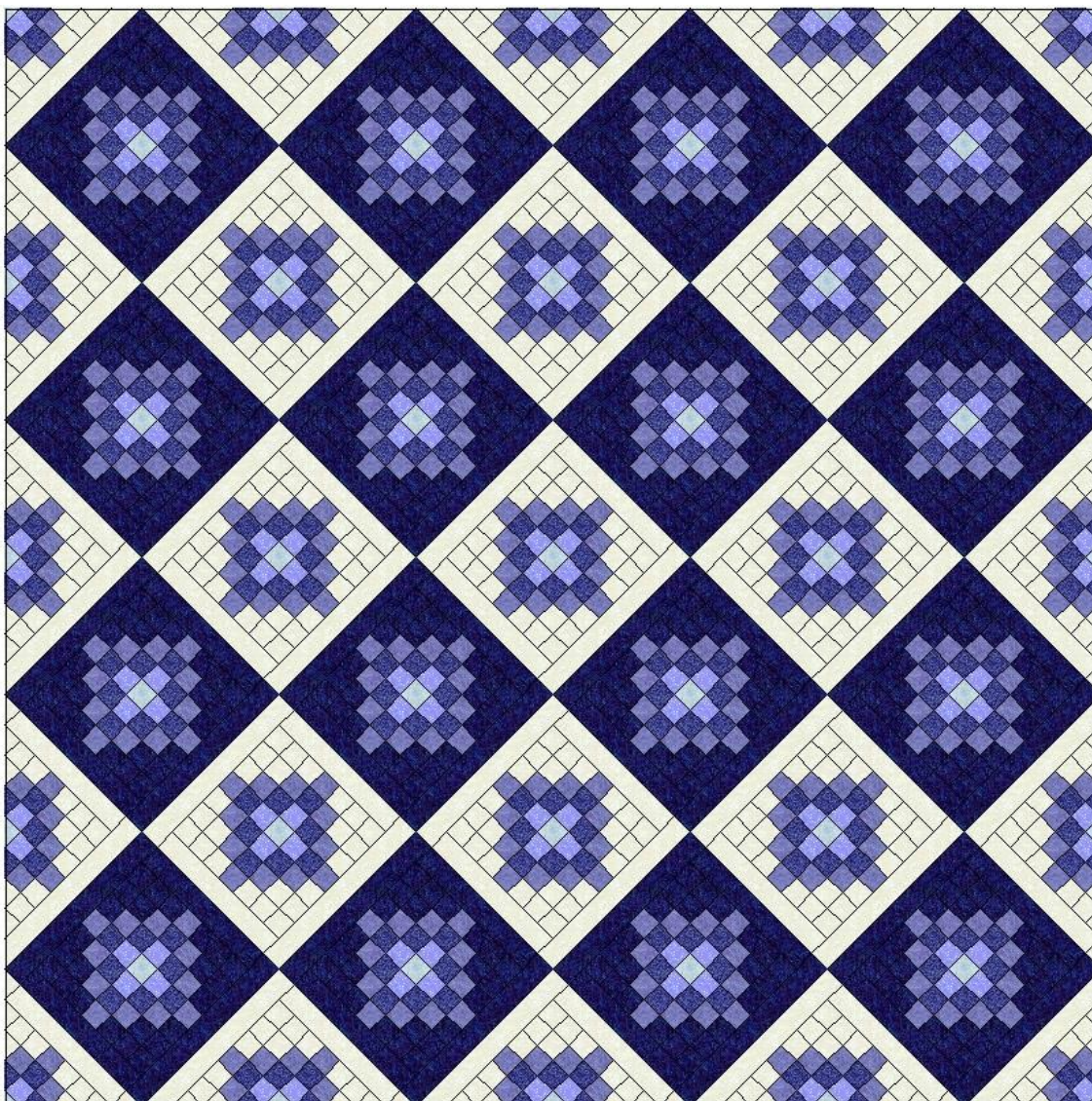
Then, after pressing well, add the $2\frac{1}{2}'' \times 18\frac{1}{2}''$ strips to the top and bottom:



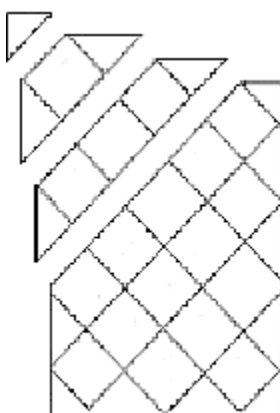
You will need to make 16 with navy as the background and 25 with cream as the background. Unfortunately! You will need 9 cream blocks "in full" – choose your favorite ones, and you will 12 for the side setting triangles (pictures at the end) and 4 for the corner setting triangles (trimming pics at the end)

How to make this quilt:

1. Using this diagram, place your blocks as shown below and sew together in rows. Look to the end of the pattern for more pictures showing how I laid this out and put the top together.



Starting in the top left corner, sew your rows together and side setting triangles to form a row.
I leave the 4 corner pieces until very last.



See pictures at the end on how to trim your cream granny square blocks to form the setting triangles as shown.

2. **Press well.**
3. **Sandwich**, using whatever type of batting and backing you prefer.
4. **Quilt** as desired. I used all over hearts.
5. **Bind**, using whatever method you wish.

Congratulations!
Your quilt is finished!

©2018 Becky Tillman Petersen

This one was a lot of fun for me as I really enjoy making granny squares. I think just making all the different combinations appeals to me. I only needed 12 of one to make the largest outer round – and the other two rounds – 8 and 4 plus a middle square. I enjoyed mixing and matching the designs for the rounds.

Sometimes I made the colors gradually darker or lighter, but sometimes I went light/dark/light/dark. Just take a look at the top I made for various examples.

Pictures for trimming the setting triangles.

How to cut for the side setting triangles: You will need 12 for this top.

Take one of your finished cream colored background granny square blocks and place it like this:



Put the ruler across it diagonally, but not right in the middle – instead, make the line come down about $\frac{1}{2}$ " to the outside of the middle.

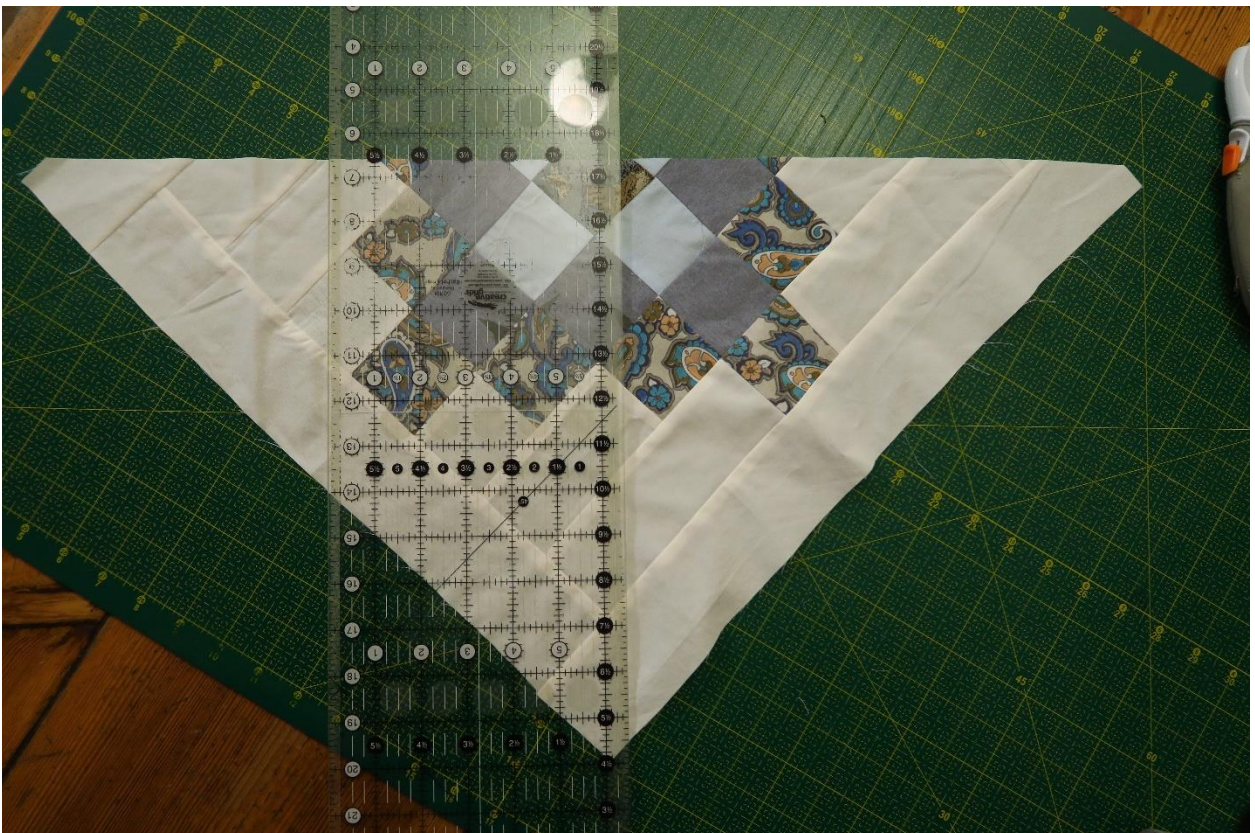
The bigger piece that is leftover is your side setting triangle. Put the smaller piece into your scraps. It's a sad day, for sure. I am using them in my leftover blues crumb blocks.

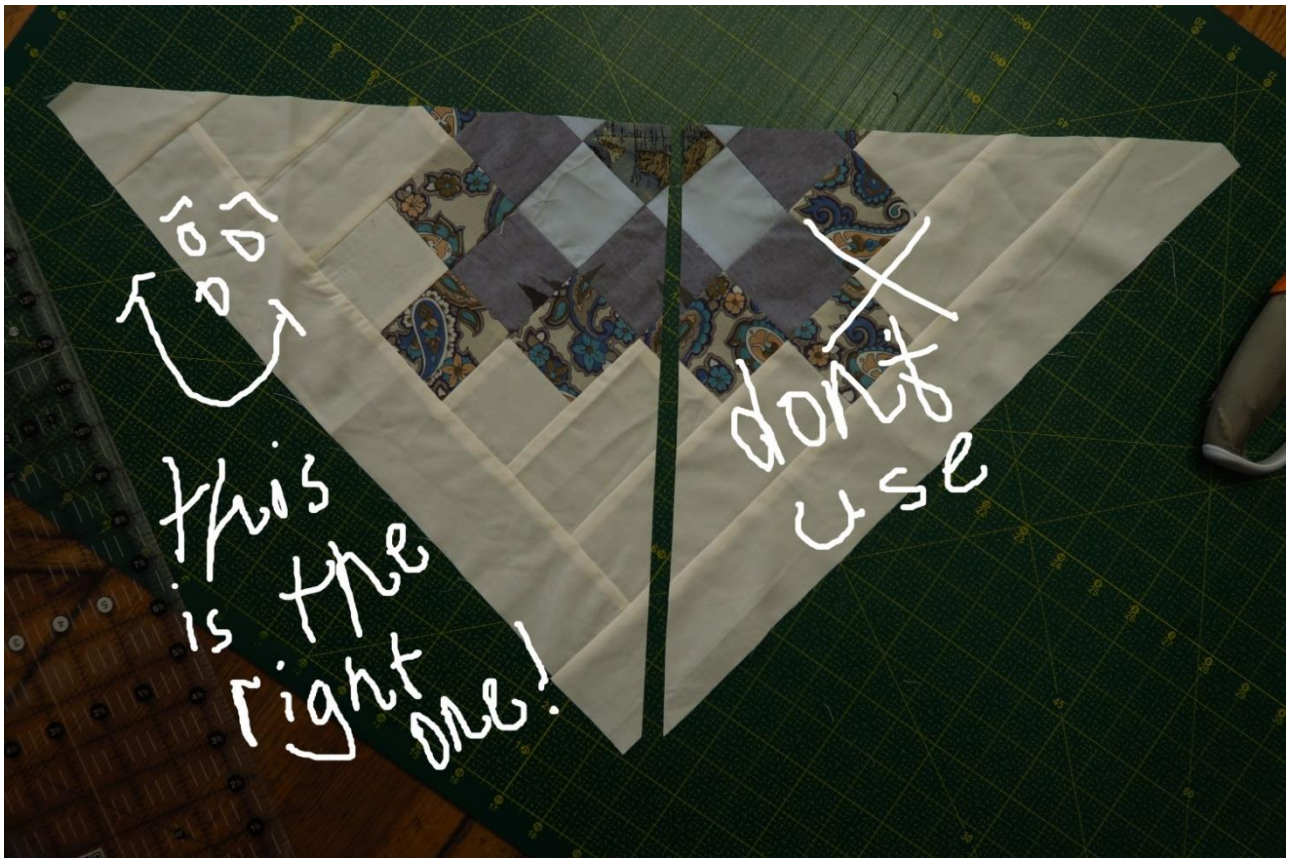
Here is one that is laid out in the quilt setting.



How to cut up a granny square to make the corner setting triangles: You need 4.

Cut the first cut as for the side setting triangles, then turn the big piece (the one without the x on it) and cut again – once again, about $\frac{1}{2}$ " to the outside of the middle as shown below:





When laying out the quilt – first decide that you like the layout and then add in the side setting triangles.





Trim side setting triangles - place into position



Sew into rows –



Sew all rows together to form the top as a whole and then add your corner side setting triangles which you should have cut by now.





Becky Tillman Petersen