

# Country Links

96" x 118"

To make the quilt pictured:



## You need:

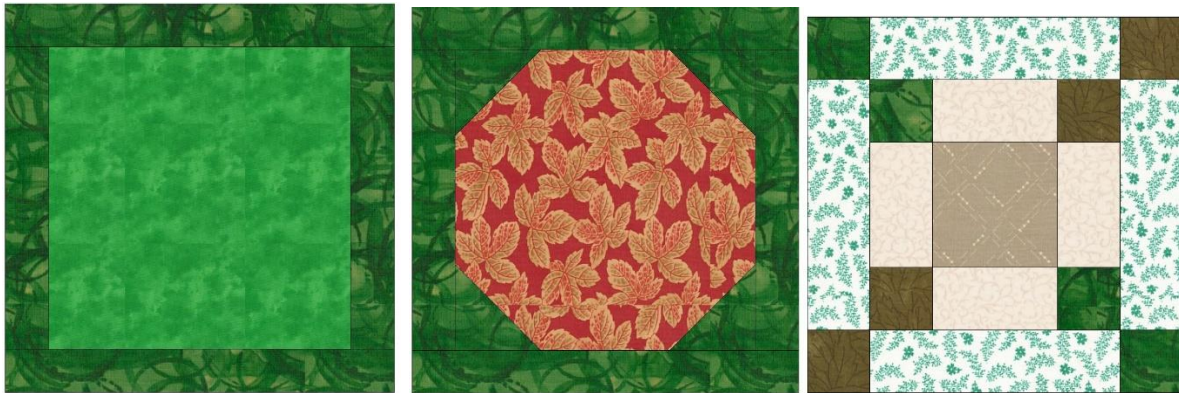
- 2 1/8 yards cream/off white 1 for sashing and first border
- 3/4 - off white/cream 2 for second light background
- 1 1/2 yards of light either cream 3 or very light green - third light background
- 1 1/2 yards dark green for chain and border 3
- 1/2 yard - Taupe/brown 1 for chain and border 2



- ½ yard Taupe/brown 2 for center squares
- 1½ yards of grass green for block edging and snowballing corners
- ¾ yard - Farm print 1 – for blocks with squares
- 7/8 yard Farm print 2 – for blocks with snowballed corners
- 3/4 yard of fabric for the binding.
- 2½ yards of scraps and pieces for the piano key border – I used all my leftover fabric plus went to my stash to provide a bit more variety – including sunflowers

**Note:** This quilt consists of 3 blocks – a 9.5” square, a 9.5” block that has snowballed corners and a 9.5” chain block

They look like this: They are 9½” as a block, but finish in the quilt at 9”.



## **Cut:**

### **Square blocks:** (15 total blocks)

From farm fabric #1:

- 15 – 7 ½” square of farm fabric

From green for block border:

- 30 – 1½”x 7½”
- 30 – 1½”x9½”

### **Snowballed blocks:** (16 total blocks)

From farm fabric #2:

- 16 – 7½” square of farm

From green for border and corners:

- 32 – 1½”x 7½”
- 32 – 1½”x9½”
- 64 – 2½” squares

### **Chain blocks:** (32 total blocks)

From brown/taupe 2 for center square:

- 32 – 3 ½” squares

From light/cream 3:

- 128 – 2”x 3½” rectangles

From very light green or another light cream 3:

- 128 – 2 ½" x 6 ½" rectangles

From dark green:

- 128 – 2" x 2" squares

From dark taupe/ brown 2:

- 128 - 2" x 2" squares

### **For sashings**

From white/cream 1:

- Cut 110- 2" x 9 ½" rectangles

### **For cornerstones:**

From taupe/brown:

- Cut 24 – 2" x 2" squares

From dark green:

- Cut 24 – 2" x 2" squares

### **Construct blocks:**

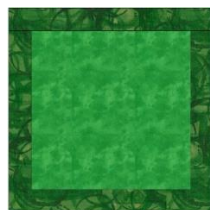
#### **How to make the square blocks:**



Sew a green 1.5" x 7.5" strip to the sides of your center farm print #1 7.5" square.



Sew 1.5" x 9.5" green rectangles to the top and bottom of this block. Your block is now finished: (Use your imagination that the center green is a farm print!)



Make 15.

## How to make the snowballed block:

- Take your 7½" farm fabric #2 square and snowball the corners using a 2½" green square on each corner.

How?

Place a 2½" green square on each corner of your 7½" square. RIGHT SIDES TOGETHER!

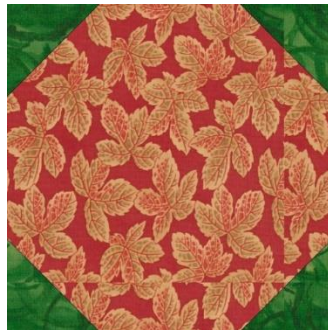
Sew across your 2½" square diagonally. For the sake of this diagram, the center leaf print is a farm print!

### 1. Sew on dotted lines

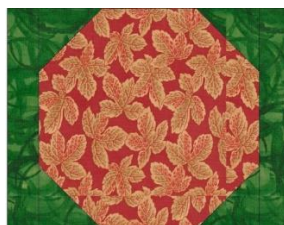


### 2. Trim on solid lines

Trim off excess. Press towards the outside. Do this to all four corners. Finished center of block looks like this:



Now sew a 1.5"x7.5" green strip to the sides of the center like this:



Then add top and bottom 1.5"x9.5" green strips:



Make 16.

## How to make the chain block:

The chain block look like this:



### 1. Make center blocks

- Put 2"x3½" light strips on either side of 3½" center taupe square:



- Sew a taupe/brown 2" square and a dark green 2" square to each end of a 2"x3½" cream 2 rectangle like this:



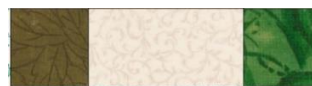
So.....



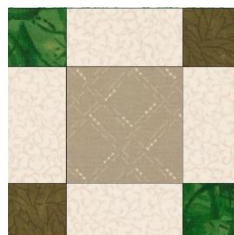
+



+



=



- Then sew very a light green 2"x 6.5" and a 2" dk. green square and 2" taupe/brown 2 square together like this:



Make 64 segments.

- Now add these pieces to the previous section like this:
- First add a light green/cream to the sides:



- Now add those segments you just made – watching carefully to put the taupe and green square in the right corners like this:



+



+



=

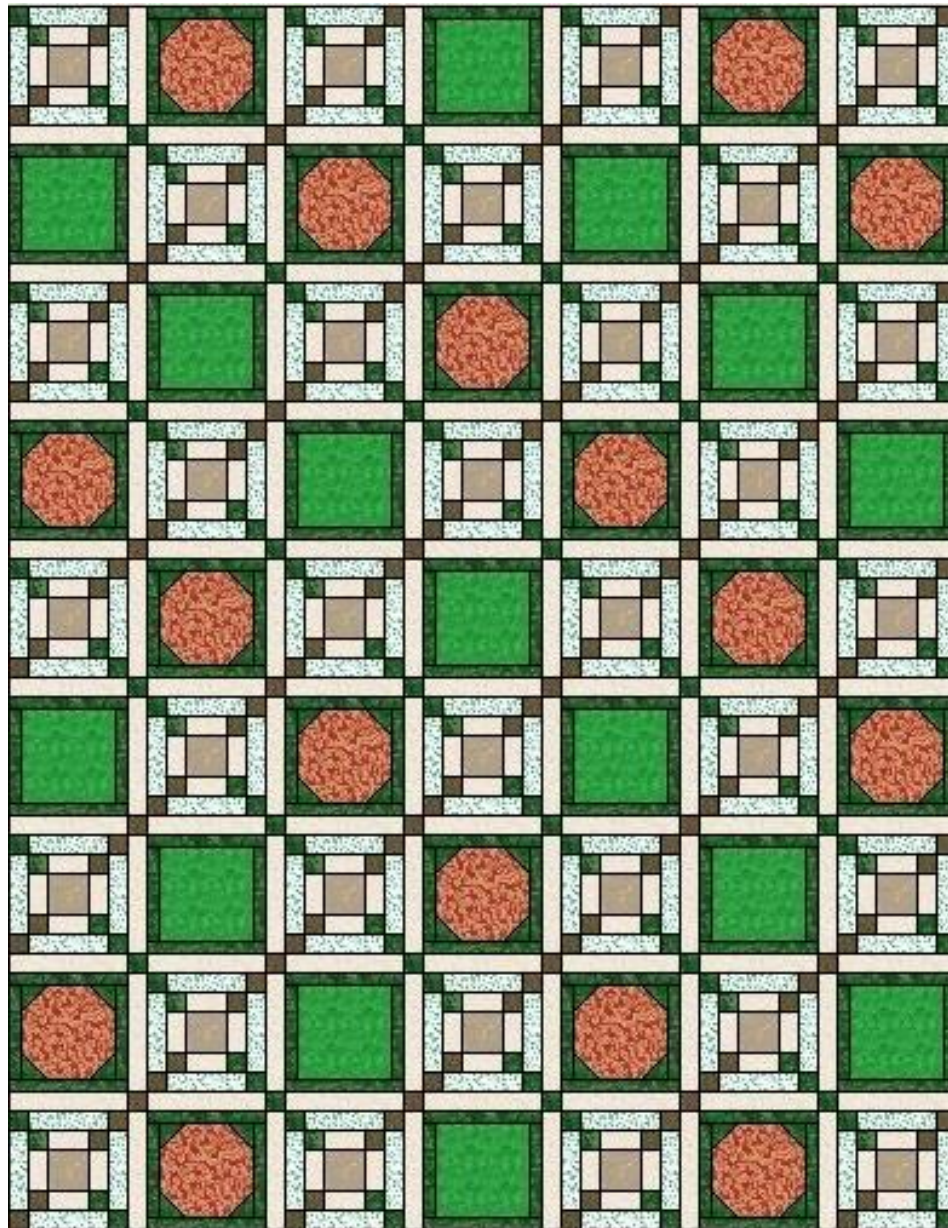


Make 32 chain blocks. They measure 9.5"x9.5" at this point.



## How to make this quilt:

1. **Construct your blocks as shown.**
2. **Lay out completed blocks according to this diagram.** They are 7 across and 9 down, starting with the chain block on the upper left. Watch for layout of the square and snowballed blocks. Also the



3. **Sew blocks** together in rows, inserting sashing where shown, and then sew the rows together. Sew sashing and cornerstones as indicated between rows. Use the previously cut pieces. Since my blocks were all directional, I added one row at a time, not trusting myself to not make mistakes on placement.
4. **Press well.**
5. **Borders** - For borders, it is best to lay a long strip of fabric across the middle of your quilt and cut off to fit. Sew to each side. However, I will include the measurements that EQ says your borders need to be.

- A. The first border: white/cream 1 – same fabric as sashing –  
 Cut 2 –  $2\frac{1}{2}$ " x 93.55" (for the two sides) and  
 Cut 2" x 75.5" for the top and bottom. I usually attach borders starting with the sides. Piece as needed to get the length.
- B. Second border: brown/taupe fabric –  
 Cut 2 –  $2\frac{1}{2}$ " x  $96\frac{1}{2}$ ". Attach to the sides.  
 Cut 2 -  $2\frac{1}{2}$ " x  $79\frac{1}{2}$ ". Attach to the top and bottom.
- C. Third border: green –  
 Cut 2 – 3" x  $100\frac{1}{2}$ ". Attach to sides.  
 Cut 2 –  $3\frac{1}{2}$ " x  $84\frac{1}{2}$ ". Attach to top and bottom.
- D. Fourth border – piano key –  
 Cut 190  $2\frac{1}{2}$ " x  $6\frac{1}{2}$ " rectangles out of scraps and leftover fabrics. For the corner half square triangles (HST) cut 2 7" squares from your tractor/farm fabrics and 2 7" light squares, draw a line across the middle diagonally and sew  $\frac{1}{4}$ " on each side of the line. Cut across the middle (between lines of stitching) to create two 6.5" HST.

For making piano key border sew 53 strips together like this: Make 2.



Attach to the sides

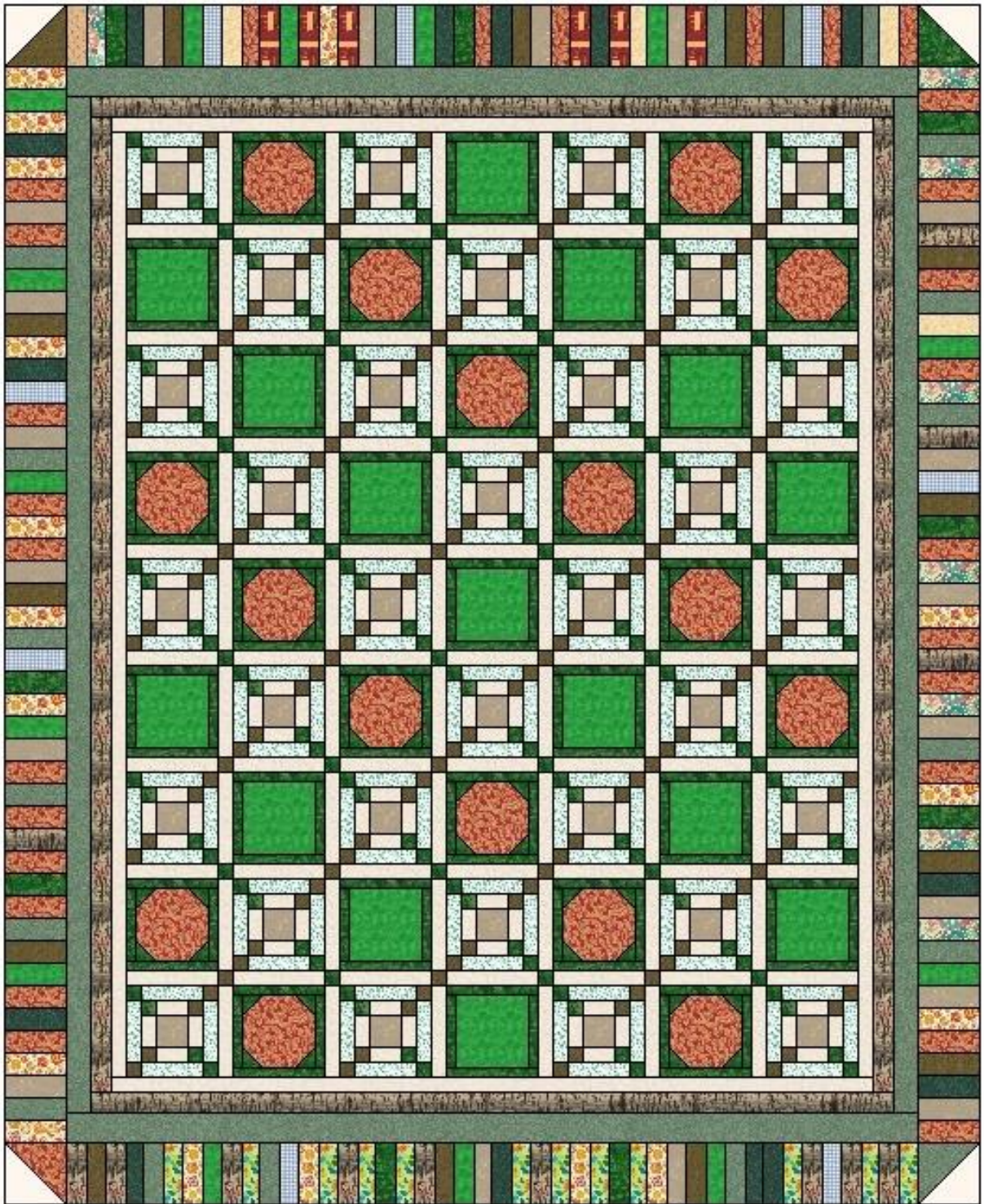
Sew 42 strips together Add a  $6\frac{1}{2}$ " HST to each end, placing as pictured. Make 2.

Attach to the top and bottom.



The whole layout diagram looks like this:





6. **Sandwich**, using whatever type of batting and backing you prefer
7. **Quilt** as desired I used loops all over.
8. **Bind**, using whatever method you wish.

Congratulations! Your quilt is finished!



Here's a close up of the center:

