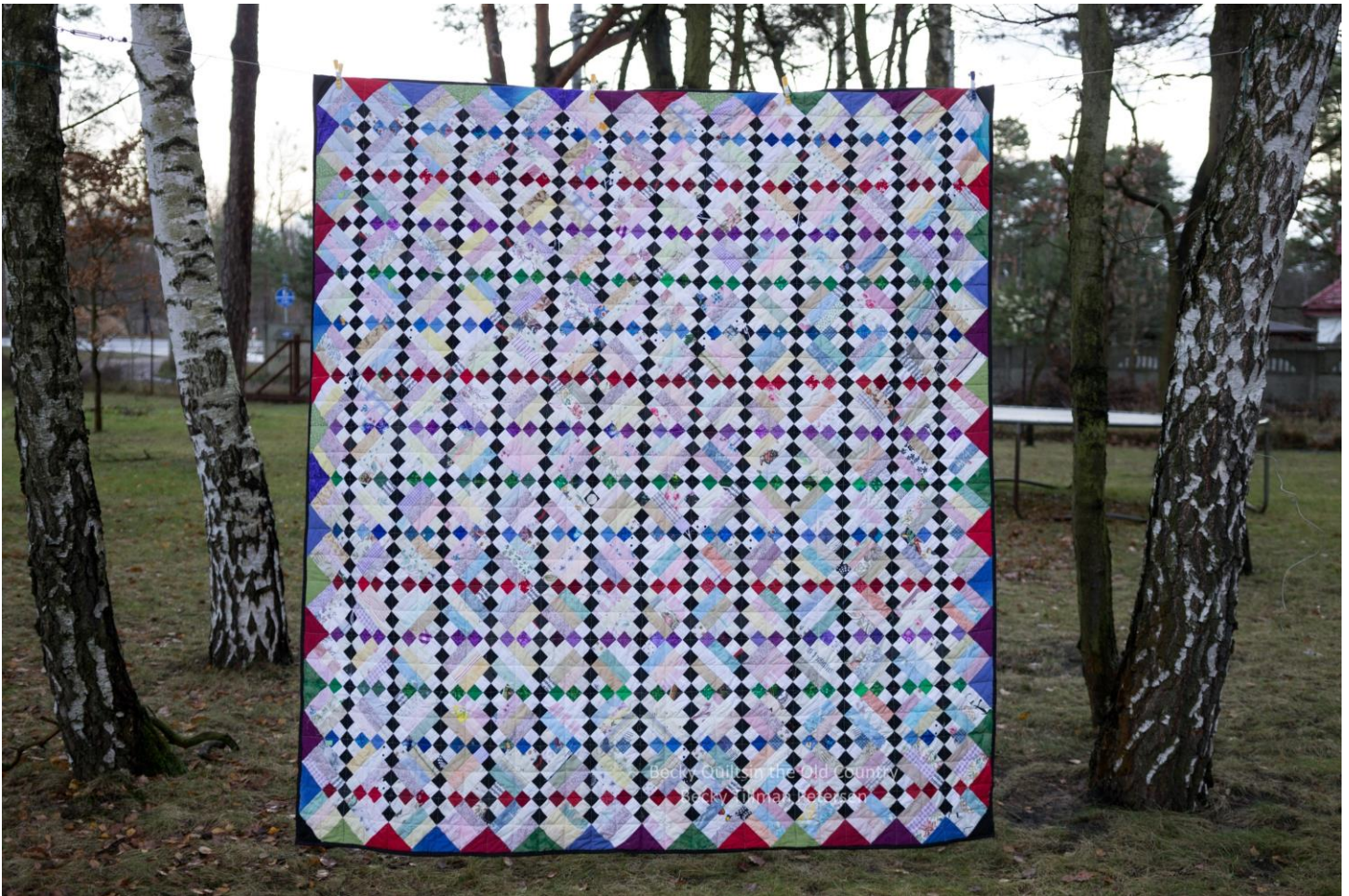


# Colorful Chains

Top finishes at 91"x97" (approximate measurements)

To make the quilt pictured:



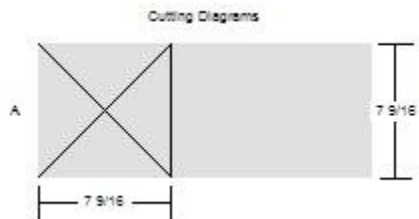
## You need:

- For the chains across and down:
  - Black – 1 5/8 yards
  - Red – 3/8 yard
  - Blue – 3/8 yard
  - Purple – 3/8 yard
- 6.5 yards of very light pastels or fabrics that will fade into the background
- 1 yard of various bold colored scraps for edge side and corner setting triangles
- ½-5/8 yard of fabric for the binding. (I used scrappy 2.5" strips.)

## **Cut:**

- From various pastels and very lights :  
630 – 2"x 5"  
728 – 2"x2" squares
- From black:  
542 – 2"x2" squares
- From red:  
104 – 2"x2" squares
- From blue:  
104 – 2"x2" squares
- From green:  
78 – 2"x2" squares
- From purple:  
78 – 2"x2" squares
- From various darks – mimicking the red, blue, purple, green in the center chains:  
54 - side setting triangles:

Cut an 8" square and then cut it in half again two times, diagonally, to make 4 side setting triangles: OK, OK, the EXACT measurements you should cut are in this diagram, but I always go bigger and then trim down later, after the top is finished:



**You will need a total of 54 of these side setting triangles!**

4 corner triangles:

Cut a piece of colorful (red, orange, purple, green, etc.)

4.5"x4.5" and then cut it one direction across diagonally. One square yields 2 corner triangles.

The EXACT measurements you are supposed to cut it are these but I always round UP and then trim once the top is quilted before I bind.

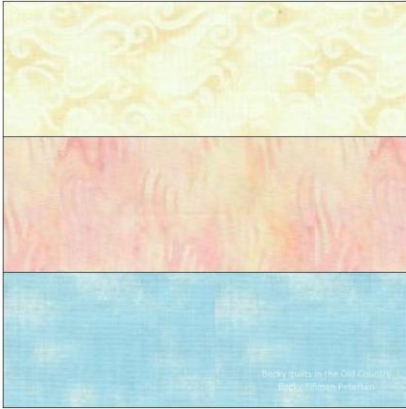


**You need 4 for the 4 corners of your top!**

## Construct Blocks:

*Note: The entire quilt is made up of two different blocks:*

- **Rail fence:** Using three of your very light/pale colored 2"x5" strips, sew together (as shown) to form a rail fence block. Press.

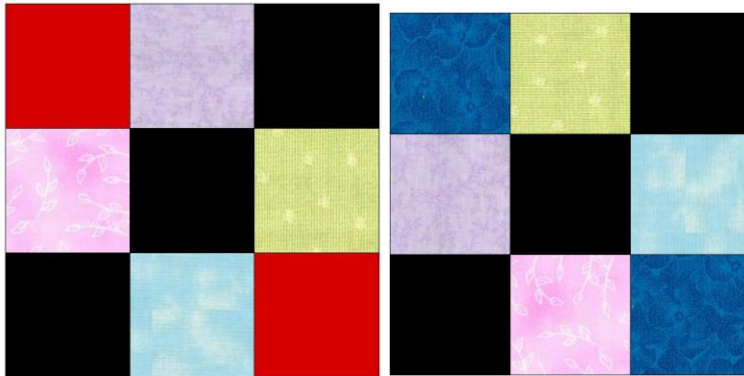


Make 210 rail fence blocks.

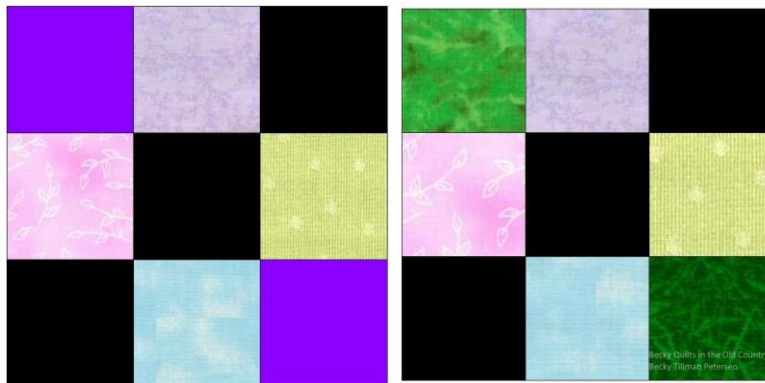
- **9 Patch:**

You need 4 different colorings of the 9 patch block. They look like this:

Make 52 with red and 52 with blue with these layouts



Make 39 with purple and 39 with green with these layouts



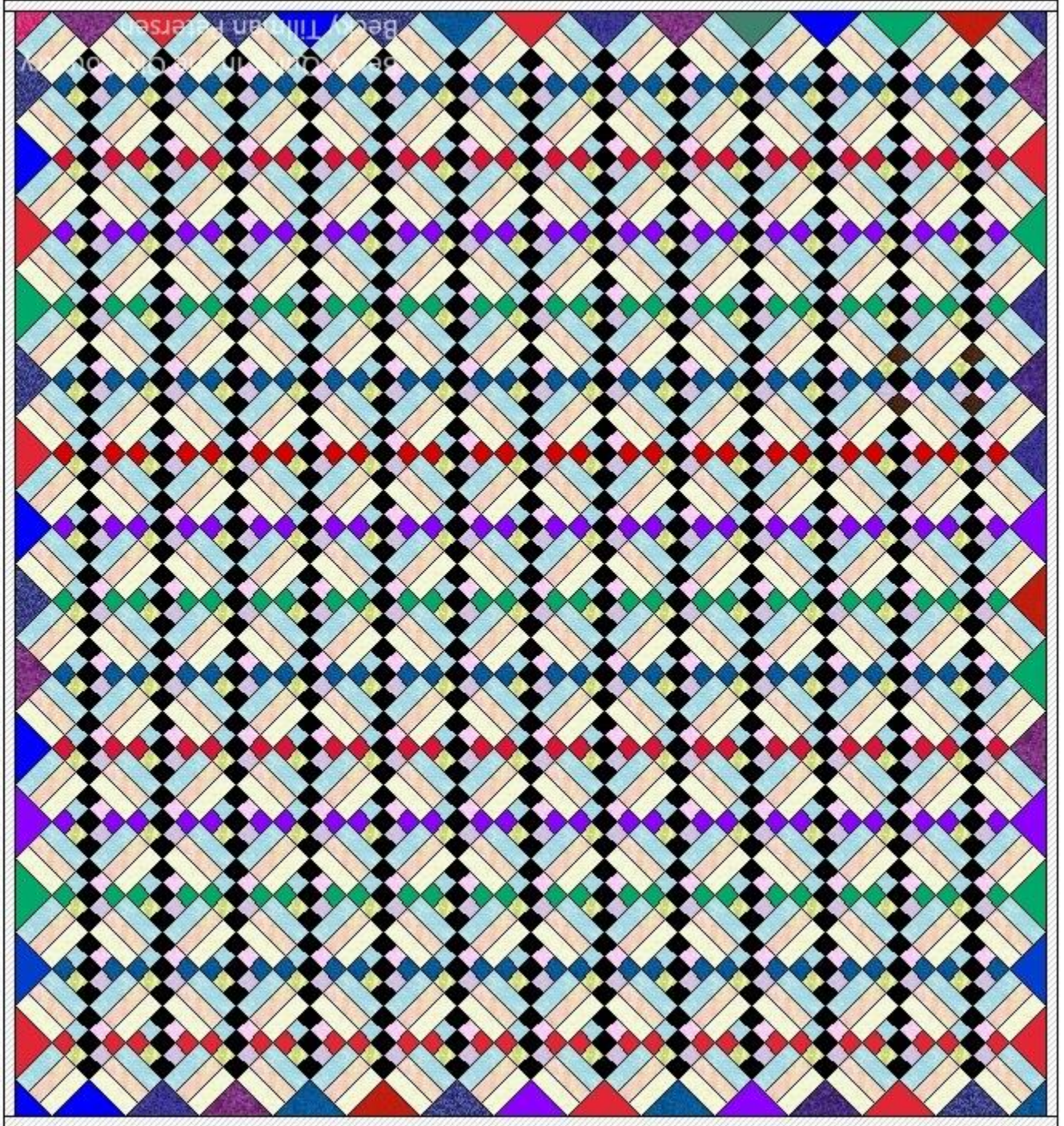


*Make sure to keep the pastel colored blocks light for contrast!*

If you do not know how to make 9 patch blocks, please do a google search and find videos or tutorials explaining this. I am assuming you already know how to make these. (There is no shame if you do not know yet, but in this edition of the pattern I do not explain it.)

### **How to make this quilt:**

1. **Lay out completed blocks according to diagram**



2. **Sew together in rows, starting in the corner, but I leave the actual corner triangle til very last. Since this quilt is constructed “on point”, follow the diagram and sew your blocks together, starting with the**



side setting triangles. Here is a picture of “construction”. I am using my bed as my design wall. Usually I use my living room rug.



*The only tricky part of this one is making sure the chains go the right direction so that the colors form the chain!*

For further instruction and clarity on constructing a quilt “on point”, please google it. It is not included in this pattern. Don’t forget to put the 4 corner triangles on last.

3. **Press well.**
4. **Sandwich**, using whatever type of batting and backing you prefer.
5. **Quilt** as desired. After quilting, trim along the edges, squaring up and eliminating the extra fabric that will be hanging off, uneven from having your setting and corner triangles a little too large.
6. **Bind**, using whatever method you wish.

Congratulations!

Your quilt is finished!

Enjoy!