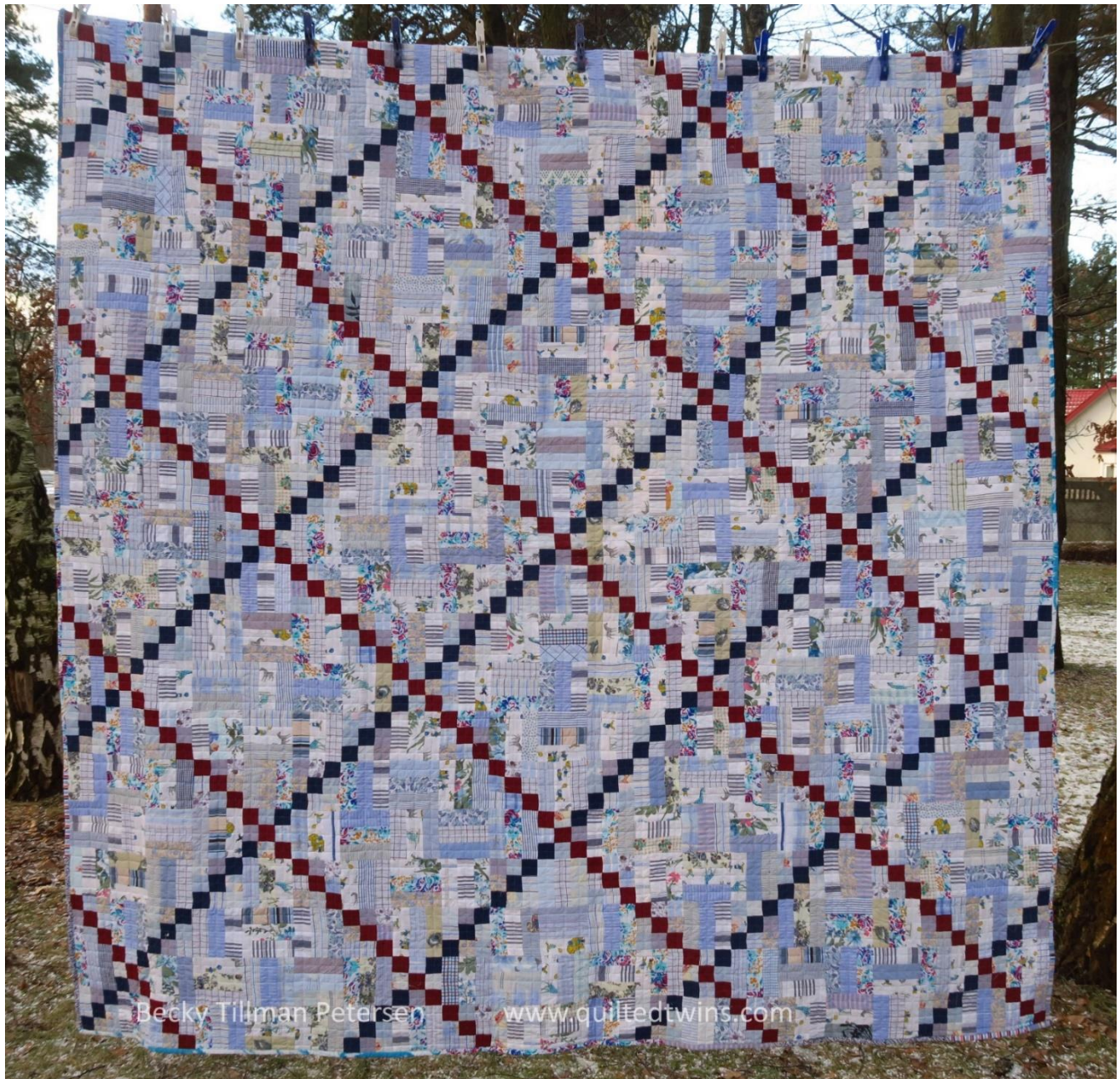


Chains and Rails

94.5"x94.5"

To make the quilt pictured:



This quilt is made up of two different 14" blocks (before sewing into the top) and look like this:



and



One of the “easy” things about this quilt is there is no sashing, no cornerstones and no borders!

You need:

- 8 5/8 yards of light or “low volume” blues – I tried to keep it to white background and softer colors on top of the white blues
- ¾ yard of navy
- ¾ yard of burgundy
- ¾ yard of whatever you wish to use for the binding. I use 2.5” strips and fold in half for extra strength.

Cut:

Block 1: (25 blocks)



Note:

For EACH block you will need these pieces:

From low volume blues:

- 12 – 2”x5” rectangles (300 total)
- 28 – 2” squares (700 total)

From navy:

- 9 – 2” squares (225 total)

From burgundy:

- 8 – 2” squares (200)

Block 2: (24 blocks)



From low volume pieces:

27 – 2"x5" rectangles (648 total pieces) - You can see why this helped me use up my light blues!

How to make these blocks:

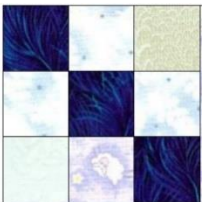
Block 1: Chain block



Make chain segments:

Using your navy squares and low volume/light blue 2" squares, make 2 9 patches like this for each block (total 50):

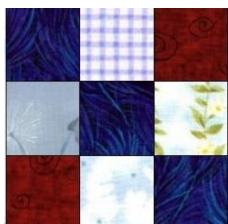
(9 patch segments should measure 5" squares)



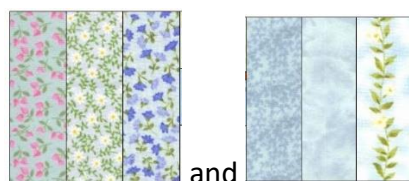
Using burgundy squares and low volume/light blue 2" squares, make 2 – 9 patches like this for each block (total 50).



Using your burgundy and navy squares and your light blue/low volume squares, make a 9 patch like this:



Make rail fence segments using your 2"x5" low volume or light blue strips by sewing together 3 of your strips together to form a square like this:

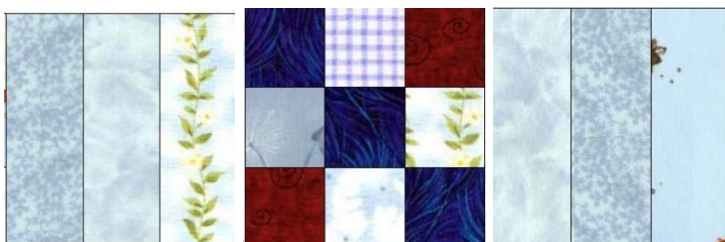


They will be 5" square at this point. You will need 4 of these for each of these blocks – make a total of 100 of these little rail fence segments for all these chain blocks.

Now put together your blocks into a 9 patch like this:



+



+



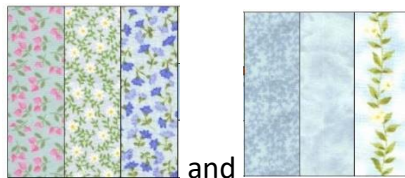
=



Block 2: Rail fence block



Make your rail fence segments by sewing together three of the low volume/light blue 2"x5" strips together like this:



They will be 5" square at this point. You will need 9 of these for each of these blocks – make a total of 216 of these little rail fence segments for these blocks.

Now put them together in a 9 patch:





+



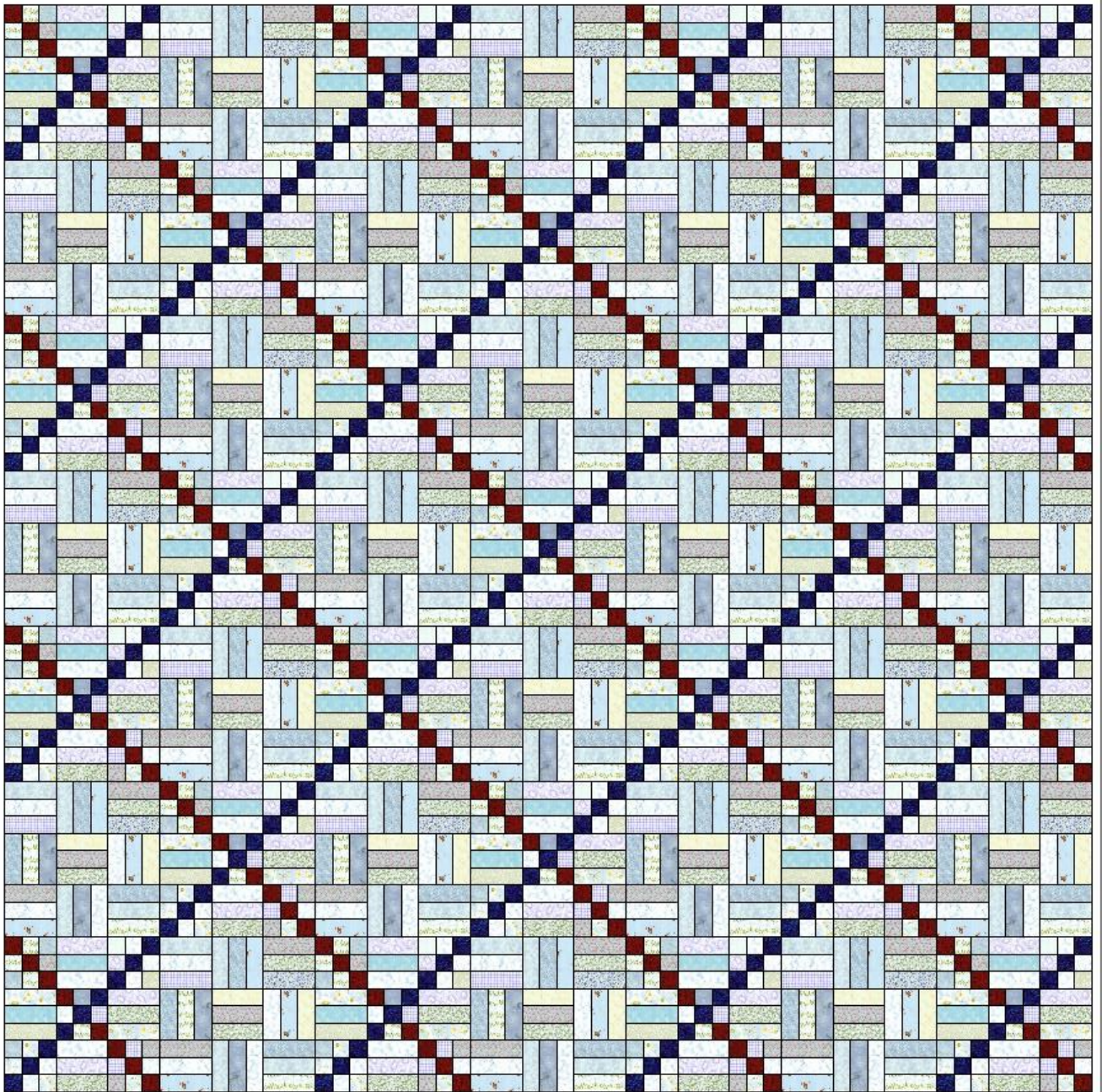
=



They finish at 14"x 14" before being sewn into the quilt. You need 24 of these for a quilt the size I made.

How to make this quilt:

1. Using this diagram, place your blocks into rows. First sew the blocks into rows and then sew the rows together.



This is a 7x7 layout. Super easy and quick yet it looks nice!

2. **Press** well.
3. **Sandwich**, using whatever type of batting and backing you prefer.
4. **Quilt** as desired.
5. **Bind**, using whatever method you wish.

Congratulations! Your quilt is finished!



Becky Tillman Petersen www.quiltedtwins.com



Becky Tillman Petersen www.quiltedtwins.com