

# Central Point

66"x83"

To make the quilt pictured:



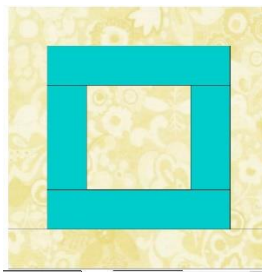
This quilt is made up of one 12.5" block and it looks like this:

There are also sashing strips and cornerstone blocks like these:





and



which measure 5.5"x 12.5" and

5.5" square respectively.

## **You need:**

- 7/8 yards of novelty horse fabric
- 1 7/8 yard of off white or sand colored fabrics – I used a variety
- 7/8 yard of blues and turquoise fabrics for bordering the main blocks
- 1 5/8 yards of turquoises for the triangle sashing blocks
- 5/8 yards of dark turquoise for inner border
- 1 1/8 yard of turquoise for outer border
- 1/2 yard of your choice for binding.

## **Cut:**

### **For main blocks: (20)**



From novelty fabric:

- 20 – 9.5" squares

From turquoise:

- In sets for each block so that they can match – 2x – 2"x9.5" and 2"x 12.5"

### **For sashing blocks:**

Using the templates given at the end of the pattern, for each sashing strip, cut 3 turquoise rectangles and 6 sand or off white colored triangles as shown below – 3 facing one direction and 3 facing the other direction for a total of 93 turquoise centers and 186 off white or sand colored triangles – with half facing one direction and half facing the other.

### **For cornerstone blocks:**

From sand colored fabric (or off white):

- 20 – 2 1/2" square

- 40 – 1¼" x 4" rectangles
- 40 – 1¼" x 5½" rectangles

From turquoise:

- 40 – 1¼" x 2½" strips
- 40 – 1¼" x 4" strips

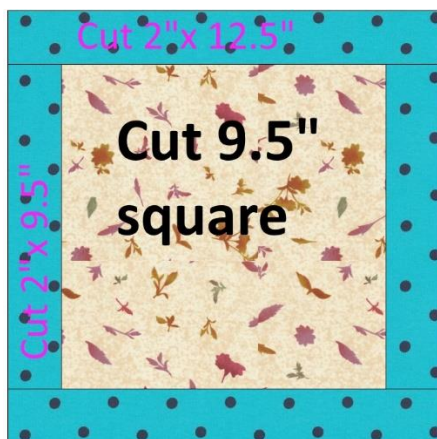
**Border will be dealt with under "How to put together this quilt"**

## **Construct blocks:**

**The main block:**



Take your 9.5" square of novelty print fabric and add the 2"x9.5" turquoise strips to the sides and then 2"x 12.5" turquoise strips to the top and bottom. It's that easy. Press the seams towards the darker outer border.



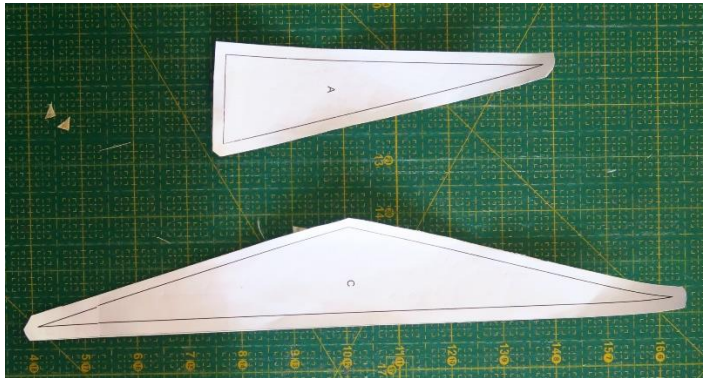
Your main block now should be 12.5" square.

**The sashing block:**



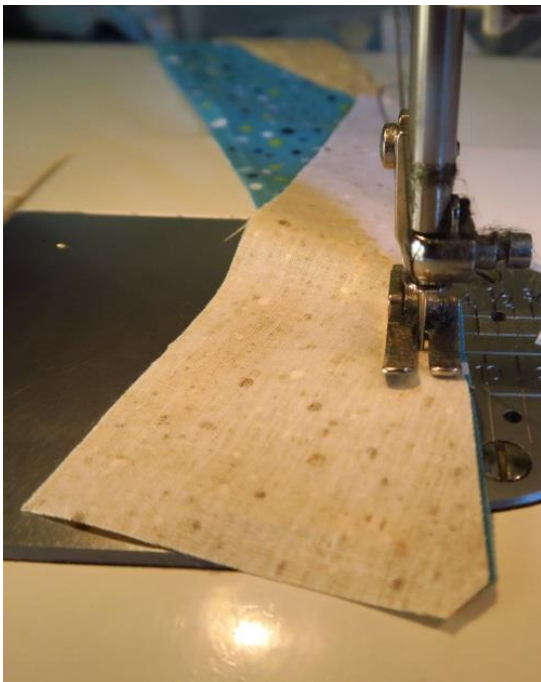
You will need to cut out the template as given to you at the bottom of the pattern. This is the easiest way I could figure out to make these blocks.

Let me show you a series of pictures I took to help you make these blocks.

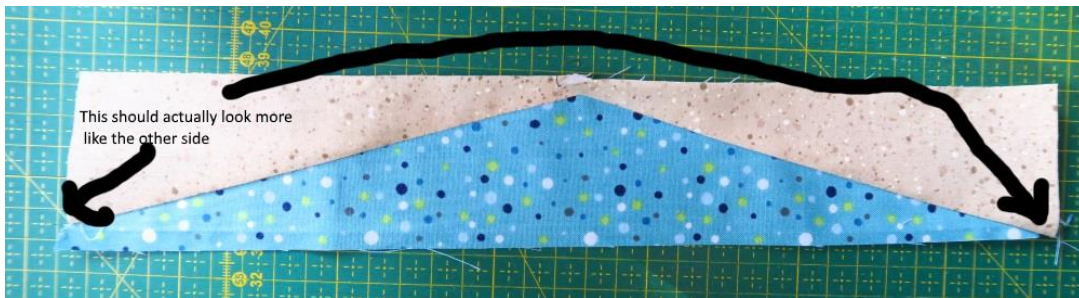
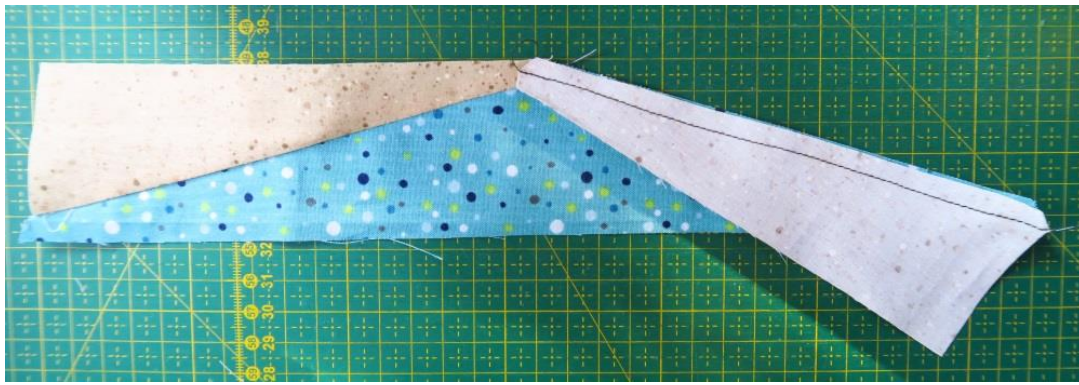












What I did with blocks like the one above – when sewing to the top or other sashing strip, I kind of worked it around and took up more or less seam allowance to help even it out.

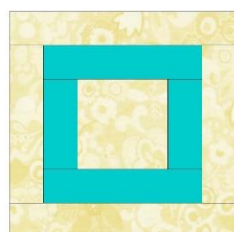
You will need to make 93 of these rectangular triangles. Sew three of them together to form one block that looks like this:



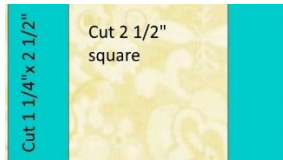
Mine were less than ideal. I think if I did this again, I would do much better. I had never done such “flat” triangles before. But even if you are less than perfect, they give the look that I was going for.

Make 31 sashing strips. They should finish at  $5\frac{1}{2}$ " x  $12\frac{1}{2}$ " at this point.

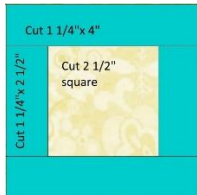
**The cornerstone blocks:**



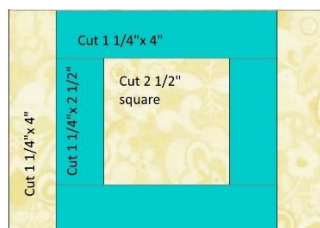
To your center  $2\frac{1}{2}$ " square, add the  $1\frac{1}{4}$ " x  $2\frac{1}{2}$ " turquoise rectangles to the sides



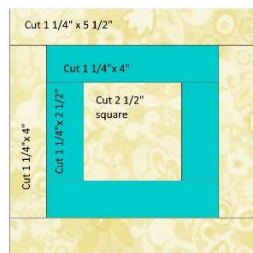
Then add the  $1\frac{1}{4}$ " x 4" rectangles to the top and bottom



Now add the sand colored  $1\frac{1}{4}$ " x 4" strips to the sides:



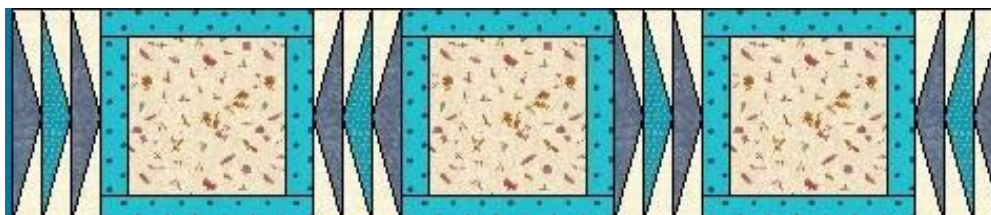
And finally add the  $1\frac{1}{4}$ " x  $5\frac{1}{2}$ " rectangles to the top and bottom:



Make 20. They should measure  $5\frac{1}{2}$ " square at this point.

### How to put together this quilt:

1. Construct your blocks as described above.
2. To make the center, using the diagram below, lay out the blocks and sew together in rows putting in sashing as pictured.



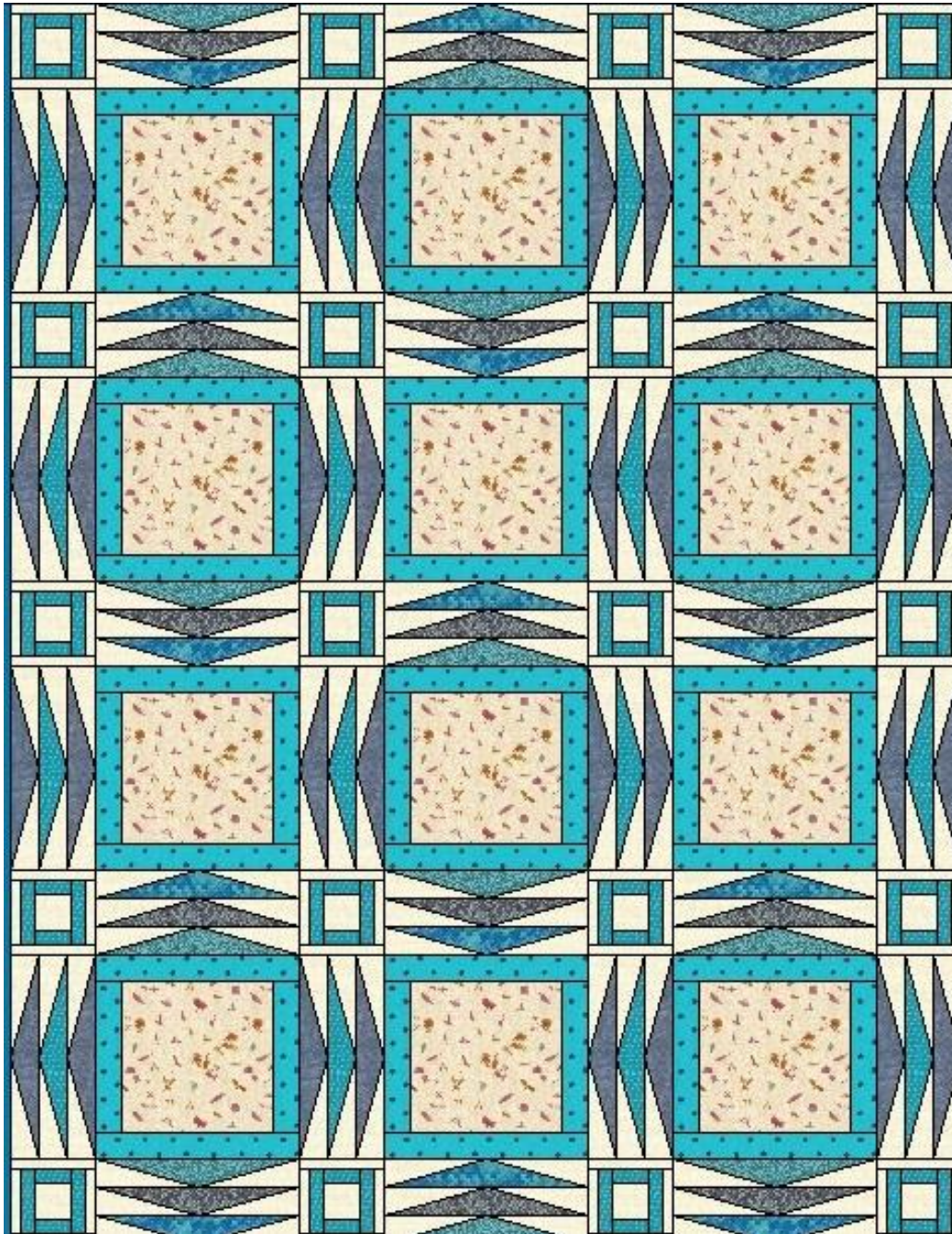
And a row of cornerstones/sashing/cornerstone/sashing, etc.





First sew the rows together and then sew the rows together. Be careful as to the direction of the sashing triangle blocks.

Repeat over and over until you get this:



**3. Add borders:** Cut and/or piece as necessary to get the length needed

**From dark turquoise:**

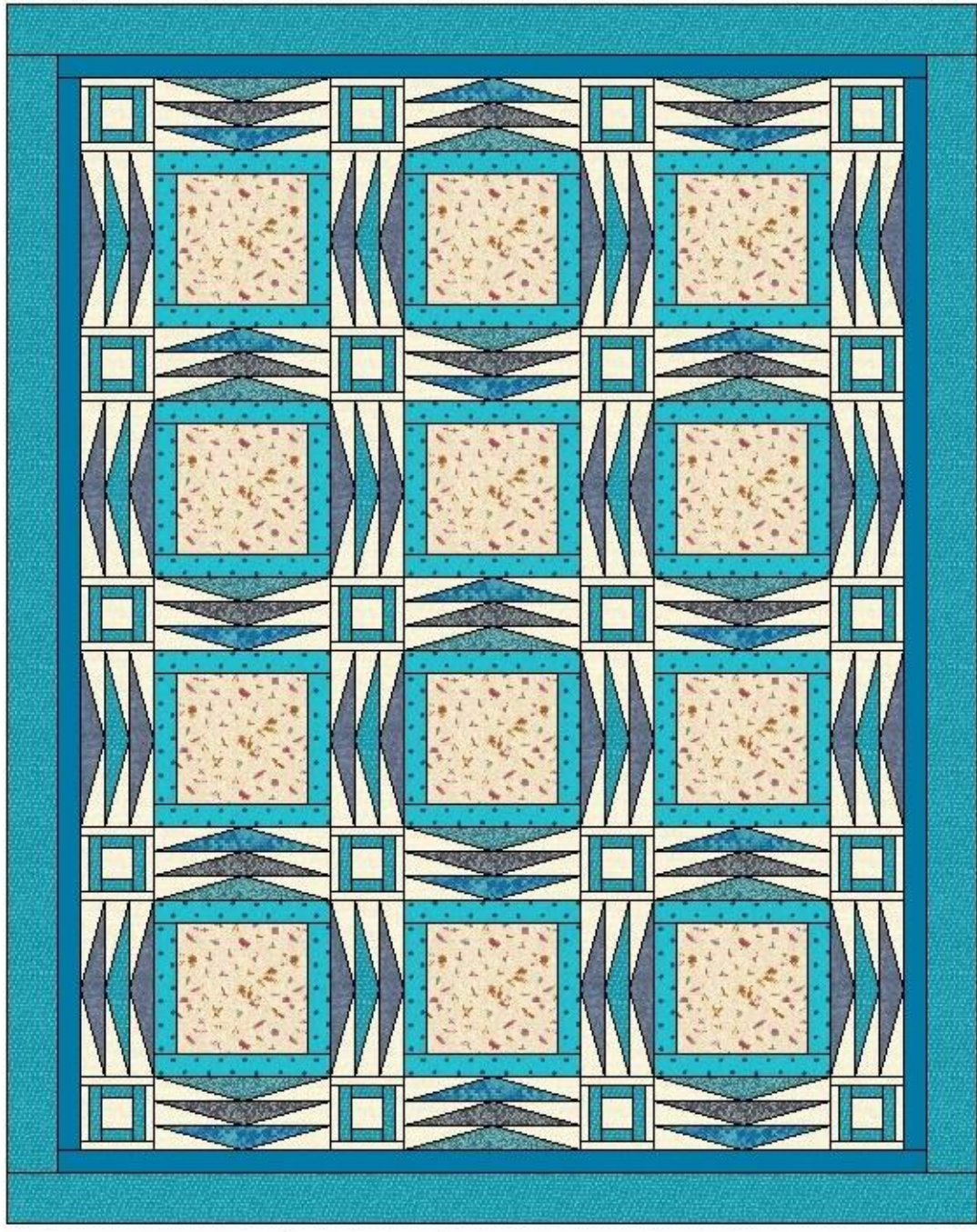
- 2 – 2" x 73½" – add to the sides of your center
- 2 – 2" x 59½" – add to the top and bottom

**From lighter turquoise:**

- 2 – 4" x 76½" – add to the sides of your center
- 2 – 4" x 66½" – add to the top and bottom

Layout now is this





4. **Sandwich**, using whatever type of batting and backing you prefer
5. **Quilt** as desired. I did loops all over.
6. **Bind**, using whatever method you wish.

Congratulations! Your quilt is finished!

Enjoy!





Templates A and B are for the off white/sand colored fabrics.

Template B needs to be cut and taped together to make one for the turquoise main triangle.

The faint lines are the cutting lines ( $\frac{1}{4}$ " beyond the sewing lines which are the dark lines).

Make sure to include  $\frac{1}{4}$ " seam allowance when making your templates.

This should measure  $7\frac{7}{8}$ " from point to end

C

A

B

Tape the two pieces together

After the two pieces are taped together,  
it should be 12" from tip of point to tip of point