

Bars and Stripes

About 92"x110"

To make the quilt pictured:



You need:

- 2 ¼ yards black
- 5 7/8 yards white
- 2 yards lighter green
- 2 3/8 yards a little darker greens
- ¼ yard a single lighter green for the cornerstones
- 3/4 yard of your choice of fabric for binding

Note: this quilt is made up of one 10" finished in the quilt block which looks like this:



Cut:

For the main block:

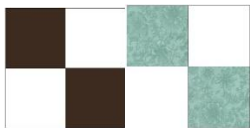
- From black –
50 – 1 ½" x 10 ½" strips
- From white –
100 – 1 ½" x 10 ½" strips
- From lighter greens –
100 – 2" x 10 ½" strips
- From darker greens –
100 – 2 ½" x 10 ½" strips

For the sashings:

- From white:
120 – 3 ½" x 10 ½"

For the cornerstones:

Will end up needing 32 4 patches using black/white and 30 4 patches using light green/white



Cut: *Note if you choose to strip piece, please do not cut these individual squares.*

- From white:
124 – 2" squares
- From black:
64 – 2" squares
- From light green:
60 – 2" squares

You could also get the same thing by strip piecing and get pieced units like this:

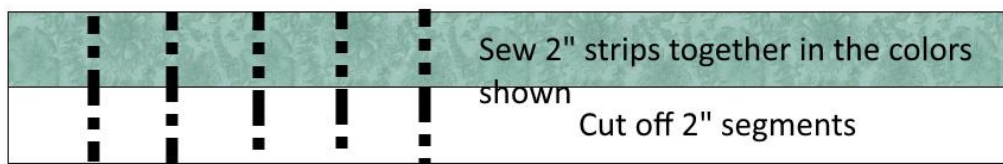


To strip piece these units:

Cut strips of fabric 2" x WOF or as long as you can in black and white

And light green and white.

Sew them together and cut off 2" segments.



If you do it this way, cut off 60 segments of green/white



If you do it this way, cut off 64 segments of black/white

Side corner setting triangles:

- From black:

Cut 5 - 15 1/2" squares and cut 2x diagonally like this. You need 18 finished triangles but will have 20.



Corner setting triangles:

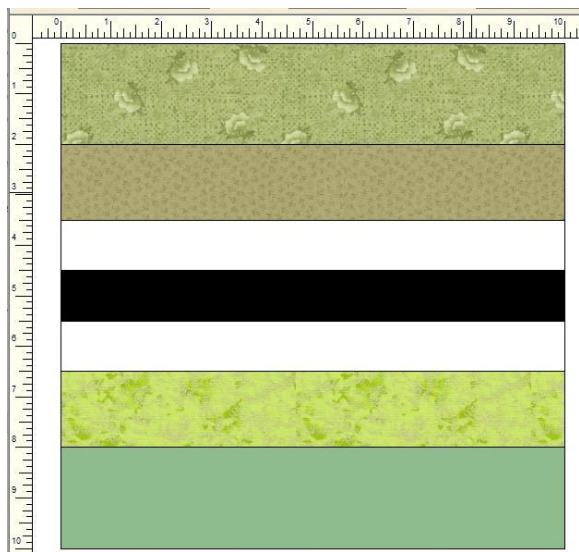
- From black:

Cut 2 8" squares and cut across once diagonally like this: This makes 4. These are your four corners.



Construct blocks:

This is a simple rail fence block consisting of using your previously cut strips and together like this: Use 1/4" seam allowance. Put the darker 2.5" green pieces on the outer part of the block, and the lighter 2" green inside that. Otherwise, use this block as a sample. I will also show a photo at the end of the pattern showing what I did.



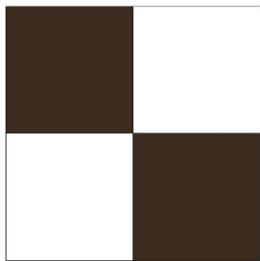
Make 50.

How to make the cornerstone 4 patches.

Using the squares or the constructed sets of squares, make the 4 patches, simply matching the colors as shown:



=

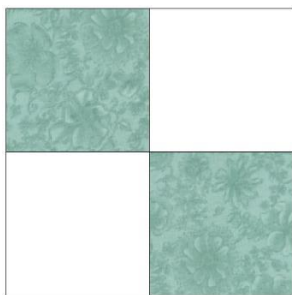


Make 32.

Using the light green do the same:



=

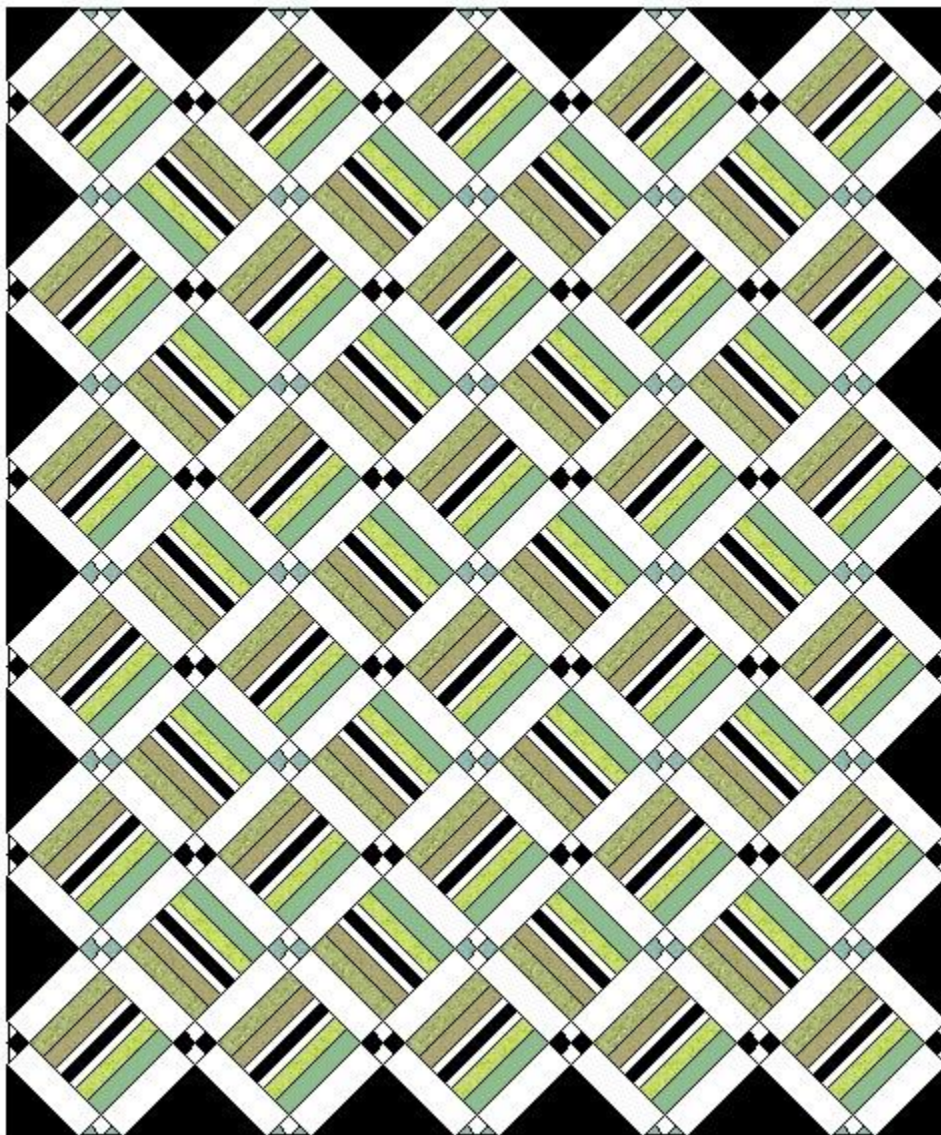


Make 30

How to put together this quilt:

1. Sew together in rows.

This quilt top is put together on point. I will show photos at the end of the quilt.



When making a quilt on point, the rows are diagonal as shown like this: Each row of sashing and cornerstones will count as a row. Just follow the diagram and my photos at the end of the pattern.



Once you finish putting the top together, if you need to trim up the edges of the quilt, do that using your ruler.

3. **Press well.**
4. **Sandwich**, using whatever type of batting and backing you prefer.
5. **Quilt** as desired. I used curls and swirls in thread that matched the background fabric..
6. **Bind**, using whatever method you wish.

Congratulations! Your quilt is finished! Enjoy!

© 2021 Becky Tillman Petersen, Quilted Twins

My blocks:



Photos from when I put together my top:







Quilting:

